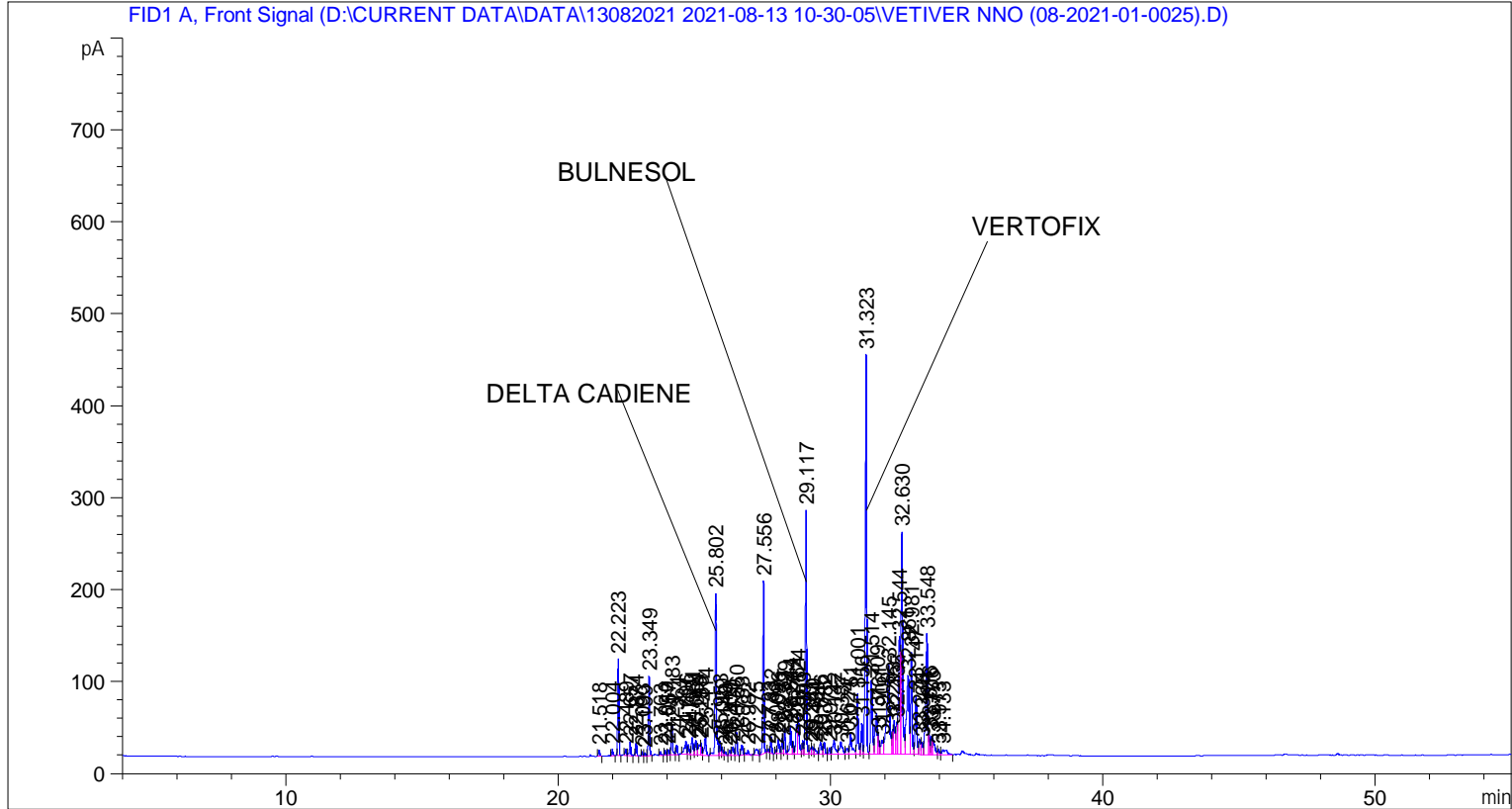


```

=====
Acq. Operator   : SYSTEM                      Seq. Line :    3
Acq. Instrument : BMV_NEW_GC_7820            Location  : Vial 103
Injection Date  : 13-Aug-21 1:04:04 PM       Inj       :    1
                                           Inj Volume: 0.5 µl

Acq. Method    : D:\CURRENT DATA\DATA\13082021 2021-08-13 10-30-05\UNIVERSAL BMV.M
Last changed   : 13-Aug-21 10:30:15 AM by SYSTEM
Analysis Method: C:\CHEM32\2\METHODS\COOLING.M
Last changed   : 13-Apr-22 4:07:56 PM by SYSTEM
                (modified after loading)

Additional Info : Peak(s) manually integrated
  
```



=====
 Area Percent Report
 =====

```

Sorted By      :      Signal
Multiplier     :      1.0000
Dilution       :      1.0000
Do not use Multiplier & Dilution Factor with ISTDs
  
```

Signal 1: FID1 A, Front Signal

| Peak # | RetTime [min] | Type | Width [min] | Area [pA*s] | Height [pA] | Area % |
|--------|---------------|------|-------------|-------------|-------------|---------|
| 1 | 21.518 | BB | 0.0500 | 19.88925 | 6.27318 | 0.15294 |
| 2 | 22.004 | BB | 0.0489 | 23.28518 | 7.35821 | 0.17906 |
| 3 | 22.223 | BB | 0.0484 | 318.98233 | 105.17997 | 2.45290 |
| 4 | 22.489 | BV | 0.0464 | 20.26445 | 7.08069 | 0.15583 |
| 5 | 22.657 | VB | 0.0537 | 54.48802 | 15.25208 | 0.41900 |
| 6 | 22.874 | BB | 0.0467 | 41.32522 | 13.90922 | 0.31778 |
| 7 | 23.093 | BV | 0.0456 | 14.12558 | 4.90447 | 0.10862 |

| Peak # | RetTime [min] | Type | Width [min] | Area [pA*s] | Height [pA] | Area % |
|--------|---------------|------|-------------|-------------|-------------|----------|
| 8 | 23.199 | VV | 0.0475 | 10.53532 | 3.46494 | 0.08101 |
| 9 | 23.349 | VB | 0.0471 | 266.18851 | 86.13474 | 2.04692 |
| 10 | 23.763 | BB | 0.0489 | 13.58990 | 4.18566 | 0.10450 |
| 11 | 23.940 | BV | 0.0460 | 17.14627 | 5.72020 | 0.13185 |
| 12 | 24.057 | VV | 0.0548 | 21.36233 | 5.82390 | 0.16427 |
| 13 | 24.183 | VV | 0.0534 | 117.89520 | 34.03012 | 0.90659 |
| 14 | 24.364 | VB | 0.0508 | 34.52340 | 10.66108 | 0.26548 |
| 15 | 24.696 | BV | 0.0695 | 69.70172 | 13.91125 | 0.53599 |
| 16 | 24.791 | VV | 0.0555 | 40.13946 | 10.52034 | 0.30866 |
| 17 | 24.931 | VV | 0.0619 | 79.31954 | 18.53369 | 0.60995 |
| 18 | 25.064 | VV | 0.0584 | 64.50938 | 16.20616 | 0.49606 |
| 19 | 25.193 | VV | 0.0741 | 57.67192 | 11.39134 | 0.44348 |
| 20 | 25.259 | VV | 0.0514 | 41.85987 | 12.40108 | 0.32189 |
| 21 | 25.414 | VB | 0.0656 | 97.50247 | 21.61402 | 0.74977 |
| 22 | 25.802 | BV | 0.0523 | 623.35193 | 176.21230 | 4.79342 |
| 23 | 25.953 | VV | 0.0479 | 48.00644 | 15.60696 | 0.36916 |
| 24 | 26.029 | VB | 0.0526 | 35.39736 | 9.68403 | 0.27220 |
| 25 | 26.149 | BV | 0.0677 | 20.90789 | 4.46149 | 0.16078 |
| 26 | 26.309 | VV | 0.0542 | 19.40072 | 5.49486 | 0.14919 |
| 27 | 26.430 | VV | 0.0666 | 43.01931 | 9.18792 | 0.33081 |
| 28 | 26.560 | VB | 0.0512 | 81.95990 | 25.02478 | 0.63025 |
| 29 | 26.753 | BV | 0.0687 | 47.88421 | 11.46917 | 0.36822 |
| 30 | 26.982 | VB | 0.0716 | 25.91642 | 5.07056 | 0.19929 |
| 31 | 27.275 | BV | 0.0897 | 44.11723 | 6.37866 | 0.33925 |
| 32 | 27.556 | VB | 0.0490 | 594.40839 | 187.33029 | 4.57085 |
| 33 | 27.733 | BV | 0.0460 | 10.65303 | 3.88402 | 0.08192 |
| 34 | 27.832 | VB | 0.0469 | 53.85030 | 17.99855 | 0.41410 |
| 35 | 28.002 | BV | 0.0427 | 12.56148 | 4.48223 | 0.09659 |
| 36 | 28.096 | VV | 0.0606 | 63.90911 | 15.66276 | 0.49145 |
| 37 | 28.233 | VV | 0.0487 | 50.56155 | 16.54350 | 0.38881 |
| 38 | 28.329 | VB | 0.0537 | 95.48563 | 27.36712 | 0.73426 |
| 39 | 28.544 | BV | 0.0571 | 119.29304 | 30.86539 | 0.91733 |
| 40 | 28.627 | VV | 0.0468 | 42.29052 | 13.76372 | 0.32520 |
| 41 | 28.764 | VV | 0.0501 | 106.97801 | 31.94151 | 0.82263 |
| 42 | 28.824 | VB | 0.0624 | 177.02336 | 40.14803 | 1.36127 |
| 43 | 28.993 | BV | 0.0491 | 48.84626 | 14.96729 | 0.37562 |
| 44 | 29.117 | VB | 0.0515 | 874.29163 | 264.74518 | 6.72309 |
| 45 | 29.281 | BV | 0.0527 | 27.14378 | 7.24598 | 0.20873 |
| 46 | 29.340 | VV | 0.0538 | 32.29836 | 8.60261 | 0.24837 |
| 47 | 29.434 | VV | 0.0781 | 36.38079 | 6.14185 | 0.27976 |
| 48 | 29.646 | VV | 0.0692 | 60.46274 | 13.01395 | 0.46494 |
| 49 | 29.782 | VV | 0.0674 | 63.55546 | 13.15192 | 0.48873 |
| 50 | 29.972 | VV | 0.0572 | 26.63891 | 7.03207 | 0.20485 |
| 51 | 30.142 | VV | 0.0893 | 102.77859 | 15.30698 | 0.79034 |
| 52 | 30.387 | VV | 0.0948 | 100.69705 | 13.85874 | 0.77434 |
| 53 | 30.624 | VV | 0.0700 | 36.40291 | 6.33795 | 0.27993 |
| 54 | 30.751 | VV | 0.0749 | 125.63835 | 22.93841 | 0.96613 |
| 55 | 31.001 | VV | 0.0548 | 240.31897 | 65.50868 | 1.84799 |
| 56 | 31.156 | VV | 0.0524 | 116.59455 | 33.63560 | 0.89658 |
| 57 | 31.323 | VB | 0.0570 | 1562.52454 | 433.70172 | 12.01543 |
| 58 | 31.514 | BV | 0.0622 | 347.50558 | 80.75224 | 2.67223 |
| 59 | 31.709 | VV | 0.0796 | 265.30383 | 45.08688 | 2.04012 |
| 60 | 31.761 | VV | 0.0480 | 75.87926 | 23.31974 | 0.58349 |
| 61 | 31.906 | VV | 0.0781 | 84.84863 | 15.20633 | 0.65247 |

| Peak # | RetTime [min] | Type | Width [min] | Area [pA*s] | Height [pA] | Area % |
|--------|---------------|------|-------------|-------------|-------------|---------|
| 62 | 32.145 | VV | 0.0942 | 764.66394 | 97.81490 | 5.88008 |
| 63 | 32.293 | VV | 0.0495 | 90.09647 | 27.28959 | 0.69282 |
| 64 | 32.352 | VV | 0.0551 | 143.24715 | 37.09013 | 1.10154 |
| 65 | 32.435 | VV | 0.0489 | 118.39087 | 34.62899 | 0.91040 |
| 66 | 32.544 | VV | 0.0695 | 600.21039 | 128.40742 | 4.61547 |
| 67 | 32.630 | VV | 0.0585 | 1004.37640 | 241.76288 | 7.72341 |
| 68 | 32.861 | VV | 0.0949 | 601.53284 | 85.66106 | 4.62564 |
| 69 | 32.981 | VV | 0.0565 | 404.14511 | 110.93981 | 3.10778 |
| 70 | 33.147 | VV | 0.0638 | 259.50439 | 63.39206 | 1.99553 |
| 71 | 33.274 | VV | 0.0669 | 78.07364 | 16.59336 | 0.60037 |
| 72 | 33.365 | VV | 0.0643 | 58.73838 | 13.36004 | 0.45168 |
| 73 | 33.548 | VV | 0.0644 | 569.15887 | 131.75423 | 4.37669 |
| 74 | 33.616 | VV | 0.0455 | 72.80274 | 23.29758 | 0.55984 |
| 75 | 33.706 | VV | 0.0544 | 76.19969 | 20.00809 | 0.58596 |
| 76 | 33.773 | VV | 0.0767 | 103.90948 | 17.89432 | 0.79904 |
| 77 | 33.973 | VV | 0.0659 | 27.32688 | 6.14076 | 0.21014 |
| 78 | 34.133 | VB | 0.1556 | 62.54711 | 5.04632 | 0.48097 |

Totals : 1.30043e4 3224.76988

=====
*** End of Report ***