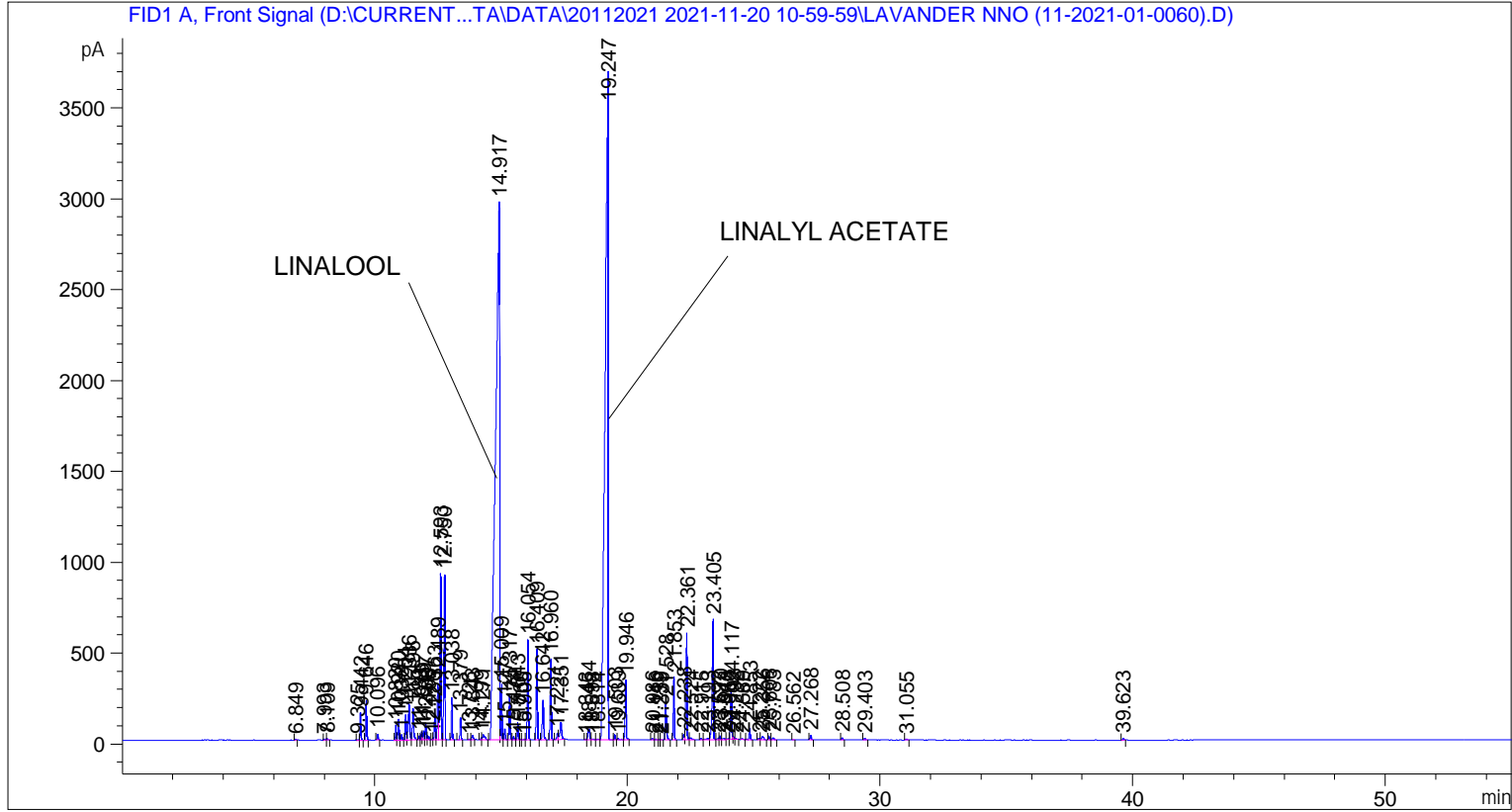


```

=====
Acq. Operator   : SYSTEM                               Seq. Line :    4
Acq. Instrument : BMV_NEW_GC_7820                     Location  : Vial 104
Injection Date  : 20-Nov-21 2:30:19 PM                Inj       :    1
                                                    Inj Volume: 0.5 µl

Acq. Method     : D:\CURRENT DATA\DATA\20112021 2021-11-20 10-59-59\UNIVERSAL BMV.M
Last changed    : 20-Nov-21 11:00:09 AM by SYSTEM
Analysis Method : C:\CHEM32\2\METHODS\COOLING.M
Last changed    : 05-Nov-20 11:10:00 AM by SYSTEM
Additional Info : Peak(s) manually integrated
  
```



=====
 Area Percent Report
 =====

```

Sorted By      :      Signal
Multiplier     :      1.0000
Dilution       :      1.0000
Do not use Multiplier & Dilution Factor with ISTDs
  
```

Signal 1: FID1 A, Front Signal

Peak #	RetTime [min]	Type	Width [min]	Area [pA*s]	Height [pA]	Area %
1	6.849	BB	0.0409	18.46345	6.53820	0.01874
2	7.993	BB	0.0500	21.13360	5.86790	0.02145
3	8.109	BB	0.0427	24.15997	8.35381	0.02452
4	9.325	BV	0.0403	8.73723	3.48298	0.00887
5	9.442	VB	0.0403	394.60764	152.02650	0.40051
6	9.646	BB	0.0406	575.70050	219.21251	0.58431
7	10.096	BB	0.0459	91.08283	31.38234	0.09245
8	10.820	BV	0.0417	219.20464	83.22537	0.22248

Peak #	RetTime [min]	Type	Width [min]	Area [pA*s]	Height [pA]	Area %
9	10.920	VV	0.0428	324.13052	115.39393	0.32898
10	11.038	VB	0.0446	91.87709	31.02041	0.09325
11	11.204	BV	0.0415	380.28418	140.78177	0.38597
12	11.336	VV	0.0555	784.75098	205.93387	0.79649
13	11.496	VB	0.0532	610.38245	172.70169	0.61951
14	11.739	BV	0.0457	66.57578	22.36465	0.06757
15	11.835	VV	0.0441	133.93320	47.22235	0.13594
16	11.919	VV	0.0439	149.80922	51.53894	0.15205
17	12.007	VV	0.0462	271.38025	90.07012	0.27544
18	12.108	VB	0.0452	66.46130	22.03436	0.06746
19	12.286	BV	0.0397	18.56240	7.05184	0.01884
20	12.363	VV	0.0492	456.91922	147.05469	0.46375
21	12.489	VV	0.0559	1071.08130	305.71109	1.08710
22	12.593	VV	0.0468	2729.59644	916.09943	2.77043
23	12.750	VB	0.0454	2685.54492	909.65320	2.72572
24	13.038	BB	0.0421	621.53711	233.30585	0.63083
25	13.379	BB	0.0425	341.01776	122.56972	0.34612
26	13.726	BV	0.0453	19.34402	6.22425	0.01963
27	13.843	VB	0.0546	90.90063	24.91671	0.09226
28	14.199	BV	0.0429	28.48028	10.42076	0.02891
29	14.271	VB	0.0791	176.52252	29.38688	0.17916
30	14.917	BV	0.1407	3.31519e4	2959.45776	33.64776
31	15.009	VV	0.0396	754.53564	307.72623	0.76582
32	15.127	VB	0.0502	202.83339	61.94817	0.20587
33	15.317	BV	0.0434	677.50311	243.86269	0.68764
34	15.474	VV	0.0469	58.31935	18.95195	0.05919
35	15.643	VV	0.0433	273.48468	98.67074	0.27758
36	15.766	VV	0.0413	8.64197	3.21720	0.00877
37	15.905	VV	0.0513	15.93675	4.84971	0.01618
38	16.054	VB	0.0490	1695.56189	550.18268	1.72092
39	16.409	BB	0.0503	1557.49854	499.98514	1.58080
40	16.642	BB	0.0598	846.45386	220.33348	0.85912
41	16.960	BB	0.0491	1378.47046	445.68393	1.39909
42	17.221	BV	0.0510	129.94968	38.88960	0.13189
43	17.351	VB	0.0748	470.85037	95.04198	0.47789
44	18.343	BV	0.0470	11.54354	3.74606	0.01172
45	18.454	VV	0.0703	281.48544	61.58985	0.28570
46	18.598	VB	0.0814	32.35477	5.43711	0.03284
47	18.814	BV	0.0802	28.26552	5.05540	0.02869
48	19.247	VV	0.1170	3.50697e4	3685.68066	35.59425
49	19.503	VB	0.0431	86.56567	30.55059	0.08786
50	19.639	BV	0.0757	39.61325	7.03260	0.04021
51	19.946	VB	0.0462	962.78278	328.19455	0.97718
52	20.986	BB	0.0510	28.03971	8.39018	0.02846
53	21.116	BB	0.0543	12.65731	3.66504	0.01285
54	21.259	BV	0.0445	10.60828	3.48867	0.01077
55	21.339	VB	0.0502	8.22040	2.44748	0.00834
56	21.528	BB	0.0527	735.24072	210.97278	0.74624
57	21.853	BB	0.0469	1034.22168	346.01816	1.04969
58	22.238	BV	0.0463	88.97115	30.23844	0.09030
59	22.361	VV	0.0511	2025.07593	589.03125	2.05537
60	22.524	VB	0.0822	71.53726	11.72641	0.07261
61	22.915	BB	0.0513	23.91387	6.91453	0.02427
62	23.193	BV	0.1005	45.04281	6.14568	0.04572

Peak #	RetTime [min]	Type	Width [min]	Area [pA*s]	Height [pA]	Area %
63	23.405	VB	0.0552	2448.28223	661.13446	2.48490
64	23.592	BV	0.0627	19.29704	4.62607	0.01959
65	23.670	VV	0.0525	63.73617	19.31431	0.06469
66	23.843	VV	0.0817	42.03759	6.93517	0.04267
67	23.980	VV	0.0748	22.37732	4.16032	0.02271
68	24.117	VV	0.0473	851.05048	281.45990	0.86378
69	24.193	VV	0.0459	47.27918	14.94923	0.04799
70	24.292	VB	0.0535	16.69160	4.37637	0.01694
71	24.560	BB	0.0562	16.80893	4.34277	0.01706
72	24.853	BB	0.0523	217.34586	62.92855	0.22060
73	25.222	BV	0.0566	28.93453	7.56533	0.02937
74	25.356	VB	0.0809	112.24509	19.00702	0.11392
75	25.606	BB	0.0451	64.28133	21.96315	0.06524
76	25.783	BB	0.0723	59.10392	12.69232	0.05999
77	26.562	BB	0.0428	5.35750	2.02898	0.00544
78	27.268	BB	0.0543	95.86643	27.07182	0.09730
79	28.508	BB	0.0498	35.70057	11.00668	0.03623
80	29.403	BB	0.0584	34.07143	8.56693	0.03458
81	31.055	BB	0.0591	24.67700	6.38259	0.02505
82	39.623	BB	0.0620	31.18144	7.74301	0.03165

Totals : 9.85262e4 1.62049e4

=====
*** End of Report ***