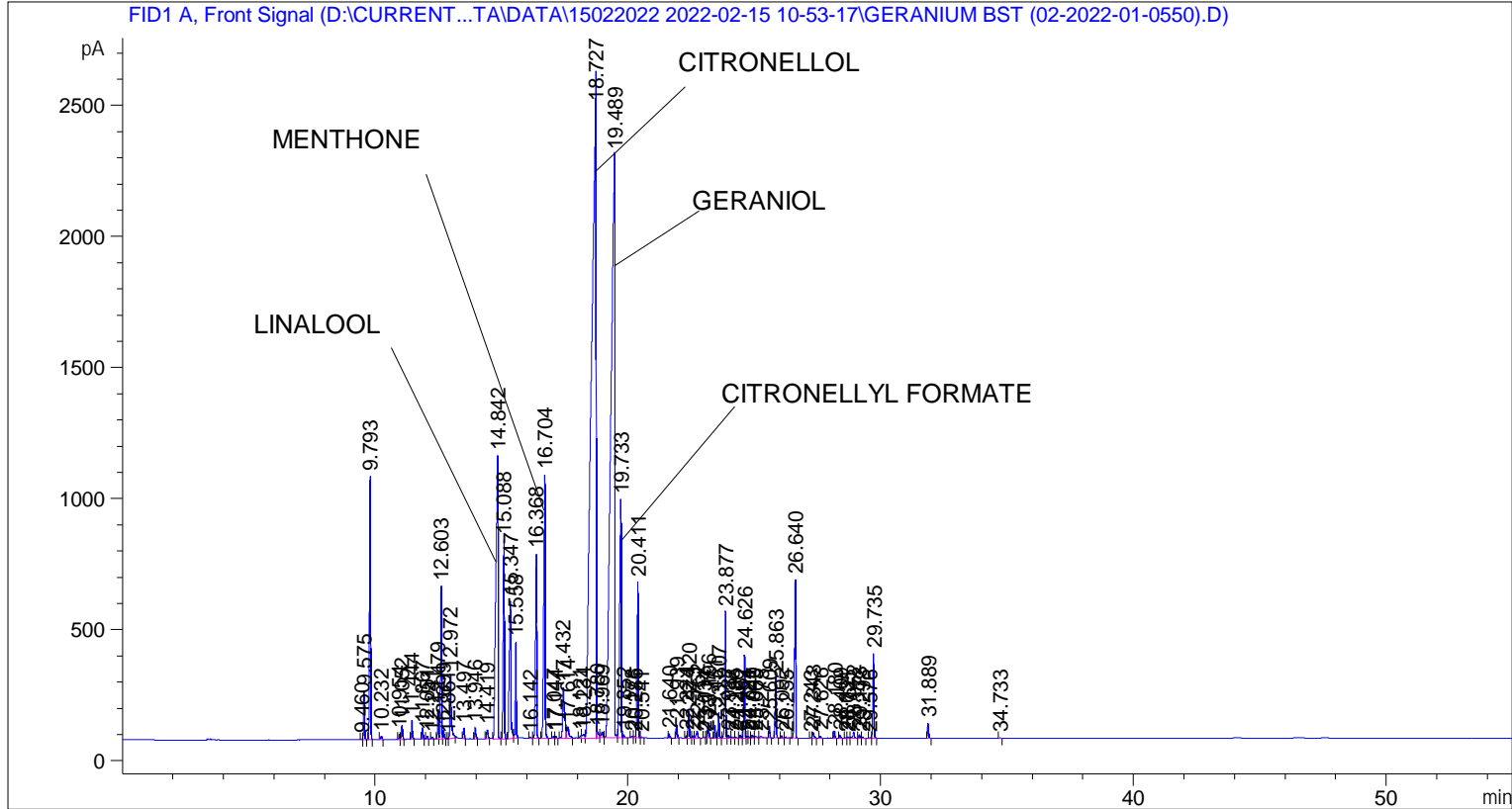


```

=====
Acq. Operator   : SYSTEM                               Seq. Line :    4
Acq. Instrument : BMV_NEW_GC_7820                     Location  : Vial 104
Injection Date  : 15-Feb-22 2:21:20 PM                 Inj       :    1
                                                    Inj Volume: 0.5 µl

Acq. Method     : D:\CURRENT DATA\DATA\15022022 2022-02-15 10-53-17\UNIVERSAL BMV.M
Last changed    : 15-Feb-22 10:53:27 AM by SYSTEM
Analysis Method : C:\CHEM32\2\METHODS\COOLING.M
Last changed    : 03-Mar-22 2:15:55 PM by SYSTEM
                (modified after loading)

Additional Info : Peak(s) manually integrated
  
```



Area Percent Report

```

Sorted By      :      Signal
Multiplier     :      1.0000
Dilution       :      1.0000
Do not use Multiplier & Dilution Factor with ISTDs
  
```

Signal 1: FID1 A, Front Signal

Peak #	RetTime [min]	Type	Width [min]	Area [pA*s]	Height [pA]	Area %
1	9.460	BV	0.0409	7.07814	2.67585	0.00724
2	9.575	VB	0.0458	537.67645	185.73370	0.54966
3	9.793	BB	0.0459	2909.89941	1001.99255	2.97476
4	10.232	BB	0.0510	42.04972	12.25784	0.04299
5	10.954	BV	0.0415	56.85480	21.06159	0.05812
6	11.052	VB	0.0453	156.47800	53.29349	0.15997
7	11.444	BB	0.0420	193.44240	70.48936	0.19775

Peak #	RetTime [min]	Type	Width [min]	Area [pA*s]	Height [pA]	Area %
8	11.867	BB	0.0462	120.80341	41.19104	0.12350
9	12.051	BB	0.0453	33.09059	11.57738	0.03383
10	12.241	BB	0.0412	22.63716	8.73658	0.02314
11	12.479	BV	0.0435	305.65298	109.79016	0.31247
12	12.603	VV	0.0451	1651.97510	582.74890	1.68880
13	12.699	VB	0.0456	92.37057	31.13397	0.09443
14	12.861	BV	0.0404	5.33334	2.11455	0.00545
15	12.972	VB	0.0631	983.21710	243.64412	1.00513
16	13.497	BB	0.0445	111.26358	39.90966	0.11374
17	13.946	BB	0.0488	139.52766	43.01392	0.14264
18	14.419	BB	0.0571	123.02841	33.31686	0.12577
19	14.842	BV	0.0786	6436.27832	1079.29846	6.57975
20	15.088	VB	0.0472	2486.71484	758.77490	2.54215
21	15.347	BV	0.0675	2403.49512	524.49866	2.45707
22	15.558	VB	0.0423	1013.14856	365.54529	1.03573
23	16.142	BB	0.0474	14.81644	4.87932	0.01515
24	16.368	BB	0.0552	2421.03467	702.80121	2.47500
25	16.704	BB	0.0549	3953.95557	1005.45459	4.04209
26	17.047	BV	0.0516	30.84999	9.33304	0.03154
27	17.144	VB	0.0484	24.61308	7.68465	0.02516
28	17.432	BV	0.0811	1108.27808	192.61771	1.13298
29	17.614	VB	0.0718	225.16516	43.18549	0.23018
30	18.121	BV	0.0656	46.57246	10.51989	0.04761
31	18.234	VV	0.0914	91.14429	13.74380	0.09318
32	18.727	VV	0.1505	3.19752e4	2546.61279	32.68796
33	18.780	VV	0.0683	115.54048	24.37762	0.11812
34	18.969	VV	0.0779	130.37086	23.43588	0.13328
35	19.489	VV	0.1278	2.33881e4	2221.60229	23.90940
36	19.733	VV	0.0594	3687.05957	907.53241	3.76925
37	19.852	VB	0.0433	32.00076	11.20459	0.03271
38	20.178	BV	0.0723	26.07850	5.39986	0.02666
39	20.286	VV	0.0548	21.77668	5.43063	0.02226
40	20.411	VB	0.0504	2004.48816	593.47333	2.04917
41	20.541	BB	0.0432	5.70450	2.13512	0.00583
42	21.640	BB	0.0466	49.50773	16.67648	0.05061
43	21.939	BB	0.0470	159.54001	53.13733	0.16310
44	22.324	BV	0.0463	24.09106	8.18651	0.02463
45	22.420	VV	0.0472	315.46060	104.53873	0.32249
46	22.573	VV	0.0465	28.98265	9.79944	0.02963
47	22.752	VB	0.0649	119.74718	26.42812	0.12242
48	23.034	BV	0.0473	7.53613	2.35945	0.00770
49	23.117	VV	0.0409	14.00211	5.28021	0.01431
50	23.196	VB	0.0473	182.11090	60.18769	0.18617
51	23.451	BV	0.0467	139.28607	46.81157	0.14239
52	23.607	VB	0.0468	293.93268	98.59415	0.30048
53	23.877	BV	0.0517	1560.09753	482.42383	1.59487
54	23.987	VV	0.0534	40.78101	11.23098	0.04169
55	24.138	VV	0.0674	29.00767	5.99547	0.02965
56	24.286	VV	0.0528	14.85614	4.14285	0.01519
57	24.462	VV	0.0510	40.19727	11.72204	0.04109
58	24.626	VV	0.0455	938.98529	317.42212	0.95992
59	24.724	VV	0.0435	17.28580	5.67752	0.01767
60	24.781	VV	0.0475	16.31054	5.21299	0.01667
61	24.940	VV	0.0526	38.59324	11.09304	0.03945

Peak #	RetTime [min]	Type	Width [min]	Area [pA*s]	Height [pA]	Area %
62	25.065	VV	0.0864	31.42248	4.99577	0.03212
63	25.275	VB	0.0639	23.46804	5.17351	0.02399
64	25.609	BB	0.0432	119.15363	43.15420	0.12181
65	25.863	BB	0.0472	697.45813	230.95171	0.71301
66	26.092	BB	0.0451	23.50899	8.27864	0.02403
67	26.255	BB	0.0546	8.76749	2.51662	0.00896
68	26.640	BB	0.0533	2091.47070	605.71130	2.13809
69	27.243	BV	0.0481	8.00499	2.65773	0.00818
70	27.343	VB	0.0593	87.31423	21.51831	0.08926
71	27.626	BB	0.0475	27.17254	8.91855	0.02778
72	28.180	BB	0.0493	91.77117	29.53011	0.09382
73	28.409	BB	0.0471	31.31001	10.41152	0.03201
74	28.631	BV	0.0444	6.70507	2.33928	0.00685
75	28.725	VV	0.0491	15.99046	4.76539	0.01635
76	28.952	VB	0.0647	104.85399	22.76364	0.10719
77	29.173	BV	0.0480	39.79456	13.26450	0.04068
78	29.298	VB	0.0444	10.83206	3.78861	0.01107
79	29.576	BV	0.0495	6.74681	2.10079	0.00690
80	29.735	VB	0.0479	1023.06415	323.52383	1.04587
81	31.889	BB	0.0499	198.46806	59.57621	0.20289
82	34.733	BB	0.0498	7.18450	2.10483	0.00734

Totals : 9.78195e4 1.62492e4

=====
*** End of Report ***