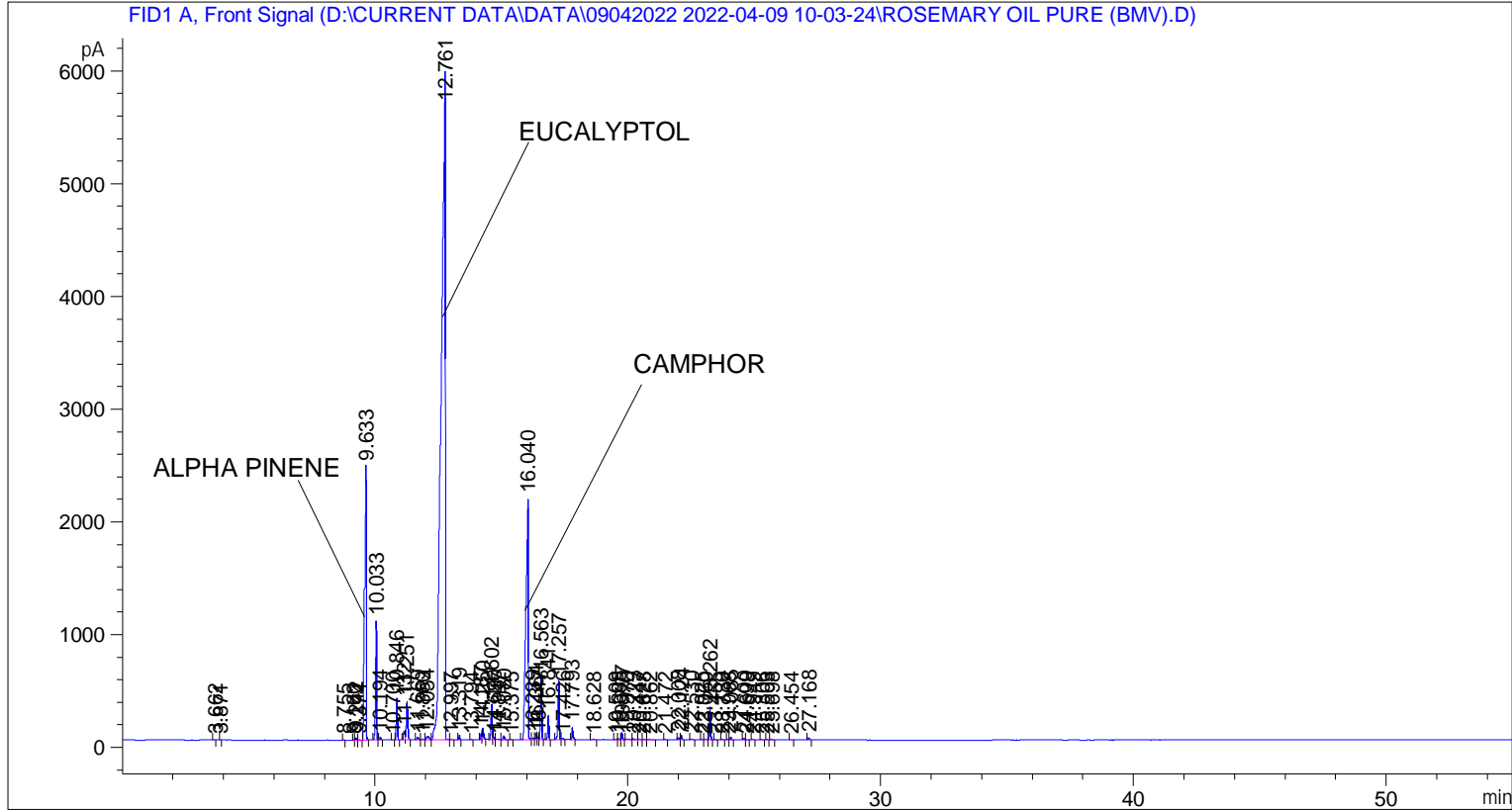


```

=====
Acq. Operator   : SYSTEM                               Seq. Line :    1
Acq. Instrument : BMV_NEW_GC_7820                     Location  : Vial 101
Injection Date  : 09-Apr-22 10:14:48 AM                Inj       :    1
                                                    Inj Volume: 0.5 µl

Acq. Method     : D:\CURRENT DATA\DATA\09042022 2022-04-09 10-03-24\UNIVERSAL BMV.M
Last changed    : 09-Apr-22 10:03:36 AM by SYSTEM
Analysis Method : C:\CHEM32\2\METHODS\COOLING.M
Last changed    : 19-Apr-22 1:27:26 PM by SYSTEM
                (modified after loading)
  
```



=====  
 Area Percent Report  
 =====

```

Sorted By      :      Signal
Multiplier     :      1.0000
Dilution      :      1.0000
Do not use Multiplier & Dilution Factor with ISTDs
  
```

Signal 1: FID1 A, Front Signal

| Peak # | RetTime [min] | Type | Width [min] | Area [pA*s] | Height [pA] | Area %  |
|--------|---------------|------|-------------|-------------|-------------|---------|
| 1      | 3.662         | BB   | 0.0230      | 4.80646     | 3.12072     | 0.00464 |
| 2      | 3.871         | BB   | 0.0235      | 4.45844     | 2.97547     | 0.00431 |
| 3      | 8.755         | BB   | 0.0407      | 4.81045     | 1.77041     | 0.00465 |
| 4      | 9.160         | BV   | 0.0374      | 5.30282     | 2.17949     | 0.00512 |
| 5      | 9.242         | VB   | 0.0449      | 64.90233    | 22.32649    | 0.06268 |
| 6      | 9.374         | BB   | 0.0583      | 8.99506     | 2.48036     | 0.00869 |
| 7      | 9.633         | BB   | 0.0530      | 9381.83984  | 2430.64453  | 9.06064 |
| 8      | 10.033        | BB   | 0.0439      | 3071.50098  | 1055.69470  | 2.96634 |

| Peak # | RetTime [min] | Type | Width [min] | Area [pA*s] | Height [pA] | Area %   |
|--------|---------------|------|-------------|-------------|-------------|----------|
| 9      | 10.194        | BB   | 0.0451      | 72.44614    | 24.76598    | 0.06997  |
| 10     | 10.700        | BB   | 0.0412      | 11.13210    | 4.29876     | 0.01075  |
| 11     | 10.846        | BB   | 0.0467      | 1109.79407  | 373.02499   | 1.07180  |
| 12     | 11.132        | BV   | 0.0546      | 307.39246   | 80.44138    | 0.29687  |
| 13     | 11.251        | VB   | 0.0578      | 1285.11096  | 342.54599   | 1.24111  |
| 14     | 11.669        | BB   | 0.0712      | 109.62237   | 24.48511    | 0.10587  |
| 15     | 11.860        | BV   | 0.0703      | 33.60542    | 7.64314     | 0.03245  |
| 16     | 12.054        | VV   | 0.0938      | 208.95935   | 30.54739    | 0.20181  |
| 17     | 12.761        | VV   | 0.1340      | 6.53581e4   | 5912.91309  | 63.12053 |
| 18     | 12.997        | VB   | 0.0559      | 27.50100    | 6.98704     | 0.02656  |
| 19     | 13.319        | BB   | 0.0409      | 110.41996   | 41.62393    | 0.10664  |
| 20     | 13.794        | BB   | 0.0462      | 14.64057    | 4.84874     | 0.01414  |
| 21     | 14.187        | BV   | 0.0379      | 143.32314   | 57.80017    | 0.13842  |
| 22     | 14.250        | VB   | 0.0506      | 343.67780   | 101.31046   | 0.33191  |
| 23     | 14.602        | BV   | 0.0533      | 1051.71704  | 312.09155   | 1.01571  |
| 24     | 14.690        | VV   | 0.0462      | 66.68616    | 21.51672    | 0.06440  |
| 25     | 14.847        | VV   | 0.0867      | 24.91881    | 3.99886     | 0.02407  |
| 26     | 15.080        | VB   | 0.0543      | 119.00463   | 33.61973    | 0.11493  |
| 27     | 15.375        | BB   | 0.0526      | 13.77096    | 3.86059     | 0.01330  |
| 28     | 16.040        | BV   | 0.0806      | 1.38529e4   | 2138.04199  | 13.37867 |
| 29     | 16.239        | VV   | 0.0539      | 53.06278    | 13.80006    | 0.05125  |
| 30     | 16.364        | VV   | 0.0435      | 172.44833   | 61.95202    | 0.16654  |
| 31     | 16.447        | VV   | 0.0428      | 40.72708    | 14.93069    | 0.03933  |
| 32     | 16.563        | VB   | 0.0472      | 1790.46814  | 561.54138   | 1.72917  |
| 33     | 16.841        | BB   | 0.0448      | 626.14978   | 215.98256   | 0.60471  |
| 34     | 17.257        | BB   | 0.0500      | 1777.31421  | 518.73016   | 1.71647  |
| 35     | 17.426        | BB   | 0.0575      | 44.57394    | 11.69362    | 0.04305  |
| 36     | 17.793        | BB   | 0.0475      | 336.35748   | 110.43169   | 0.32484  |
| 37     | 18.628        | BB   | 0.0739      | 18.41310    | 3.52965     | 0.01778  |
| 38     | 19.509        | BV   | 0.0555      | 13.09194    | 3.59370     | 0.01264  |
| 39     | 19.635        | VV   | 0.0478      | 25.91506    | 8.43822     | 0.02503  |
| 40     | 19.777        | VB   | 0.0449      | 191.60451   | 65.94321    | 0.18504  |
| 41     | 19.970        | BB   | 0.1141      | 40.84473    | 4.57577     | 0.03945  |
| 42     | 20.223        | BB   | 0.0682      | 37.74782    | 7.83512     | 0.03646  |
| 43     | 20.447        | BV   | 0.0643      | 22.78949    | 4.72271     | 0.02201  |
| 44     | 20.628        | VV   | 0.0480      | 13.96644    | 4.28493     | 0.01349  |
| 45     | 20.862        | VB   | 0.0803      | 24.70619    | 4.21830     | 0.02386  |
| 46     | 21.472        | BB   | 0.0558      | 13.92630    | 3.79708     | 0.01345  |
| 47     | 22.008        | BV   | 0.0512      | 62.82219    | 19.20592    | 0.06067  |
| 48     | 22.124        | VB   | 0.0488      | 111.08370   | 36.22476    | 0.10728  |
| 49     | 22.530        | BB   | 0.0712      | 40.03483    | 8.02574     | 0.03866  |
| 50     | 22.925        | BV   | 0.0512      | 18.01603    | 5.35792     | 0.01740  |
| 51     | 23.060        | VV   | 0.0694      | 25.56160    | 5.19820     | 0.02469  |
| 52     | 23.262        | VB   | 0.0453      | 893.16052   | 294.84229   | 0.86258  |
| 53     | 23.455        | BB   | 0.0496      | 16.71062    | 5.18564     | 0.01614  |
| 54     | 23.730        | BB   | 0.0538      | 19.15098    | 5.34397     | 0.01850  |
| 55     | 23.968        | BV   | 0.0508      | 23.84435    | 7.35291     | 0.02303  |
| 56     | 24.085        | VB   | 0.0510      | 76.68882    | 22.92805    | 0.07406  |
| 57     | 24.600        | BV   | 0.0475      | 32.71840    | 10.75737    | 0.03160  |
| 58     | 24.699        | VB   | 0.0519      | 11.08867    | 3.32573     | 0.01071  |
| 59     | 24.949        | BB   | 0.0489      | 11.47991    | 3.62761     | 0.01109  |
| 60     | 25.306        | BB   | 0.0505      | 15.98675    | 4.84432     | 0.01544  |
| 61     | 25.503        | BB   | 0.0519      | 16.61879    | 4.86449     | 0.01605  |
| 62     | 25.698        | BB   | 0.0584      | 33.32338    | 8.95121     | 0.03218  |

| Peak # | RetTime [min] | Type | Width [min] | Area [pA*s] | Height [pA] | Area %  |
|--------|---------------|------|-------------|-------------|-------------|---------|
| 63     | 26.454        | BB   | 0.0471      | 11.10686    | 3.69433     | 0.01073 |
| 64     | 27.168        | BB   | 0.0591      | 70.06384    | 17.37105    | 0.06767 |

Totals : 1.03545e5 1.51347e4

=====  
\*\*\* End of Report \*\*\*