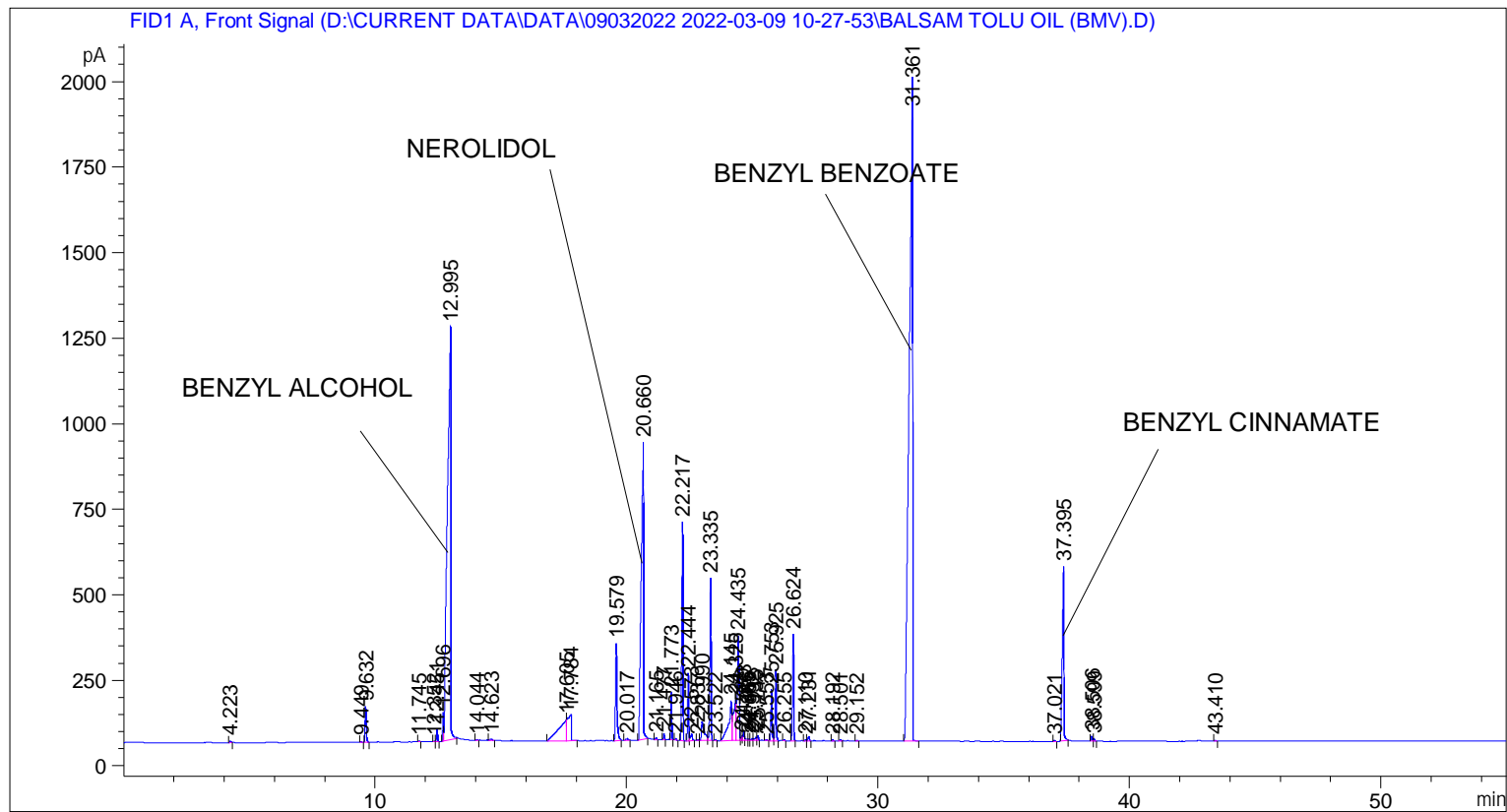


```

=====
Acq. Operator   : SYSTEM                               Seq. Line :    3
Acq. Instrument : BMV_NEW_GC_7820                     Location  : Vial 103
Injection Date  : 09-Mar-22 12:51:08 PM              Inj       :    1
                                                    Inj Volume: 0.5 µl

Acq. Method     : D:\CURRENT DATA\DATA\09032022 2022-03-09 10-27-53\UNIVERSAL BMV.M
Last changed    : 09-Mar-22 10:28:03 AM by SYSTEM
Analysis Method : C:\CHEM32\2\DATA\01032016 2016-03-01 08-36-52\UNIVERSAL.M (Sequence Method)
Last changed    : 01-Mar-16 8:36:54 AM by SYSTEM
  
```



Area Percent Report

```

Sorted By      : Signal
Multiplier     : 1.0000
Dilution       : 1.0000
Do not use Multiplier & Dilution Factor with ISTDs
  
```

Signal 1: FID1 A, Front Signal

Peak #	RetTime [min]	Type	Width [min]	Area [pA*s]	Height [pA]	Area %
1	4.223	BB	0.0563	19.54231	4.81724	0.03673
2	9.449	BB	0.0473	9.98179	3.29835	0.01876
3	9.632	BB	0.0514	343.88467	104.44788	0.64629
4	11.745	BB	0.0433	5.24919	1.84007	0.00987
5	12.352	BV	0.0398	5.84443	2.28549	0.01098
6	12.451	VB	0.0453	106.96431	36.36068	0.20103
7	12.696	BV	0.0418	221.88751	84.04734	0.41701
8	12.995	VB	0.1158	1.14437e4	1204.75806	21.50711
9	14.044	BB	0.0447	6.25827	2.23614	0.01176

Sample Name: BALSAM TOLU OIL (BMV)

Peak #	RetTime [min]	Type	Width [min]	Area [pA*s]	Height [pA]	Area %
10	14.623	BB	0.0750	23.04399	4.13441	0.04331
11	17.605	BV	0.2649	1406.75146	62.90702	2.64384
12	17.784	VB	0.1178	747.97089	76.66209	1.40573
13	19.579	BB	0.0629	1170.84729	285.01178	2.20048
14	20.017	BB	0.0896	35.98277	5.34036	0.06763
15	20.660	BB	0.0826	5687.11035	866.55261	10.68831
16	21.165	BB	0.0413	12.64898	4.87037	0.02377
17	21.477	BB	0.0441	50.22738	17.72333	0.09440
18	21.773	BB	0.0432	378.74716	137.36995	0.71181
19	21.946	BB	0.0433	11.45065	4.41571	0.02152
20	22.217	BB	0.0518	2120.05176	637.68951	3.98441
21	22.444	BV	0.0450	576.94849	198.22093	1.08431
22	22.573	VB	0.0637	84.37452	18.34008	0.15857
23	22.837	BV	0.0483	9.99156	3.12517	0.01878
24	22.990	VV	0.1048	439.00439	55.79150	0.82506
25	23.335	VB	0.0514	1558.27319	473.71106	2.92861
26	23.522	BB	0.0480	6.07452	1.96992	0.01142
27	24.145	BV	0.1197	1123.77490	117.33990	2.11201
28	24.325	VV	0.0942	893.13025	118.10347	1.67854
29	24.435	VV	0.0703	1527.36548	305.74768	2.87052
30	24.589	VV	0.0478	44.61479	13.41679	0.08385
31	24.653	VV	0.0528	92.72634	26.53510	0.17427
32	24.746	VB	0.0680	26.14299	4.99899	0.04913
33	24.865	BV	0.0564	15.20511	3.82653	0.02858
34	24.992	VV	0.0628	27.07251	5.97795	0.05088
35	25.135	VV	0.0674	49.26200	10.18945	0.09258
36	25.212	VB	0.0490	47.41171	14.54090	0.08911
37	25.553	BB	0.0503	11.65239	3.55137	0.02190
38	25.753	BV	0.0468	473.92041	150.34979	0.89068
39	25.925	VB	0.0498	651.63000	206.54596	1.22467
40	26.255	BB	0.0404	5.54258	2.12377	0.01042
41	26.624	BB	0.0484	967.44720	309.90012	1.81821
42	27.110	BV	0.0508	13.79619	4.25821	0.02593
43	27.231	VB	0.0557	49.51689	13.22642	0.09306
44	28.192	BB	0.0481	9.81119	3.26334	0.01844
45	28.501	BB	0.0445	9.70915	3.38012	0.01825
46	29.152	BB	0.0516	7.14788	2.15832	0.01343
47	31.361	BB	0.1169	1.82733e4	1939.49976	34.34267
48	37.021	BB	0.0506	9.93466	3.08519	0.01867
49	37.395	BB	0.0618	2305.14697	509.09653	4.33227
50	38.506	BV	0.0508	52.95846	15.92402	0.09953
51	38.599	VB	0.0499	28.10813	8.64514	0.05283
52	43.410	BB	0.0541	9.61728	2.60372	0.01807

Totals : 5.32087e4 8096.21555

*** End of Report ***