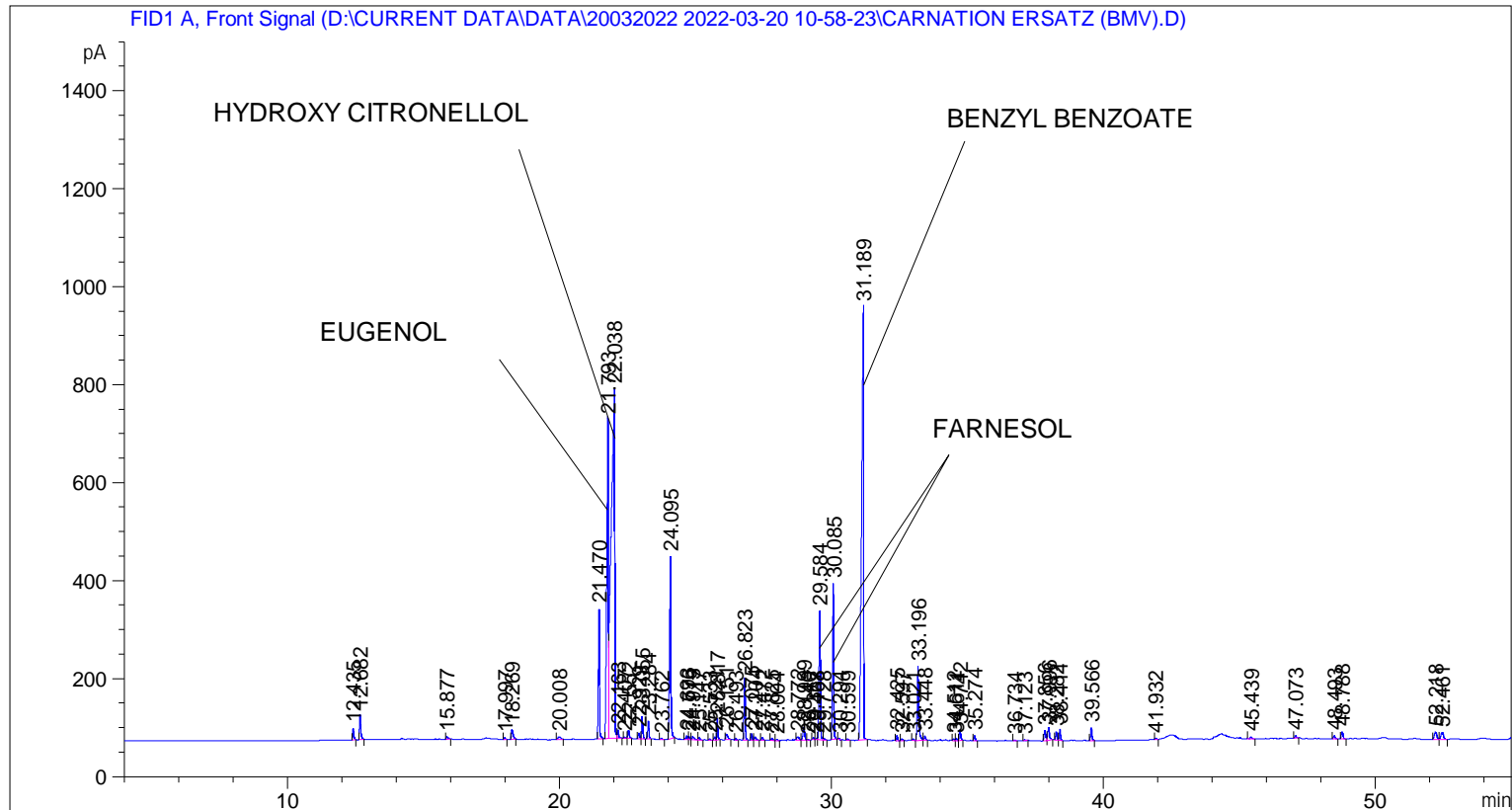


```

=====
Acq. Operator   : SYSTEM                               Seq. Line :    4
Acq. Instrument : BMV_NEW_GC_7820                     Location  : Vial 104
Injection Date  : 20-Mar-22 2:29:10 PM                Inj       :    1
                                                    Inj Volume: 0.5 µl

Acq. Method     : D:\CURRENT DATA\DATA\20032022 2022-03-20 10-58-23\UNIVERSAL BMV.M
Last changed    : 20-Mar-22 10:58:34 AM by SYSTEM
Analysis Method : C:\CHEM32\2\METHODS\COOLING.M
Last changed    : 28-Mar-22 10:57:52 AM by SYSTEM
                  (modified after loading)

Additional Info : Peak(s) manually integrated
  
```



Area Percent Report

```

Sorted By      :      Signal
Multiplier     :      1.0000
Dilution       :      1.0000
Do not use Multiplier & Dilution Factor with ISTDs
  
```

Signal 1: FID1 A, Front Signal

Peak #	RetTime [min]	Type	Width [min]	Area [pA*s]	Height [pA]	Area %
1	12.435	BB	0.0471	72.93743	23.57209	0.34538
2	12.682	BB	0.0511	172.75175	50.21515	0.81803
3	15.877	BB	0.0693	28.37695	5.88455	0.13437
4	17.997	BB	0.0527	13.78604	4.04790	0.06528
5	18.269	BB	0.0636	92.28630	20.86563	0.43700
6	20.008	BB	0.0898	39.40988	5.62234	0.18662
7	21.470	BB	0.0447	790.61279	265.85031	3.74380

Sample Name: CARNATION ERSATZ (BMV)

Peak #	RetTime [min]	Type	Width [min]	Area [pA*s]	Height [pA]	Area %
8	21.793	BV	0.0501	2462.96411	650.99738	11.66291
9	22.038	VV	0.1111	6424.81348	713.24585	30.42350
10	22.163	VB	0.0591	70.09124	16.98728	0.33190
11	22.407	BB	0.0411	7.03233	2.72927	0.03330
12	22.552	BB	0.0538	62.25331	17.36670	0.29479
13	22.929	BV	0.0522	40.38508	11.71755	0.19124
14	23.055	VB	0.0480	149.67416	47.22343	0.70875
15	23.284	BB	0.0513	118.92644	36.24253	0.56315
16	23.762	BB	0.0618	10.28857	2.51339	0.04872
17	24.095	BB	0.0558	1300.21838	371.46146	6.15694
18	24.693	BV	0.0624	32.80372	7.74620	0.15534
19	24.776	VV	0.0460	22.87643	7.62492	0.10833
20	24.913	VB	0.0729	39.51876	7.44954	0.18713
21	25.147	BB	0.0619	17.04621	4.07050	0.08072
22	25.533	BB	0.0439	7.79026	2.76070	0.03689
23	25.721	BV	0.0451	17.61998	6.40542	0.08344
24	25.817	VB	0.0467	128.29506	43.10588	0.60752
25	26.151	BB	0.0668	57.29294	11.76816	0.27130
26	26.493	BB	0.0412	8.01368	3.20207	0.03795
27	26.823	BB	0.0465	387.87198	127.45768	1.83670
28	27.075	BV	0.0484	40.67377	13.02415	0.19260
29	27.204	VB	0.0677	33.36508	7.11274	0.15799
30	27.472	BB	0.0516	21.33968	6.12589	0.10105
31	27.825	BB	0.0546	20.07926	5.24675	0.09508
32	28.004	BB	0.0548	9.10133	2.54278	0.04310
33	28.772	BV	0.0767	39.49520	6.91240	0.18702
34	28.999	VV	0.0657	111.69357	25.68429	0.52890
35	29.140	VB	0.0241	1.48537	1.43476	0.00703
36	29.357	BV	0.0503	12.80644	3.71053	0.06064
37	29.468	VV	0.0480	9.97562	3.06260	0.04724
38	29.584	VV	0.0548	942.86884	263.03189	4.46478
39	29.728	VB	0.0633	15.72017	3.72198	0.07444
40	30.085	BB	0.0506	1052.07678	318.01617	4.98191
41	30.294	BB	0.0410	7.74610	3.01393	0.03668
42	30.599	BB	0.0525	8.81674	2.67425	0.04175
43	31.189	BB	0.0680	4624.60400	884.10730	21.89895
44	32.425	BB	0.0483	31.77654	10.50455	0.15047
45	32.597	BB	0.0493	12.85289	3.91983	0.06086
46	33.021	BB	0.0552	12.80189	3.45847	0.06062
47	33.196	BB	0.0597	591.27795	151.08310	2.79989
48	33.448	BB	0.0579	34.14223	8.87735	0.16167
49	34.512	BV	0.0544	11.02373	3.10284	0.05220
50	34.611	VV	0.0520	14.93970	4.47384	0.07074
51	34.742	VB	0.0583	79.21877	21.36154	0.37513
52	35.274	BB	0.0534	34.95098	10.63253	0.16550
53	36.734	BB	0.0572	9.14264	2.46873	0.04329
54	37.123	BB	0.0407	5.46153	2.38445	0.02586
55	37.856	BV	0.0616	78.64114	20.10695	0.37239
56	37.996	VB	0.0654	118.13641	25.82151	0.55941
57	38.282	BV	0.0501	55.40922	16.95338	0.26238
58	38.411	VB	0.0535	76.56942	22.05081	0.36258
59	39.566	BB	0.0533	93.30627	27.00875	0.44183
60	41.932	BB	0.0488	9.65306	3.06088	0.04571
61	45.439	BB	0.0694	18.56426	3.70659	0.08791

Peak #	RetTime [min]	Type	Width [min]	Area [pA*s]	Height [pA]	Area %
62	47.073	BB	0.0568	21.98688	5.72586	0.10411
63	48.493	BB	0.0718	30.28674	6.57345	0.14342
64	48.788	BB	0.0694	64.02969	14.80746	0.30320
65	52.218	BV	0.0861	94.75997	14.53434	0.44872
66	52.461	VB	0.0867	91.21037	14.06385	0.43191

Totals : 2.11179e4 4414.23732

=====

*** End of Report ***