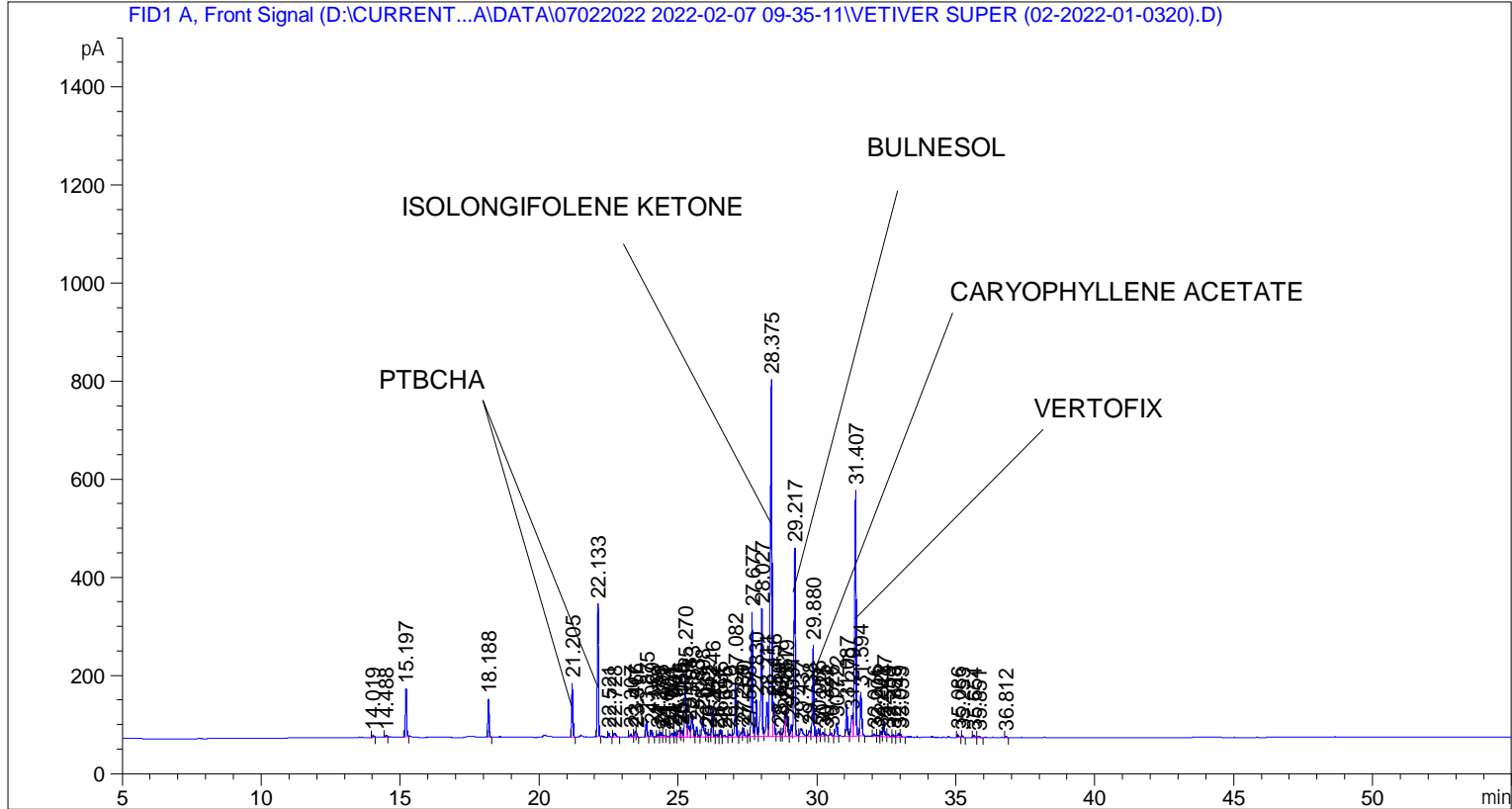


```

=====
Acq. Operator   : SYSTEM                               Seq. Line :    3
Acq. Instrument : BMV_NEW_GC_7820                     Location  : Vial 103
Injection Date  : 07-Feb-22 11:55:50 AM                Inj       :    1
                                                    Inj Volume: 0.5 µl

Acq. Method     : D:\CURRENT DATA\DATA\07022022 2022-02-07 09-35-11\UNIVERSAL BMV.M
Last changed    : 07-Feb-22 9:35:21 AM by SYSTEM
Analysis Method : C:\CHEM32\2\METHODS\COOLING.M
Last changed    : 03-Mar-22 11:53:49 AM by SYSTEM
                (modified after loading)

Additional Info : Peak(s) manually integrated
    
```



=====
Area Percent Report
=====

```

Sorted By      :      Signal
Multiplier     :      1.0000
Dilution       :      1.0000
Do not use Multiplier & Dilution Factor with ISTDs
    
```

Signal 1: FID1 A, Front Signal

Peak #	RetTime [min]	Type	Width [min]	Area [pA*s]	Height [pA]	Area %
1	14.019	BB	0.0512	14.32313	4.16043	0.09183
2	14.488	BB	0.0532	12.81460	3.63299	0.08216
3	15.197	BB	0.0450	285.22885	97.90028	1.82863
4	18.188	BB	0.0464	228.87228	77.70189	1.46733
5	21.205	BB	0.0452	320.92795	109.42007	2.05751
6	22.133	BB	0.0447	782.26599	270.42990	5.01520
7	22.521	BB	0.0502	26.77603	8.18438	0.17166

Sample Name: VETIVER SUPER (02-2022-01-0320)

Peak #	RetTime [min]	Type	Width [min]	Area [pA*s]	Height [pA]	Area %
8	22.728	BB	0.0788	44.07959	8.18490	0.28260
9	23.307	BB	0.0657	29.61603	6.19967	0.18987
10	23.466	BV	0.0509	40.81690	11.93473	0.26168
11	23.517	VB	0.0431	25.16085	8.85991	0.16131
12	23.875	BB	0.0475	110.48007	36.27811	0.70830
13	24.069	BB	0.0448	37.01717	12.79311	0.23732
14	24.289	BV	0.0529	20.46973	5.98939	0.13123
15	24.395	VV	0.0532	36.94167	10.20395	0.23684
16	24.472	VB	0.0657	22.18817	4.56707	0.14225
17	24.603	BB	0.0580	13.93358	3.31936	0.08933
18	24.801	BV	0.0627	37.32584	8.76314	0.23930
19	24.901	VV	0.0512	33.37363	10.18420	0.21396
20	25.036	VV	0.0510	50.91264	14.48204	0.32641
21	25.085	VV	0.0425	35.86503	12.47363	0.22993
22	25.158	VV	0.0500	42.69436	13.09532	0.27372
23	25.270	VV	0.0525	463.89185	127.45193	2.97406
24	25.403	VV	0.0751	127.24033	22.47131	0.81575
25	25.513	VV	0.0620	210.50124	48.13757	1.34955
26	25.683	VV	0.0551	76.89541	20.82778	0.49299
27	25.898	VV	0.0660	196.61838	42.51733	1.26054
28	26.051	VV	0.0557	32.20925	8.40004	0.20650
29	26.142	VV	0.0577	23.45978	5.85680	0.15040
30	26.246	VV	0.0515	187.33308	56.71394	1.20101
31	26.411	VV	0.0574	18.87168	5.18942	0.12099
32	26.536	VV	0.0507	50.20000	15.54830	0.32184
33	26.695	VV	0.0688	21.33038	4.37780	0.13675
34	26.870	VV	0.0715	29.91322	5.86607	0.19178
35	27.082	VV	0.0511	369.09323	112.91444	2.36630
36	27.289	VV	0.0583	40.55184	10.22218	0.25998
37	27.370	VV	0.0565	64.27860	17.22650	0.41210
38	27.558	VV	0.0486	19.21899	5.95593	0.12322
39	27.677	VV	0.0486	840.37500	253.73492	5.38774
40	27.830	VV	0.0578	290.85690	75.78581	1.86472
41	28.027	VV	0.0583	990.80310	261.12836	6.35215
42	28.211	VV	0.0606	288.05133	70.65099	1.84673
43	28.375	VV	0.0556	2843.07056	726.73938	18.22725
44	28.456	VV	0.0622	281.20389	70.95929	1.80283
45	28.649	VV	0.0799	66.76188	11.47741	0.42802
46	28.724	VV	0.0488	23.32123	7.19907	0.14952
47	28.857	VV	0.0528	163.16995	44.52238	1.04610
48	28.919	VV	0.0564	243.33969	59.86077	1.56008
49	29.091	VV	0.0521	83.26990	24.20033	0.53385
50	29.217	VB	0.0523	1296.32544	384.57452	8.31089
51	29.437	BV	0.0974	118.29732	15.79061	0.75842
52	29.738	VV	0.0738	63.74661	11.65210	0.40869
53	29.880	VV	0.0539	634.39282	185.46211	4.06717
54	30.066	VV	0.0530	57.08416	15.86143	0.36597
55	30.225	VV	0.0705	37.84367	7.68363	0.24262
56	30.321	VB	0.0528	10.21185	2.91997	0.06547
57	30.526	BB	0.0470	17.62065	5.86518	0.11297
58	30.722	BV	0.0625	112.28580	26.99010	0.71988
59	31.087	BV	0.0538	227.29083	65.02654	1.45719
60	31.270	VV	0.0598	166.51099	42.38260	1.06752
61	31.407	VB	0.0555	1866.97693	500.78275	11.96940

Peak #	RetTime [min]	Type	Width [min]	Area [pA*s]	Height [pA]	Area %
62	31.594	BB	0.0576	351.42215	89.91748	2.25301
63	32.076	BV	0.0599	23.99163	5.72189	0.15381
64	32.201	VV	0.0584	11.57152	3.10742	0.07419
65	32.322	VV	0.0537	37.48924	11.01696	0.24035
66	32.417	VV	0.0555	106.57201	28.56337	0.68325
67	32.559	VV	0.0784	37.32594	6.46235	0.23930
68	32.759	VV	0.0491	14.05157	4.42010	0.09009
69	32.949	VV	0.0655	31.08101	6.77665	0.19926
70	33.033	VB	0.0472	13.77700	4.69445	0.08833
71	35.086	BB	0.0481	15.84543	5.12378	0.10159
72	35.253	BB	0.0461	8.88594	3.22907	0.05697
73	35.654	BB	0.0591	18.84977	4.98352	0.12085
74	35.851	BB	0.0640	13.43043	2.95407	0.08610
75	36.812	BB	0.0465	7.11530	2.27724	0.04562

Totals : 1.55979e4 4298.93438

=====
*** End of Report ***