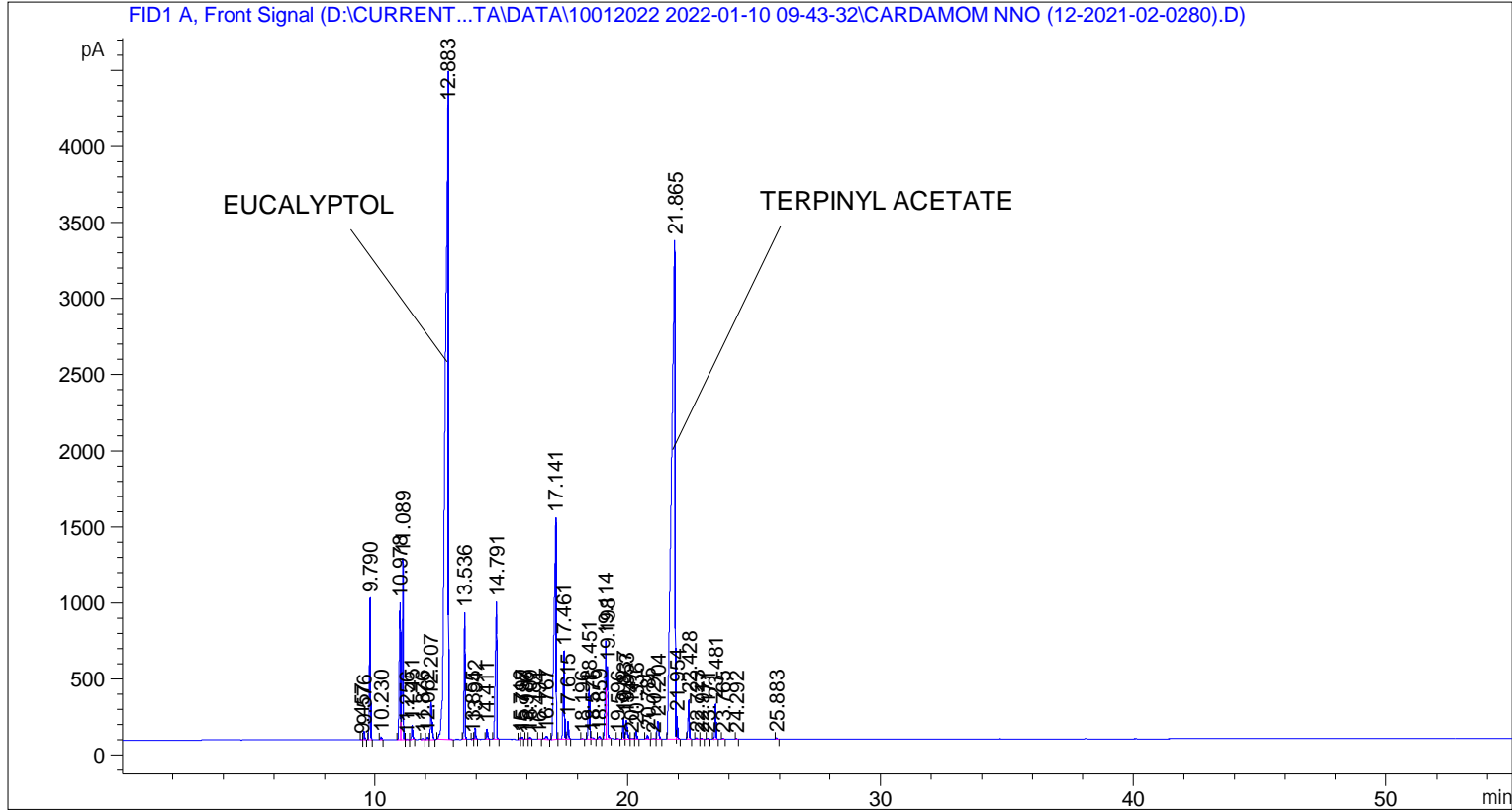


```

=====
Acq. Operator   : SYSTEM                               Seq. Line :    3
Acq. Instrument : BMV_NEW_GC_7820                     Location  : Vial 103
Injection Date  : 10-Jan-22 12:03:41 PM                Inj       :    1
                                                    Inj Volume: 0.5 µl

Acq. Method    : D:\CURRENT DATA\DATA\10012022 2022-01-10 09-43-32\UNIVERSAL BMV.M
Last changed   : 10-Jan-22 9:43:43 AM by SYSTEM
Analysis Method: C:\CHEM32\2\METHODS\COOLING.M
Last changed   : 03-Mar-22 1:55:13 PM by SYSTEM
                (modified after loading)
  
```



=====
 Area Percent Report
 =====

```

Sorted By      :      Signal
Multiplier     :      1.0000
Dilution       :      1.0000
Do not use Multiplier & Dilution Factor with ISTDs
  
```

Signal 1: FID1 A, Front Signal

Peak #	RetTime [min]	Type	Width [min]	Area [pA*s]	Height [pA]	Area %
1	9.457	BV	0.0429	6.79577	2.48443	0.00640
2	9.576	VB	0.0437	166.94739	59.50113	0.15728
3	9.790	BB	0.0454	2662.15894	928.67767	2.50800
4	10.230	BB	0.0508	50.52556	14.82563	0.04760
5	10.978	BV	0.0643	3489.17871	898.74005	3.28713
6	11.089	VB	0.0443	3498.58032	1189.69006	3.29599
7	11.256	BV	0.0513	11.69519	3.47190	0.01102
8	11.451	VB	0.0485	290.53091	92.90434	0.27371

Peak #	RetTime [min]	Type	Width [min]	Area [pA*s]	Height [pA]	Area %
9	11.876	BB	0.0608	21.54848	5.37568	0.02030
10	12.062	BV	0.0513	49.38207	15.03288	0.04652
11	12.207	VB	0.0679	1036.09863	247.19627	0.97610
12	12.883	BB	0.1012	3.59554e4	4358.25732	33.87338
13	13.536	BB	0.0480	2499.23291	833.21100	2.35451
14	13.855	BV	0.0402	16.66085	6.66645	0.01570
15	13.942	VB	0.0451	225.79488	77.18969	0.21272
16	14.411	BB	0.0486	220.85503	68.50108	0.20807
17	14.791	BB	0.0603	3734.49146	901.66760	3.51824
18	15.719	BV	0.0472	32.75465	10.84197	0.03086
19	15.797	VB	0.0463	43.94665	14.51061	0.04140
20	15.986	BV	0.0474	6.91378	2.27917	0.00651
21	16.109	VB	0.0572	54.48413	15.06680	0.05133
22	16.494	BB	0.0508	10.01098	3.08827	0.00943
23	16.767	BB	0.0807	119.31125	21.19444	0.11240
24	17.141	BV	0.0695	7947.19824	1459.85034	7.48701
25	17.461	VV	0.0506	2059.84912	577.50311	1.94057
26	17.615	VB	0.0460	348.78299	116.20542	0.32859
27	18.196	BB	0.0473	11.71953	3.87393	0.01104
28	18.451	BV	0.0562	1277.00049	336.90555	1.20305
29	18.576	VB	0.0829	60.95361	11.47975	0.05742
30	18.859	BB	0.0634	72.89571	17.92636	0.06867
31	19.114	BV	0.0599	2472.18652	642.75049	2.32903
32	19.198	VB	0.0515	1775.92603	476.03873	1.67309
33	19.596	BB	0.0511	11.38095	3.48133	0.01072
34	19.837	BV	0.0474	403.89447	136.84200	0.38051
35	19.953	VV	0.0646	564.96747	122.91424	0.53225
36	20.147	VV	0.0890	31.75122	4.87538	0.02991
37	20.336	VB	0.0485	177.71718	55.21896	0.16743
38	20.785	BB	0.0570	93.81264	24.29780	0.08838
39	21.021	BV	0.0710	19.04360	3.83250	0.01794
40	21.204	VB	0.0725	541.51276	118.18787	0.51016
41	21.865	BV	0.1256	3.19245e4	3278.13135	30.07590
42	21.954	VB	0.0428	419.22488	149.18903	0.39495
43	22.428	BB	0.0490	877.31348	262.47400	0.82651
44	22.723	BB	0.0648	40.43442	9.66910	0.03809
45	22.917	BB	0.0494	18.47784	5.76725	0.01741
46	23.171	BB	0.0530	18.28920	5.20270	0.01723
47	23.481	BB	0.0491	719.24072	232.49127	0.67759
48	23.765	BB	0.0554	17.78790	4.78421	0.01676
49	24.292	BB	0.0472	12.38075	4.09946	0.01166
50	25.883	BB	0.0484	24.95051	8.23241	0.02351

Totals : 1.06147e5 1.78426e4

=====
*** End of Report ***