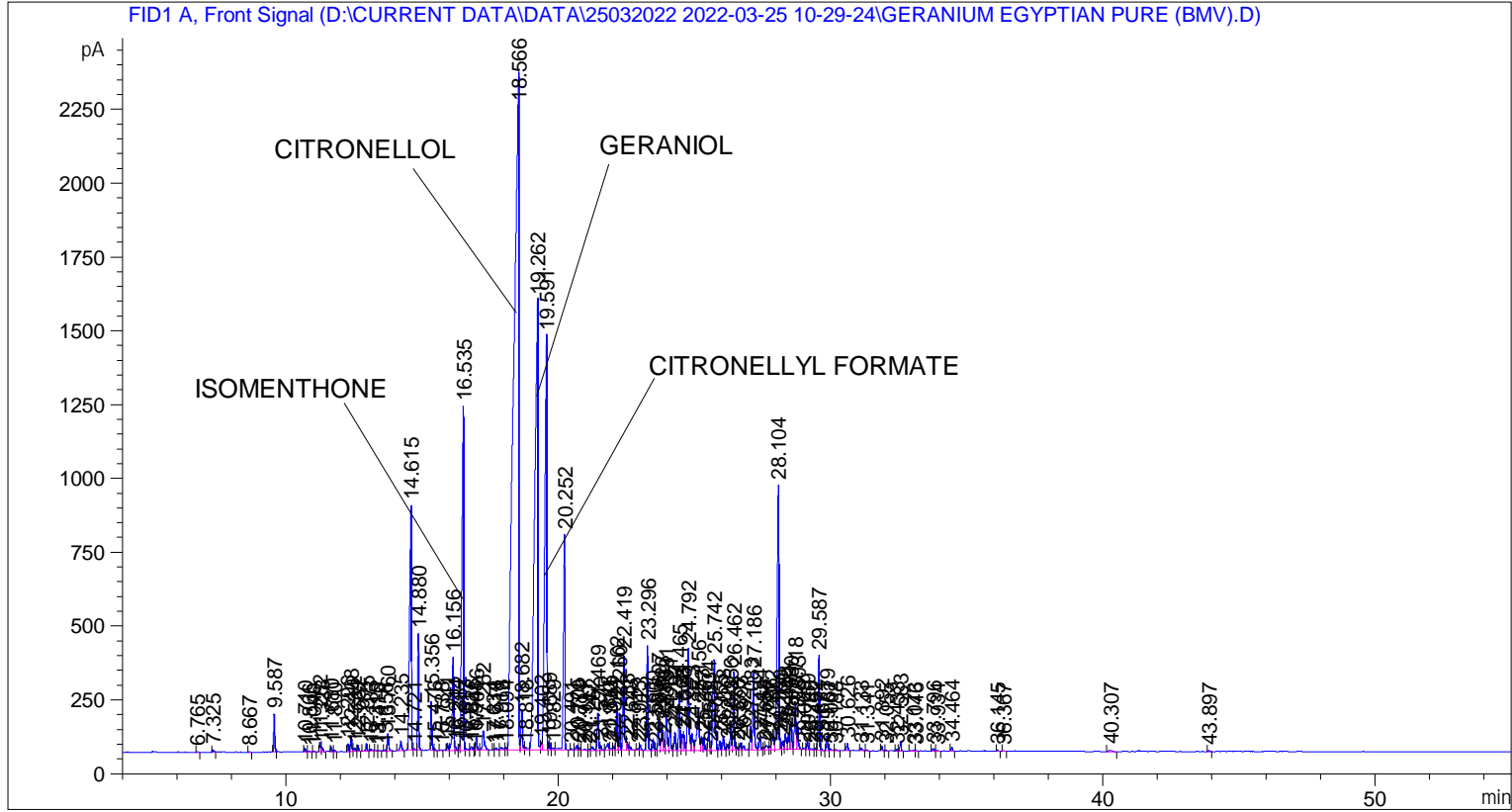


```

=====
Acq. Operator   : SYSTEM                               Seq. Line :    3
Acq. Instrument : BMV_NEW_GC_7820                     Location  : Vial 103
Injection Date  : 25-Mar-22 12:54:20 PM                Inj       :    1
                                                    Inj Volume: 0.5 µl

Acq. Method     : D:\CURRENT DATA\DATA\25032022 2022-03-25 10-29-24\UNIVERSAL BMV.M
Last changed    : 25-Mar-22 10:29:34 AM by SYSTEM
Analysis Method : C:\CHEM32\2\METHODS\COOLING.M
Last changed    : 18-Apr-22 10:49:36 AM by SYSTEM
                (modified after loading)
  
```



=====
 Area Percent Report
 =====

```

Sorted By      : Signal
Multiplier     : 1.0000
Dilution      : 1.0000
Do not use Multiplier & Dilution Factor with ISTDs
  
```

Signal 1: FID1 A, Front Signal

Peak #	RetTime [min]	Type	Width [min]	Area [pA*s]	Height [pA]	Area %
1	6.765	BB	0.0472	9.93853	3.20704	0.01096
2	7.325	BB	0.0503	30.32829	8.36884	0.03344
3	8.667	BB	0.0471	7.78013	2.58467	0.00858
4	9.587	BV	0.0455	373.61322	130.11180	0.41194
5	10.710	BB	0.0462	40.28363	13.36692	0.04442
6	10.866	BB	0.0499	8.53126	2.69976	0.00941
7	11.040	BB	0.0508	11.12780	3.26534	0.01227
8	11.262	BV	0.0431	92.47459	32.63133	0.10196

Sample Name: GERANIUM EGYPTIAN PURE (BMV)

Peak #	RetTime [min]	Type	Width [min]	Area [pA*s]	Height [pA]	Area %
9	11.328	VB	0.0639	69.13152	14.44087	0.07622
10	11.680	BB	0.0424	42.72078	15.38649	0.04710
11	11.800	BB	0.0464	20.20938	6.66051	0.02228
12	12.296	BV	0.0431	73.65652	26.74079	0.08121
13	12.408	VV	0.0484	166.56476	53.34433	0.18365
14	12.534	VV	0.0697	59.27484	11.58225	0.06536
15	12.662	VB	0.0459	56.16677	19.31193	0.06193
16	12.975	BB	0.0475	84.93261	27.12796	0.09364
17	13.133	BB	0.0566	30.01787	7.52230	0.03310
18	13.315	BV	0.0408	5.58727	2.26016	0.00616
19	13.410	VB	0.0368	5.11444	2.14987	0.00564
20	13.656	BV	0.0394	8.86397	3.51330	0.00977
21	13.760	VB	0.0525	208.27130	60.02871	0.22963
22	14.235	BB	0.0594	132.46909	31.93900	0.14606
23	14.615	BV	0.0607	3811.19556	828.07245	4.20213
24	14.721	VV	0.0565	17.22672	4.32251	0.01899
25	14.880	VB	0.0443	1126.65955	395.22348	1.24223
26	15.356	BV	0.0441	465.39301	163.96332	0.51313
27	15.476	VB	0.0488	18.68288	5.92224	0.02060
28	15.738	BV	0.0623	17.93181	4.07680	0.01977
29	15.941	BV	0.0501	76.03618	23.92353	0.08384
30	16.156	VV	0.0548	1132.44910	315.79977	1.24861
31	16.244	VV	0.0517	41.21272	12.75859	0.04544
32	16.382	VV	0.0367	44.85253	18.91268	0.04945
33	16.535	VV	0.0632	5303.66455	1163.63220	5.84769
34	16.617	VB	0.0798	34.99117	6.10876	0.03858
35	16.828	BV	0.0741	59.02054	10.91783	0.06507
36	16.948	VV	0.0368	14.63671	6.13734	0.01614
37	17.016	VB	0.0485	139.34518	44.56531	0.15364
38	17.262	BB	0.0761	326.39145	63.35596	0.35987
39	17.634	BV	0.0416	8.15802	3.00971	0.00899
40	17.718	VV	0.0631	29.41382	6.58739	0.03243
41	17.918	VV	0.0903	56.75031	8.67733	0.06257
42	18.094	VV	0.0666	35.67614	8.06598	0.03934
43	18.566	VV	0.1602	2.98941e4	2292.05811	32.96048
44	18.682	VV	0.0533	491.76208	135.48578	0.54221
45	18.818	VV	0.0842	60.80236	9.68886	0.06704
46	19.262	VV	0.1028	1.23820e4	1523.13586	13.65205
47	19.402	VV	0.0417	72.76365	25.99053	0.08023
48	19.591	VV	0.0713	7487.58594	1401.07568	8.25563
49	19.689	VV	0.0424	91.83589	33.06980	0.10126
50	19.829	VV	0.0755	41.43911	7.73178	0.04569
51	20.252	VB	0.0579	2679.90259	729.54102	2.95480
52	20.491	BB	0.0443	12.15060	4.53613	0.01340
53	20.705	BV	0.0589	63.09113	15.35187	0.06956
54	20.779	VV	0.0459	25.77645	8.61178	0.02842
55	20.991	VV	0.0709	18.25668	3.61383	0.02013
56	21.147	VV	0.0455	11.67587	3.94591	0.01287
57	21.262	VV	0.0814	61.42617	11.66571	0.06773
58	21.469	VV	0.0505	403.86502	125.61960	0.44529
59	21.570	VB	0.0522	60.79843	17.65905	0.06703
60	21.846	BV	0.0666	117.49613	22.98852	0.12955
61	21.913	VV	0.0771	37.41130	6.40769	0.04125
62	22.044	VV	0.0535	45.31960	12.73119	0.04997

Sample Name: GERANIUM EGYPTIAN PURE (BMV)

Peak #	RetTime [min]	Type	Width [min]	Area [pA*s]	Height [pA]	Area %
63	22.162	VV	0.0469	468.61804	156.74881	0.51669
64	22.260	VV	0.0469	361.00830	124.28266	0.39804
65	22.419	VV	0.0513	1118.60205	323.67935	1.23334
66	22.538	VV	0.0482	96.04473	28.55116	0.10590
67	22.643	VB	0.0676	53.90459	12.67773	0.05943
68	22.945	BV	0.0621	20.00948	5.41917	0.02206
69	23.023	VB	0.0509	60.17055	18.03249	0.06634
70	23.296	BV	0.0530	1212.05896	353.70236	1.33639
71	23.500	VV	0.0466	120.38899	39.47921	0.13274
72	23.585	VV	0.0466	18.05634	5.92487	0.01991
73	23.697	VV	0.0481	315.05649	101.93882	0.34737
74	23.823	VV	0.0557	333.64966	89.16505	0.36787
75	23.880	VV	0.0380	93.45670	37.57895	0.10304
76	23.981	VV	0.0569	475.44778	120.80290	0.52422
77	24.121	VV	0.0525	303.24908	87.33949	0.33436
78	24.297	VV	0.0524	209.81821	60.53779	0.23134
79	24.465	VV	0.0475	621.80878	198.68240	0.68559
80	24.568	VV	0.0483	175.11177	54.84237	0.19307
81	24.626	VV	0.0576	192.64276	51.57911	0.21240
82	24.792	VV	0.0561	1302.35217	344.43719	1.43594
83	24.923	VV	0.0655	286.56430	60.22573	0.31596
84	25.156	VV	0.0816	862.94244	144.69977	0.95146
85	25.273	VV	0.0574	179.44691	47.13602	0.19785
86	25.367	VV	0.0530	153.39188	43.65416	0.16913
87	25.534	VV	0.0490	228.12059	71.92020	0.25152
88	25.604	VV	0.0363	25.59347	10.56401	0.02822
89	25.742	VV	0.0729	1633.04028	307.59879	1.80055
90	25.955	VV	0.0511	106.01220	31.64090	0.11689
91	26.078	VV	0.0582	181.10172	45.76795	0.19968
92	26.229	VV	0.0545	75.34022	20.19945	0.08307
93	26.356	VV	0.0481	271.20874	85.37112	0.29903
94	26.462	VV	0.0514	852.55981	266.30380	0.94001
95	26.576	VV	0.0486	34.70264	11.07301	0.03826
96	26.693	VV	0.0493	77.63905	24.30636	0.08560
97	26.827	VV	0.0701	74.03126	15.11394	0.08163
98	27.083	VV	0.0493	264.77527	80.75742	0.29193
99	27.186	VV	0.0560	979.41156	259.76361	1.07988
100	27.424	VV	0.0592	176.43021	44.54395	0.19453
101	27.558	VV	0.0468	25.68592	7.93108	0.02832
102	27.657	VV	0.0896	94.74354	13.55328	0.10446
103	27.786	VV	0.0491	36.94897	11.32840	0.04074
104	27.872	VV	0.0784	244.38727	41.67061	0.26946
105	28.104	VV	0.0646	4117.15234	895.93768	4.53947
106	28.160	VV	0.0378	92.76402	38.86353	0.10228
107	28.259	VV	0.0481	91.75341	29.66011	0.10117
108	28.353	VV	0.0632	234.25870	53.40960	0.25829
109	28.472	VV	0.0499	170.04526	50.94382	0.18749
110	28.560	VV	0.0664	376.06552	88.84531	0.41464
111	28.718	VV	0.0673	664.47504	151.20053	0.73263
112	28.803	VB	0.0499	296.46915	86.67416	0.32688
113	29.029	BV	0.0544	14.03796	3.86078	0.01548
114	29.159	VV	0.0522	95.35841	26.33860	0.10514
115	29.280	VV	0.0724	20.93242	3.52030	0.02308
116	29.452	VV	0.0486	20.73082	6.99150	0.02286

Peak #	RetTime [min]	Type	Width [min]	Area [pA*s]	Height [pA]	Area %
117	29.587	VV	0.0472	995.36804	321.19998	1.09747
118	29.671	VB	0.0392	11.42270	4.72062	0.01259
119	29.879	BV	0.0568	178.23636	48.59584	0.19652
120	30.002	VB	0.0583	23.90228	5.89331	0.02635
121	30.188	BB	0.0676	16.21580	3.59555	0.01788
122	30.626	BB	0.0536	81.64233	22.89390	0.09002
123	31.133	BB	0.0607	35.52392	8.69184	0.03917
124	31.341	BB	0.0544	9.43742	2.72431	0.01041
125	31.892	BB	0.0487	54.09153	16.74785	0.05964
126	32.055	BB	0.0443	8.54817	2.82156	0.00943
127	32.433	BV	0.0460	20.44988	6.61833	0.02255
128	32.583	VB	0.0497	102.90154	31.83857	0.11346
129	33.073	BV	0.1026	24.13558	3.04246	0.02661
130	33.146	VB	0.0481	8.49017	2.74357	0.00936
131	33.796	BV	0.0578	38.60086	8.85839	0.04256
132	33.934	VB	0.0572	10.55684	2.66303	0.01164
133	34.464	BB	0.0541	46.12808	12.49973	0.05086
134	36.145	BB	0.0512	13.74853	3.99475	0.01516
135	36.367	BB	0.0434	4.55784	1.74756	0.00503
136	40.307	BB	0.1022	35.59369	4.60444	0.03924
137	43.897	BB	0.0567	11.43452	2.91806	0.01261

Totals : 9.06967e4 1.57794e4

=====
*** End of Report ***