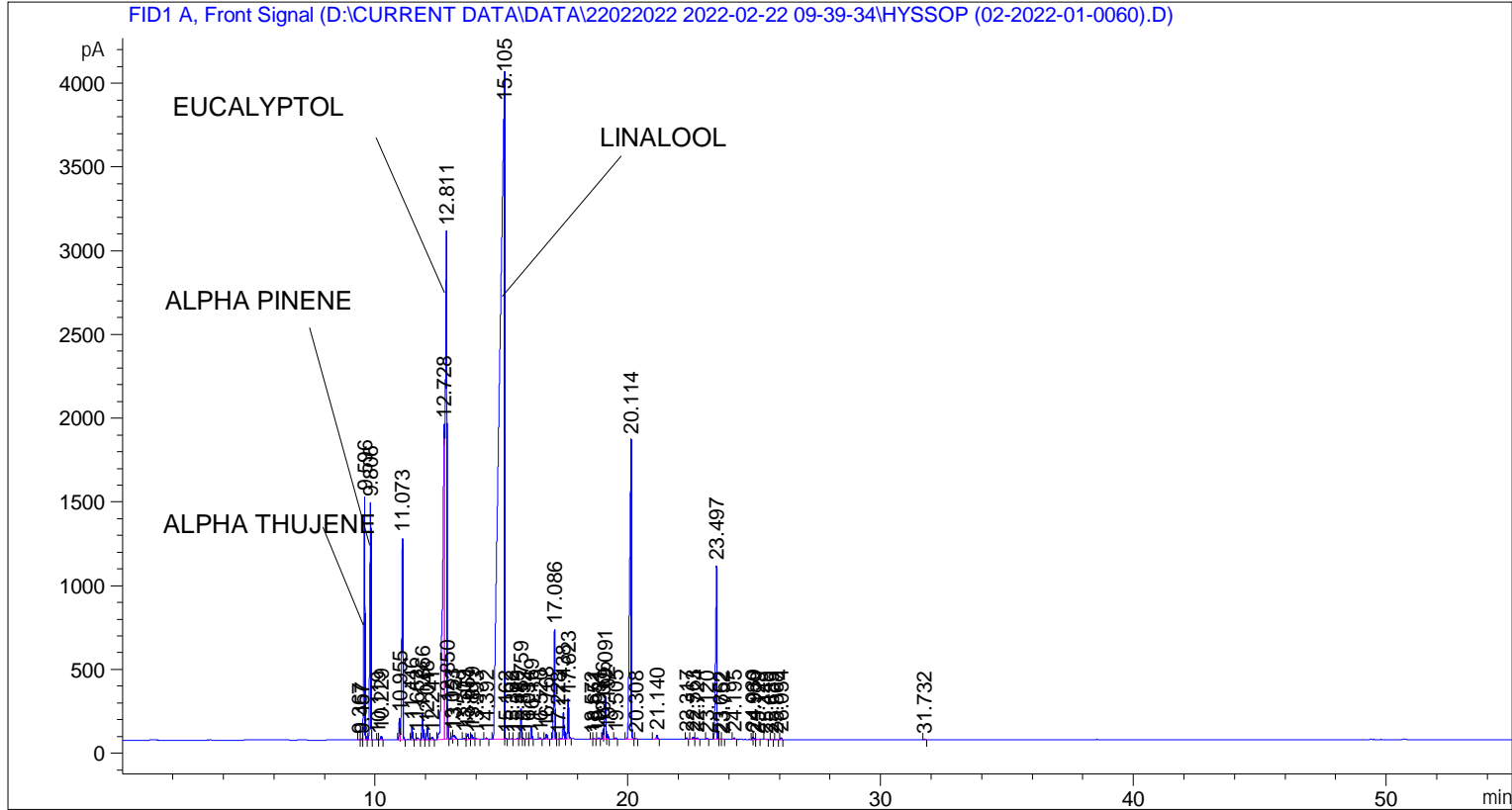


```

=====
Acq. Operator   : SYSTEM                               Seq. Line :    2
Acq. Instrument : BMV_NEW_GC_7820                     Location  : Vial 102
Injection Date  : 22-Feb-22 10:55:54 AM                Inj       :    1
                                                    Inj Volume: 0.5 µl

Acq. Method     : D:\CURRENT DATA\DATA\22022022 2022-02-22 09-39-34\UNIVERSAL BMV.M
Last changed    : 22-Feb-22 9:39:45 AM by SYSTEM
Analysis Method : C:\CHEM32\2\METHODS\COOLING.M
Last changed    : 04-Mar-22 10:37:57 AM by SYSTEM
                (modified after loading)
  
```



=====  
 Area Percent Report  
 =====

```

Sorted By      :      Signal
Multiplier     :      1.0000
Dilution       :      1.0000
Do not use Multiplier & Dilution Factor with ISTDs
  
```

Signal 1: FID1 A, Front Signal

Peak #	RetTime [min]	Type	Width [min]	Area [pA*s]	Height [pA]	Area %
1	9.367	BV	0.0422	5.93091	2.29015	0.00546
2	9.457	VV	0.0418	9.33669	3.53681	0.00860
3	9.596	VB	0.0502	4505.90771	1454.08887	4.14944
4	9.806	BB	0.0456	4092.50732	1419.88538	3.76874
5	10.119	BV	0.0424	12.45352	4.35524	0.01147
6	10.229	VB	0.0484	79.05305	24.67291	0.07280
7	10.955	BV	0.0504	400.20639	128.38863	0.36855
8	11.073	VB	0.0487	3681.36743	1204.54663	3.39013

Peak #	RetTime [min]	Type	Width [min]	Area [pA*s]	Height [pA]	Area %
9	11.446	BB	0.0445	231.14832	82.84966	0.21286
10	11.652	BB	0.0633	59.32728	12.97894	0.05463
11	11.866	BB	0.0466	454.99881	153.44130	0.41900
12	12.048	BB	0.0481	196.90324	65.36655	0.18133
13	12.241	BB	0.0547	49.34267	14.15955	0.04544
14	12.728	BV	0.0812	1.13335e4	1883.63110	10.43693
15	12.811	VV	0.0520	1.14289e4	3033.28369	10.52475
16	12.850	VB	0.0274	344.31305	187.89255	0.31707
17	13.053	BV	0.0474	58.36566	18.69937	0.05375
18	13.121	VB	0.0667	118.52047	23.56581	0.10914
19	13.509	BB	0.0443	21.70307	7.84127	0.01999
20	13.651	BV	0.0644	128.18396	31.55605	0.11804
21	13.819	VB	0.0651	109.54242	26.58039	0.10088
22	13.993	BB	0.0652	19.96927	4.64080	0.01839
23	14.392	BB	0.0564	23.51768	6.18098	0.02166
24	15.105	BV	0.1637	5.30733e4	3952.38403	48.87458
25	15.162	VB	0.0336	12.41379	5.66017	0.01143
26	15.392	BV	0.0643	14.02921	3.19301	0.01292
27	15.599	VV	0.0667	18.51051	3.87863	0.01705
28	15.759	VV	0.0417	485.16574	184.07484	0.44678
29	15.852	VB	0.0459	12.95619	4.21311	0.01193
30	16.034	BV	0.0431	8.99655	3.37293	0.00828
31	16.169	VB	0.0446	215.76511	74.89118	0.19870
32	16.520	BB	0.0428	25.25720	9.26171	0.02326
33	16.768	BB	0.0518	113.67374	32.48926	0.10468
34	17.086	BB	0.0502	2203.12842	656.12115	2.02883
35	17.228	BV	0.0398	5.58460	2.18987	0.00514
36	17.438	VV	0.0484	489.34583	156.83519	0.45063
37	17.623	VB	0.0437	690.02582	239.02951	0.63544
38	18.572	BV	0.0439	8.21862	2.75104	0.00757
39	18.651	VB	0.0518	15.79551	4.30360	0.01455
40	18.831	BB	0.0546	30.46020	8.33447	0.02805
41	19.006	BV	0.0425	157.90262	58.45494	0.14541
42	19.091	VV	0.0481	787.68506	254.44730	0.72537
43	19.192	VB	0.0465	78.69294	26.61781	0.07247
44	19.505	BB	0.0470	25.32001	8.43377	0.02332
45	20.114	BB	0.0633	8477.80176	1787.60437	7.80711
46	20.308	BB	0.0399	5.08946	2.12491	0.00469
47	21.140	BB	0.0550	92.43042	25.07321	0.08512
48	22.317	BB	0.0451	28.29006	9.97518	0.02605
49	22.563	BV	0.0554	48.17599	12.93741	0.04436
50	22.724	VB	0.0747	35.91819	6.89812	0.03308
51	23.120	BB	0.0471	15.19259	5.04986	0.01399
52	23.497	BB	0.0534	3862.96021	1037.38086	3.55735
53	23.662	BV	0.0486	6.75561	2.15214	0.00622
54	23.752	VB	0.0453	5.83594	1.93002	0.00537
55	24.195	BB	0.0545	28.54473	7.84339	0.02629
56	24.930	BV	0.0473	36.85109	11.83982	0.03394
57	24.989	VB	0.0401	19.25680	6.99190	0.01773
58	25.129	BB	0.0625	14.62796	3.52218	0.01347
59	25.449	BB	0.0737	15.41041	2.86609	0.01419
60	25.689	BB	0.0450	7.82120	2.60717	0.00720
61	25.868	BB	0.0530	7.87930	2.30059	0.00726
62	26.054	BB	0.0479	33.96801	11.35473	0.03128

Peak #	RetTime [min]	Type	Width [min]	Area [pA*s]	Height [pA]	Area %
63	31.732	BB	0.0501	10.72609	3.28866	0.00988

Totals : 1.08591e5 1.84291e4

=====  
\*\*\* End of Report \*\*\*