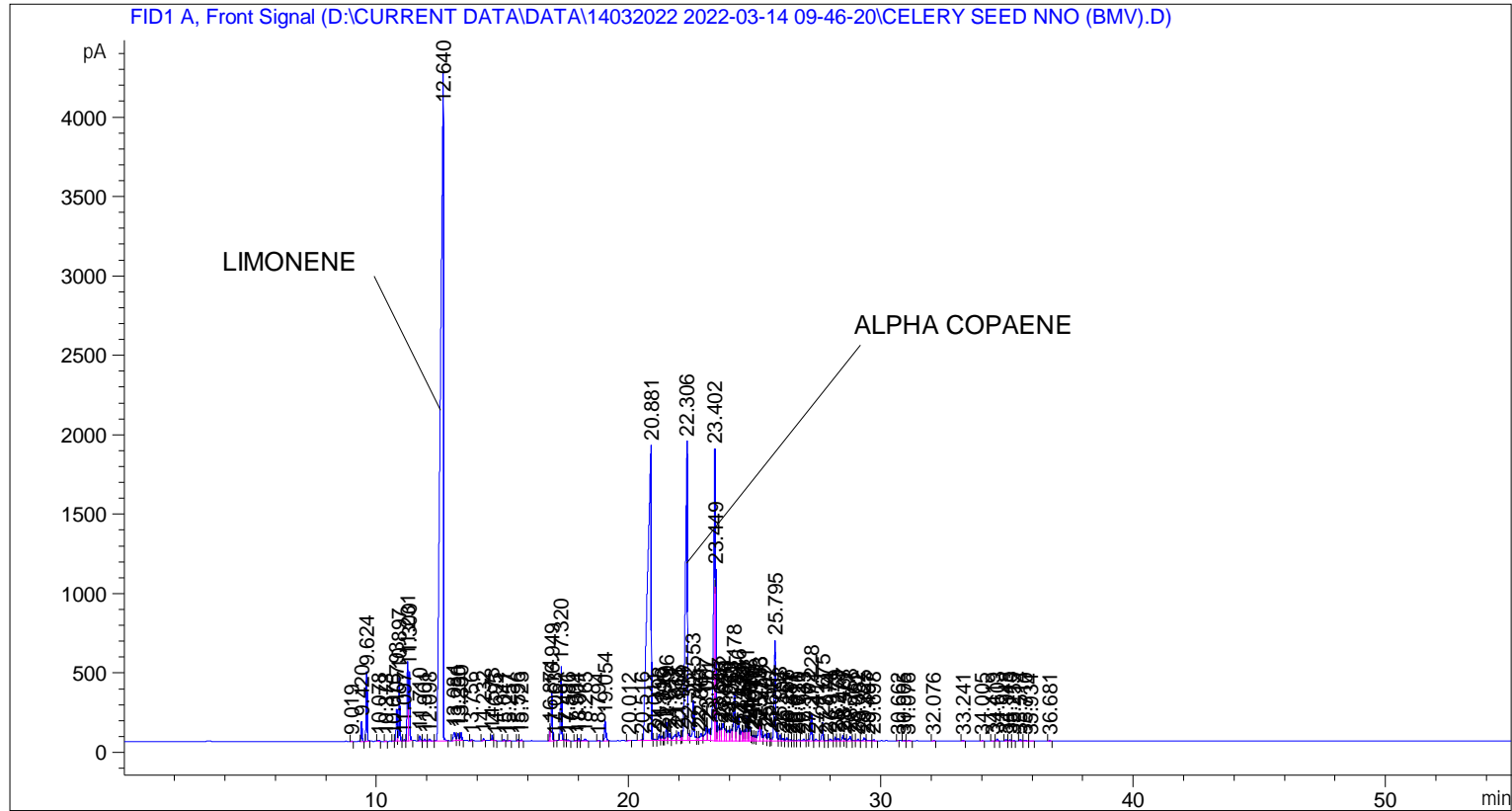


```
=====
Acq. Operator   : SYSTEM                               Seq. Line :    5
Acq. Instrument : BMV_NEW_GC_7820                     Location  : Vial 105
Injection Date  : 14-Mar-22 2:22:08 PM                 Inj       :    1
                                                    Inj Volume: 0.5 µl

Acq. Method     : D:\CURRENT DATA\DATA\14032022 2022-03-14 09-46-20\UNIVERSAL BMV.M
Last changed    : 14-Mar-22 9:46:31 AM by SYSTEM
Analysis Method : C:\CHEM32\2\METHODS\COOLING.M
Last changed    : 05-Nov-20 11:10:00 AM by SYSTEM
=====
```



=====
 Area Percent Report
 =====

```
Sorted By      : Signal
Multiplier     : 1.0000
Dilution       : 1.0000
Do not use Multiplier & Dilution Factor with ISTDs
```

Signal 1: FID1 A, Front Signal

Peak #	RetTime [min]	Type	Width [min]	Area [pA*s]	Height [pA]	Area %
1	9.019	BB	0.0398	5.35787	2.09917	0.00525
2	9.420	BB	0.0448	349.20370	124.04462	0.34241
3	9.624	BB	0.0456	1265.39514	439.96219	1.24077
4	10.078	BB	0.0517	22.65784	6.83357	0.02222
5	10.373	BB	0.0433	6.94398	2.43602	0.00681
6	10.675	BV	0.0416	7.47795	2.76507	0.00733
7	10.793	VV	0.0463	586.37695	199.63351	0.57497
8	10.897	VB	0.0467	1221.15869	410.84232	1.19740
9	11.097	BV	0.0481	22.05890	7.32275	0.02163

Sample Name: CELERY SEED NNO (BMV)

Peak #	RetTime [min]	Type	Width [min]	Area [pA*s]	Height [pA]	Area %
10	11.231	VV	0.0507	1531.41675	499.85626	1.50162
11	11.300	VB	0.0451	1313.51501	436.01740	1.28796
12	11.710	BB	0.0590	120.79890	32.06524	0.11845
13	11.901	BV	0.0546	49.06615	14.11403	0.04811
14	12.098	VB	0.0651	54.21926	13.73415	0.05316
15	12.640	BB	0.0981	3.33426e4	4221.34668	32.69382
16	13.084	BV	0.0779	296.77826	51.76943	0.29100
17	13.230	VV	0.0728	207.26152	44.09836	0.20323
18	13.350	VB	0.0465	147.59920	47.14859	0.14473
19	13.756	BB	0.0469	22.29901	7.25065	0.02187
20	14.232	BB	0.0530	38.04946	11.38397	0.03731
21	14.578	BB	0.0441	98.74855	34.85733	0.09683
22	14.695	BB	0.0459	6.26805	2.22036	0.00615
23	15.041	BB	0.0467	18.71026	6.29572	0.01835
24	15.257	BB	0.0479	10.78354	3.40746	0.01057
25	15.596	BV	0.0418	21.68492	7.94334	0.02126
26	15.723	VB	0.0522	19.78349	5.46339	0.01940
27	16.874	BV	0.0392	210.55162	84.16620	0.20645
28	16.949	VV	0.0494	1026.40601	311.73196	1.00643
29	17.063	VB	0.0442	10.90782	3.83528	0.01070
30	17.320	BV	0.0512	1572.10583	467.77182	1.54152
31	17.491	VV	0.0610	20.47132	4.97351	0.02007
32	17.586	VB	0.0526	15.40495	4.53655	0.01511
33	17.904	BV	0.0590	13.80167	3.58156	0.01353
34	18.011	VB	0.0440	36.69348	12.97148	0.03598
35	18.265	BB	0.0717	62.28490	12.17225	0.06107
36	18.794	BB	0.0459	11.73974	4.04291	0.01151
37	19.054	BB	0.0556	487.15735	133.37071	0.47768
38	20.012	BB	0.0887	23.61463	3.63934	0.02316
39	20.516	BV	0.0922	30.34236	4.30658	0.02975
40	20.881	VV	0.1238	1.88555e4	1851.54138	18.48866
41	21.011	VV	0.0818	65.16218	11.04981	0.06389
42	21.193	VV	0.0688	174.84216	35.89188	0.17144
43	21.310	VV	0.0633	132.72241	30.17872	0.13014
44	21.395	VV	0.0449	45.41008	14.77514	0.04453
45	21.496	VV	0.0554	412.59641	113.41745	0.40457
46	21.611	VV	0.0741	249.04602	46.82487	0.24420
47	21.838	VV	0.0964	277.37595	37.45921	0.27198
48	21.965	VV	0.0899	340.82864	51.68429	0.33420
49	22.104	VV	0.0428	86.69732	28.22320	0.08501
50	22.306	VV	0.0719	1.03178e4	1883.28284	10.11702
51	22.362	VV	0.0574	195.80412	44.42363	0.19199
52	22.553	VV	0.0657	1154.88940	251.00905	1.13242
53	22.740	VV	0.0469	66.13200	19.35585	0.06485
54	22.861	VV	0.0874	303.66815	46.38915	0.29776
55	23.067	VV	0.0865	587.70490	93.27323	0.57627
56	23.171	VV	0.0727	394.84872	74.66363	0.38717
57	23.402	VV	0.0640	8335.19824	1835.14697	8.17302
58	23.449	VV	0.0308	2201.80176	1078.13098	2.15896
59	23.567	VV	0.0727	506.08749	94.20735	0.49624
60	23.645	VV	0.0516	278.42407	76.32984	0.27301
61	23.742	VV	0.0775	639.64777	110.57567	0.62720
62	23.826	VV	0.0621	331.97775	74.32385	0.32552
63	23.940	VV	0.0760	421.86823	67.41850	0.41366

Sample Name: CELERY SEED NNO (BMV)

Peak #	RetTime [min]	Type	Width [min]	Area [pA*s]	Height [pA]	Area %
64	24.063	VV	0.0741	417.69537	74.80038	0.40957
65	24.178	VV	0.0620	1285.64148	305.98914	1.26063
66	24.346	VV	0.0786	876.92999	151.41969	0.85987
67	24.471	VV	0.0585	264.60666	59.95662	0.25946
68	24.522	VV	0.0465	187.14447	59.87994	0.18350
69	24.589	VV	0.0524	262.49725	70.58601	0.25739
70	24.671	VV	0.0633	684.42542	158.62833	0.67111
71	24.761	VV	0.0340	139.94209	60.54787	0.13722
72	24.813	VV	0.0540	327.56610	88.83537	0.32119
73	24.871	VV	0.0390	88.13841	33.18445	0.08642
74	24.947	VV	0.0529	123.59603	34.43357	0.12119
75	25.010	VV	0.0492	104.36787	31.06912	0.10234
76	25.183	VV	0.0709	535.95081	101.00234	0.52552
77	25.216	VV	0.0527	377.05804	103.08868	0.36972
78	25.407	VV	0.0854	257.07007	40.32400	0.25207
79	25.542	VV	0.0666	212.37761	49.97492	0.20825
80	25.645	VV	0.0460	34.25360	10.78798	0.03359
81	25.795	VV	0.0564	2507.64624	630.74512	2.45885
82	25.993	VV	0.0521	128.52066	36.44776	0.12602
83	26.104	VV	0.0619	60.18967	14.66694	0.05902
84	26.256	VV	0.0660	78.84878	17.03879	0.07731
85	26.387	VV	0.0612	35.87663	8.50365	0.03518
86	26.511	VV	0.0671	24.20137	5.12062	0.02373
87	26.611	VV	0.0552	15.47217	4.27475	0.01517
88	26.720	VV	0.0894	39.87101	6.51117	0.03910
89	26.933	VV	0.0822	53.09522	8.94644	0.05206
90	27.102	VV	0.0530	29.92640	8.52522	0.02934
91	27.228	VV	0.0507	586.05896	172.35861	0.57466
92	27.411	VV	0.0735	63.29469	12.40959	0.06206
93	27.675	VV	0.0507	388.01599	116.85850	0.38047
94	27.814	VV	0.0778	20.56074	3.64824	0.02016
95	27.974	VV	0.0730	58.85241	11.07122	0.05771
96	28.179	VV	0.0496	72.90394	22.64821	0.07149
97	28.278	VV	0.0671	70.76746	14.98343	0.06939
98	28.487	VV	0.0549	138.00664	36.67543	0.13532
99	28.571	VV	0.0477	43.52670	13.82648	0.04268
100	28.768	VV	0.0730	146.41296	28.95524	0.14356
101	28.961	VV	0.0671	24.55551	4.93385	0.02408
102	29.082	VV	0.0712	59.87099	11.78911	0.05871
103	29.325	VV	0.0773	105.57156	19.15845	0.10352
104	29.497	VV	0.0755	26.20869	4.74017	0.02570
105	29.698	VB	0.0476	26.49109	8.43594	0.02598
106	30.662	BB	0.0354	4.43985	2.04040	0.00435
107	30.905	BB	0.0478	11.84513	3.76033	0.01161
108	31.076	BB	0.0648	21.00764	4.82818	0.02060
109	32.076	BB	0.0526	12.15592	3.58497	0.01192
110	33.241	BB	0.0565	14.51568	3.80234	0.01423
111	34.005	BB	0.0529	11.89243	3.38886	0.01166
112	34.419	BB	0.0548	10.73922	3.07168	0.01053
113	34.603	BB	0.0547	52.22459	14.61775	0.05121
114	34.948	BV	0.0541	39.20469	10.37887	0.03844
115	35.113	VV	0.0666	36.87418	8.03101	0.03616
116	35.255	VB	0.0491	14.75187	4.76400	0.01446
117	35.514	BB	0.0568	35.12412	9.58508	0.03444

Sample Name: CELERY SEED NNO (BMV)

Peak #	RetTime [min]	Type	Width [min]	Area [pA*s]	Height [pA]	Area %
118	35.710	BB	0.0647	24.08501	5.32975	0.02362
119	35.934	BB	0.0589	11.62224	3.02281	0.01140
120	36.681	BB	0.0548	16.11815	4.49777	0.01580

Totals : 1.01984e5 1.83981e4

=====
*** End of Report ***