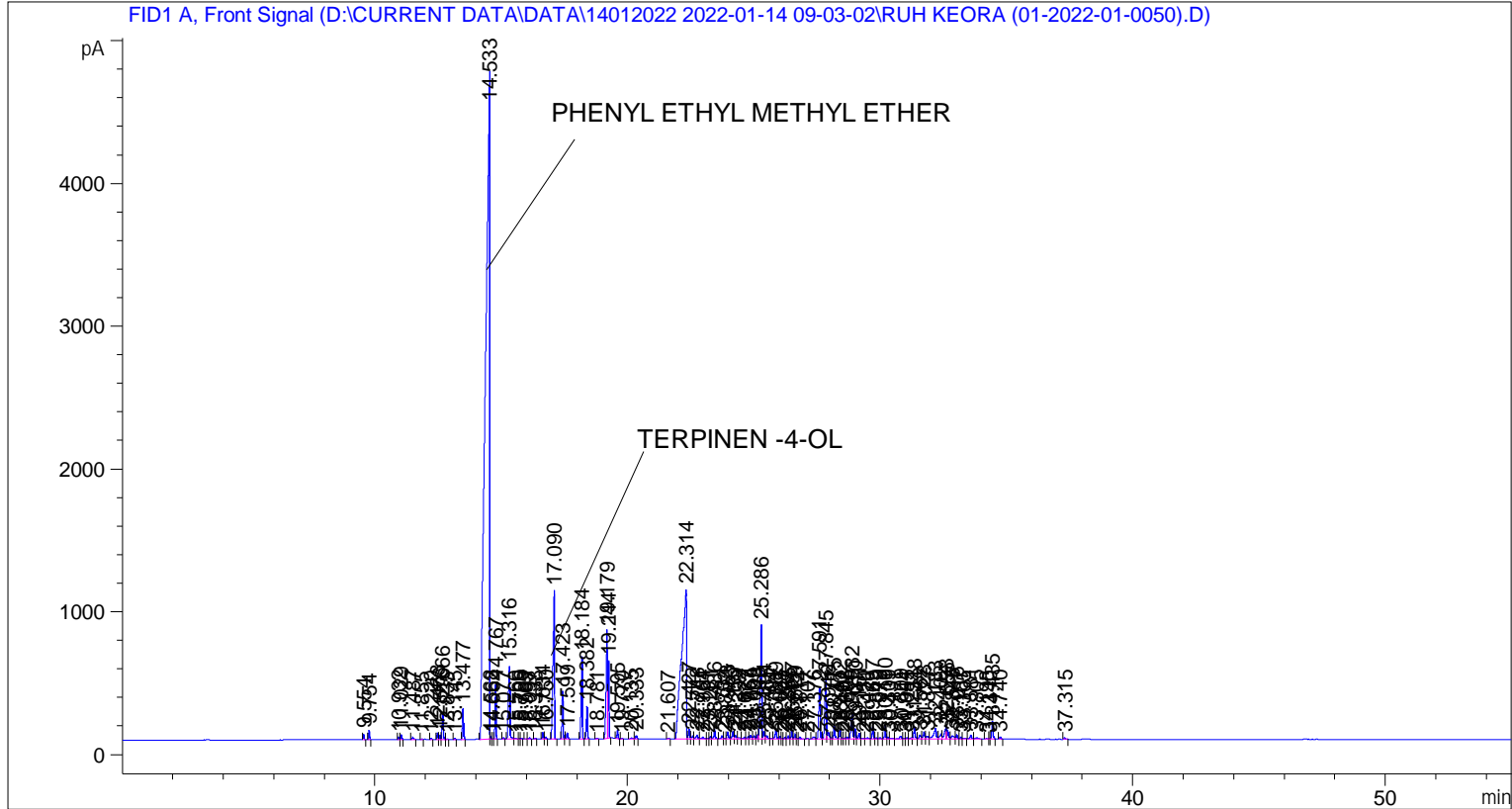


```

=====
Acq. Operator   : SYSTEM                               Seq. Line :    4
Acq. Instrument : BMV_NEW_GC_7820                     Location  : Vial 104
Injection Date  : 14-Jan-22 12:29:30 PM              Inj       :    1
                                                    Inj Volume: 0.5 µl

Acq. Method    : D:\CURRENT DATA\DATA\14012022 2022-01-14 09-03-02\UNIVERSAL BMV.M
Last changed   : 14-Jan-22 9:03:02 AM by SYSTEM
Analysis Method : C:\CHEM32\2\METHODS\COOLING.M
Last changed   : 02-Mar-22 3:24:07 PM by SYSTEM
                (modified after loading)

Additional Info : Peak(s) manually integrated
  
```



=====
 Area Percent Report
 =====

```

Sorted By      :      Signal
Multiplier     :      1.0000
Dilution       :      1.0000
Do not use Multiplier & Dilution Factor with ISTDs
  
```

Signal 1: FID1 A, Front Signal

Peak #	RetTime [min]	Type	Width [min]	Area [pA*s]	Height [pA]	Area %
1	9.554	BB	0.0420	108.46359	39.54168	0.10525
2	9.754	BB	0.0441	195.37048	68.93782	0.18957
3	10.932	BV	0.0446	51.00246	17.71797	0.04949
4	11.029	VB	0.0468	109.39431	36.68289	0.10615
5	11.487	BB	0.0581	60.03102	14.88114	0.05825
6	11.855	BV	0.0419	9.19003	3.46463	0.00892
7	12.220	BB	0.0462	19.56365	6.48813	0.01898

Peak #	RetTime [min]	Type	Width [min]	Area [pA*s]	Height [pA]	Area %
8	12.463	BV	0.0455	138.55072	48.19548	0.13444
9	12.576	VV	0.0445	85.29392	30.61297	0.08276
10	12.666	VB	0.0464	549.57050	181.35538	0.53326
11	12.835	BB	0.0513	9.84681	2.71363	0.00955
12	13.145	BB	0.0435	28.03615	10.07858	0.02720
13	13.477	BB	0.0469	643.81189	215.18304	0.62471
14	14.533	BV	0.1401	5.46658e4	4687.59180	53.04380
15	14.568	VV	0.0249	15.53664	9.09588	0.01508
16	14.662	VV	0.0465	11.82069	3.88848	0.01147
17	14.767	VB	0.0429	1044.63782	382.60910	1.01364
18	15.077	BB	0.0446	28.84028	10.01362	0.02798
19	15.316	BB	0.0623	2116.05151	511.16272	2.05327
20	15.560	BB	0.0759	36.07565	6.38948	0.03501
21	15.705	BV	0.0513	11.92549	3.54443	0.01157
22	15.789	VB	0.0440	20.76376	7.33023	0.02015
23	15.965	BB	0.0446	5.68392	1.91733	0.00552
24	16.097	BB	0.0559	28.44039	7.38544	0.02760
25	16.338	BB	0.0412	15.71439	6.07526	0.01525
26	16.634	BV	0.0474	136.24234	43.71955	0.13220
27	16.750	VB	0.0533	41.89846	12.44193	0.04066
28	17.090	BB	0.0589	4534.24414	1038.33997	4.39971
29	17.423	BB	0.0456	999.99982	337.44733	0.97033
30	17.599	BB	0.0480	136.26700	44.15627	0.13222
31	18.184	BB	0.0492	1837.04480	576.08557	1.78254
32	18.382	BB	0.0449	665.28113	228.72673	0.64554
33	18.781	BB	0.0504	17.77259	5.54892	0.01725
34	19.179	BV	0.0472	2617.74487	759.69641	2.54007
35	19.244	VB	0.0453	1597.21362	542.49854	1.54982
36	19.595	BB	0.0460	174.85863	58.20754	0.16967
37	19.770	BB	0.0440	9.80087	3.36213	0.00951
38	20.135	BB	0.0951	42.75113	6.30620	0.04148
39	20.333	BB	0.0501	69.96453	20.88987	0.06789
40	21.607	BB	0.0607	16.97102	4.23983	0.01647
41	22.314	BV	0.1605	1.39615e4	1047.39087	13.54725
42	22.427	VV	0.0539	246.70708	68.69510	0.23939
43	22.572	VV	0.0698	96.47717	20.52806	0.09361
44	22.748	VV	0.0762	150.60632	27.81463	0.14614
45	22.964	VV	0.0834	82.38107	13.65448	0.07994
46	23.181	VV	0.0561	14.69367	3.79763	0.01426
47	23.281	VV	0.0542	71.12985	20.63812	0.06902
48	23.436	VB	0.0569	261.89981	68.07951	0.25413
49	23.734	BV	0.0685	103.24590	21.31551	0.10018
50	23.852	VV	0.0602	24.45127	6.17372	0.02373
51	23.953	VV	0.0581	200.59630	50.72716	0.19464
52	24.167	VV	0.0591	213.35449	52.87636	0.20702
53	24.259	VV	0.0605	117.69182	28.30433	0.11420
54	24.392	VV	0.0796	58.71008	9.98976	0.05697
55	24.627	VV	0.0745	74.39685	14.33906	0.07219
56	24.767	VV	0.0657	78.84625	17.44902	0.07651
57	24.864	VV	0.0640	113.64768	25.01556	0.11028
58	25.009	VV	0.0701	104.66389	20.33373	0.10156
59	25.146	VV	0.0517	111.01941	32.59378	0.10773
60	25.286	VV	0.0562	3098.49878	799.31421	3.00656
61	25.394	VV	0.0563	212.54619	54.74633	0.20624

Peak #	RetTime [min]	Type	Width [min]	Area [pA*s]	Height [pA]	Area %
62	25.485	VV	0.0729	118.83777	21.03456	0.11531
63	25.704	VV	0.0703	28.21053	6.29386	0.02737
64	25.869	VV	0.0624	292.70633	67.79600	0.28402
65	26.027	VV	0.0454	56.79467	18.69190	0.05511
66	26.108	VV	0.0480	12.37031	3.80070	0.01200
67	26.222	VV	0.0634	50.72024	11.98727	0.04922
68	26.355	VV	0.0540	77.68078	21.08702	0.07538
69	26.497	VV	0.0476	204.30893	65.05859	0.19825
70	26.629	VV	0.0549	122.15462	33.21098	0.11853
71	26.712	VV	0.0423	13.59303	5.06452	0.01319
72	26.811	VB	0.0526	38.99459	11.77150	0.03784
73	27.107	BB	0.0468	15.95331	5.50816	0.01548
74	27.376	BV	0.0811	87.11627	15.15662	0.08453
75	27.591	VB	0.0562	1318.86377	364.93085	1.27973
76	27.845	BV	0.0611	1710.28381	423.79175	1.65954
77	27.946	VV	0.0744	233.07268	45.01023	0.22616
78	28.071	VV	0.0410	18.48970	6.34351	0.01794
79	28.175	VB	0.0561	351.44525	95.04299	0.34102
80	28.402	BV	0.0519	234.54492	70.27592	0.22759
81	28.492	VV	0.0501	21.10393	5.99104	0.02048
82	28.608	VV	0.0729	42.40241	8.25897	0.04114
83	28.695	VV	0.0555	51.12075	14.04867	0.04960
84	28.882	VV	0.0679	834.48535	177.39191	0.80973
85	29.010	VV	0.0472	229.50520	71.93836	0.22270
86	29.161	VV	0.0565	165.20290	41.41663	0.16030
87	29.350	VV	0.0787	29.04760	5.08283	0.02819
88	29.471	VV	0.1043	57.00300	7.13028	0.05531
89	29.697	VV	0.0560	309.46066	83.90012	0.30028
90	29.849	VV	0.0636	37.23206	8.41446	0.03613
91	29.979	VV	0.0554	34.01893	9.35588	0.03301
92	30.190	VV	0.0513	321.07288	95.24242	0.31155
93	30.309	VV	0.0553	44.06913	11.88422	0.04276
94	30.431	VV	0.0873	36.12508	5.67213	0.03505
95	30.809	VV	0.0777	106.33556	18.88012	0.10318
96	30.944	VV	0.0543	14.12980	3.71754	0.01371
97	31.055	VV	0.0598	32.99173	8.05401	0.03201
98	31.251	VV	0.0831	64.35749	10.12765	0.06245
99	31.348	VV	0.0555	309.05908	84.80085	0.29989
100	31.562	VV	0.0758	151.20094	28.07705	0.14671
101	31.728	VV	0.0692	226.98923	48.82331	0.22025
102	31.877	VV	0.0859	119.38051	18.85386	0.11584
103	32.183	VV	0.0943	536.62128	73.41693	0.52070
104	32.402	VV	0.0766	198.39410	36.39808	0.19251
105	32.598	VV	0.0757	498.58081	84.66439	0.48379
106	32.656	VV	0.0544	239.87230	62.99897	0.23275
107	32.845	VV	0.0975	161.56340	21.30509	0.15677
108	33.016	VV	0.0559	108.27043	28.79383	0.10506
109	33.187	VV	0.0585	51.63760	13.25253	0.05011
110	33.305	VB	0.0896	29.62330	4.34358	0.02874
111	33.581	BV	0.0662	114.56315	25.14003	0.11116
112	33.805	VB	0.0832	58.16641	9.40367	0.05644
113	34.198	BB	0.0686	16.19725	3.17253	0.01572
114	34.340	BV	0.0487	15.60156	4.83305	0.01514
115	34.435	VB	0.0504	410.83444	121.55965	0.39864

Peak #	RetTime [min]	Type	Width [min]	Area [pA*s]	Height [pA]	Area %
116	34.740	BB	0.0530	55.77219	15.86705	0.05412
117	37.315	BB	0.0561	35.17690	9.52371	0.03413

Totals : 1.03058e5 1.49719e4

=====
*** End of Report ***