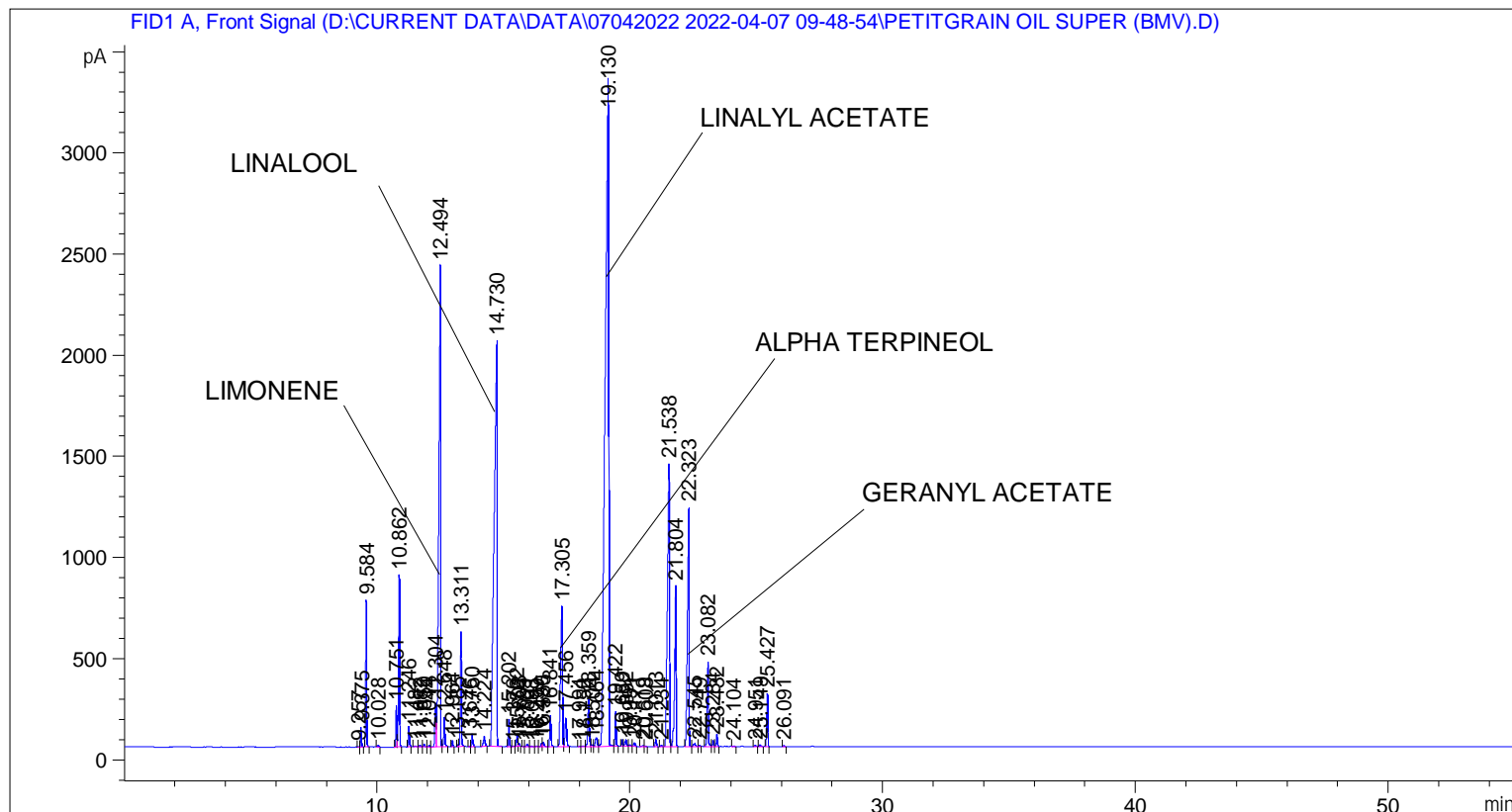


```

=====
Acq. Operator   : SYSTEM                               Seq. Line :    2
Acq. Instrument : BMV_NEW_GC_7820                     Location  : Vial 102
Injection Date  : 07-Apr-22 11:06:27 AM                Inj       :    1
                                                    Inj Volume: 0.5 µl

Acq. Method    : D:\CURRENT DATA\DATA\07042022 2022-04-07 09-48-54\UNIVERSAL BMV.M
Last changed   : 07-Apr-22 9:49:05 AM by SYSTEM
Analysis Method: C:\CHEM32\2\METHODS\COOLING.M
Last changed   : 08-Apr-22 10:31:09 AM by SYSTEM
                (modified after loading)
  
```



=====
 Area Percent Report
 =====

```

Sorted By      :      Signal
Multiplier     :      1.0000
Dilution       :      1.0000
Do not use Multiplier & Dilution Factor with ISTDs
  
```

Signal 1: FID1 A, Front Signal

Peak #	RetTime [min]	Type	Width [min]	Area [pA*s]	Height [pA]	Area %
1	9.257	BV	0.0405	5.21385	1.99748	0.00543
2	9.375	VB	0.0428	266.71017	97.75761	0.27770
3	9.584	BB	0.0431	2002.93335	728.37512	2.08546
4	10.028	BB	0.0485	29.03849	9.28351	0.03024
5	10.751	BV	0.0480	610.60345	203.64630	0.63576
6	10.862	VB	0.0445	2441.08984	850.35541	2.54167
7	11.246	BB	0.0443	289.60446	101.41040	0.30154
8	11.482	BB	0.0586	22.04906	5.40130	0.02296

Sample Name: PETITGRAIN OIL SUPER (BMV)

Peak #	RetTime [min]	Type	Width [min]	Area [pA*s]	Height [pA]	Area %
9	11.682	BV	0.0494	24.05556	7.49411	0.02505
10	11.850	VB	0.0441	37.91299	13.34670	0.03948
11	12.044	BV	0.0469	22.01520	7.36960	0.02292
12	12.304	VV	0.0719	965.59253	216.93752	1.00538
13	12.494	VV	0.0640	1.16067e4	2374.95703	12.08498
14	12.648	VB	0.0456	429.78564	145.01044	0.44749
15	12.964	BB	0.0416	82.60526	30.48444	0.08601
16	13.185	BV	0.0347	18.81971	8.22605	0.01960
17	13.311	VB	0.0443	1622.27881	568.17322	1.68912
18	13.646	BV	0.0417	5.07879	1.99782	0.00529
19	13.750	VB	0.0504	207.21696	62.94024	0.21576
20	14.224	BB	0.0645	212.62793	47.22861	0.22139
21	14.730	BB	0.1014	1.62358e4	2005.68579	16.90481
22	15.202	BB	0.0415	360.43967	133.58498	0.37529
23	15.376	BB	0.0502	9.40250	2.72571	0.00979
24	15.522	BV	0.0475	165.74083	54.48189	0.17257
25	15.603	VB	0.0455	38.86452	13.13743	0.04047
26	15.789	BV	0.0363	3.39093	1.63033	0.00353
27	15.921	VV	0.0619	48.83210	12.40363	0.05084
28	16.093	VB	0.0476	11.43122	3.74530	0.01190
29	16.299	BV	0.0510	11.42287	3.41292	0.01189
30	16.490	VV	0.0496	52.70960	16.33676	0.05488
31	16.555	VB	0.0631	84.63565	20.09295	0.08812
32	16.841	BB	0.0501	508.93558	155.66690	0.52991
33	17.305	BV	0.0771	3816.70435	694.25305	3.97397
34	17.456	VB	0.0722	642.34637	138.18295	0.66881
35	17.994	BB	0.0459	5.90622	1.86778	0.00615
36	18.152	BV	0.0864	16.98840	2.70092	0.01769
37	18.359	VV	0.0565	912.98651	234.14983	0.95061
38	18.504	VV	0.0612	37.00562	8.95167	0.03853
39	18.664	VV	0.0759	231.75764	43.66194	0.24131
40	19.130	VV	0.1272	3.20356e4	3301.32080	33.35557
41	19.422	VB	0.0408	451.93784	171.14713	0.47056
42	19.689	BV	0.0408	84.84071	32.11529	0.08834
43	19.832	VV	0.0640	155.31670	32.95419	0.16172
44	19.991	VB	0.0602	37.60541	9.10645	0.03915
45	20.171	BB	0.0639	77.33322	18.43445	0.08052
46	20.519	BV	0.0777	26.35007	4.47787	0.02744
47	20.608	VB	0.0453	13.03496	4.56176	0.01357
48	21.013	BB	0.0508	119.36673	35.92252	0.12429
49	21.234	BB	0.0545	18.99510	5.47701	0.01978
50	21.538	BV	0.0761	7798.63135	1396.93457	8.11997
51	21.804	VB	0.0560	3063.04980	794.94427	3.18926
52	22.323	BB	0.0660	5365.40234	1181.93958	5.58648
53	22.545	BB	0.0787	75.28442	12.78590	0.07839
54	22.749	BB	0.0565	17.21951	4.51136	0.01793
55	23.082	BV	0.0483	1438.44470	416.73642	1.49772
56	23.284	VV	0.0489	99.08097	31.32933	0.10316
57	23.432	VB	0.0473	190.95222	63.03663	0.19882
58	24.104	BB	0.0518	10.97653	3.57686	0.01143
59	24.951	BB	0.0676	28.19054	6.25257	0.02935
60	25.149	BB	0.0596	27.55071	7.05174	0.02869
61	25.427	BB	0.0464	792.50171	261.52438	0.82516
62	26.091	BB	0.0491	17.70196	5.56952	0.01843

Peak #	RetTime [min]	Type	Width [min]	Area [pA*s]	Height [pA]	Area %
----- ----- ----- ----- ----- ----- -----						
Totals :				9.60426e4	1.68308e4	

=====
*** End of Report ***