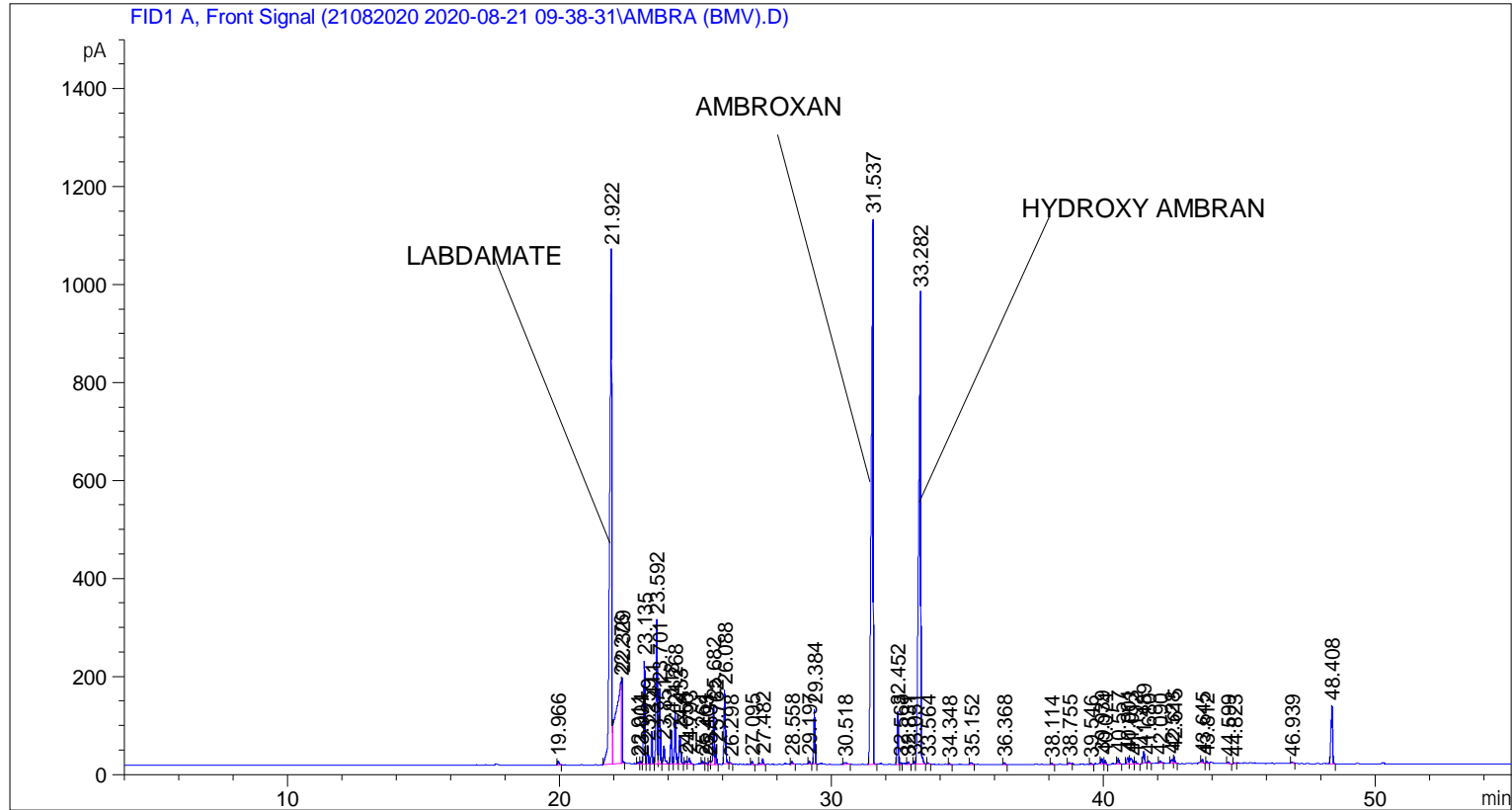


```

=====
Acq. Operator   : SYSTEM                               Seq. Line :    3
Acq. Instrument : BMV_NEW_GC_7820                     Location  : Vial 103
Injection Date  : 21-Aug-20 12:04:37 PM                Inj       :    1
                                                    Inj Volume: 0.5 µl

Acq. Method    : C:\CHEM32\2\DATA\21082020 2020-08-21 09-38-31\UNIVERSAL BMV.M
Last changed   : 21-Aug-20 9:38:42 AM by SYSTEM
Analysis Method: C:\CHEM32\2\DATA\21082020 2020-08-21 09-38-31\UNIVERSAL BMV.M (Sequence
Method)
Last changed   : 22-Aug-20 10:10:33 AM by SYSTEM
                (modified after loading)
Additional Info : Peak(s) manually integrated
  
```



=====
 Area Percent Report
 =====

```

Sorted By      :      Signal
Multiplier     :      1.0000
Dilution       :      1.0000
Do not use Multiplier & Dilution Factor with ISTDs
  
```

Signal 1: FID1 A, Front Signal

Peak #	RetTime [min]	Type	Width [min]	Area [pA*s]	Height [pA]	Area %
1	19.966	BB	0.0584	31.89394	8.02770	0.12777
2	21.922	BV	0.0665	5257.11914	1048.25452	21.06102
3	22.276	VV	0.1690	2334.75586	166.11996	9.35347
4	22.329	VB	0.0388	490.38071	174.29106	1.96456
5	22.911	BV	0.0472	12.00704	3.86697	0.04810
6	23.004	VV	0.0534	18.29706	5.03511	0.07330

Sample Name: AMBRA (BMV)

Peak #	RetTime [min]	Type	Width [min]	Area [pA*s]	Height [pA]	Area %
7	23.135	VV	0.0464	620.43945	210.55373	2.48560
8	23.259	VV	0.0485	105.99548	34.83126	0.42464
9	23.411	VV	0.0471	204.49287	67.91173	0.81924
10	23.592	VV	0.0476	900.31000	295.18890	3.60681
11	23.701	VV	0.0480	476.28491	154.21111	1.90809
12	23.851	VB	0.0590	154.39951	37.51124	0.61855
13	24.118	BV	0.0476	209.45872	68.55482	0.83913
14	24.268	VV	0.0514	352.43304	107.07810	1.41191
15	24.433	VB	0.0623	243.53310	56.51559	0.97564
16	24.656	BV	0.0608	26.99053	6.88164	0.10813
17	24.793	VB	0.0666	57.93114	12.37550	0.23208
18	25.264	BB	0.0499	21.66044	6.84828	0.08678
19	25.403	BV	0.0609	10.02907	2.72767	0.04018
20	25.531	VV	0.0467	21.07084	6.87673	0.08441
21	25.682	VV	0.0503	383.88211	120.18045	1.53790
22	25.762	VB	0.0455	99.70257	33.72412	0.39943
23	26.088	BB	0.0549	566.14679	150.51588	2.26809
24	26.298	BB	0.0364	4.24044	1.94819	0.01699
25	27.095	BB	0.0485	19.42659	6.21063	0.07783
26	27.482	BB	0.0602	47.54958	11.76403	0.19049
27	28.558	BB	0.0529	20.19026	5.61563	0.08089
28	29.197	BB	0.0506	24.21554	7.32276	0.09701
29	29.384	BB	0.0488	352.92740	111.78775	1.41389
30	30.518	BB	0.0891	30.40835	4.12201	0.12182
31	31.537	BB	0.0653	5457.82617	1111.68896	21.86509
32	32.452	BV	0.0486	339.94846	108.43185	1.36190
33	32.568	VV	0.0501	14.25197	4.48015	0.05710
34	32.831	BB	0.0489	12.68091	4.23556	0.05080
35	33.051	BV	0.0476	18.22877	6.14676	0.07303
36	33.282	VB	0.0666	4914.13184	961.23279	19.68694
37	33.564	BB	0.0480	7.82315	2.53756	0.03134
38	34.348	BB	0.0438	5.52788	2.09492	0.02215
39	35.152	BB	0.0714	22.40908	4.39998	0.08978
40	36.368	BB	0.0499	13.49081	4.15766	0.05405
41	38.114	BB	0.0510	8.58339	2.56619	0.03439
42	38.755	BB	0.0509	10.53997	3.42677	0.04223
43	39.546	BB	0.0547	10.55059	2.69226	0.04227
44	39.939	BV	0.0525	38.59240	11.40788	0.15461
45	40.074	VB	0.0512	24.82028	7.77474	0.09943
46	40.557	BB	0.0536	42.26567	11.86157	0.16932
47	40.901	BV	0.0631	55.84526	13.27326	0.22373
48	41.013	VV	0.0846	72.36207	11.79869	0.28990
49	41.192	VB	0.0746	25.26360	5.02589	0.10121
50	41.489	BB	0.0547	89.45427	24.44959	0.35837
51	41.680	BB	0.0487	14.45931	4.46906	0.05793
52	42.090	BB	0.0578	21.30392	5.42921	0.08535
53	42.528	BV	0.0600	35.31605	8.08369	0.14148
54	42.615	VB	0.0541	50.54579	13.99494	0.20250
55	43.645	BB	0.0560	29.82569	7.90080	0.11949
56	43.812	BB	0.0462	9.80509	3.34840	0.03928
57	44.599	BB	0.0558	11.55900	3.38656	0.04631
58	44.823	BB	0.0378	4.54430	2.13586	0.01821
59	46.939	BB	0.0617	12.86358	3.08149	0.05153
60	48.408	BB	0.0644	488.38275	117.74649	1.95655

Sample Name: AMBRA (BMV)

Peak #	RetTime [min]	Type	Width [min]	Area [pA*s]	Height [pA]	Area %
----- ----- ----- ----- ----- ----- -----						
Totals :				2.49614e4	5400.11258	

=====

*** End of Report ***