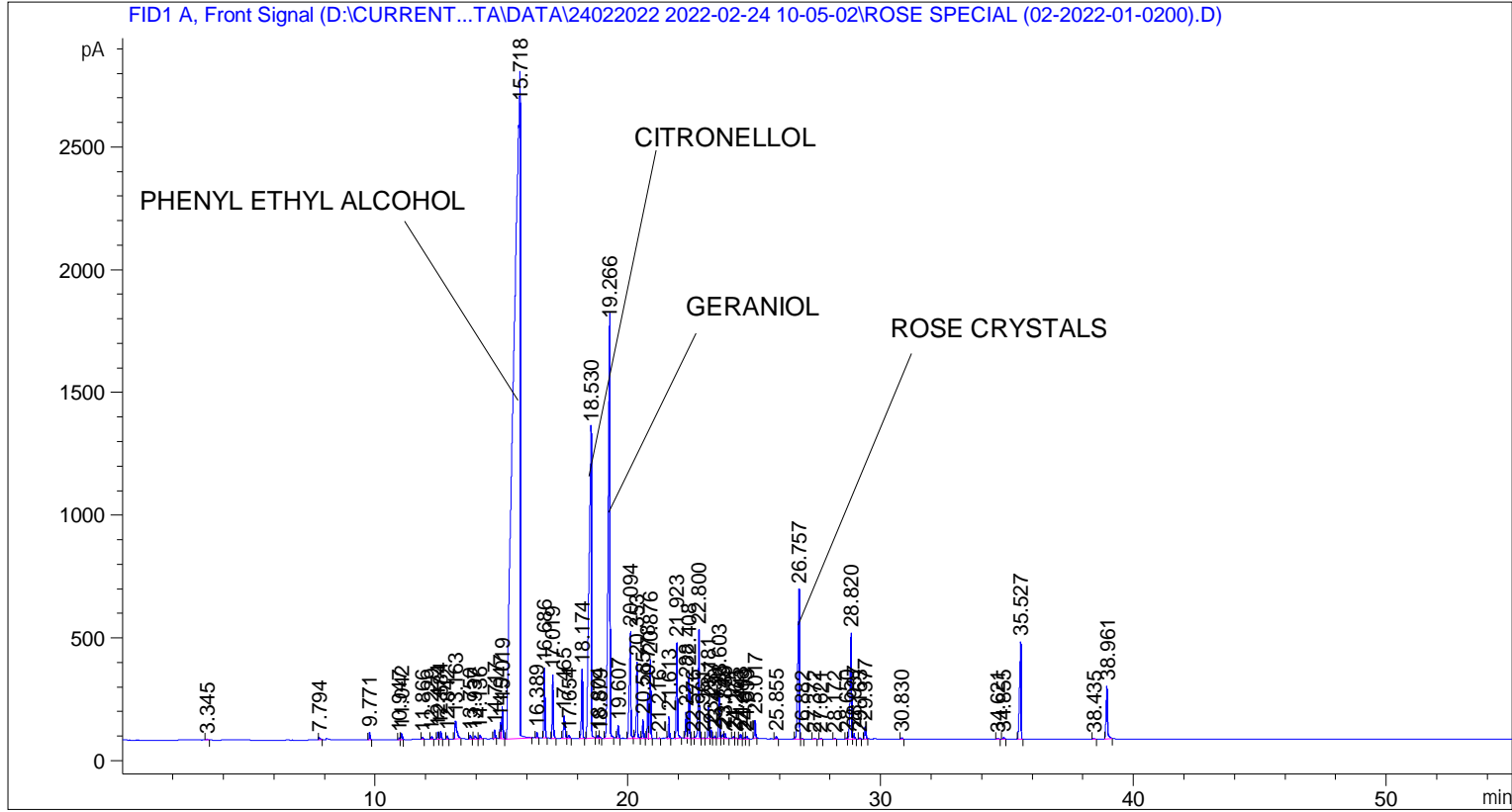


```

=====
Acq. Operator   : SYSTEM                               Seq. Line :    5
Acq. Instrument : BMV_NEW_GC_7820                     Location  : Vial 105
Injection Date  : 24-Feb-22 2:39:46 PM                 Inj       :    1
                                                    Inj Volume: 0.5 µl

Acq. Method    : D:\CURRENT DATA\DATA\24022022 2022-02-24 10-05-02\UNIVERSAL BMV.M
Last changed   : 24-Feb-22 10:05:13 AM by SYSTEM
Analysis Method: C:\CHEM32\2\METHODS\COOLING.M
Last changed   : 28-Mar-22 10:54:34 AM by SYSTEM
                (modified after loading)
  
```



=====  
 Area Percent Report  
 =====

```

Sorted By      :      Signal
Multiplier     :      1.0000
Dilution      :      1.0000
Do not use Multiplier & Dilution Factor with ISTDs
  
```

Signal 1: FID1 A, Front Signal

Peak #	RetTime [min]	Type	Width [min]	Area [pA*s]	Height [pA]	Area %
1	3.345	BB	0.0543	11.93104	3.45683	0.01372
2	7.794	BB	0.0537	44.93638	11.46944	0.05166
3	9.771	BB	0.0437	84.29472	30.10404	0.09692
4	10.947	BV	0.0420	22.16666	8.08052	0.02549
5	11.042	VB	0.0468	70.87262	23.76448	0.08148
6	11.866	BB	0.0433	25.26370	9.12629	0.02905
7	12.229	BB	0.0439	29.97248	10.94520	0.03446
8	12.474	BV	0.0435	80.92435	29.04642	0.09304

Peak #	RetTime [min]	Type	Width [min]	Area [pA*s]	Height [pA]	Area %
9	12.584	VB	0.0454	98.62772	33.48758	0.11340
10	12.842	BB	0.0461	41.12086	14.06552	0.04728
11	13.163	BB	0.0765	405.00125	75.64611	0.46564
12	13.750	BB	0.0530	53.64693	15.25340	0.06168
13	13.937	BB	0.0580	51.69639	13.10643	0.05944
14	14.136	BB	0.0499	56.76083	17.01654	0.06526
15	14.717	BB	0.0497	116.24928	36.95134	0.13366
16	14.947	BV	0.0416	175.09430	66.80987	0.20131
17	15.019	VB	0.0461	399.30887	132.57732	0.45910
18	15.718	BB	0.2123	4.77580e4	2701.36646	54.90878
19	16.389	BB	0.0453	65.07220	22.77282	0.07482
20	16.686	BB	0.0495	897.24725	286.89758	1.03159
21	17.019	BB	0.0472	783.58569	259.40985	0.90091
22	17.465	BV	0.0617	375.98416	92.00206	0.43228
23	17.654	VB	0.0576	45.64796	12.50569	0.05248
24	18.174	BB	0.0490	897.37170	282.61292	1.03174
25	18.530	BB	0.0819	7902.60986	1264.85852	9.08587
26	18.804	BV	0.0508	36.73401	11.33853	0.04223
27	18.879	VB	0.0415	15.68369	5.62541	0.01803
28	19.266	BB	0.0798	8637.50586	1686.08301	9.93081
29	19.607	BB	0.0508	164.26234	52.03229	0.18886
30	20.094	BB	0.0672	1911.97095	435.50189	2.19825
31	20.353	BB	0.0490	989.08429	311.78302	1.13718
32	20.585	BB	0.0468	229.54030	76.92465	0.26391
33	20.778	BV	0.0449	524.27063	185.91566	0.60277
34	20.876	VB	0.0481	971.30518	322.44992	1.11674
35	21.216	BB	0.0449	6.19438	2.19686	0.00712
36	21.613	BB	0.0456	256.48407	89.11127	0.29489
37	21.923	BB	0.0485	1210.36401	387.10214	1.39159
38	22.288	BV	0.0473	322.13849	106.40881	0.37037
39	22.408	VB	0.0486	833.09326	273.36746	0.95783
40	22.576	BV	0.0701	15.74066	3.59236	0.01810
41	22.800	VB	0.0548	1539.53528	440.64066	1.77005
42	22.961	BV	0.0748	22.16566	4.05617	0.02548
43	23.181	VV	0.0490	422.47971	136.86586	0.48574
44	23.287	VV	0.0458	107.19920	35.96607	0.12325
45	23.430	VV	0.0582	48.67355	12.02369	0.05596
46	23.603	VV	0.0475	564.01880	190.66074	0.64847
47	23.748	VV	0.0603	77.63545	18.76813	0.08926
48	23.839	VB	0.0548	78.85882	21.47971	0.09067
49	24.171	BV	0.0472	28.35004	9.12588	0.03259
50	24.265	VB	0.0508	10.69377	3.21645	0.01229
51	24.443	BB	0.0479	57.20214	18.60091	0.06577
52	24.613	BV	0.0503	24.07334	7.52024	0.02768
53	24.699	VB	0.0527	33.43618	9.58379	0.03844
54	25.017	BB	0.0482	233.85118	75.35684	0.26887
55	25.855	BB	0.0543	31.60421	8.92218	0.03634
56	26.757	BV	0.0612	2526.08569	611.09680	2.90432
57	26.882	VB	0.0478	8.88877	2.98348	0.01022
58	27.372	BB	0.0639	14.42301	3.58556	0.01658
59	27.621	BB	0.0509	7.76568	2.39345	0.00893
60	28.172	BB	0.0517	12.67187	3.72139	0.01457
61	28.650	BV	0.0439	19.11246	6.57011	0.02197
62	28.820	VV	0.0590	1664.12305	431.90851	1.91329

Sample Name: ROSE SPECIAL (02-2022-01-0200)

Peak #	RetTime [min]	Type	Width [min]	Area [pA*s]	Height [pA]	Area %
63	28.937	VB	0.0504	75.67369	22.98146	0.08700
64	29.163	BB	0.0462	11.38687	4.00446	0.01309
65	29.377	BB	0.0547	187.69695	51.28987	0.21580
66	30.830	BB	0.0554	23.65928	6.67233	0.02720
67	34.621	BB	0.0706	19.82765	4.15718	0.02280
68	34.855	BB	0.0599	26.97178	6.85586	0.03101
69	35.527	BB	0.0592	1638.64880	396.56238	1.88400
70	38.435	BB	0.0729	16.57663	3.39632	0.01906
71	38.961	BB	0.0578	825.88757	215.08405	0.94955

Totals :                           8.69769e4  1.21688e4

=====  
 \*\*\* End of Report \*\*\*