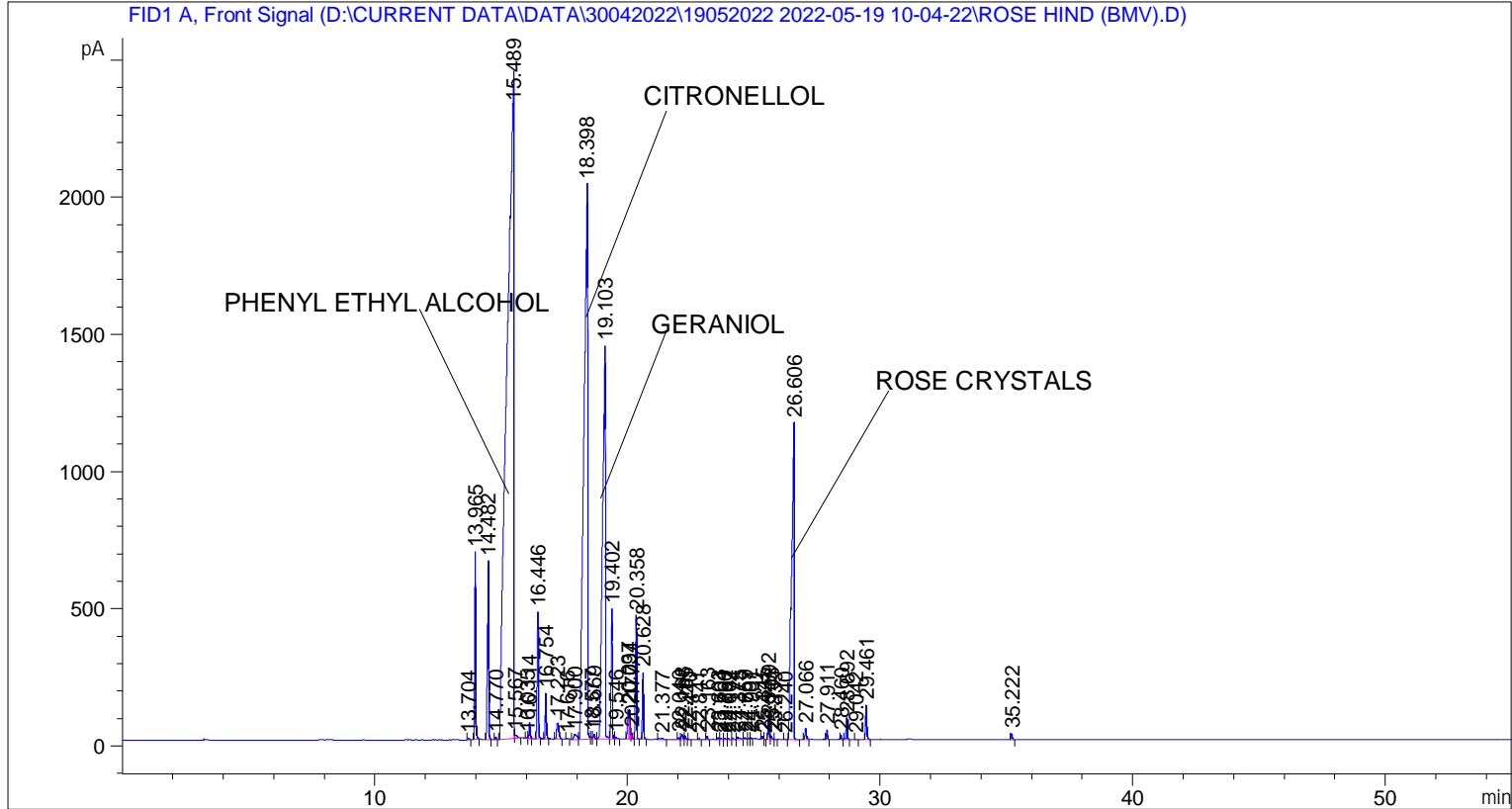


```

=====
Acq. Operator   : SYSTEM                               Seq. Line :    3
Acq. Instrument : BMV_NEW_GC_7820                     Location  : Vial 103
Injection Date  : 19-May-22 12:29:28 PM                Inj       :    1
                                                    Inj Volume: 0.5 µl

Acq. Method    : D:\CURRENT DATA\DATA\30042022\19052022 2022-05-19 10-04-22\UNIVERSAL BMV.M
Last changed   : 19-May-22 10:04:22 AM by SYSTEM
Analysis Method: C:\CHEM32\2\METHODS\COOLING.M
Last changed   : 23-May-22 2:23:46 PM by SYSTEM
                (modified after loading)

Additional Info : Peak(s) manually integrated
    
```



=====  
Area Percent Report  
=====

```

Sorted By      :      Signal
Multiplier     :      1.0000
Dilution       :      1.0000
Do not use Multiplier & Dilution Factor with ISTDs
    
```

Signal 1: FID1 A, Front Signal

Peak #	RetTime [min]	Type	Width [min]	Area [pA*s]	Height [pA]	Area %
1	13.704	BB	0.0549	20.25268	5.51038	0.02059
2	13.965	BB	0.0464	2070.68896	683.13153	2.10481
3	14.482	BB	0.0543	2361.06885	651.96228	2.39998
4	14.770	BB	0.0449	31.51513	10.84811	0.03203
5	15.489	BV	0.2243	4.52326e4	2417.80225	45.97807
6	15.567	VB	0.0849	81.63482	11.76636	0.08298
7	16.035	BV	0.0470	14.61808	5.02133	0.01486

Peak #	RetTime [min]	Type	Width [min]	Area [pA*s]	Height [pA]	Area %
8	16.114	VB	0.0477	180.48950	58.99600	0.18346
9	16.446	BB	0.0554	1596.21045	460.57028	1.62252
10	16.754	BB	0.0471	494.42526	164.54181	0.50257
11	17.223	BB	0.1023	378.13733	59.39186	0.38437
12	17.616	BB	0.0491	6.61909	2.07915	0.00673
13	17.900	BV	0.1221	160.89116	17.85211	0.16354
14	18.398	VV	0.1241	2.01161e4	2021.33020	20.44766
15	18.577	VV	0.0608	41.64043	9.74926	0.04233
16	18.669	VV	0.0526	65.81822	18.44767	0.06690
17	19.103	VV	0.0964	1.07356e4	1432.81909	10.91253
18	19.402	VB	0.0487	1536.23242	475.71194	1.56155
19	19.546	BB	0.0598	26.49134	6.33973	0.02693
20	20.037	BV	0.0513	348.28830	106.12302	0.35403
21	20.094	VV	0.0482	339.38583	106.39368	0.34498
22	20.177	VV	0.0496	77.16992	23.35340	0.07844
23	20.358	VB	0.0463	1442.74792	450.78247	1.46652
24	20.628	BB	0.0484	738.65497	243.27115	0.75083
25	21.377	BB	0.0991	39.41463	5.16361	0.04006
26	22.040	BV	0.0495	21.98926	6.83844	0.02235
27	22.168	VV	0.0548	62.85036	17.53078	0.06389
28	22.285	VB	0.0499	46.39381	14.28300	0.04716
29	22.440	BB	0.0400	4.57662	1.90750	0.00465
30	22.841	BB	0.0499	11.65051	3.67875	0.01184
31	23.163	BB	0.0516	46.13939	13.93779	0.04690
32	23.603	BV	0.0530	22.89097	6.67220	0.02327
33	23.704	VB	0.0599	15.97383	3.88906	0.01624
34	23.860	BV	0.0518	16.56354	4.73361	0.01684
35	24.002	VB	0.0504	11.32062	3.26962	0.01151
36	24.174	BB	0.0593	11.58300	2.98079	0.01177
37	24.375	BV	0.0867	59.24944	9.13039	0.06023
38	24.659	VV	0.0671	24.66723	5.12945	0.02507
39	24.797	VV	0.0518	7.81556	2.35079	0.00794
40	24.901	VV	0.0485	15.33836	4.89942	0.01559
41	25.345	BV	0.0498	39.95294	12.00236	0.04061
42	25.421	VB	0.0406	7.54561	2.78669	0.00767
43	25.592	BV	0.0501	231.32916	68.99447	0.23514
44	25.703	VB	0.0492	41.77894	12.77542	0.04247
45	25.839	BB	0.0367	3.91224	1.92949	0.00398
46	26.240	BB	0.0490	9.39237	3.04775	0.00955
47	26.606	BB	0.0942	8432.67969	1154.26599	8.57165
48	27.066	BB	0.0547	157.63744	41.15604	0.16024
49	27.911	BB	0.0482	103.21994	33.25906	0.10492
50	28.460	BB	0.0457	46.90392	15.75959	0.04768
51	28.692	BB	0.0490	258.62158	79.30393	0.26288
52	29.042	BB	0.0475	5.82510	1.97068	0.00592
53	29.461	BB	0.0525	437.99667	126.24730	0.44521
54	35.222	BB	0.0601	86.13455	22.30307	0.08755

Totals : 9.83787e4 1.11260e4

\*\*\* End of Report \*\*\*