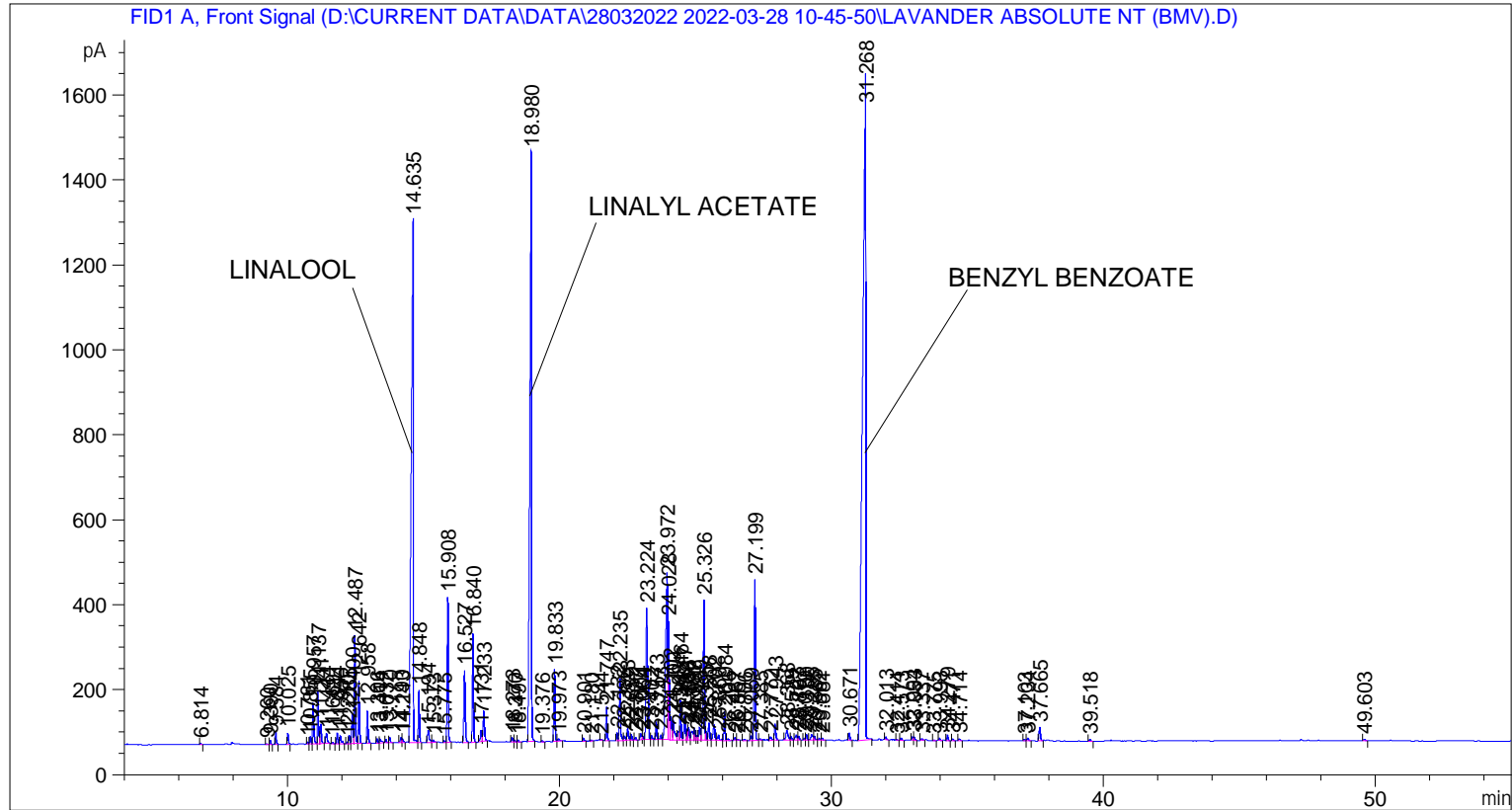


```

=====
Acq. Operator   : SYSTEM                               Seq. Line :    6
Acq. Instrument : BMV_NEW_GC_7820                     Location  : Vial 106
Injection Date  : 28-Mar-22 4:30:20 PM                Inj       :    1
                                                    Inj Volume: 0.5 µl

Acq. Method     : D:\CURRENT DATA\DATA\28032022 2022-03-28 10-45-50\UNIVERSAL BMV.M
Last changed    : 28-Mar-22 10:46:01 AM by SYSTEM
Analysis Method : C:\CHEM32\2\METHODS\COOLING.M
Last changed    : 18-Apr-22 4:51:39 PM by SYSTEM
                (modified after loading)

Additional Info : Peak(s) manually integrated
  
```



=====
 Area Percent Report
 =====

```

Sorted By      :      Signal
Multiplier     :      1.0000
Dilution       :      1.0000
Do not use Multiplier & Dilution Factor with ISTDs
  
```

Signal 1: FID1 A, Front Signal

Peak #	RetTime [min]	Type	Width [min]	Area [pA*s]	Height [pA]	Area %
1	6.814	BB	0.0452	10.74028	3.55787	0.02500
2	9.260	BB	0.0406	4.19299	1.71157	0.00976
3	9.390	BB	0.0415	26.62239	9.86050	0.06198
4	9.584	BB	0.0433	84.96382	29.77022	0.19780
5	10.025	BB	0.0448	74.63774	25.78631	0.17376
6	10.761	BV	0.0409	13.96236	5.27154	0.03250
7	10.855	VV	0.0444	50.98035	17.81627	0.11868

Sample Name: LAVANDER ABSOLUTE NT (BMV)

Peak #	RetTime [min]	Type	Width [min]	Area [pA*s]	Height [pA]	Area %
8	10.957	VB	0.0474	294.51050	97.17465	0.68563
9	11.137	BV	0.0428	347.91232	123.77834	0.80995
10	11.241	VB	0.0470	145.69502	45.98178	0.33918
11	11.444	BB	0.0547	87.59917	23.40648	0.20393
12	11.669	BB	0.0461	10.64650	3.44061	0.02479
13	11.844	BV	0.0440	69.63355	24.59013	0.16211
14	11.956	VB	0.0536	68.28936	18.26233	0.15898
15	12.210	BV	0.0397	8.74317	3.43732	0.02035
16	12.285	VV	0.0432	51.33392	18.61551	0.11951
17	12.400	VV	0.0490	209.85214	68.06589	0.48854
18	12.487	VV	0.0449	738.71790	254.57759	1.71977
19	12.642	VB	0.0425	411.19522	147.67856	0.95728
20	12.958	BB	0.0458	226.07864	75.89599	0.52632
21	13.306	BV	0.0433	28.13191	9.84271	0.06549
22	13.414	VB	0.0547	39.83522	10.17720	0.09274
23	13.632	BB	0.0413	18.82393	7.24804	0.04382
24	13.770	BB	0.0471	40.18189	12.99959	0.09355
25	14.190	BV	0.0454	37.14071	12.23777	0.08647
26	14.243	VB	0.0501	27.75068	8.06970	0.06460
27	14.635	BV	0.0732	6455.84570	1230.27539	15.02948
28	14.848	VB	0.0425	330.23413	122.39614	0.76880
29	15.194	BB	0.0614	123.10867	28.51908	0.28660
30	15.373	BB	0.0578	19.60452	5.10514	0.04564
31	15.775	BV	0.0439	10.95280	3.87919	0.02550
32	15.908	VB	0.0446	986.68530	342.09387	2.29705
33	16.527	BB	0.0555	586.51489	169.05466	1.36543
34	16.840	BB	0.0447	738.55054	255.69913	1.71938
35	17.131	BV	0.0503	90.86314	26.97377	0.21153
36	17.233	VB	0.0537	261.91110	73.32652	0.60974
37	18.273	BV	0.0539	42.23658	11.76811	0.09833
38	18.370	VV	0.0468	13.90592	4.52592	0.03237
39	18.497	VB	0.0447	14.29384	5.09887	0.03328
40	18.980	BB	0.0631	6187.38184	1386.03137	14.40449
41	19.376	BB	0.0375	5.49596	2.33377	0.01279
42	19.833	BV	0.0451	494.70053	169.00810	1.15168
43	19.973	VB	0.0717	24.92442	4.79414	0.05803
44	20.901	BB	0.0467	22.41492	7.54401	0.05218
45	21.180	BB	0.0354	4.70600	2.15885	0.01096
46	21.544	BB	0.0409	7.10292	2.68029	0.01654
47	21.747	BB	0.0459	233.94838	78.27464	0.54464
48	22.132	BV	0.0450	53.07982	18.74973	0.12357
49	22.235	VV	0.0492	463.62390	145.41486	1.07934
50	22.386	VV	0.0621	48.77530	10.72429	0.11355
51	22.523	VV	0.0550	103.36545	28.03488	0.24064
52	22.659	VB	0.0462	42.18390	13.99800	0.09821
53	22.807	BB	0.0508	20.05622	6.02998	0.04669
54	23.004	BV	0.0464	42.78690	14.10439	0.09961
55	23.064	VV	0.0455	28.26719	9.28090	0.06581
56	23.224	VV	0.0623	1388.64355	309.87274	3.23282
57	23.402	VB	0.0430	24.67050	9.00657	0.05743
58	23.573	BV	0.0457	118.88515	41.14948	0.27677
59	23.743	VV	0.0543	41.17808	11.36735	0.09586
60	23.972	VV	0.0661	1826.38452	393.93085	4.25190
61	24.028	VV	0.0442	817.20825	278.41629	1.90250

Sample Name: LAVANDER ABSOLUTE NT (BMV)

Peak #	RetTime [min]	Type	Width [min]	Area [pA*s]	Height [pA]	Area %
62	24.102	VV	0.0514	192.97287	55.78279	0.44925
63	24.200	VV	0.0719	242.74658	46.49501	0.56512
64	24.388	VV	0.0462	64.61888	20.84396	0.15044
65	24.464	VV	0.0498	303.95004	93.87724	0.70761
66	24.617	VV	0.0503	198.12784	60.40898	0.46125
67	24.703	VV	0.0421	73.34376	25.88304	0.17075
68	24.756	VV	0.0496	100.53059	29.63034	0.23404
69	24.881	VV	0.0766	112.96286	21.05823	0.26298
70	24.987	VV	0.0550	98.00726	27.20563	0.22817
71	25.071	VV	0.0555	36.86381	9.87812	0.08582
72	25.159	VV	0.0567	112.88931	29.44230	0.26281
73	25.326	VV	0.0521	1130.87463	328.92130	2.63272
74	25.395	VV	0.0386	53.33463	20.99447	0.12417
75	25.508	VV	0.0536	143.27936	41.16731	0.33356
76	25.702	VV	0.0707	166.63293	36.21678	0.38793
77	25.860	VV	0.0612	55.59325	13.18308	0.12942
78	26.084	VV	0.0492	209.31769	67.41736	0.48730
79	26.206	VB	0.0559	14.24298	3.78142	0.03316
80	26.467	BV	0.0472	19.25725	6.37708	0.04483
81	26.567	VB	0.0459	8.69387	2.99281	0.02024
82	26.806	BB	0.0581	9.24131	2.55906	0.02151
83	27.059	BV	0.0524	35.50577	10.78460	0.08266
84	27.199	VB	0.0519	1227.93542	377.61566	2.85869
85	27.385	BV	0.0604	16.14599	3.89089	0.03759
86	27.772	BV	0.0664	42.25772	8.74842	0.09838
87	27.943	VB	0.0563	143.62576	38.70428	0.33437
88	28.368	BV	0.0751	121.83989	22.17123	0.28365
89	28.529	VB	0.0530	27.23961	7.94549	0.06341
90	28.723	BV	0.0678	56.94782	11.29140	0.13258
91	28.807	VB	0.0527	30.62835	8.99379	0.07130
92	29.019	BV	0.0440	11.65517	4.00388	0.02713
93	29.100	VV	0.0492	39.33542	13.03578	0.09157
94	29.285	VV	0.0692	63.02266	12.84925	0.14672
95	29.385	VB	0.0562	36.46271	9.41958	0.08489
96	29.562	BV	0.0628	18.78953	4.07408	0.04374
97	29.681	VB	0.0486	14.50443	4.49496	0.03377
98	30.671	BB	0.0492	55.68598	17.46618	0.12964
99	31.268	BB	0.0986	1.24700e4	1570.59717	29.03078
100	32.013	BB	0.0582	28.43138	7.50158	0.06619
101	32.414	BB	0.0444	6.53902	2.35761	0.01522
102	32.573	BB	0.0528	19.75146	5.78751	0.04598
103	32.994	BV	0.0481	25.18201	7.51980	0.05862
104	33.053	VB	0.0509	27.62025	7.88090	0.06430
105	33.337	BB	0.0516	12.06394	3.74278	0.02809
106	33.775	BB	0.0440	4.99078	1.93824	0.01162
107	33.993	BB	0.0428	11.09147	4.33634	0.02582
108	34.279	BB	0.0492	39.55552	12.74412	0.09209
109	34.471	BB	0.0519	13.60231	3.78785	0.03167
110	34.714	BB	0.0525	13.73434	3.60441	0.03197
111	37.103	BV	0.0511	11.48950	3.42848	0.02675
112	37.234	VB	0.0637	28.09237	6.34489	0.06540
113	37.665	BB	0.0562	118.69536	32.06346	0.27633
114	39.518	BB	0.0530	15.33937	4.35960	0.03571
115	49.603	BB	0.0711	16.59822	3.39191	0.03864

Sample Name: LAVANDER ABSOLUTE NT (BMV)

Peak #	RetTime [min]	Type	Width [min]	Area [pA*s]	Height [pA]	Area %
----- ----- ----- ----- ----- ----- -----						
Totals :				4.29545e4	9461.86818	

=====
*** End of Report ***