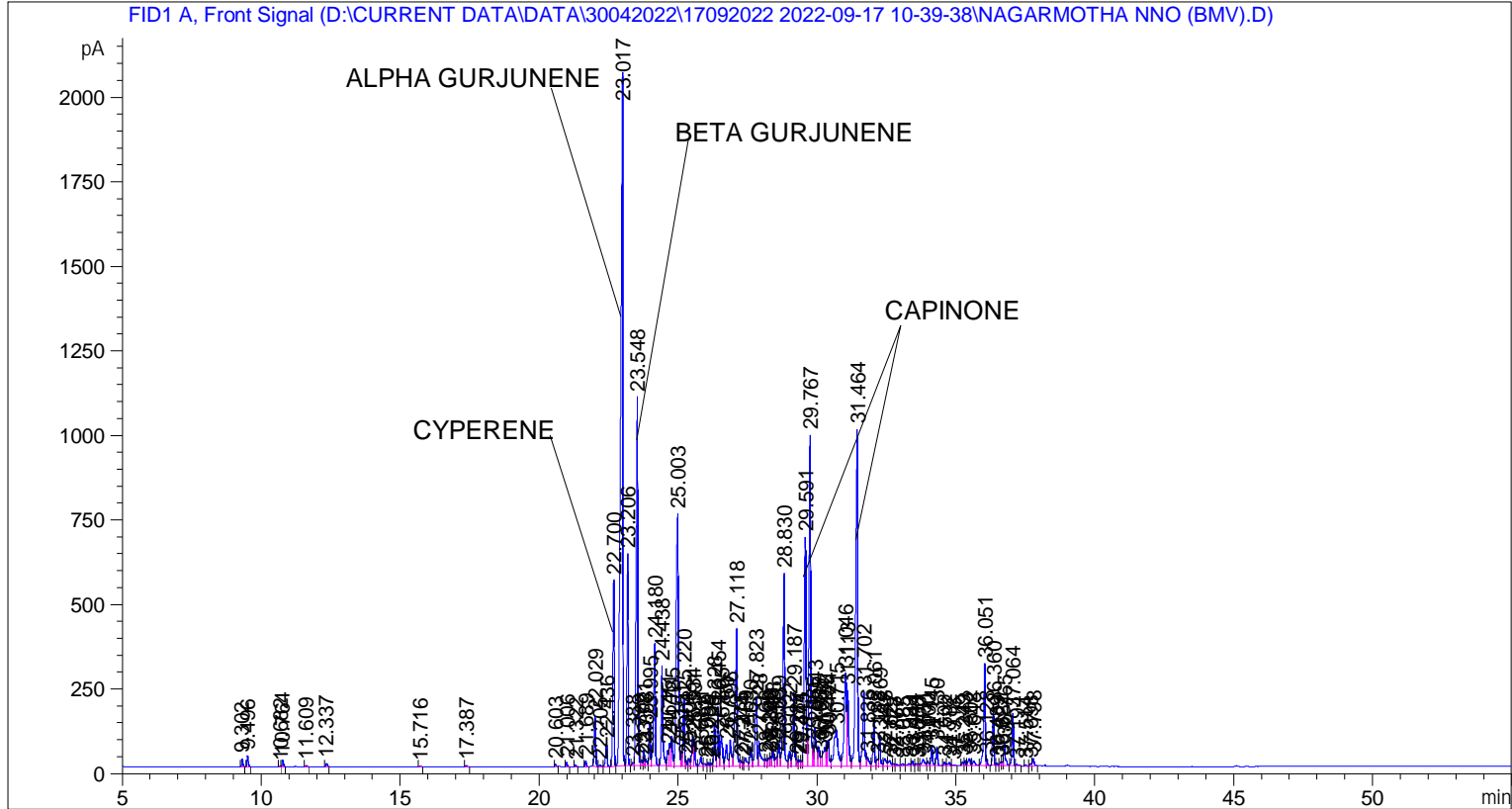


```
=====
Acq. Operator   : SYSTEM                               Seq. Line :    2
Acq. Instrument : BMV_NEW_GC_7820                     Location  : Vial 102
Injection Date  : 17-Sep-22 12:27:14 PM                Inj       :    1
                                                    Inj Volume: 0.5 µl

Acq. Method    : D:\CURRENT DATA\DATA\30042022\17092022 2022-09-17 10-39-38\UNIVERSAL BMV.M
Last changed   : 17-Sep-22 10:39:39 AM by SYSTEM
Analysis Method : C:\CHEM32\2\METHODS\COOLING.M
Last changed   : 23-Sep-22 2:28:03 PM by SYSTEM
                (modified after loading)

Additional Info : Peak(s) manually integrated
=====
```



=====
 Area Percent Report
 =====

```
Sorted By      :      Signal
Multiplier     :      1.0000
Dilution       :      1.0000
Do not use Multiplier & Dilution Factor with ISTDs
```

Signal 1: FID1 A, Front Signal

Peak #	RetTime [min]	Type	Width [min]	Area [pA*s]	Height [pA]	Area %
1	9.302	BB	0.0498	80.48637	24.84407	0.11755
2	9.496	BB	0.0489	107.88225	33.20750	0.15757
3	10.682	BV	0.0455	8.94120	3.11589	0.01306
4	10.764	VB	0.0500	72.21225	21.59705	0.10547
5	11.609	BB	0.0515	20.13384	5.94445	0.02941
6	12.337	BB	0.0585	42.05709	10.79142	0.06143
7	15.716	BB	0.0579	12.15553	3.15534	0.01775

Peak #	RetTime [min]	Type	Width [min]	Area [pA*s]	Height [pA]	Area %
8	17.387	BB	0.0656	19.87862	4.49164	0.02903
9	20.603	BB	0.0445	19.88171	7.14208	0.02904
10	21.006	BB	0.0474	41.22871	13.57537	0.06022
11	21.322	BB	0.0443	15.18685	5.32597	0.02218
12	21.689	BB	0.0533	57.18258	16.99666	0.08352
13	22.029	BB	0.0547	521.23395	149.23190	0.76128
14	22.205	BV	0.0605	25.47058	6.00672	0.03720
15	22.436	VB	0.0624	279.61853	68.81666	0.40839
16	22.700	BV	0.0521	1945.18457	551.97491	2.84100
17	23.017	VV	0.0735	1.11862e4	2054.46558	16.33782
18	23.206	VB	0.0454	1895.41638	625.27979	2.76831
19	23.388	BV	0.0503	32.74784	9.96278	0.04783
20	23.548	VV	0.0580	4676.55859	1090.36792	6.83024
21	23.702	VV	0.0484	54.65353	17.04550	0.07982
22	23.781	VV	0.0455	137.47377	46.50455	0.20078
23	23.853	VV	0.0594	86.78111	19.69065	0.12675
24	23.995	VV	0.0502	397.11926	124.67363	0.58000
25	24.180	VB	0.0580	1519.79199	361.59744	2.21970
26	24.438	BV	0.0566	1130.83264	295.74673	1.65161
27	24.645	VV	0.0470	150.99091	47.60033	0.22053
28	24.711	VV	0.0554	255.60504	68.73243	0.37332
29	24.785	VV	0.0584	356.13303	89.54524	0.52014
30	25.003	VV	0.0801	4471.41357	743.97949	6.53062
31	25.151	VV	0.0381	111.18071	44.51151	0.16238
32	25.220	VV	0.0508	662.08917	204.27087	0.96700
33	25.304	VV	0.0466	52.39380	17.65448	0.07652
34	25.408	VV	0.0594	91.36728	21.56363	0.13344
35	25.534	VV	0.0491	314.20853	91.52866	0.45891
36	25.591	VV	0.0493	264.39612	80.44978	0.38616
37	25.831	VV	0.0616	117.34103	28.16400	0.17138
38	25.992	VV	0.0769	43.92994	8.01917	0.06416
39	26.099	VV	0.0500	36.46241	11.19909	0.05325
40	26.205	VV	0.0742	36.77903	8.22781	0.05372
41	26.328	VV	0.0563	456.99625	126.01627	0.66746
42	26.454	VV	0.0583	648.10999	174.46132	0.94658
43	26.565	VV	0.0741	475.79199	90.77679	0.69491
44	26.750	VV	0.0725	320.58411	62.83567	0.46822
45	26.896	VV	0.0661	368.15451	77.92523	0.53770
46	27.118	VV	0.0677	2005.06506	405.35944	2.92845
47	27.275	VV	0.0632	68.63052	15.95124	0.10024
48	27.344	VV	0.0438	32.21699	10.49805	0.04705
49	27.439	VV	0.0825	148.53763	24.58521	0.21694
50	27.630	VV	0.0666	239.63702	55.26979	0.35000
51	27.823	VV	0.0651	889.75250	203.23405	1.29951
52	27.928	VV	0.0842	461.44049	73.58784	0.67395
53	28.166	VV	0.0651	106.54755	22.16219	0.15562
54	28.268	VV	0.0575	100.13038	24.60245	0.14624
55	28.340	VV	0.0522	114.46989	28.93388	0.16719
56	28.428	VV	0.0627	214.48741	49.32108	0.31326
57	28.556	VV	0.0586	114.71786	25.42414	0.16755
58	28.639	VV	0.0653	297.72318	67.68236	0.43483
59	28.830	VV	0.0611	2391.39819	568.10327	3.49270
60	29.022	VV	0.0596	175.92987	44.05442	0.25695
61	29.187	VV	0.0597	872.12659	217.75308	1.27377

Sample Name: NAGARMOTHA NNO (BMV)

Peak #	RetTime [min]	Type	Width [min]	Area [pA*s]	Height [pA]	Area %
62	29.287	VV	0.0484	69.32462	19.07749	0.10125
63	29.374	VV	0.0540	64.92228	17.20317	0.09482
64	29.445	VV	0.0513	56.46076	15.96483	0.08246
65	29.591	VV	0.0668	3004.14233	676.66595	4.38763
66	29.767	VV	0.0572	4046.81836	978.89832	5.91049
67	29.865	VV	0.0426	177.11784	63.33711	0.25869
68	29.943	VV	0.0737	596.27026	112.79726	0.87087
69	30.085	VV	0.0609	247.67371	56.76569	0.36173
70	30.166	VV	0.0418	75.98090	27.05668	0.11097
71	30.294	VV	0.0791	334.58789	55.70222	0.48867
72	30.355	VV	0.0469	228.26569	70.23288	0.33339
73	30.424	VV	0.0596	305.82498	76.64738	0.44667
74	30.715	VV	0.1260	1070.43079	106.71652	1.56339
75	31.046	VV	0.0773	1501.98682	277.02423	2.19369
76	31.113	VV	0.0583	926.14093	223.84355	1.35265
77	31.464	VV	0.0702	5131.95703	994.60895	7.49537
78	31.702	VV	0.0653	999.10876	218.67355	1.45923
79	31.836	VV	0.0868	167.34860	25.10771	0.24442
80	32.061	VV	0.0540	498.20612	141.81567	0.72764
81	32.188	VV	0.0544	87.22405	19.81270	0.12739
82	32.269	VV	0.0590	359.86340	91.30147	0.52559
83	32.448	VV	0.0825	134.87166	22.33323	0.19698
84	32.627	VV	0.0821	104.21942	16.62423	0.15222
85	32.778	VV	0.0567	28.61766	6.84945	0.04180
86	32.867	VB	0.0938	36.61731	5.22419	0.05348
87	33.085	BV	0.0810	39.60302	6.16092	0.05784
88	33.333	VV	0.0909	51.77666	7.55626	0.07562
89	33.444	VV	0.0569	57.34608	14.91453	0.08376
90	33.583	VV	0.0592	30.05480	7.42812	0.04390
91	33.656	VV	0.0476	20.50476	5.74743	0.02995
92	33.831	VV	0.0982	139.78911	18.91137	0.20417
93	34.000	VV	0.0658	70.79455	14.78991	0.10340
94	34.145	VV	0.0554	222.23058	61.13432	0.32457
95	34.330	VV	0.0560	217.69740	56.44169	0.31795
96	34.602	VV	0.0620	48.82037	11.87067	0.07130
97	34.782	VV	0.0778	58.19177	10.32454	0.08499
98	34.918	VB	0.0705	15.71714	2.93399	0.02296
99	35.249	BV	0.0535	41.25102	11.87964	0.06025
100	35.343	VV	0.0558	55.75552	14.86165	0.08143
101	35.502	VV	0.0814	117.83881	21.36037	0.17211
102	35.648	VV	0.0820	88.06066	14.26456	0.12862
103	36.051	VV	0.0585	1171.30322	300.10614	1.71072
104	36.128	VB	0.0438	54.38427	19.33126	0.07943
105	36.360	BV	0.0522	542.23669	165.69029	0.79195
106	36.489	VV	0.0576	22.76350	6.09100	0.03325
107	36.622	VV	0.0466	31.74380	10.11931	0.04636
108	36.681	VV	0.0423	33.09476	11.24925	0.04834
109	36.765	VB	0.0618	292.29984	69.83063	0.42691
110	37.064	BV	0.0517	522.98242	153.57394	0.76383
111	37.194	VB	0.0822	25.19815	3.90981	0.03680
112	37.514	BB	0.0532	15.58486	4.51961	0.02276
113	37.698	BV	0.0508	29.19663	7.95527	0.04264
114	37.798	VB	0.0665	99.65064	22.15903	0.14554
115	60.312	BB	0.1291	90.93568	8.47859	0.13281

Peak #	RetTime [min]	Type	Width [min]	Area [pA*s]	Height [pA]	Area %
116	71.171	BB	0.2449	1088.77124	52.73154	1.59018
117	72.778	BB	0.2465	1065.74011	51.91072	1.55654

Totals : 6.84684e4 1.48941e4

=====
*** End of Report ***