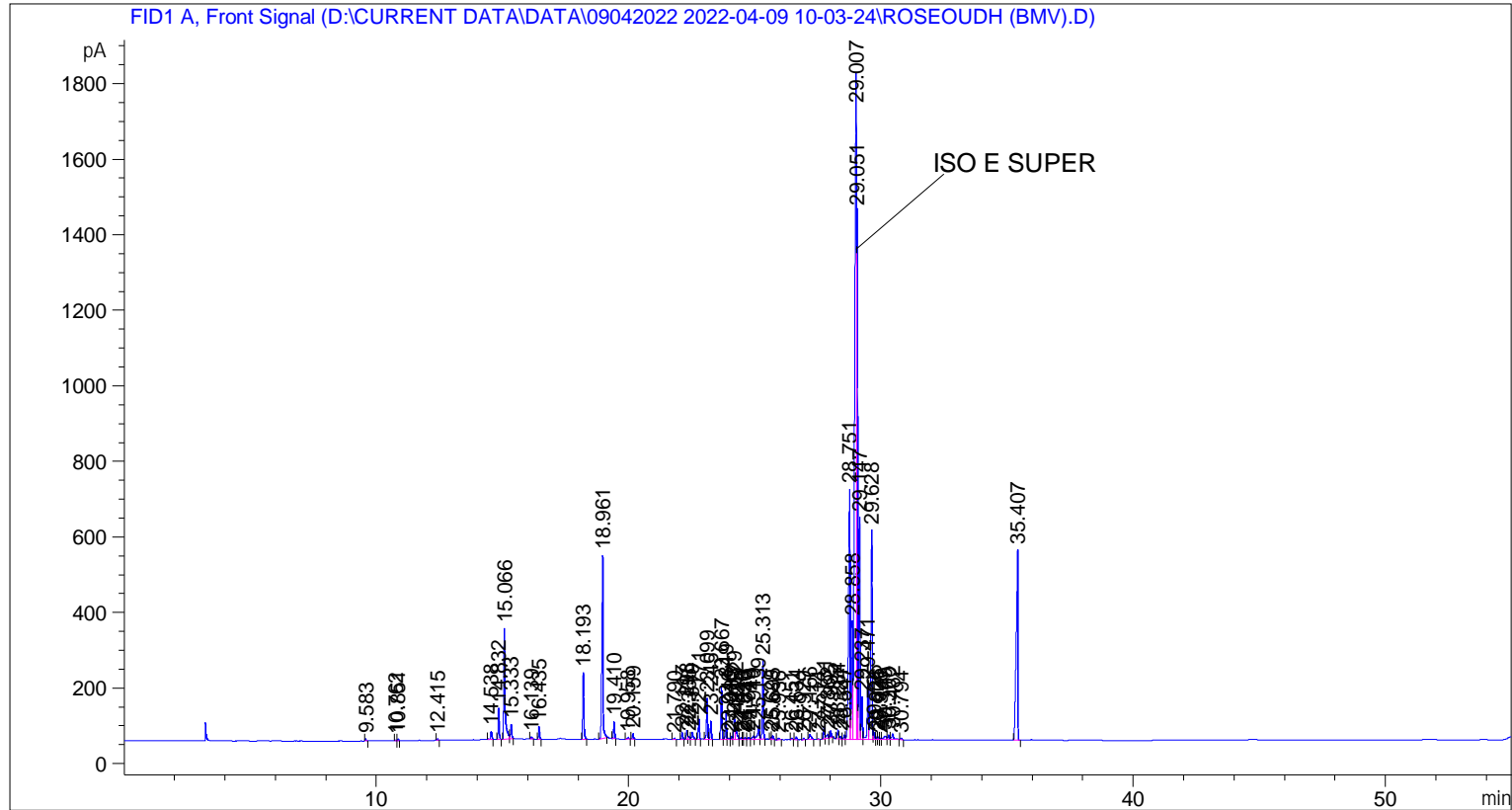


```
=====
Acq. Operator   : SYSTEM                      Seq. Line :    4
Acq. Instrument : BMV_NEW_GC_7820           Location  : Vial 104
Injection Date  : 09-Apr-22 1:33:42 PM      Inj       :    1
                                           Inj Volume: 0.5 µl

Acq. Method     : D:\CURRENT DATA\DATA\09042022 2022-04-09 10-03-24\UNIVERSAL BMV.M
Last changed    : 09-Apr-22 10:03:36 AM by SYSTEM
Analysis Method : C:\CHEM32\2\METHODS\COOLING.M
Last changed    : 12-Apr-22 1:24:45 PM by SYSTEM
                 (modified after loading)

Additional Info : Peak(s) manually integrated
=====
```



=====  
 Area Percent Report  
 =====

```
Sorted By      :      Signal
Multiplier     :      1.0000
Dilution       :      1.0000
Do not use Multiplier & Dilution Factor with ISTDs
```

Signal 1: FID1 A, Front Signal

Peak #	RetTime [min]	Type	Width [min]	Area [pA*s]	Height [pA]	Area %
1	9.583	BB	0.0437	15.65996	5.58014	0.05072
2	10.762	BV	0.0456	6.54369	2.20533	0.02119
3	10.851	VB	0.0453	15.01852	5.11521	0.04864
4	12.415	BB	0.0460	11.65037	3.88827	0.03773
5	14.538	BB	0.0483	72.06779	22.57119	0.23342
6	14.832	BB	0.0449	242.18048	83.46534	0.78440
7	15.066	BV	0.0579	1135.26758	294.93790	3.67704

Sample Name: ROSEODUH (BMV)

Peak #	RetTime [min]	Type	Width [min]	Area [pA*s]	Height [pA]	Area %
8	15.333	VB	0.0497	127.91653	38.56429	0.41431
9	16.139	BB	0.0438	16.08412	5.90697	0.05210
10	16.435	BB	0.0458	101.05764	33.90206	0.32732
11	18.193	BB	0.0493	568.56635	177.93657	1.84154
12	18.961	BB	0.0502	1747.72961	483.74695	5.66075
13	19.410	BB	0.0443	130.30164	45.70312	0.42204
14	19.958	BB	0.0714	20.40847	3.94255	0.06610
15	20.159	BB	0.0470	45.57907	14.76372	0.14763
16	21.790	BB	0.0576	11.01690	2.81724	0.03568
17	22.117	BB	0.0492	57.38490	18.49746	0.18587
18	22.298	BV	0.0506	78.34933	23.67675	0.25377
19	22.366	VV	0.0546	36.07556	9.23229	0.11685
20	22.510	VB	0.0618	83.43819	19.54541	0.27025
21	22.771	BB	0.0469	158.61932	52.95535	0.51376
22	23.099	BV	0.0481	334.06622	108.10938	1.08201
23	23.245	VB	0.0471	147.86491	49.12195	0.47892
24	23.667	BB	0.0491	443.92719	143.39854	1.43784
25	23.849	BV	0.0496	233.37158	72.35157	0.75587
26	23.946	VB	0.0629	19.00885	4.27703	0.06157
27	24.083	BV	0.0482	29.71317	9.57748	0.09624
28	24.179	VV	0.0499	176.83073	54.45184	0.57274
29	24.252	VB	0.0669	124.16951	26.89358	0.40217
30	24.449	BV	0.0562	17.68567	4.78121	0.05728
31	24.526	VV	0.0476	12.76948	3.96488	0.04136
32	24.613	VV	0.0606	22.23757	5.45388	0.07203
33	24.740	VV	0.0551	23.37927	6.04812	0.07572
34	24.940	VV	0.0722	45.92839	9.05459	0.14876
35	25.139	VV	0.0669	175.31369	36.56595	0.56783
36	25.313	VB	0.0471	641.50226	207.22374	2.07777
37	25.629	BV	0.0402	10.93693	4.09336	0.03542
38	25.695	VB	0.0569	41.77761	10.84964	0.13531
39	25.936	BB	0.0655	20.41463	4.37387	0.06612
40	26.451	BB	0.0481	14.44772	4.67192	0.04679
41	26.634	BB	0.0524	22.62558	6.70638	0.07328
42	26.929	BB	0.0462	12.41382	4.36578	0.04021
43	27.166	BB	0.0747	71.90185	13.16823	0.23288
44	27.514	BB	0.0448	5.44229	1.93727	0.01763
45	27.731	BV	0.0492	101.12245	31.72032	0.32753
46	27.882	VV	0.0737	53.02999	9.70920	0.17176
47	27.995	VB	0.0489	56.74030	18.41757	0.18378
48	28.284	BV	0.0526	75.75144	22.31043	0.24535
49	28.384	VV	0.0540	23.50364	6.84725	0.07613
50	28.547	VV	0.0520	40.35045	11.19816	0.13069
51	28.751	VV	0.0587	2821.70703	662.08752	9.13928
52	28.858	VV	0.0450	937.12177	312.56628	3.03526
53	29.007	VV	0.0638	8881.17578	1761.87036	28.76540
54	29.051	VV	0.0320	3119.82910	1399.61609	10.10487
55	29.147	VV	0.0476	1794.20654	587.57422	5.81129
56	29.237	VV	0.0465	354.85724	113.27769	1.14935
57	29.471	VV	0.0520	482.57794	144.19960	1.56303
58	29.628	VV	0.0591	2145.92236	554.53918	6.95047
59	29.725	VV	0.0547	64.99937	18.63606	0.21053
60	29.826	VV	0.0474	22.83782	7.12745	0.07397
61	29.901	VV	0.0498	21.24914	6.56613	0.06882

Sample Name: ROSEODH (BMV)

Peak #	RetTime [min]	Type	Width [min]	Area [pA*s]	Height [pA]	Area %
62	29.976	VV	0.0462	10.82210	3.68895	0.03505
63	30.149	VV	0.1001	64.68115	9.07846	0.20950
64	30.300	VV	0.0582	44.80259	11.82763	0.14511
65	30.462	VB	0.0789	82.47095	14.82611	0.26712
66	30.794	BB	0.0472	13.07154	4.33462	0.04234
67	35.407	BB	0.0610	2333.02905	503.75281	7.55649

Totals : 3.08745e4 8356.16644

=====  
\*\*\* End of Report \*\*\*