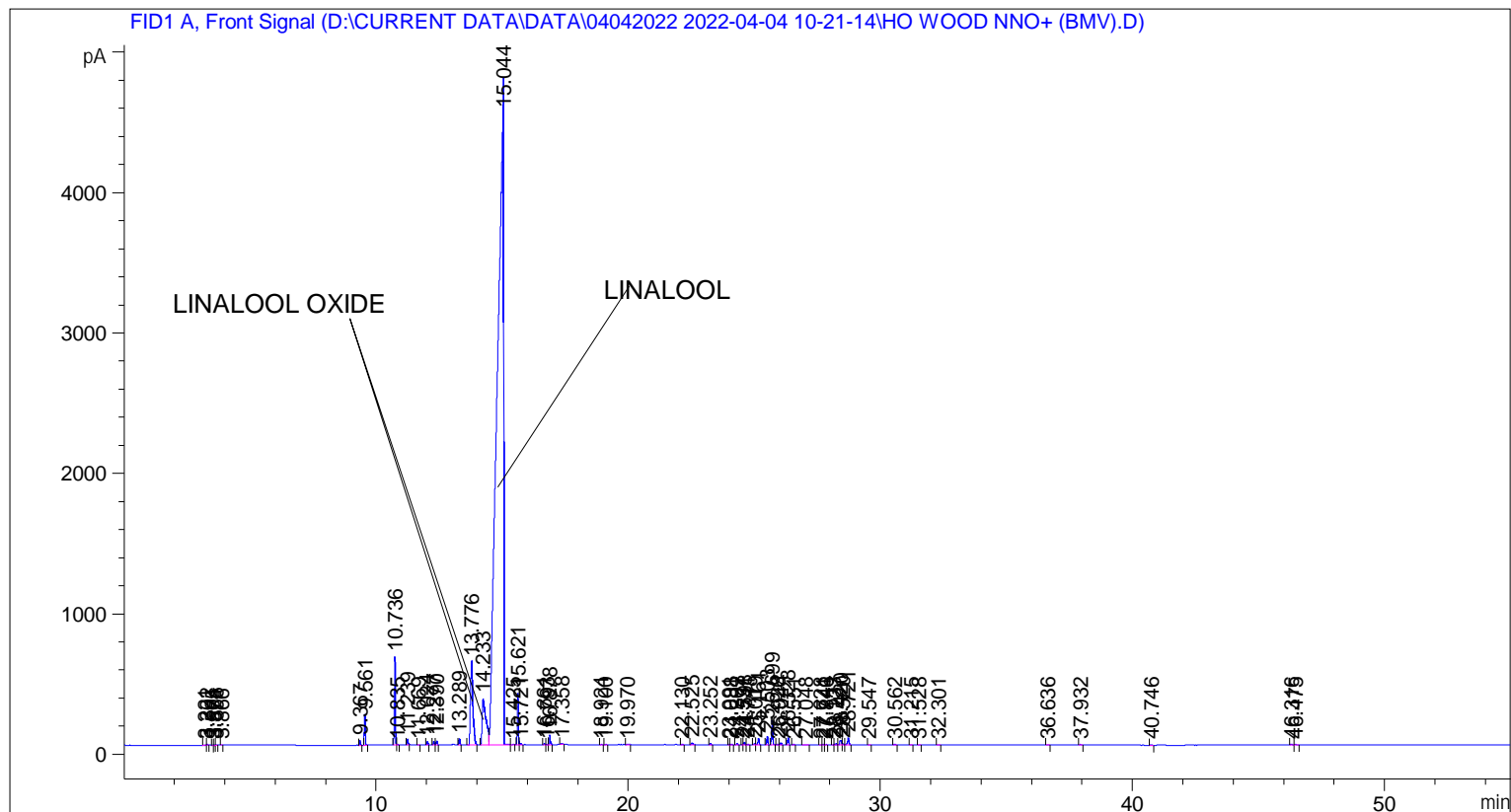


```
=====
Acq. Operator   : SYSTEM                               Seq. Line :    2
Acq. Instrument : BMV_NEW_GC_7820                     Location  : Vial 102
Injection Date  : 04-Apr-22 11:39:03 AM                Inj       :    1
                                                    Inj Volume: 0.5 µl

Acq. Method     : D:\CURRENT DATA\DATA\04042022 2022-04-04 10-21-14\UNIVERSAL BMV.M
Last changed    : 04-Apr-22 10:21:14 AM by SYSTEM
Analysis Method : C:\CHEM32\2\METHODS\COOLING.M
Last changed    : 14-May-22 11:46:48 AM by SYSTEM
                (modified after loading)
=====
```



=====  
 Area Percent Report  
 =====

```
Sorted By      : Signal
Multiplier     : 1.0000
Dilution       : 1.0000
Do not use Multiplier & Dilution Factor with ISTDs
```

Signal 1: FID1 A, Front Signal

Peak #	RetTime [min]	Type	Width [min]	Area [pA*s]	Height [pA]	Area %
1	3.221	BB	0.0262	5.16134	2.97807	0.00544
2	3.302	BB	0.0297	12.43985	6.13469	0.01312
3	3.505	BB	0.0217	3.17689	2.22566	0.00335
4	3.574	BB	0.0252	3.81672	2.31579	0.00403
5	3.656	BB	0.0238	8.72278	5.72763	0.00920
6	3.866	BB	0.0258	2.37601	1.47720	0.00251
7	9.367	BB	0.0398	86.08688	33.68555	0.09082
8	9.561	BB	0.0407	579.66345	219.95027	0.61151

Sample Name: HO WOOD NNO+ (BMV)

Peak #	RetTime [min]	Type	Width [min]	Area [pA*s]	Height [pA]	Area %
9	10.736	BV	0.0426	1709.01135	630.61426	1.80292
10	10.835	VB	0.0449	14.54912	4.85937	0.01535
11	11.239	BB	0.0432	115.23979	41.79619	0.12157
12	11.669	BB	0.0430	6.76953	2.47021	0.00714
13	12.024	BB	0.0431	69.50360	25.22765	0.07332
14	12.277	BV	0.0424	72.80967	26.20243	0.07681
15	12.390	VB	0.0511	87.97373	26.95459	0.09281
16	13.289	BB	0.0438	129.55597	46.14000	0.13667
17	13.776	BB	0.1022	3883.04932	594.80396	4.09641
18	14.233	BV	0.1456	3556.42896	325.13937	3.75185
19	15.044	VV	0.2028	8.10047e4	4753.82520	85.45570
20	15.425	VB	0.0404	6.56841	2.61004	0.00693
21	15.621	BV	0.0428	1000.42200	367.18253	1.05539
22	15.721	VB	0.0482	20.57547	6.63182	0.02171
23	16.661	BB	0.0438	29.60464	10.20424	0.03123
24	16.793	BV	0.0450	13.87691	4.90507	0.01464
25	16.878	VB	0.0471	214.94537	71.47791	0.22676
26	17.358	BB	0.0686	26.04158	5.18710	0.02747
27	18.924	BB	0.0464	9.07906	2.99240	0.00958
28	19.100	BB	0.0505	6.79072	2.11229	0.00716
29	19.970	BB	0.0771	23.08901	4.26714	0.02436
30	22.130	BB	0.0471	14.82934	4.92545	0.01564
31	22.525	BB	0.0662	50.26821	10.62237	0.05303
32	23.252	BB	0.0453	22.89471	7.79772	0.02415
33	23.991	BV	0.0491	11.66423	3.76568	0.01231
34	24.088	VB	0.0511	12.80418	4.03025	0.01351
35	24.302	BB	0.0579	29.87077	7.59537	0.03151
36	24.537	BV	0.0408	16.32174	6.18868	0.01722
37	24.598	VB	0.0477	57.36936	18.22977	0.06052
38	24.741	BB	0.0483	23.96204	7.69752	0.02528
39	25.019	BV	0.0617	45.87227	10.75875	0.04839
40	25.161	VB	0.0514	155.11641	45.92298	0.16364
41	25.503	BB	0.0473	181.70653	60.09017	0.19169
42	25.699	BB	0.0493	558.36353	174.83418	0.58904
43	25.926	BV	0.0444	14.41362	4.88511	0.01521
44	26.044	VB	0.0483	48.38593	15.54598	0.05104
45	26.328	BB	0.0484	161.01361	51.64829	0.16986
46	26.551	BB	0.0515	22.15106	6.54511	0.02337
47	27.048	BB	0.0830	16.67553	2.74128	0.01759
48	27.628	BV	0.0534	10.60171	3.06148	0.01118
49	27.741	VV	0.0522	13.71073	3.98101	0.01446
50	27.846	VB	0.0485	12.98285	3.83492	0.01370
51	28.133	BV	0.0501	16.30798	5.12707	0.01720
52	28.227	VB	0.0527	34.66971	9.94548	0.03657
53	28.420	BV	0.0802	170.77820	34.83848	0.18016
54	28.520	VV	0.0476	25.92512	8.05333	0.02735
55	28.721	VB	0.0602	206.89270	51.10832	0.21826
56	29.547	BB	0.0493	12.19980	3.53293	0.01287
57	30.562	BB	0.0553	24.78671	6.83214	0.02615
58	31.215	BB	0.0551	9.79945	2.65019	0.01034
59	31.528	BB	0.0516	10.18517	2.85896	0.01074
60	32.301	BB	0.0604	11.53872	2.72255	0.01217
61	36.636	BB	0.0536	7.88099	2.26680	0.00831
62	37.932	BB	0.0571	14.78144	3.82458	0.01559

Peak #	RetTime [min]	Type	Width [min]	Area [pA*s]	Height [pA]	Area %
63	40.746	BB	0.0559	9.09933	2.53243	0.00960
64	46.316	BV	0.0637	33.48224	7.14518	0.03532
65	46.475	VB	0.0728	20.11503	3.79631	0.02122

Totals : 9.47914e4 7832.03542

=====  
\*\*\* End of Report \*\*\*