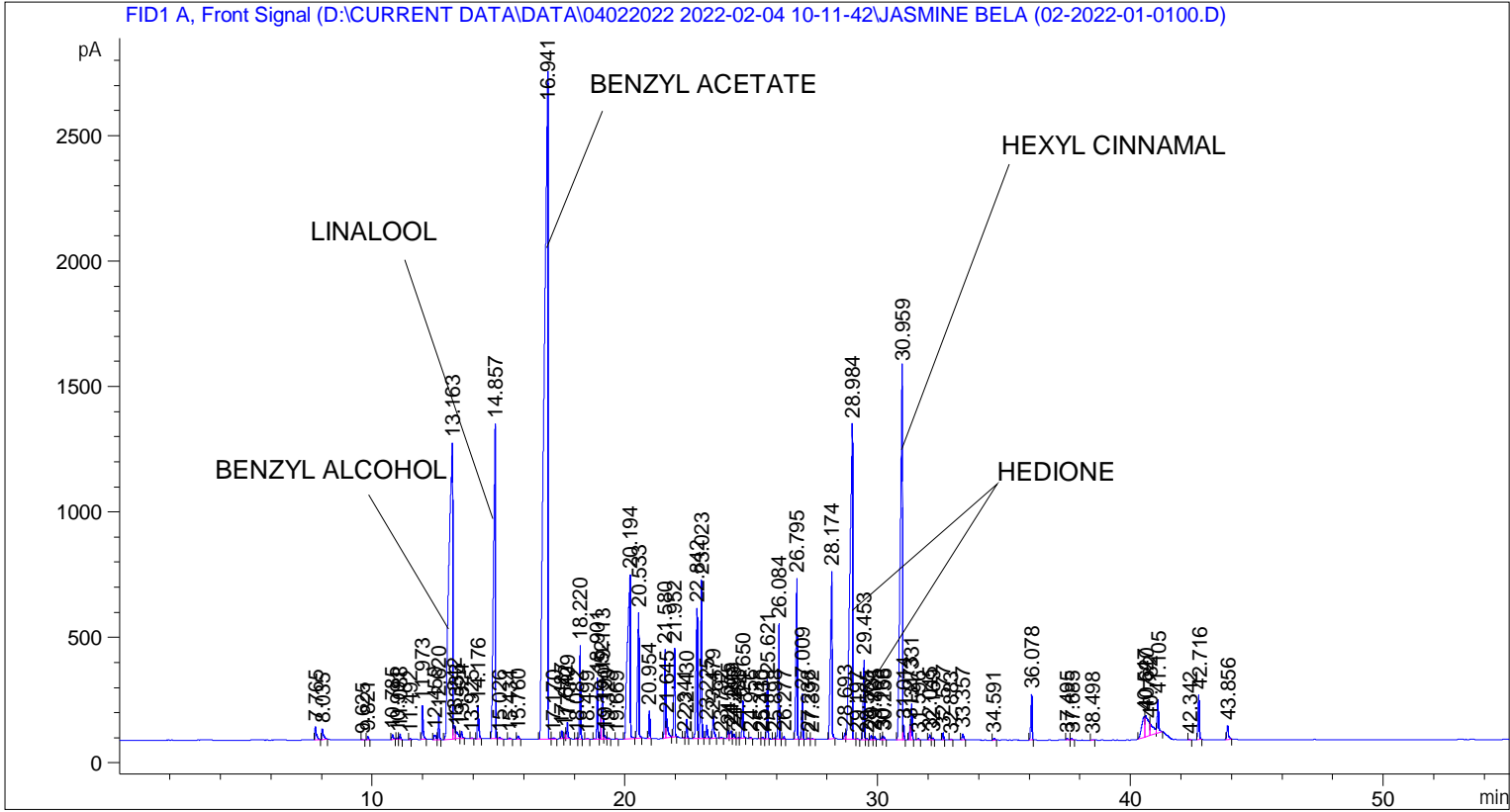


```

=====
Acq. Operator   : SYSTEM                               Seq. Line :    2
Acq. Instrument : BMV_NEW_GC_7820                     Location  : Vial 102
Injection Date  : 04-Feb-22 11:26:57 AM                Inj       :    1
                                                    Inj Volume: 0.5 µl

Acq. Method    : D:\CURRENT DATA\DATA\04022022 2022-02-04 10-11-42\UNIVERSAL BMV.M
Last changed   : 04-Feb-22 10:11:52 AM by SYSTEM
Analysis Method : C:\CHEM32\2\METHODS\COOLING.M
Last changed   : 02-Mar-22 4:31:35 PM by SYSTEM
                (modified after loading)
  
```



=====
 Area Percent Report
 =====

```

Sorted By      : Signal
Multiplier    : 1.0000
Dilution      : 1.0000
Do not use Multiplier & Dilution Factor with ISTDs
  
```

Signal 1: FID1 A, Front Signal

Peak #	RetTime [min]	Type	Width [min]	Area [pA*s]	Height [pA]	Area %
1	7.765	BB	0.0544	207.67226	52.20325	0.20823
2	8.035	BB	0.0617	189.97031	41.23702	0.19048
3	9.625	BB	0.0473	6.49524	2.14579	0.00651
4	9.821	BB	0.0490	44.79844	14.12144	0.04492
5	10.785	BB	0.0571	79.37787	19.23880	0.07959
6	10.991	BV	0.0403	12.25375	4.88332	0.01229
7	11.088	VB	0.0464	61.97841	21.03185	0.06214
8	11.492	BV	0.0420	9.58581	3.60194	0.00961

Peak #	RetTime [min]	Type	Width [min]	Area [pA*s]	Height [pA]	Area %
9	11.973	BB	0.0486	430.52844	133.43549	0.43168
10	12.459	BV	0.0649	89.10099	18.58387	0.08934
11	12.620	VB	0.0446	298.02090	103.49571	0.29882
12	13.163	BV	0.1234	1.17867e4	1181.57043	11.81826
13	13.242	VV	0.0764	281.30051	50.95744	0.28205
14	13.333	VV	0.0781	166.61110	29.39607	0.16706
15	13.524	VB	0.0569	111.46432	28.30089	0.11176
16	13.925	BB	0.0649	14.15479	3.31014	0.01419
17	14.176	BB	0.0547	471.47296	131.96829	0.47273
18	14.857	BV	0.0696	6633.68506	1255.79944	6.65143
19	15.026	VB	0.0650	27.03880	6.30998	0.02711
20	15.434	BB	0.0670	19.71897	4.60361	0.01977
21	15.760	BB	0.0597	53.22057	13.87686	0.05336
22	16.941	BV	0.1272	2.74892e4	2647.13892	27.56271
23	17.170	VB	0.0606	18.53161	4.36235	0.01858
24	17.487	BB	0.0457	94.73213	31.83579	0.09499
25	17.642	BV	0.0405	64.87086	24.05889	0.06504
26	17.709	VB	0.0475	206.69498	64.22266	0.20725
27	18.082	BV	0.0487	15.16884	4.82199	0.01521
28	18.220	VB	0.0436	1042.27588	372.53183	1.04506
29	18.499	BB	0.0740	16.21889	3.38160	0.01626
30	18.901	BV	0.0438	683.12085	243.09680	0.68495
31	19.052	VV	0.0407	315.40063	119.74123	0.31624
32	19.113	VV	0.0447	738.28387	248.27480	0.74026
33	19.190	VV	0.0516	47.18374	13.55056	0.04731
34	19.323	VB	0.0506	18.39543	5.28772	0.01844
35	19.669	BB	0.0435	6.24272	2.31314	0.00626
36	20.194	BB	0.0992	5168.73828	653.79535	5.18256
37	20.533	BB	0.0528	1962.14246	500.30063	1.96739
38	20.954	BB	0.0420	303.27155	110.60719	0.30408
39	21.580	BV	0.0474	1078.01392	355.18524	1.08090
40	21.645	VB	0.0631	345.11993	75.83408	0.34604
41	21.952	BB	0.0488	1114.61353	353.78925	1.11759
42	22.341	BV	0.0387	10.61031	4.03003	0.01064
43	22.430	VB	0.0465	227.90701	77.02682	0.22852
44	22.842	BV	0.0538	1990.32703	518.78589	1.99565
45	23.023	VB	0.0511	2220.30078	629.80951	2.22624
46	23.225	BB	0.0590	199.77863	51.78944	0.20031
47	23.479	BB	0.0564	332.83426	87.48322	0.33372
48	23.792	BB	0.0533	18.01266	5.08298	0.01806
49	24.075	BV	0.0566	120.01378	32.12934	0.12033
50	24.208	VV	0.0677	147.28316	29.76211	0.14768
51	24.299	VB	0.0587	67.49847	17.22545	0.06768
52	24.483	BV	0.0495	18.11765	5.48481	0.01817
53	24.650	VB	0.0482	481.52011	150.83548	0.48281
54	24.956	BB	0.0425	13.14260	5.20620	0.01318
55	25.345	BV	0.0437	6.44902	2.37690	0.00647
56	25.430	VB	0.0478	22.03902	7.39221	0.02210
57	25.621	BB	0.0469	708.89642	236.91960	0.71079
58	25.898	BV	0.0457	14.73674	4.95730	0.01478
59	26.084	VB	0.0481	1501.78394	460.23517	1.50580
60	26.277	BB	0.0465	27.08758	9.42515	0.02716
61	26.795	BB	0.0544	2382.50342	640.85242	2.38888
62	27.009	BB	0.0434	494.00491	177.78806	0.49533

Peak #	RetTime [min]	Type	Width [min]	Area [pA*s]	Height [pA]	Area %
63	27.238	BB	0.0473	19.14968	6.33645	0.01920
64	27.392	BB	0.0656	17.25333	3.75586	0.01730
65	28.174	BB	0.0618	3079.66260	667.70654	3.08790
66	28.693	BV	0.0545	91.18877	24.47572	0.09143
67	28.984	VV	0.0864	8764.32813	1256.50562	8.78777
68	29.197	VB	0.0537	13.58725	3.89079	0.01362
69	29.453	BV	0.0491	1063.88293	317.62863	1.06673
70	29.565	VB	0.0475	9.04508	2.97345	0.00907
71	29.731	BV	0.0519	57.40361	16.37623	0.05756
72	29.865	VB	0.0465	40.38781	12.90042	0.04050
73	30.166	BV	0.0475	41.61342	13.65755	0.04172
74	30.238	VB	0.0536	38.31165	11.00523	0.03841
75	30.959	BV	0.0741	8673.23242	1486.00867	8.69643
76	31.014	VB	0.0413	156.51155	60.34251	0.15693
77	31.273	BV	0.0417	161.29599	61.31047	0.16173
78	31.331	VB	0.0456	435.25961	142.62674	0.43642
79	31.596	BB	0.0611	21.11474	4.91669	0.02117
80	32.045	BV	0.0587	81.07236	19.40245	0.08129
81	32.169	VB	0.0476	23.14246	7.38676	0.02320
82	32.577	BB	0.0463	81.94519	27.08856	0.08216
83	32.883	BB	0.0472	7.56361	2.58394	0.00758
84	33.357	BB	0.0609	91.30572	22.73120	0.09155
85	34.591	BB	0.0575	23.79534	5.96859	0.02386
86	36.078	BB	0.0499	612.24445	183.45505	0.61388
87	37.495	BB	0.0638	28.95621	6.28190	0.02903
88	37.685	BB	0.0585	18.92146	5.19996	0.01897
89	38.498	BB	0.0574	8.10074	2.17614	0.00812
90	40.547	BV	0.0875	589.01990	81.36957	0.59060
91	40.620	VV	0.1236	876.88080	84.11267	0.87923
92	40.782	VV	0.1187	490.61948	49.46251	0.49193
93	41.105	VB	0.0593	524.23962	135.01109	0.52564
94	42.342	BB	0.0441	8.19390	2.57883	0.00822
95	42.716	BB	0.0518	626.77795	179.38602	0.62845
96	43.856	BB	0.0596	229.03122	52.85910	0.22964

Totals : 9.97333e4 1.70683e4

=====
*** End of Report ***