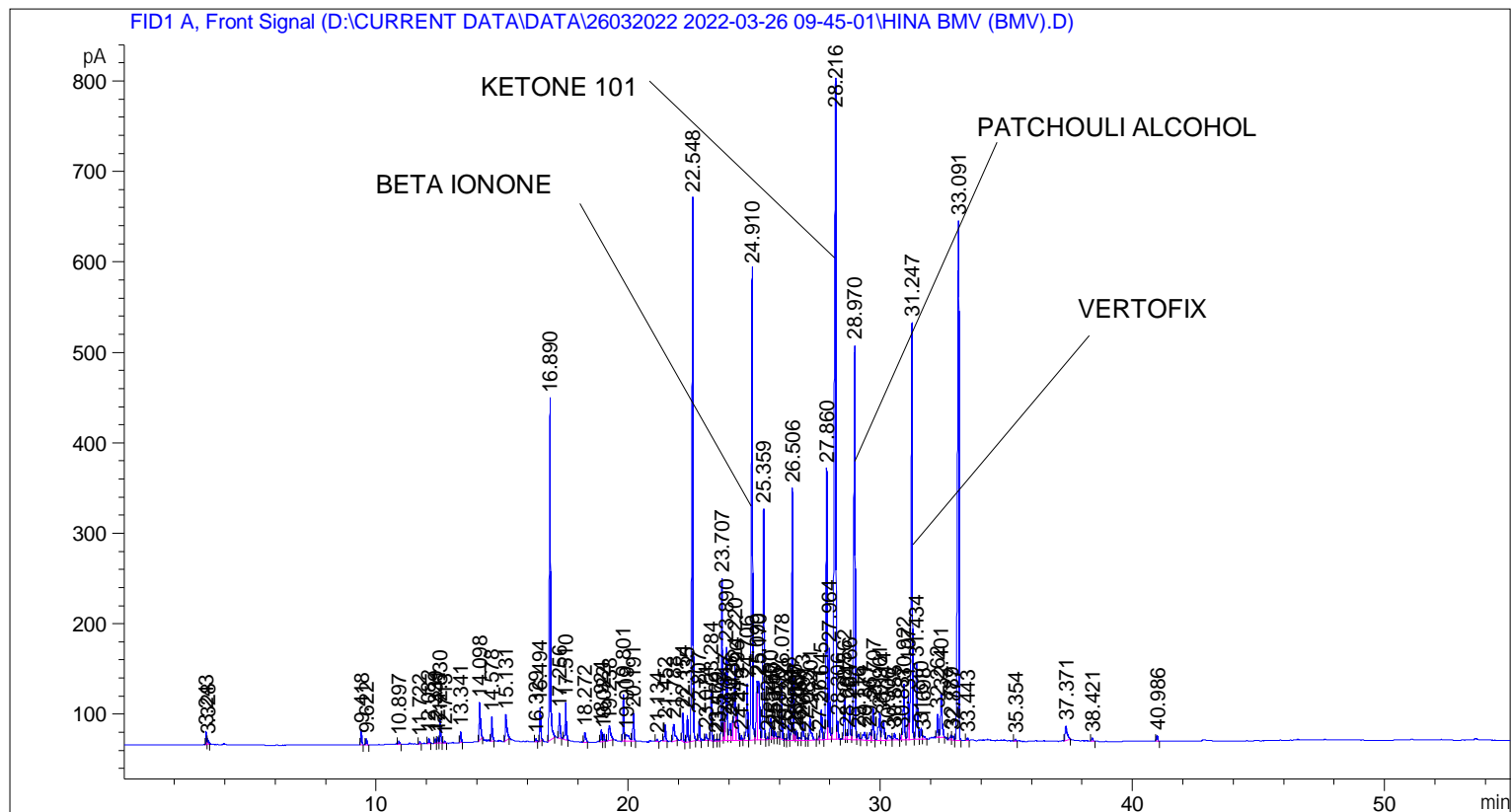


Sample Name: HINA BMV (BMV)

```

=====
Acq. Operator   : SYSTEM                               Seq. Line :    1
Acq. Instrument : BMV_NEW_GC_7820                     Location  : Vial 101
Injection Date  : 26-Mar-22 9:55:49 AM                Inj       :    1
                                                    Inj Volume: 0.5 µl

Acq. Method    : D:\CURRENT DATA\DATA\26032022 2022-03-26 09-45-01\UNIVERSAL BMV.M
Last changed   : 26-Mar-22 9:45:12 AM by SYSTEM
Analysis Method: C:\CHEM32\2\METHODS\COOLING.M
Last changed   : 28-Mar-22 2:50:50 PM by SYSTEM
                (modified after loading)
    
```



Area Percent Report

```

Sorted By      : Signal
Multiplier    : 1.0000
Dilution      : 1.0000
Do not use Multiplier & Dilution Factor with ISTDs
    
```

Signal 1: FID1 A, Front Signal

Peak #	RetTime [min]	Type	Width [min]	Area [pA*s]	Height [pA]	Area %
1	3.243	BV	0.0374	40.27137	14.98284	0.16415
2	3.328	VB	0.0385	13.49265	4.84510	0.05500
3	9.418	BB	0.0447	49.69831	17.21636	0.20258
4	9.622	BB	0.0466	20.58574	6.93325	0.08391
5	10.897	BB	0.0463	8.67672	3.03865	0.03537
6	11.722	BB	0.0453	6.53201	2.28609	0.02663
7	12.082	BB	0.0451	18.84560	6.44535	0.07682
8	12.339	BV	0.0435	14.53731	5.05617	0.05926

Sample Name: HINA BMV (BMV)

Peak #	RetTime [min]	Type	Width [min]	Area [pA*s]	Height [pA]	Area %
9	12.441	VV	0.0468	19.27105	6.45925	0.07855
10	12.530	VB	0.0465	83.26813	27.35764	0.33941
11	12.713	BB	0.0438	5.75415	2.04893	0.02345
12	13.341	BB	0.0447	35.15040	12.16366	0.14328
13	14.098	BB	0.0533	145.25464	41.07484	0.59207
14	14.578	BB	0.0470	82.37432	26.68891	0.33577
15	15.131	BB	0.0673	136.21649	29.25166	0.55523
16	16.329	BB	0.0443	10.93496	3.61498	0.04457
17	16.494	BB	0.0455	112.16584	36.82811	0.45720
18	16.890	BB	0.0528	1255.29028	377.84802	5.11671
19	17.256	BB	0.0514	93.35809	27.67794	0.38054
20	17.510	BB	0.0498	136.95798	41.22332	0.55826
21	18.272	BB	0.0608	45.79671	11.18192	0.18667
22	18.924	BV	0.0429	38.17406	13.54671	0.15560
23	19.022	VB	0.0469	25.21387	8.18988	0.10277
24	19.238	BB	0.0886	96.22422	16.36580	0.39222
25	19.801	BV	0.0448	150.40776	51.93471	0.61308
26	19.909	VV	0.1196	69.24690	7.30408	0.28226
27	20.191	VB	0.0467	93.24625	30.50243	0.38008
28	21.134	BB	0.0454	7.89163	2.83749	0.03217
29	21.452	BB	0.0499	57.06720	18.03215	0.23261
30	21.788	BB	0.0741	99.12234	18.92449	0.40403
31	22.154	BB	0.0477	94.13492	31.64781	0.38370
32	22.335	BV	0.0492	94.93437	29.73447	0.38696
33	22.548	VB	0.0490	2008.06604	600.70044	8.18511
34	22.807	BB	0.0470	71.07117	23.65998	0.28969
35	23.074	BB	0.0544	26.33870	7.08215	0.10736
36	23.284	BB	0.0474	172.25136	56.76309	0.70212
37	23.469	BV	0.0457	5.48266	1.90044	0.02235
38	23.572	VV	0.0485	5.99432	1.97021	0.02443
39	23.707	VV	0.0486	549.73181	180.31253	2.24077
40	23.817	VV	0.0434	61.74478	22.24868	0.25168
41	23.890	VV	0.0546	369.55695	103.60934	1.50636
42	24.026	VV	0.0604	79.68309	19.21085	0.32480
43	24.136	VV	0.0501	78.55219	22.86392	0.32019
44	24.220	VV	0.0557	304.21280	83.15347	1.24001
45	24.296	VV	0.0644	163.74153	35.76858	0.66743
46	24.479	VB	0.0515	18.06079	5.33218	0.07362
47	24.706	BV	0.0521	214.38028	62.34629	0.87384
48	24.910	VV	0.0523	1797.71155	520.40015	7.32768
49	25.099	VV	0.0591	264.44901	65.46082	1.07792
50	25.170	VV	0.0672	287.22940	65.47504	1.17078
51	25.359	VB	0.0502	814.68054	255.71864	3.32073
52	25.524	BV	0.0424	8.48118	3.05578	0.03457
53	25.630	VV	0.0508	77.27568	23.22605	0.31498
54	25.730	VV	0.0482	28.79727	9.27880	0.11738
55	25.817	VB	0.0529	28.82495	8.23150	0.11749
56	25.970	BV	0.0376	6.66769	2.71532	0.02718
57	26.078	VB	0.0492	200.71548	64.62357	0.81814
58	26.226	BV	0.0530	7.25901	2.06450	0.02959
59	26.348	VV	0.0525	59.53455	17.56515	0.24267
60	26.506	VV	0.0492	914.39911	278.95667	3.72719
61	26.596	VV	0.0484	30.79533	9.61373	0.12553
62	26.667	VV	0.0522	36.46951	10.57980	0.14865

Sample Name: HINA BMV (BMV)

Peak #	RetTime [min]	Type	Width [min]	Area [pA*s]	Height [pA]	Area %
63	26.767	VV	0.0677	17.48624	3.59487	0.07128
64	26.913	VV	0.0584	79.10796	20.30779	0.32245
65	27.083	VV	0.0449	8.83928	2.79378	0.03603
66	27.201	VB	0.0678	121.64589	25.88705	0.49584
67	27.561	BV	0.0464	13.58251	4.60148	0.05536
68	27.645	VB	0.0561	119.81831	33.17915	0.48839
69	27.860	BV	0.0512	983.91669	300.13293	4.01056
70	27.964	VB	0.0487	324.65732	100.40371	1.32334
71	28.216	BV	0.0639	3234.78149	727.79865	13.18534
72	28.306	VB	0.0525	66.26347	19.57338	0.27010
73	28.562	BV	0.0515	154.04974	46.69242	0.62792
74	28.664	VV	0.0513	24.51409	7.08912	0.09992
75	28.766	VV	0.0555	146.10420	38.29704	0.59554
76	28.970	VV	0.0516	1556.32092	436.24780	6.34374
77	29.116	VV	0.0677	29.23432	6.34933	0.11916
78	29.371	VV	0.0909	58.46293	8.64364	0.23830
79	29.567	VV	0.0844	51.41415	8.28204	0.20957
80	29.707	VV	0.0566	140.43192	37.61653	0.57242
81	29.961	VV	0.0683	153.27115	30.68549	0.62475
82	30.114	VV	0.0777	129.02774	21.90127	0.52593
83	30.306	VV	0.1157	49.64543	5.48023	0.20236
84	30.555	VB	0.0682	37.83688	7.71550	0.15423
85	30.837	BV	0.0471	21.18366	6.66542	0.08635
86	30.922	VV	0.0542	217.42960	61.56184	0.88627
87	31.107	VV	0.0525	174.64728	49.11862	0.71188
88	31.247	VV	0.0551	1662.96899	461.13791	6.77845
89	31.434	VV	0.0614	342.40875	84.33032	1.39570
90	31.610	VV	0.0538	43.80325	12.23109	0.17855
91	31.698	VB	0.0754	20.46704	3.54180	0.08343
92	32.262	BV	0.0492	86.33446	26.33682	0.35191
93	32.401	VB	0.0590	196.88498	47.88682	0.80253
94	32.789	BV	0.0619	26.10023	5.75820	0.10639
95	32.877	VV	0.0530	16.35375	4.65801	0.06666
96	33.091	VB	0.0583	2233.15015	574.82690	9.10257
97	33.443	BB	0.0471	8.67262	2.96531	0.03535
98	35.354	BB	0.0459	6.71764	2.31322	0.02738
99	37.371	BB	0.0768	88.92035	15.76623	0.36245
100	38.421	BB	0.0528	13.48132	3.94757	0.05495
101	40.986	BB	0.0535	20.98182	6.03978	0.08552

Totals : 2.45332e4 6759.48970

```

=====
*** End of Report ***

```