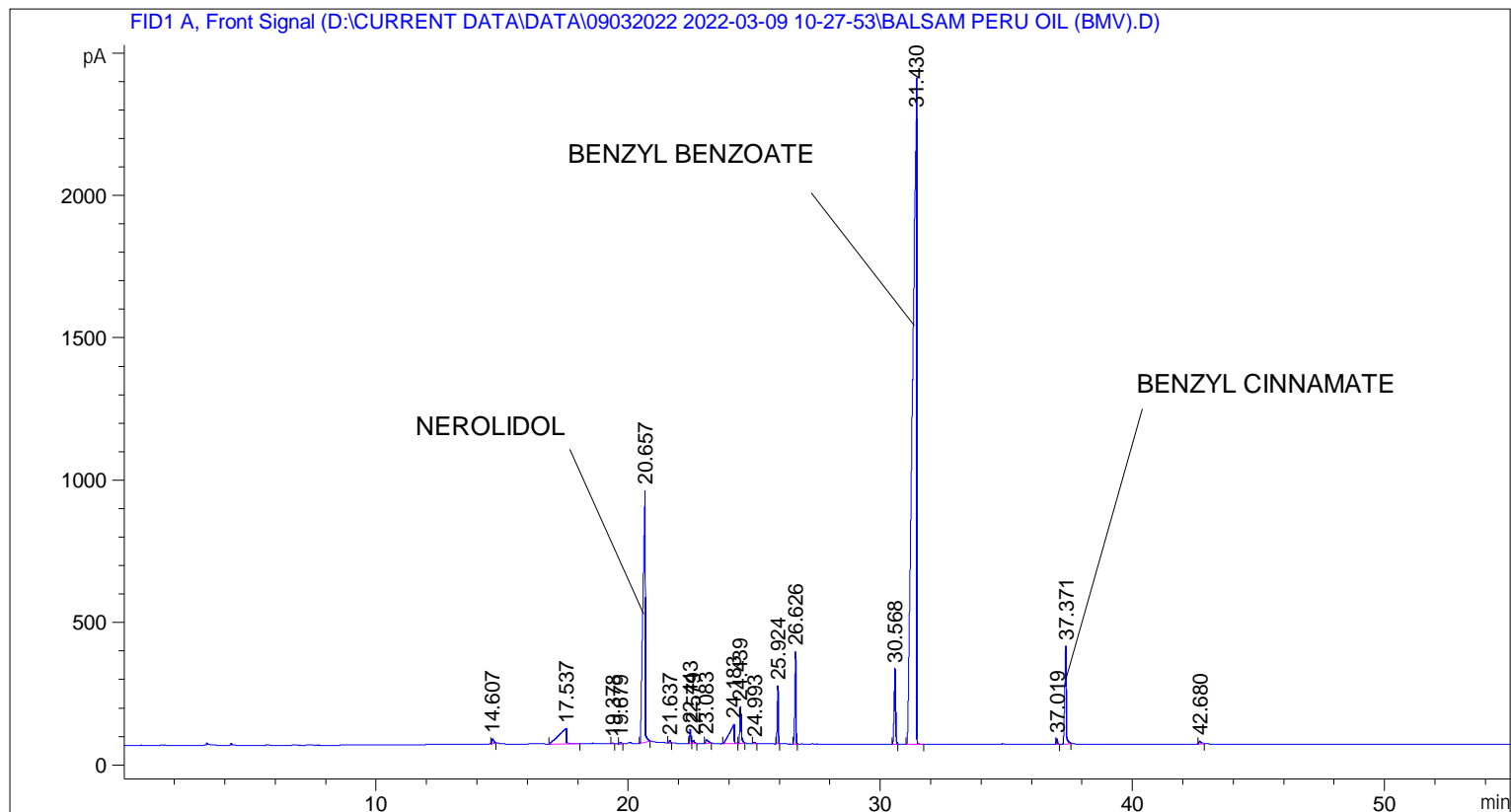


```

=====
Acq. Operator   : SYSTEM                               Seq. Line :    1
Acq. Instrument : BMV_NEW_GC_7820                     Location  : Vial 101
Injection Date  : 09-Mar-22 10:38:45 AM                Inj       :    1
                                                    Inj Volume: 0.5 µl

Acq. Method     : D:\CURRENT DATA\DATA\09032022 2022-03-09 10-27-53\UNIVERSAL.BMV.M
Last changed    : 09-Mar-22 10:28:03 AM by SYSTEM
Analysis Method : C:\CHEM32\2\METHODS\COOLING.M
Last changed    : 05-Nov-20 11:10:00 AM by SYSTEM
Additional Info  : Peak(s) manually integrated
  
```



=====
 Area Percent Report
 =====

```

Sorted By      :      Signal
Multiplier     :      1.0000
Dilution      :      1.0000
Do not use Multiplier & Dilution Factor with ISTDs
  
```

Signal 1: FID1 A, Front Signal

Peak #	RetTime [min]	Type	Width [min]	Area [pA*s]	Height [pA]	Area %
1	14.607	BB	0.0711	83.71510	16.82390	0.21370
2	17.537	BB	0.2515	1169.74207	55.13057	2.98598
3	19.378	BB	0.0514	16.82644	4.73673	0.04295
4	19.679	BB	0.0571	25.31943	6.54523	0.06463
5	20.657	BB	0.0814	5811.29395	886.86603	14.83438
6	21.637	BB	0.0501	30.36896	9.29989	0.07752
7	22.443	BV	0.0512	169.63168	50.53900	0.43302
8	22.579	VB	0.0702	51.51540	10.49958	0.13150

Peak #	RetTime [min]	Type	Width [min]	Area [pA*s]	Height [pA]	Area %
9	23.083	BB	0.0983	104.09406	13.90710	0.26572
10	24.183	BV	0.1594	884.96625	67.74830	2.25904
11	24.439	VB	0.0547	484.72821	129.49796	1.23736
12	24.993	BB	0.0574	16.61792	4.57439	0.04242
13	25.924	BB	0.0479	615.62750	205.95262	1.57150
14	26.626	BB	0.0481	1031.88977	324.33566	2.63409
15	30.568	BB	0.0590	1021.91443	265.03671	2.60862
16	31.430	BB	0.1334	2.61442e4	2356.66992	66.73790
17	37.019	BB	0.0480	58.67920	19.00262	0.14979
18	37.371	BB	0.0572	1391.87549	343.90012	3.55301
19	42.680	BB	0.0871	61.45265	9.42377	0.15687

Totals : 3.91745e4 4780.49011

=====
*** End of Report ***