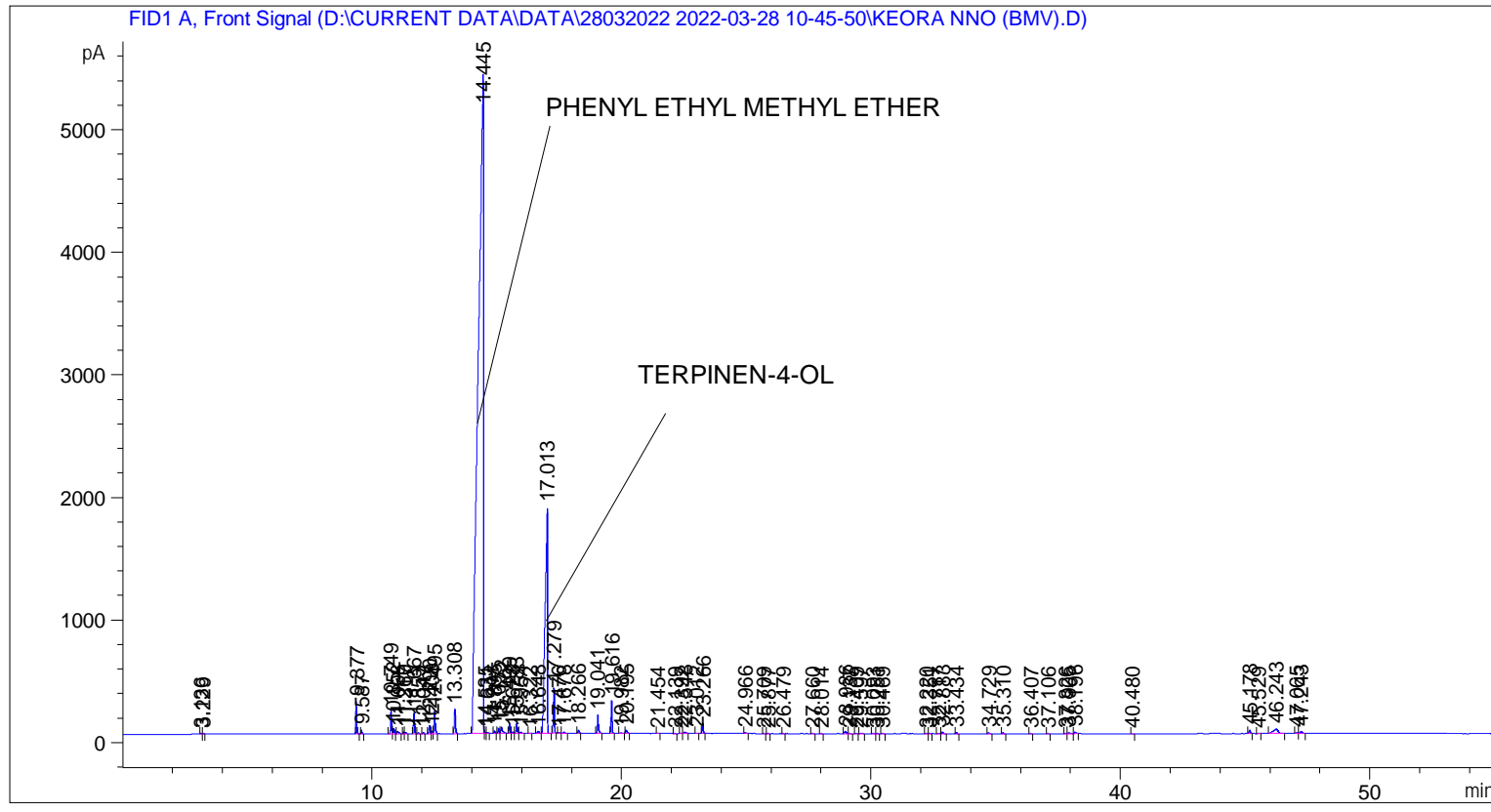


```

=====
Acq. Operator   : SYSTEM                               Seq. Line :    3
Acq. Instrument : BMV_NEW_GC_7820                     Location  : Vial 103
Injection Date  : 28-Mar-22 1:10:25 PM                 Inj       :    1
                                                    Inj Volume: 0.5 µl

Acq. Method    : D:\CURRENT DATA\DATA\28032022 2022-03-28 10-45-50\UNIVERSAL BMV.M
Last changed   : 28-Mar-22 10:46:01 AM by SYSTEM
Analysis Method: C:\CHEM32\2\METHODS\COOLING.M
Last changed   : 28-Mar-22 4:19:10 PM by SYSTEM
                (modified after loading)
  
```



=====
 Area Percent Report
 =====

```

Sorted By      : Signal
Multiplier    : 1.0000
Dilution      : 1.0000
Do not use Multiplier & Dilution Factor with ISTDs
  
```

Signal 1: FID1 A, Front Signal

Peak #	RetTime [min]	Type	Width [min]	Area [pA*s]	Height [pA]	Area %
1	3.136	BB	0.0304	10.37647	4.95461	0.01056
2	3.229	BB	0.0323	15.77692	7.00337	0.01606
3	9.377	BB	0.0426	719.29248	265.15344	0.73213
4	9.587	BB	0.0443	85.33502	29.92748	0.08686
5	10.749	BV	0.0441	551.51367	194.56648	0.56136
6	10.852	VB	0.0479	143.30789	46.55960	0.14587
7	11.008	BB	0.0631	92.02995	20.59605	0.09367
8	11.260	BV	0.0382	31.69467	13.09747	0.03226

Sample Name: KEORA NNO (BMV)

Peak #	RetTime [min]	Type	Width [min]	Area [pA*s]	Height [pA]	Area %
9	11.317	VB	0.0513	42.97922	12.14954	0.04375
10	11.667	BB	0.0450	471.30618	166.58266	0.47972
11	11.853	BB	0.0457	26.18647	9.34978	0.02665
12	12.047	BB	0.0462	36.12441	11.96542	0.03677
13	12.290	BV	0.0496	217.34229	65.60751	0.22122
14	12.408	VV	0.0494	73.08884	23.44612	0.07439
15	12.495	VB	0.0478	558.91559	182.16620	0.56889
16	13.308	BB	0.0493	639.54047	199.88541	0.65095
17	14.445	BV	0.1720	7.68764e4	5371.62939	78.24825
18	14.535	VV	0.0416	20.64972	7.39218	0.02102
19	14.631	VB	0.0420	17.28044	6.29826	0.01759
20	14.895	BB	0.0436	53.75792	19.23083	0.05472
21	15.055	BV	0.0402	104.89365	40.50149	0.10677
22	15.172	VB	0.0636	219.30223	49.55101	0.22322
23	15.499	BB	0.0438	217.82648	77.47626	0.22171
24	15.628	BV	0.0497	36.26728	10.94576	0.03691
25	15.783	VV	0.0498	256.00717	79.04061	0.26058
26	15.954	VB	0.0626	53.50972	12.58147	0.05446
27	16.322	BB	0.0524	8.88228	2.56203	0.00904
28	16.648	BB	0.0691	82.34235	18.79105	0.08381
29	17.013	BB	0.0844	1.22026e4	1838.61438	12.42039
30	17.279	BB	0.0457	1095.88806	368.08423	1.11544
31	17.476	BB	0.0493	17.04819	5.48534	0.01735
32	17.678	BB	0.0616	51.08243	11.78882	0.05199
33	18.266	BB	0.0486	91.35013	27.58745	0.09298
34	19.041	BB	0.0518	507.46289	148.90842	0.51652
35	19.616	BB	0.0444	780.47711	264.34970	0.79440
36	19.982	BB	0.0716	25.52136	5.08449	0.02598
37	20.195	BB	0.0551	103.71142	27.46181	0.10556
38	21.454	BB	0.0571	12.45264	3.37082	0.01267
39	22.139	BB	0.0473	5.48596	1.81216	0.00558
40	22.392	BV	0.0594	11.09788	2.85132	0.01130
41	22.548	VB	0.0757	55.09534	10.25052	0.05608
42	23.012	BB	0.0504	13.14988	4.21303	0.01338
43	23.266	BB	0.0460	269.41946	89.73996	0.27423
44	24.966	BB	0.0580	29.08980	8.08559	0.02961
45	25.709	BB	0.0469	9.48799	3.08012	0.00966
46	25.877	BB	0.0504	17.78551	5.54801	0.01810
47	26.479	BB	0.0390	5.02776	2.09399	0.00512
48	27.660	BB	0.0585	10.45638	2.80163	0.01064
49	28.014	BB	0.0477	6.55553	2.13946	0.00667
50	28.986	BV	0.0741	97.19463	18.85905	0.09893
51	29.137	VB	0.0531	11.85620	3.36165	0.01207
52	29.409	BB	0.0501	11.48495	3.60916	0.01169
53	29.597	BB	0.0913	28.23422	4.26008	0.02874
54	30.093	BB	0.0679	16.26101	3.58692	0.01655
55	30.251	BB	0.0565	18.81757	5.04122	0.01915
56	30.469	BB	0.0554	16.38741	4.51367	0.01668
57	32.220	BV	0.0564	12.64873	3.48313	0.01287
58	32.351	VB	0.0488	12.25354	3.99164	0.01247
59	32.717	BV	0.0600	13.88316	3.44620	0.01413
60	32.883	VB	0.0537	41.88414	12.31081	0.04263
61	33.434	BB	0.0500	35.33816	10.83723	0.03597
62	34.729	BB	0.0619	32.39102	7.28079	0.03297

Sample Name: KEORA NNO (BMV)

Peak #	RetTime [min]	Type	Width [min]	Area [pA*s]	Height [pA]	Area %
63	35.310	BB	0.0538	27.83671	7.95595	0.02833
64	36.407	BB	0.0512	10.30219	3.14543	0.01049
65	37.106	BB	0.0427	9.95681	3.34423	0.01013
66	37.826	BV	0.0548	20.80988	5.80236	0.02118
67	37.905	VB	0.1039	56.82634	7.21103	0.05784
68	38.196	BB	0.0747	61.27565	11.98389	0.06237
69	40.480	BB	0.0513	6.98979	2.18915	0.00711
70	45.178	BB	0.0553	98.40127	27.12160	0.10016
71	45.529	BB	0.0692	22.75843	4.89471	0.02316
72	46.243	BB	0.1677	488.75623	36.15551	0.49748
73	47.065	BV	0.0769	33.33515	6.08449	0.03393
74	47.243	VB	0.0824	78.71136	13.43509	0.08012

Totals : 9.82468e4 9996.26772

=====
*** End of Report ***