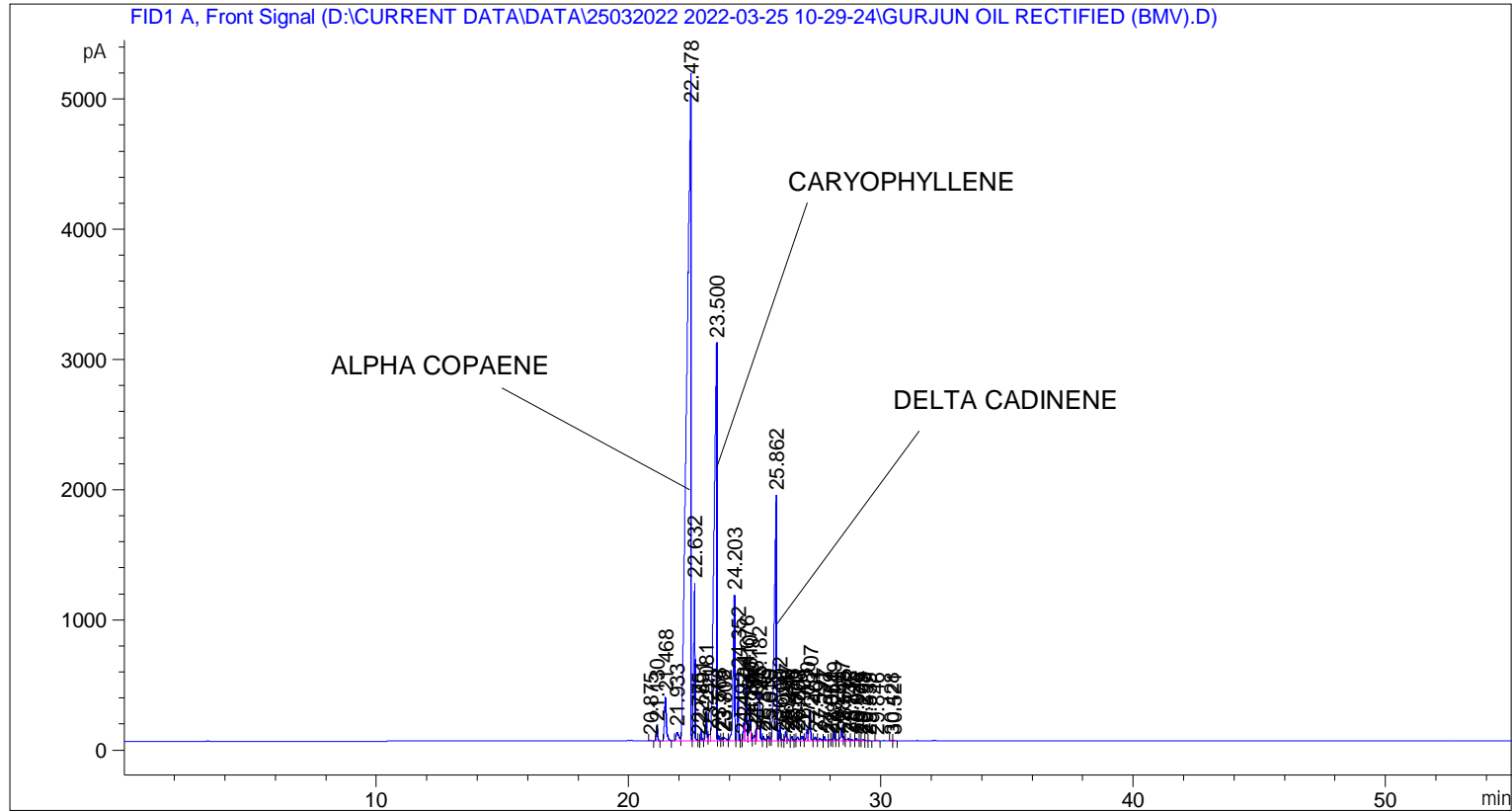


```

=====
Acq. Operator   : SYSTEM                               Seq. Line :    4
Acq. Instrument : BMV_NEW_GC_7820                     Location  : Vial 104
Injection Date  : 25-Mar-22 2:00:32 PM                 Inj       :    1
                                                    Inj Volume: 0.5 µl

Acq. Method     : D:\CURRENT DATA\DATA\25032022 2022-03-25 10-29-24\UNIVERSAL BMV.M
Last changed    : 25-Mar-22 10:29:34 AM by SYSTEM
Analysis Method : C:\CHEM32\2\METHODS\COOLING.M
Last changed    : 28-Mar-22 2:50:50 PM by SYSTEM
                (modified after loading)
  
```



=====
 Area Percent Report
 =====

```

Sorted By      :      Signal
Multiplier     :      1.0000
Dilution      :      1.0000
Do not use Multiplier & Dilution Factor with ISTDs
  
```

Signal 1: FID1 A, Front Signal

Peak #	RetTime [min]	Type	Width [min]	Area [pA*s]	Height [pA]	Area %
1	20.875	BB	0.0564	22.68922	6.23981	0.01948
2	21.130	BB	0.0565	412.04721	113.09392	0.35376
3	21.468	BB	0.0767	1729.26379	332.22971	1.48465
4	21.933	BV	0.0943	458.69583	65.01874	0.39381
5	22.478	VV	0.1366	5.77883e4	5121.21240	49.61384
6	22.632	VV	0.0567	4413.77295	1206.11719	3.78942
7	22.775	VV	0.0447	10.07492	3.48427	0.00865
8	22.891	VB	0.0439	265.72620	91.38303	0.22814

Peak #	RetTime [min]	Type	Width [min]	Area [pA*s]	Height [pA]	Area %
9	23.081	BV	0.0581	848.79102	224.42126	0.72873
10	23.221	VV	0.0696	252.79495	47.86958	0.21704
11	23.500	VV	0.0895	2.21439e4	3055.84326	19.01157
12	23.568	VV	0.0435	127.70739	43.19919	0.10964
13	23.718	VV	0.0491	75.38538	23.05401	0.06472
14	23.802	VV	0.0895	157.47032	24.01289	0.13520
15	24.203	VV	0.0585	4631.93115	1114.19275	3.97672
16	24.352	VV	0.0459	1571.32385	510.26071	1.34905
17	24.492	VV	0.0450	20.55299	6.47598	0.01765
18	24.584	VV	0.0491	434.74149	136.84096	0.37325
19	24.676	VV	0.0538	1624.92065	442.74927	1.39507
20	24.810	VV	0.0562	1118.39905	288.97891	0.96020
21	24.860	VV	0.0305	158.67154	78.81953	0.13623
22	24.987	VV	0.0596	181.66951	41.91565	0.15597
23	25.066	VV	0.0429	254.05142	90.12283	0.21811
24	25.182	VV	0.0817	2232.14282	358.40845	1.91640
25	25.346	VV	0.0641	150.95535	34.43816	0.12960
26	25.539	VV	0.0529	119.20206	34.87709	0.10234
27	25.616	VV	0.0528	78.62970	21.42989	0.06751
28	25.862	VV	0.0785	1.11759e4	1876.54285	9.59504
29	26.002	VV	0.0403	310.64246	119.49479	0.26670
30	26.096	VV	0.0453	33.12828	10.93351	0.02844
31	26.237	VV	0.0515	243.60184	70.11515	0.20914
32	26.296	VV	0.0429	78.22776	27.74425	0.06716
33	26.486	VV	0.0539	116.61910	33.29761	0.10012
34	26.600	VV	0.0502	23.29666	7.11533	0.02000
35	26.708	VV	0.0737	145.26794	28.41114	0.12472
36	26.901	VV	0.0634	173.61604	38.67819	0.14906
37	27.080	VV	0.0616	347.97223	85.31258	0.29875
38	27.207	VV	0.0601	912.01093	216.50015	0.78300
39	27.401	VV	0.0721	139.19150	29.46133	0.11950
40	27.591	VV	0.0852	102.91234	16.17122	0.08835
41	27.777	VV	0.0517	119.34640	34.17252	0.10246
42	27.979	VV	0.0616	37.79784	9.27175	0.03245
43	28.051	VV	0.0484	33.86483	10.02855	0.02907
44	28.149	VV	0.0497	261.73395	83.23933	0.22471
45	28.285	VV	0.0739	41.08041	7.74741	0.03527
46	28.457	VV	0.0579	399.46088	101.62930	0.34296
47	28.535	VV	0.0491	109.72826	34.54525	0.09421
48	28.732	VV	0.0797	100.74570	17.37074	0.08649
49	28.845	VV	0.0766	56.31607	10.49003	0.04835
50	29.042	VV	0.0691	85.31255	17.43675	0.07324
51	29.179	VV	0.0625	22.90793	5.39973	0.01967
52	29.299	VV	0.0704	51.63111	10.49224	0.04433
53	29.397	VB	0.0527	11.35180	3.02942	0.00975
54	29.539	BB	0.0502	7.59142	2.31766	0.00652
55	29.846	BB	0.0611	23.73554	5.52335	0.02038
56	30.428	BV	0.0594	18.63408	4.68867	0.01600
57	30.521	VB	0.0507	8.63434	2.67021	0.00741

Totals : 1.16476e5 1.64365e4

=====