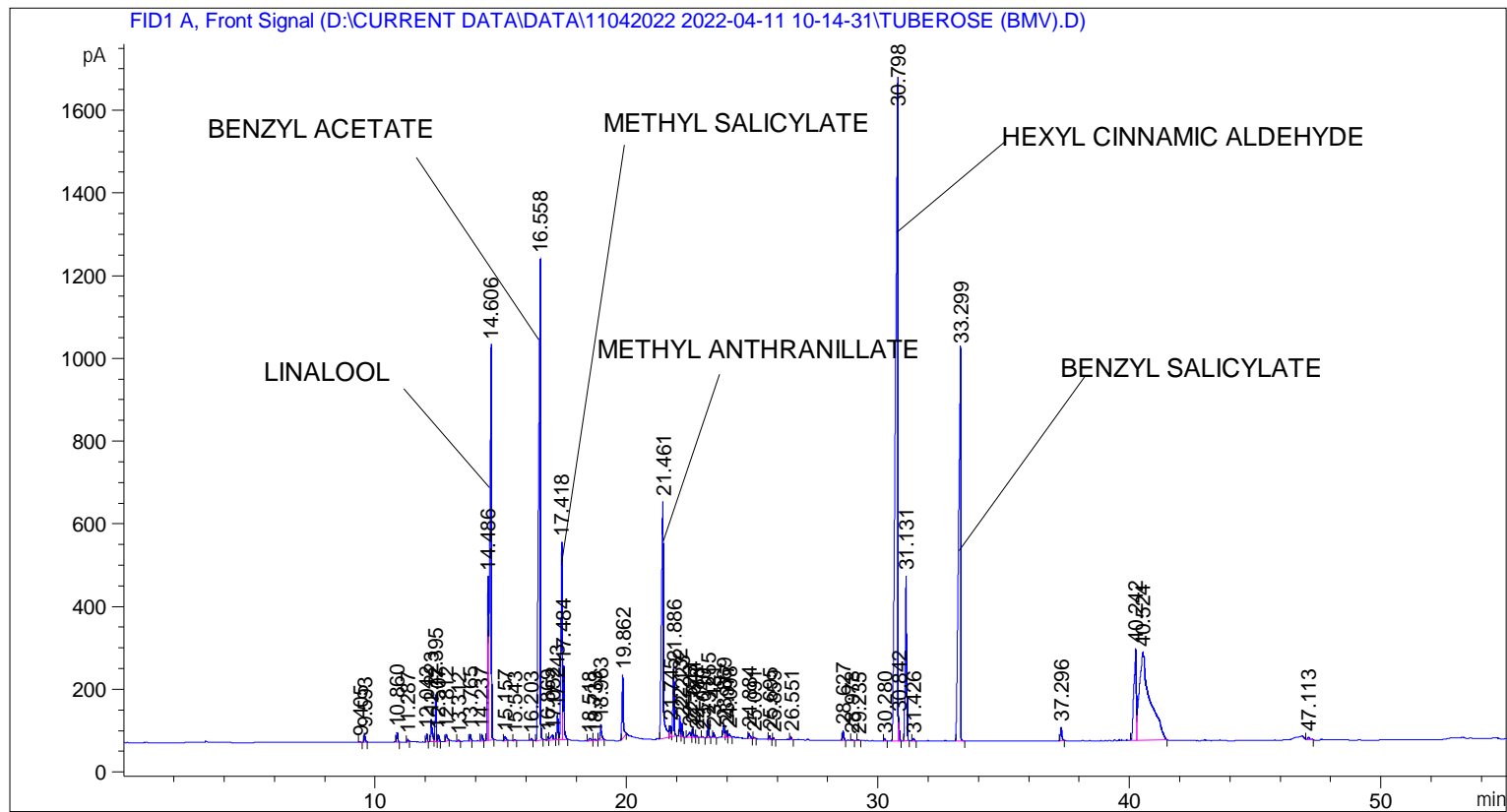


```

=====
Acq. Operator   : SYSTEM                               Seq. Line :    1
Acq. Instrument : BMV_NEW_GC_7820                     Location  : Vial 101
Injection Date  : 11-Apr-22 10:26:05 AM                Inj       :    1
                                                    Inj Volume: 0.5 µl

Acq. Method     : D:\CURRENT DATA\DATA\11042022 2022-04-11 10-14-31\UNIVERSAL BMV.M
Last changed    : 11-Apr-22 10:14:42 AM by SYSTEM
Analysis Method : C:\CHEM32\2\METHODS\COOLING.M
Last changed    : 05-Nov-20 11:10:00 AM by SYSTEM
  
```



Area Percent Report

```

Sorted By      : Signal
Multiplier     : 1.0000
Dilution      : 1.0000
Do not use Multiplier & Dilution Factor with ISTDs
  
```

Signal 1: FID1 A, Front Signal

Peak #	RetTime [min]	Type	Width [min]	Area [pA*s]	Height [pA]	Area %
1	9.405	BB	0.0474	8.27310	2.72506	0.01786
2	9.593	BB	0.0502	70.99542	21.67689	0.15329
3	10.860	BB	0.0480	75.44853	23.77308	0.16291
4	11.287	BB	0.0458	18.66759	5.92481	0.04031
5	12.042	BB	0.0440	52.46646	18.57479	0.11329
6	12.223	BV	0.0552	209.54460	54.02692	0.45245
7	12.395	VV	0.0447	324.86658	112.47484	0.70145
8	12.507	VB	0.0498	54.82277	16.46652	0.11837
9	12.812	BB	0.0605	74.02532	17.46298	0.15984

Sample Name: TUBEROSE (BMV)

Peak #	RetTime [min]	Type	Width [min]	Area [pA*s]	Height [pA]	Area %
10	13.312	BB	0.0446	10.63105	3.68868	0.02295
11	13.765	BB	0.0476	54.03684	16.78864	0.11668
12	14.237	BB	0.0494	49.33814	15.40069	0.10653
13	14.486	BV	0.0481	1193.82434	396.36935	2.57771
14	14.606	VB	0.0570	4096.77490	954.97449	8.84576
15	15.157	BB	0.0611	40.50493	9.61710	0.08746
16	15.543	BB	0.0439	8.95864	3.17344	0.01934
17	16.203	BB	0.0482	14.03008	4.51738	0.03029
18	16.558	BB	0.0661	5994.56445	1164.23425	12.94347
19	16.869	BV	0.0440	24.96784	8.81997	0.05391
20	17.052	VV	0.0811	82.26788	12.95572	0.17763
21	17.243	VV	0.0503	216.38109	65.93485	0.46721
22	17.418	VV	0.0509	1677.02795	478.29825	3.62104
23	17.484	VB	0.0468	560.96600	178.00630	1.21124
24	18.518	BB	0.0844	34.70928	5.67404	0.07494
25	18.733	BB	0.0581	11.18109	2.89497	0.02414
26	18.963	BB	0.0570	143.56627	36.39514	0.30999
27	19.862	BB	0.0555	556.60919	152.65387	1.20183
28	21.461	BV	0.0735	3062.83350	572.01758	6.61327
29	21.745	VV	0.0585	109.22137	26.81098	0.23583
30	21.886	VB	0.0476	550.42285	166.33817	1.18847
31	22.132	BV	0.0473	144.82062	49.25005	0.31270
32	22.223	VB	0.0425	89.92725	32.25856	0.19417
33	22.523	BV	0.0853	73.85135	12.25275	0.15946
34	22.644	VB	0.0511	69.29385	20.14378	0.14962
35	22.788	BB	0.0455	14.54307	4.91170	0.03140
36	23.040	BB	0.0506	11.54651	3.31408	0.02493
37	23.255	BB	0.0490	127.15120	41.25024	0.27455
38	23.481	BB	0.0511	38.91258	12.22388	0.08402
39	23.869	BV	0.0550	110.70048	28.69166	0.23902
40	23.977	VV	0.0548	60.81777	15.16729	0.13132
41	24.098	VB	0.0661	32.00022	6.77862	0.06909
42	24.884	BB	0.0675	56.89553	11.96057	0.12285
43	25.091	BB	0.0564	10.53437	2.70649	0.02275
44	25.695	BB	0.0490	32.73121	10.61835	0.07067
45	25.859	BB	0.0470	12.40792	4.13534	0.02679
46	26.551	BB	0.0464	21.55174	7.31271	0.04653
47	28.627	BB	0.0469	77.26077	24.45375	0.16682
48	28.978	BB	0.0561	10.54459	2.92119	0.02277
49	29.235	BB	0.0456	7.12878	2.47348	0.01539
50	30.280	BB	0.0517	19.68425	5.93344	0.04250
51	30.798	BV	0.0848	1.05652e4	1603.95532	22.81230
52	30.842	VB	0.0380	140.68768	56.56620	0.30377
53	31.131	BB	0.0548	1597.66919	398.58075	3.44969
54	31.426	BB	0.0599	24.18620	6.01513	0.05222
55	33.299	BB	0.0763	5633.43604	948.04108	12.16372
56	37.296	BB	0.0604	131.95018	32.47303	0.28491
57	40.242	BV	0.0894	1511.32727	222.06186	3.26326
58	40.524	VB	0.3475	6266.23584	212.21399	13.53007
59	47.113	BB	0.0887	38.53687	5.64299	0.08321

Totals : 4.63134e4 8332.97801

Sample Name: TUBEROSE (BMV)

=====

\*\*\* End of Report \*\*\*