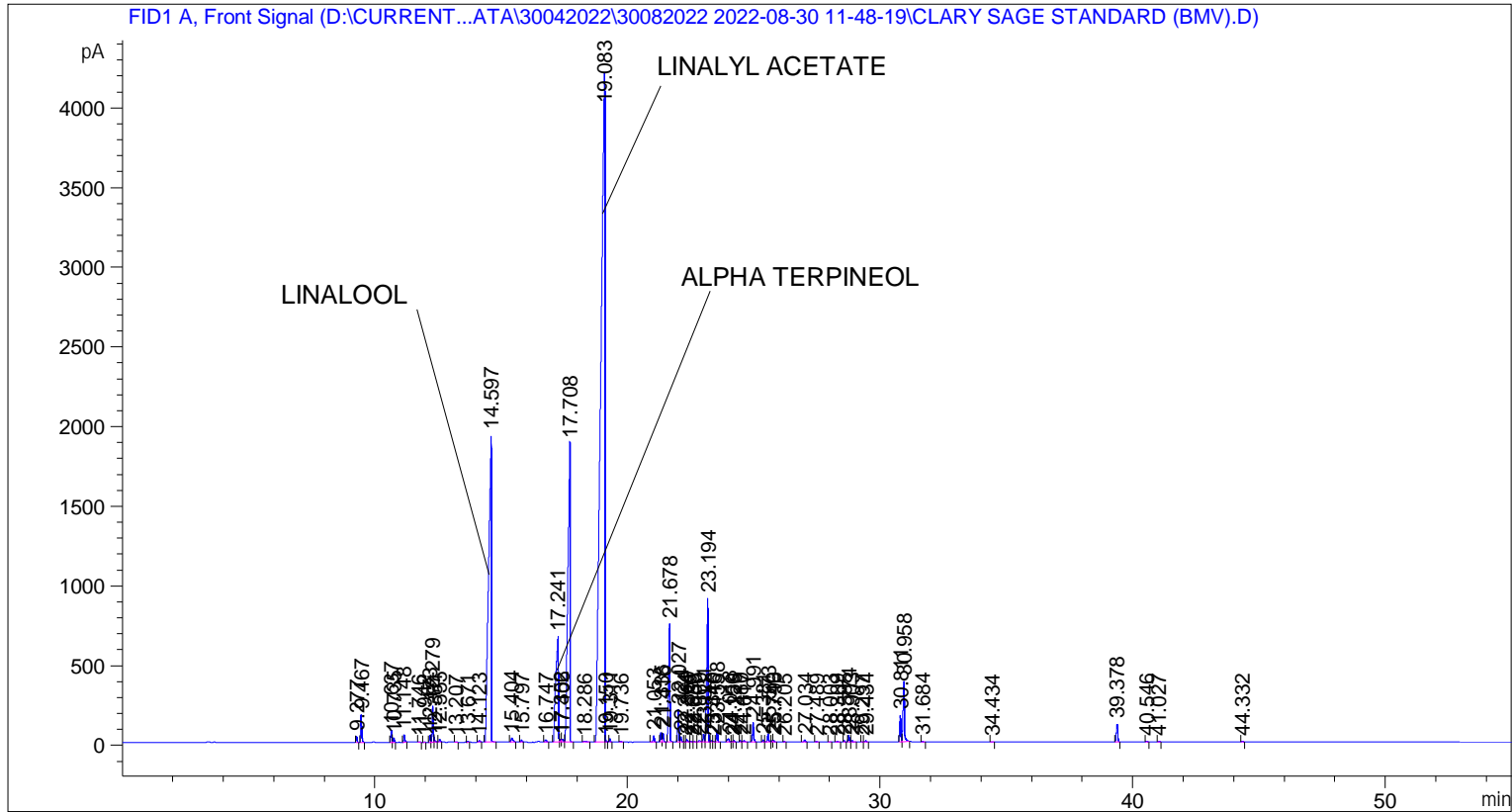


```

=====
Acq. Operator   : SYSTEM                               Seq. Line :    5
Acq. Instrument : BMV_NEW_GC_7820                     Location  : Vial 105
Injection Date  : 30-Aug-22 4:18:59 PM                 Inj       :    1
                                                    Inj Volume: 0.5 µl

Acq. Method     : D:\CURRENT DATA\DATA\30042022\30082022 2022-08-30 11-48-19\UNIVERSAL BMV.M
Last changed    : 30-Aug-22 11:48:20 AM by SYSTEM
Analysis Method  : C:\CHEM32\2\METHODS\COOLING.M
Last changed    : 05-Nov-20 11:10:00 AM by SYSTEM
  
```



=====
 Area Percent Report
 =====

```

Sorted By       : Signal
Multiplier      : 1.0000
Dilution       : 1.0000
Do not use Multiplier & Dilution Factor with ISTDs
  
```

Signal 1: FID1 A, Front Signal

Peak #	RetTime [min]	Type	Width [min]	Area [pA*s]	Height [pA]	Area %
1	9.277	BB	0.0444	113.81413	39.74186	0.12458
2	9.467	BB	0.0474	521.73749	171.87189	0.57108
3	10.637	BV	0.0461	223.93925	76.54091	0.24512
4	10.735	VB	0.0493	91.96166	28.03483	0.10066
5	11.148	BB	0.0472	146.53682	45.96121	0.16039
6	11.746	BB	0.0478	7.84335	2.63017	0.00859
7	11.942	BB	0.0447	5.29749	1.89096	0.00580
8	12.173	BV	0.0443	117.11732	40.98459	0.12819
9	12.279	VV	0.0474	688.75513	226.68874	0.75389

Sample Name: CLARY SAGE STANDARD (BMV)

Peak #	RetTime [min]	Type	Width [min]	Area [pA*s]	Height [pA]	Area %
10	12.381	VB	0.0532	31.84785	8.80407	0.03486
11	12.555	BB	0.0534	62.84748	18.14648	0.06879
12	13.207	BB	0.0488	10.94455	3.47307	0.01198
13	13.671	BB	0.0537	16.99108	4.86790	0.01860
14	14.123	BB	0.0608	41.32724	9.49624	0.04524
15	14.597	BB	0.0970	1.50407e4	1928.47253	16.46306
16	15.404	BB	0.0750	141.37878	27.04709	0.15475
17	15.797	BB	0.0520	42.29216	12.04757	0.04629
18	16.747	BB	0.0641	63.24467	15.01766	0.06923
19	17.241	BV	0.0977	4923.29736	662.59479	5.38888
20	17.352	VV	0.0557	66.40581	17.34270	0.07269
21	17.406	VV	0.0678	88.81140	18.25161	0.09721
22	17.708	VB	0.0776	1.13249e4	1871.92969	12.39593
23	18.286	BB	0.1038	40.01980	5.44391	0.04380
24	19.083	BV	0.1342	4.56729e4	4189.84375	49.99205
25	19.150	VB	0.0347	22.69952	9.90204	0.02485
26	19.311	BB	0.0397	56.61434	22.20206	0.06197
27	19.736	BB	0.0508	18.95084	6.17332	0.02074
28	21.053	BB	0.0486	130.02654	40.39250	0.14232
29	21.335	BV	0.0471	187.05704	62.18171	0.20475
30	21.416	VB	0.0506	174.17740	52.57853	0.19065
31	21.678	BB	0.0514	2680.12964	738.32324	2.93358
32	22.027	BV	0.0468	602.09546	201.87802	0.65903
33	22.124	VB	0.0497	107.82749	33.37065	0.11802
34	22.264	BV	0.0517	10.71645	3.14561	0.01173
35	22.369	VV	0.0548	56.22447	14.97328	0.06154
36	22.538	VV	0.0485	15.39177	4.78503	0.01685
37	22.659	VV	0.0686	16.61991	3.36819	0.01819
38	22.860	VV	0.1001	58.84618	7.61895	0.06441
39	23.031	VV	0.0508	159.46228	49.22913	0.17454
40	23.194	VV	0.0542	3502.68311	904.49384	3.83393
41	23.340	VV	0.0474	30.75881	10.15053	0.03367
42	23.416	VV	0.0473	10.51735	3.20289	0.01151
43	23.558	VB	0.0458	225.46413	75.67910	0.24679
44	24.018	BV	0.0706	100.85637	19.10732	0.11039
45	24.150	VV	0.0449	14.71218	5.06332	0.01610
46	24.225	VB	0.0498	31.88520	9.84748	0.03490
47	24.480	BV	0.0450	20.40618	7.21489	0.02234
48	24.617	VB	0.0687	40.50419	8.05197	0.04433
49	24.991	BB	0.0491	415.91675	124.01121	0.45525
50	25.381	BV	0.0539	41.67498	11.89816	0.04562
51	25.573	VV	0.0509	182.17761	53.27334	0.19941
52	25.749	VV	0.0432	29.62778	10.73694	0.03243
53	25.796	VB	0.0485	36.83627	11.45930	0.04032
54	26.205	BB	0.0435	15.23334	5.46030	0.01667
55	27.034	BV	0.0640	57.42813	13.12973	0.06286
56	27.489	BB	0.0491	16.03814	5.33164	0.01755
57	28.003	BB	0.0487	10.97602	3.48701	0.01201
58	28.309	BB	0.0778	25.78439	4.64312	0.02822
59	28.595	BB	0.0505	26.47332	8.01476	0.02898
60	28.774	BV	0.0512	142.19260	42.35656	0.15564
61	28.903	VB	0.0516	31.27485	9.22163	0.03423
62	29.297	BV	0.0501	7.07299	2.22370	0.00774
63	29.434	VB	0.0582	33.36476	8.61339	0.03652

Peak #	RetTime [min]	Type	Width [min]	Area [pA*s]	Height [pA]	Area %
64	30.811	BV	0.0480	525.45648	165.47865	0.57515
65	30.958	VB	0.0590	1466.59705	379.95490	1.60529
66	31.684	BB	0.0549	27.56970	7.17013	0.03018
67	34.434	BB	0.0545	9.35831	2.56858	0.01024
68	39.378	BB	0.0569	437.96347	113.90314	0.47938
69	40.546	BB	0.0532	22.28293	6.63194	0.02439
70	41.027	BB	0.0560	16.74684	4.64925	0.01833
71	44.332	BB	0.0546	22.65790	6.35414	0.02480

Totals : 9.13602e4 1.27206e4

=====
*** End of Report ***