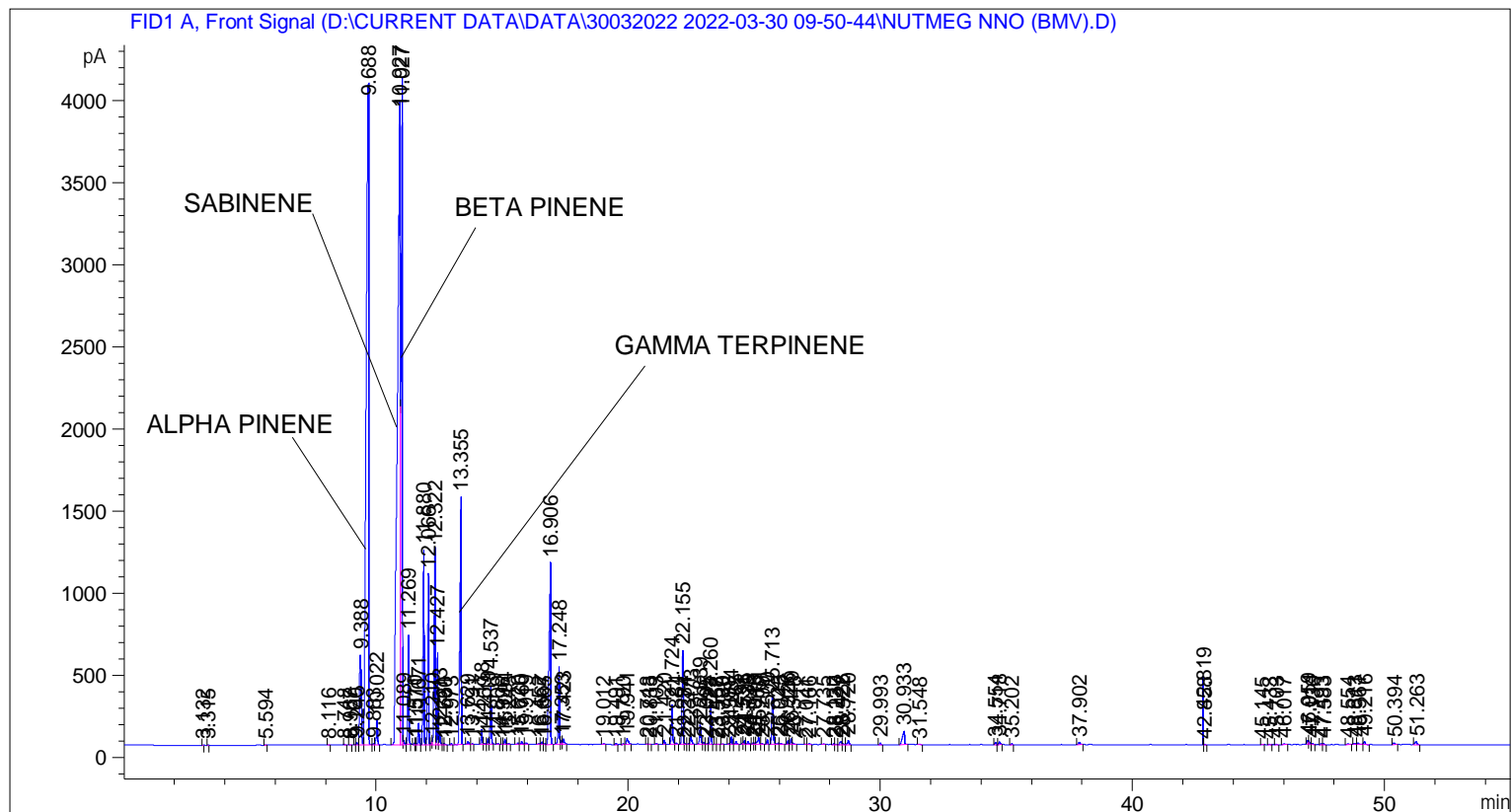


```
=====
Acq. Operator   : SYSTEM                               Seq. Line :    4
Acq. Instrument : BMV_NEW_GC_7820                     Location  : Vial 104
Injection Date  : 30-Mar-22 1:24:08 PM                 Inj       :    1
                                                    Inj Volume: 0.5 µl

Acq. Method    : D:\CURRENT DATA\DATA\30032022 2022-03-30 09-50-44\UNIVERSAL BMV.M
Last changed   : 30-Mar-22 9:50:54 AM by SYSTEM
Analysis Method: C:\CHEM32\2\METHODS\COOLING.M
Last changed   : 02-Apr-22 2:12:03 PM by SYSTEM
                (modified after loading)
=====
```



=====  
 Area Percent Report  
 =====

```
Sorted By      : Signal
Multiplier     : 1.0000
Dilution       : 1.0000
Do not use Multiplier & Dilution Factor with ISTDs
```

Signal 1: FID1 A, Front Signal

Peak #	RetTime [min]	Type	Width [min]	Area [pA*s]	Height [pA]	Area %
1	3.132	BB	0.0297	6.23774	3.21206	0.00572
2	3.315	BB	0.0288	4.47010	2.39055	0.00410
3	5.594	BB	0.0426	9.44656	3.27575	0.00866
4	8.116	BB	0.0441	10.62625	3.74167	0.00975
5	8.748	BB	0.0497	14.18619	4.39507	0.01301
6	8.967	BB	0.0424	6.62243	2.54026	0.00607
7	9.160	BV	0.0464	10.43603	3.54180	0.00957
8	9.245	VV	0.0547	57.15753	16.78427	0.05242

Sample Name: NUTMEG NNO (BMV)

Peak #	RetTime [min]	Type	Width [min]	Area [pA*s]	Height [pA]	Area %
9	9.388	VV	0.0831	2774.11670	547.16907	2.54410
10	9.688	VB	0.0735	2.18306e4	4008.02661	20.02050
11	9.883	BV	0.0553	26.40068	6.79953	0.02421
12	10.022	VB	0.0492	513.30975	152.87775	0.47075
13	10.927	BV	0.0974	3.03650e4	3916.74829	27.84727
14	11.027	VV	0.0520	1.53291e4	4065.55151	14.05807
15	11.089	VB	0.0372	69.28394	26.75567	0.06354
16	11.269	BB	0.0418	1750.05969	662.21228	1.60495
17	11.510	BV	0.0401	26.66037	10.32521	0.02445
18	11.571	VV	0.0379	12.21870	4.76758	0.01121
19	11.671	VB	0.0461	384.70728	127.96738	0.35281
20	11.880	BV	0.0457	3628.03735	1186.80115	3.32721
21	12.066	VV	0.0453	3243.40869	1041.15918	2.97448
22	12.210	VV	0.0420	67.00214	24.43499	0.06145
23	12.322	VV	0.0518	3976.34106	1195.59534	3.64664
24	12.427	VV	0.0427	1570.61328	561.13593	1.44038
25	12.513	VV	0.0429	155.66522	55.19386	0.14276
26	12.661	VV	0.0479	17.10166	5.41207	0.01568
27	12.730	VB	0.0427	6.94695	2.47555	0.00637
28	12.973	BB	0.0422	18.14201	6.58180	0.01664
29	13.355	BB	0.0507	5640.46094	1507.41394	5.17277
30	13.629	BB	0.0599	58.00566	15.78092	0.05320
31	13.791	BB	0.0477	13.12243	4.16624	0.01203
32	14.178	BV	0.0438	254.54546	90.43657	0.23344
33	14.269	VB	0.0555	22.96842	6.02350	0.02106
34	14.419	BV	0.0437	92.77645	33.13876	0.08508
35	14.537	VB	0.0466	1041.86426	351.61221	0.95548
36	14.809	BB	0.0442	11.60169	4.20862	0.01064
37	14.996	BV	0.0449	8.30417	2.85833	0.00762
38	15.094	VB	0.0454	98.55823	33.47025	0.09039
39	15.243	BB	0.0487	16.92722	5.09813	0.01552
40	15.620	BV	0.0542	34.67394	9.58113	0.03180
41	15.760	VB	0.0592	70.43788	18.19584	0.06460
42	15.919	BB	0.0633	50.53328	11.06886	0.04634
43	16.452	BV	0.0786	31.26474	5.24035	0.02867
44	16.567	VV	0.0613	64.09774	16.15560	0.05878
45	16.665	VV	0.0600	17.31676	4.48641	0.01588
46	16.906	VB	0.0648	5172.87109	1102.18066	4.74396
47	17.248	BV	0.0485	1548.86316	469.25754	1.42044
48	17.353	VV	0.0450	58.19594	19.37807	0.05337
49	17.423	VB	0.0562	119.66747	31.59364	0.10975
50	19.012	BB	0.0547	18.01901	5.04446	0.01652
51	19.491	BB	0.0539	25.21969	6.85114	0.02313
52	19.790	BV	0.0581	15.60573	4.03607	0.01431
53	19.941	VB	0.0722	170.66376	33.61393	0.15651
54	20.748	BV	0.0532	8.78691	2.43199	0.00806
55	20.833	VB	0.0412	5.82347	2.24756	0.00534
56	21.103	BB	0.0430	13.12942	4.94350	0.01204
57	21.420	BB	0.0473	76.92219	24.73918	0.07054
58	21.724	BV	0.0501	817.11707	243.98065	0.74936
59	21.884	VB	0.0553	25.63796	6.75741	0.02351
60	22.155	BV	0.0507	1905.63428	574.30859	1.74763
61	22.234	VB	0.0358	9.45176	4.28036	0.00867
62	22.371	BV	0.0428	13.69417	5.01943	0.01256

Sample Name: NUTMEG NNO (BMV)

Peak #	RetTime [min]	Type	Width [min]	Area [pA*s]	Height [pA]	Area %
63	22.473	VB	0.0588	190.11833	46.36914	0.17435
64	22.839	BV	0.0546	441.07758	120.84829	0.40451
65	22.992	VV	0.0501	38.69786	11.53571	0.03549
66	23.095	VV	0.0518	12.03151	3.52731	0.01103
67	23.260	VB	0.0479	739.90814	240.63930	0.67856
68	23.468	BV	0.0456	6.72744	2.33392	0.00617
69	23.557	VB	0.0340	4.72630	2.39510	0.00433
70	23.730	BB	0.0423	8.55839	3.18616	0.00785
71	23.988	BV	0.0488	19.04463	6.03573	0.01747
72	24.084	VB	0.0493	146.48643	45.82676	0.13434
73	24.265	BB	0.0548	74.01057	20.19139	0.06787
74	24.531	BV	0.0410	26.58775	10.02099	0.02438
75	24.595	VV	0.0474	77.67237	25.60786	0.07123
76	24.739	VB	0.0603	74.67065	18.42604	0.06848
77	24.943	BV	0.0530	33.60010	9.56984	0.03081
78	25.016	VV	0.0493	32.37221	9.60438	0.02969
79	25.161	VV	0.0666	200.38037	41.31435	0.18377
80	25.299	VB	0.0701	23.16850	4.73342	0.02125
81	25.500	BB	0.0450	84.78631	29.06900	0.07776
82	25.713	BV	0.0669	1404.94934	298.62018	1.28846
83	25.923	VV	0.0770	44.81638	7.91757	0.04110
84	26.045	VB	0.0482	23.56585	7.81942	0.02161
85	26.326	BV	0.0450	72.74910	24.94050	0.06672
86	26.449	VV	0.0527	121.58584	35.69312	0.11150
87	26.548	VB	0.0459	13.98675	4.80874	0.01283
88	27.041	BV	0.0474	6.92198	2.35059	0.00635
89	27.166	VB	0.0748	25.99153	4.75370	0.02384
90	27.735	BB	0.0669	18.05504	4.05813	0.01656
91	28.130	BV	0.0465	17.52340	5.91771	0.01607
92	28.227	VB	0.0521	16.98153	4.94643	0.01557
93	28.428	BV	0.0660	94.43184	19.68274	0.08660
94	28.522	VB	0.0480	16.17485	5.24282	0.01483
95	28.720	BB	0.0592	102.01928	25.20545	0.09356
96	29.993	BB	0.0507	31.55066	9.50222	0.02893
97	30.933	BB	0.0749	479.20755	83.51295	0.43947
98	31.548	BB	0.0577	8.45418	2.42253	0.00775
99	34.554	BB	0.0498	49.78999	15.78278	0.04566
100	34.718	BB	0.0577	71.36821	17.81462	0.06545
101	35.202	BB	0.0507	19.94241	6.16736	0.01829
102	37.902	BB	0.0709	69.55865	14.25775	0.06379
103	42.819	BV	5.84e-3	64.66858	184.56709	0.05931
104	42.858	VB	0.0491	14.65296	4.86695	0.01344
105	45.145	BB	0.0431	5.33161	2.06434	0.00489
106	45.433	BB	0.0460	10.01496	3.33732	0.00918
107	45.703	BB	0.0540	16.84944	4.90943	0.01545
108	46.017	BB	0.0699	24.49406	4.77388	0.02246
109	46.959	BV	0.0560	95.55730	25.93529	0.08763
110	47.014	VV	0.0468	63.59409	20.15214	0.05832
111	47.130	VB	0.0737	34.60099	7.25023	0.03173
112	47.493	BV	0.0532	15.95313	4.63267	0.01463
113	47.583	VB	0.0564	26.93381	7.59771	0.02470
114	48.554	BB	0.0646	19.19962	4.17828	0.01761
115	48.813	BV	0.0587	24.84138	6.63675	0.02278
116	48.961	VB	0.0735	50.64114	10.09867	0.04644

Sample Name: NUTMEG NNO (BMV)

Peak #	RetTime [min]	Type	Width [min]	Area [pA*s]	Height [pA]	Area %
117	49.216	BB	0.0663	64.38625	15.87998	0.05905
118	50.394	BB	0.0775	56.61511	10.92384	0.05192
119	51.263	BB	0.0754	92.02571	17.47437	0.08440

Totals : 1.09041e5 2.38954e4

=====  
\*\*\* End of Report \*\*\*