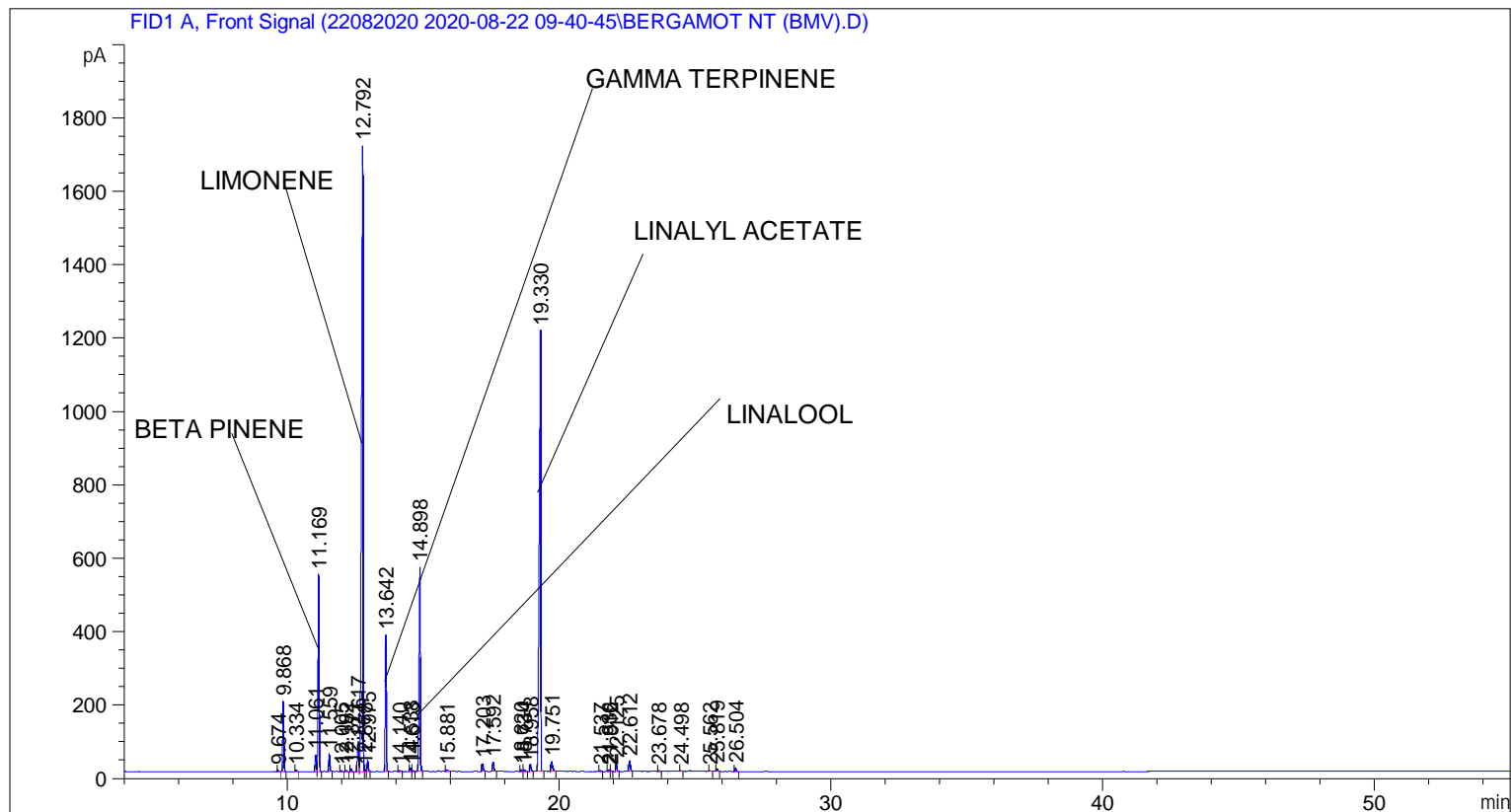


```
=====
Acq. Operator   : SYSTEM                               Seq. Line :    5
Acq. Instrument : BMV_NEW_GC_7820                     Location  : Vial 105
Injection Date  : 22-Aug-20 2:25:08 PM                 Inj       :    1
                                                    Inj Volume: 0.5 µl

Acq. Method    : C:\CHEM32\2\DATA\22082020 2020-08-22 09-40-45\UNIVERSAL BMV.M
Last changed   : 22-Aug-20 9:40:53 AM by SYSTEM
Analysis Method: C:\CHEM32\2\DATA\21082020 2020-08-21 09-38-31\UNIVERSAL BMV.M (Sequence
Method)
Last changed   : 22-Aug-20 3:42:29 PM by SYSTEM
                (modified after loading)

Additional Info : Peak(s) manually integrated
=====
```



=====
 Area Percent Report
 =====

```
Sorted By      :      Signal
Multiplier     :      1.0000
Dilution      :      1.0000
Do not use Multiplier & Dilution Factor with ISTDs
```

Signal 1: FID1 A, Front Signal

Peak #	RetTime [min]	Type	Width [min]	Area [pA*s]	Height [pA]	Area %
1	9.674	BB	0.0400	10.11751	3.92992	0.05694
2	9.868	BB	0.0410	507.96173	190.98065	2.85857
3	10.334	BB	0.0447	13.60555	4.56979	0.07657
4	11.061	BV	0.0431	120.05660	45.09505	0.67562
5	11.169	VB	0.0442	1479.20227	536.07019	8.32426
6	11.559	BB	0.0426	134.38014	48.07673	0.75623

Sample Name: BERGAMOT NT (BMV)

Peak #	RetTime [min]	Type	Width [min]	Area [pA*s]	Height [pA]	Area %
7	12.005	BB	0.0461	7.87231	2.61625	0.04430
8	12.182	BB	0.0427	10.15900	3.74304	0.05717
9	12.371	BB	0.0440	20.31718	7.17578	0.11434
10	12.617	BV	0.0521	243.77908	74.65115	1.37187
11	12.792	VV	0.0586	6805.18018	1705.30676	38.29637
12	12.878	VV	0.0457	12.29509	4.13512	0.06919
13	12.975	VB	0.0429	84.86742	31.01200	0.47759
14	13.642	BB	0.0436	1007.91797	371.55255	5.67209
15	14.140	BB	0.0559	10.98447	3.05942	0.06182
16	14.538	BV	0.0438	27.74117	9.88109	0.15611
17	14.613	VB	0.0503	11.34358	3.45107	0.06384
18	14.898	BB	0.0516	1840.64587	555.94257	10.35829
19	15.881	BB	0.0587	20.02272	4.79933	0.11268
20	17.203	BB	0.0468	63.60557	20.74927	0.35794
21	17.592	BB	0.0486	81.16572	25.15365	0.45676
22	18.620	BV	0.0483	17.47967	5.61269	0.09837
23	18.734	VB	0.0479	16.63076	5.39928	0.09359
24	18.958	BB	0.0485	60.49872	19.32822	0.34046
25	19.330	BB	0.0548	4806.76611	1199.50183	27.05023
26	19.751	BB	0.0580	99.56889	25.83958	0.56033
27	21.537	BB	0.0513	7.92979	2.35650	0.04463
28	21.836	BV	0.0483	13.52417	4.23050	0.07611
29	21.912	VB	0.0482	8.99049	2.82241	0.05059
30	22.125	BB	0.0464	62.45244	21.20599	0.35145
31	22.612	BB	0.0518	91.53735	27.53282	0.51513
32	23.678	BB	0.0434	5.62257	2.08734	0.03164
33	24.498	BB	0.0448	5.80352	1.94628	0.03266
34	25.562	BB	0.0479	6.54545	2.12962	0.03683
35	25.819	BB	0.0498	22.68953	7.40215	0.12769
36	26.504	BB	0.0495	30.52009	9.76737	0.17175

Totals : 1.77698e4 4989.11397

=====
*** End of Report ***