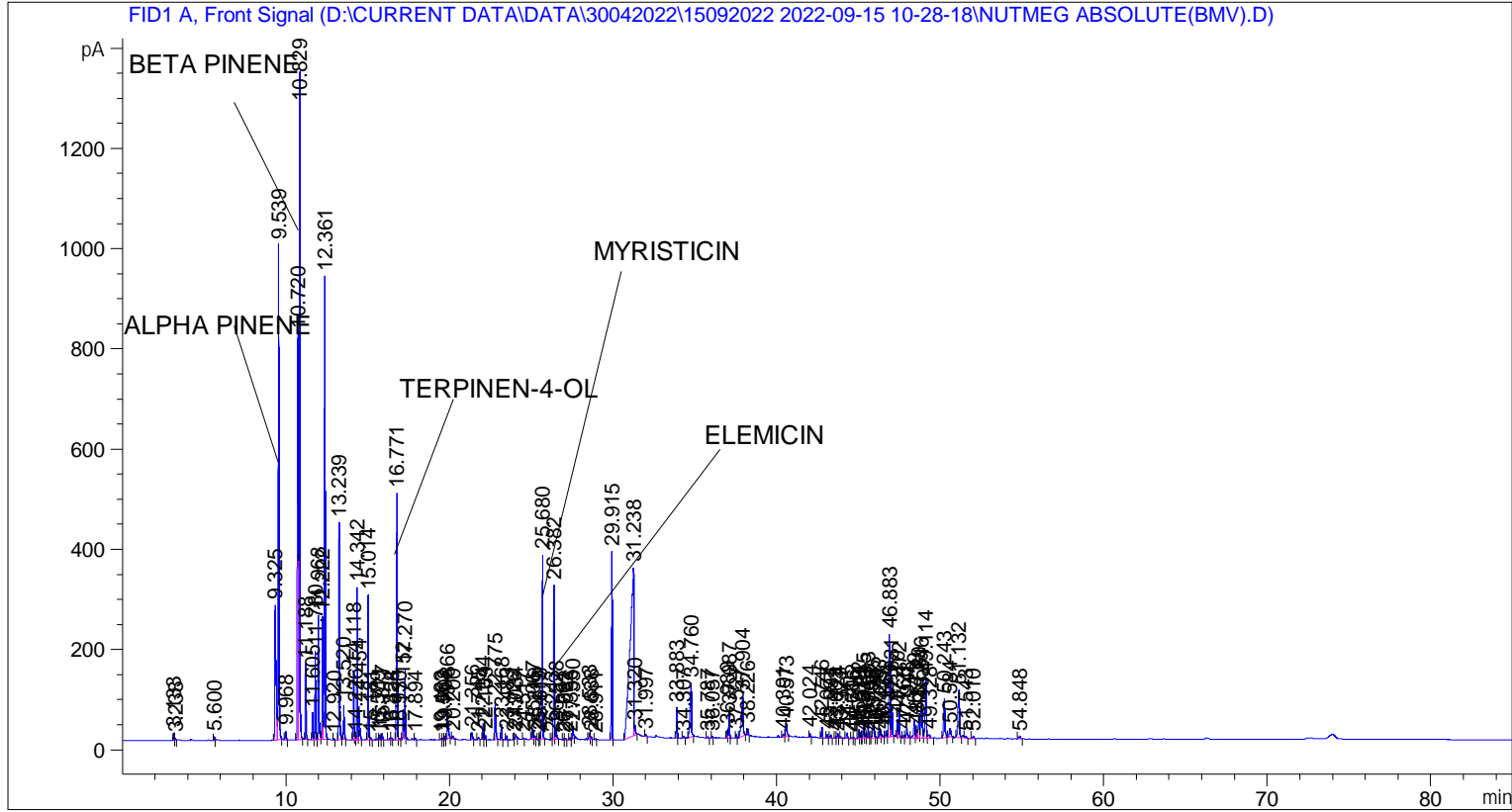


```

=====
Acq. Operator   : SYSTEM                               Seq. Line :    1
Acq. Instrument : BMV_NEW_GC_7820                     Location  : Vial 101
Injection Date  : 15-Sep-22 10:32:48 AM                Inj       :    1
                                                    Inj Volume: 0.5 µl

Acq. Method    : D:\CURRENT DATA\DATA\30042022\15092022 2022-09-15 10-28-18\UNIVERSAL BMV.M
Last changed   : 15-Sep-22 10:28:19 AM by SYSTEM
Analysis Method: C:\CHEM32\2\METHODS\UNIVERSAL BMV.M
Last changed   : 15-Sep-22 10:25:41 AM by SYSTEM
  
```



Area Percent Report

```

Sorted By      : Signal
Multiplier    : 1.0000
Dilution      : 1.0000
Do not use Multiplier & Dilution Factor with ISTDs
  
```

Signal 1: FID1 A, Front Signal

Peak #	RetTime [min]	Type	Width [min]	Area [pA*s]	Height [pA]	Area %
1	3.133	BV	0.0361	35.30315	14.16552	0.08130
2	3.238	VB	0.0426	10.79534	3.63745	0.02486
3	5.600	BB	0.0495	22.58110	6.50882	0.05200
4	9.325	BV	0.0730	1405.13477	268.95090	3.23594
5	9.539	VB	0.0517	3272.92725	986.42548	7.53735
6	9.968	BB	0.0573	67.24269	17.31613	0.15486
7	10.720	BV	0.0731	3683.61646	809.56097	8.48315
8	10.829	VB	0.0472	4468.49805	1328.55750	10.29068
9	11.188	BB	0.0467	461.79062	151.03517	1.06348

Sample Name: NUTMEG ABSOLUTE(BMV)

Peak #	RetTime [min]	Type	Width [min]	Area [pA*s]	Height [pA]	Area %
10	11.605	BB	0.0479	171.19664	54.07024	0.39426
11	11.780	BB	0.0460	527.38635	175.69568	1.21454
12	11.968	BB	0.0519	868.49115	247.65881	2.00008
13	12.222	BV	0.0491	780.06091	245.10005	1.79643
14	12.361	VB	0.0522	3101.96313	922.95398	7.14363
15	12.920	BB	0.0447	5.78496	2.00251	0.01332
16	13.239	BB	0.0502	1418.83569	432.77957	3.26749
17	13.520	BB	0.0488	222.58276	68.78562	0.51259
18	14.118	BV	0.0489	440.40097	139.16008	1.01422
19	14.226	VV	0.0508	27.21216	7.98144	0.06267
20	14.342	VV	0.0460	886.61401	304.01337	2.04182
21	14.454	VB	0.0609	276.16251	65.90554	0.63599
22	15.014	BB	0.0465	851.10150	287.46805	1.96004
23	15.181	BB	0.0533	16.84767	4.64480	0.03880
24	15.579	BV	0.0557	9.80077	2.67774	0.02257
25	15.711	VB	0.0534	34.60350	9.98772	0.07969
26	15.877	BB	0.0508	45.18474	13.58839	0.10406
27	16.354	BV	0.0687	19.31110	4.27180	0.04447
28	16.428	VB	0.0642	20.00811	4.30454	0.04608
29	16.771	BB	0.0474	1582.39539	492.98596	3.64416
30	16.930	BB	0.0538	11.88339	3.39621	0.02737
31	17.152	BV	0.0569	220.58713	58.60115	0.50800
32	17.270	VB	0.0453	403.27094	137.12706	0.92871
33	17.894	BB	0.0528	14.38748	4.01397	0.03313
34	19.462	BV	0.0539	10.90145	3.03307	0.02511
35	19.583	VV	0.0487	11.13717	3.54141	0.02565
36	19.708	VB	0.0467	21.10320	7.10413	0.04860
37	19.866	BB	0.0638	244.06750	53.91217	0.56207
38	20.200	BB	0.0488	19.51455	6.02395	0.04494
39	21.356	BB	0.0639	62.15009	14.81547	0.14313
40	21.745	BB	0.0702	26.21968	5.35240	0.06038
41	22.044	BV	0.0454	94.92669	32.23613	0.21861
42	22.169	VB	0.0484	30.31775	9.44981	0.06982
43	22.775	BB	0.0632	315.27921	76.27563	0.72607
44	23.168	BB	0.0473	97.31737	31.26016	0.22412
45	23.483	BB	0.0460	26.34722	9.04883	0.06068
46	23.926	BV	0.0420	7.06766	2.65922	0.01628
47	24.034	VB	0.0760	52.01551	9.33994	0.11979
48	24.517	BB	0.0391	6.28276	2.70159	0.01447
49	25.067	BB	0.0670	93.19469	21.29847	0.21462
50	25.219	BB	0.0502	27.11609	8.07491	0.06245
51	25.419	BV	0.0437	5.07418	1.92894	0.01169
52	25.510	VV	0.0452	22.09561	8.01173	0.05088
53	25.680	VB	0.0503	1332.76001	367.99185	3.06927
54	26.243	BV	0.0462	10.91768	3.72351	0.02514
55	26.382	VV	0.0468	997.96045	308.30838	2.29824
56	26.528	VB	0.0633	97.62685	21.37788	0.22483
57	26.961	BV	0.0517	6.77307	2.09629	0.01560
58	27.082	VB	0.0606	13.73236	3.50970	0.03162
59	27.356	BB	0.0485	14.18286	4.52981	0.03266
60	27.530	BB	0.0575	97.33824	24.42376	0.22416
61	28.533	BV	0.0662	60.97835	13.11667	0.14043
62	28.638	VB	0.0524	20.31743	5.73009	0.04679
63	28.911	BB	0.0338	3.67730	1.73275	0.00847

Sample Name: NUTMEG ABSOLUTE(BMV)

Peak #	RetTime [min]	Type	Width [min]	Area [pA*s]	Height [pA]	Area %
64	29.915	BB	0.0461	1195.16052	375.69501	2.75238
65	31.238	BV	0.1910	5256.79053	335.06976	12.10607
66	31.320	VB	0.0659	95.93996	20.02139	0.22094
67	31.997	BB	0.0528	15.78688	4.51138	0.03636
68	33.883	BB	0.0496	190.06543	60.54668	0.43771
69	34.307	BB	0.0557	11.93225	3.41693	0.02748
70	34.760	BB	0.0816	679.72797	107.79540	1.56537
71	35.787	BB	0.0632	10.84749	2.62744	0.02498
72	36.057	BB	0.0541	12.77330	3.54309	0.02942
73	36.989	BV	0.0474	54.44946	16.99176	0.12539
74	37.087	VB	0.0507	184.52606	55.63171	0.42495
75	37.527	BB	0.0487	26.93186	8.57041	0.06202
76	37.904	BB	0.0876	541.82538	79.43845	1.24779
77	38.226	BB	0.0520	45.92594	13.05985	0.10576
78	40.391	BV	0.0779	38.36605	6.13992	0.08835
79	40.573	VB	0.0725	125.99786	25.13836	0.29017
80	42.024	BB	0.0519	28.16682	8.44289	0.06487
81	42.746	BB	0.0542	75.38419	21.88456	0.17361
82	43.077	BB	0.0532	25.45606	7.38355	0.05862
83	43.294	BB	0.0556	25.68732	6.71926	0.05916
84	43.603	BV	0.0497	8.36880	2.39654	0.01927
85	43.724	VB	0.0535	32.93484	9.03171	0.07585
86	43.921	BB	0.0522	9.81181	2.84937	0.02260
87	44.305	BB	0.0692	52.14916	10.63525	0.12010
88	44.605	BB	0.0529	9.24535	2.51472	0.02129
89	44.716	BB	0.0447	7.05551	2.30750	0.01625
90	45.012	BV	0.0574	65.83567	18.13326	0.15162
91	45.121	VV	0.0563	45.42398	12.81907	0.10461
92	45.214	VV	0.0513	13.04365	3.60131	0.03004
93	45.315	VV	0.0551	125.01154	35.45160	0.28789
94	45.413	VV	0.0694	37.13311	7.28722	0.08552
95	45.583	VB	0.0484	129.56949	36.55456	0.29839
96	45.755	BV	0.0474	10.22962	3.27622	0.02356
97	45.905	VV	0.0897	194.18735	26.42828	0.44720
98	46.078	VB	0.0697	14.57746	2.71437	0.03357
99	46.283	BV	0.0649	84.78369	19.44815	0.19525
100	46.427	VV	0.0647	31.06294	6.50420	0.07154
101	46.664	VV	0.0633	55.52441	12.38346	0.12787
102	46.883	VV	0.0790	1229.69727	204.99580	2.83192
103	47.031	VB	0.0631	246.23833	60.97666	0.56707
104	47.370	BV	0.0509	125.64214	35.85434	0.28935
105	47.472	VB	0.0525	178.85188	52.84990	0.41189
106	47.766	BV	0.0623	31.10944	6.80992	0.07164
107	47.948	VB	0.0842	116.04959	18.50136	0.26726
108	48.419	BV	0.0855	223.05693	34.91624	0.51369
109	48.573	VV	0.0664	74.48481	16.27113	0.17153
110	48.689	VV	0.0662	214.39537	46.14472	0.49374
111	48.846	VV	0.0834	397.18176	66.80006	0.91469
112	49.114	VV	0.0663	552.50153	118.64942	1.27238
113	49.328	VB	0.0854	48.20963	6.91268	0.11102
114	50.243	BB	0.0804	432.99203	78.39817	0.99715
115	50.584	BB	0.0790	97.32457	16.95308	0.22413
116	51.132	BB	0.0891	584.66833	94.64937	1.34646
117	51.543	BB	0.0791	25.27840	4.14957	0.05821

Sample Name: NUTMEG ABSOLUTE(BMV)

Peak #	RetTime [min]	Type	Width [min]	Area [pA*s]	Height [pA]	Area %
118	52.010	BB	0.0762	25.72921	4.21375	0.05925
119	54.848	BB	0.0927	39.30688	5.41191	0.09052

Totals : 4.34228e4 1.05884e4

=====
*** End of Report ***