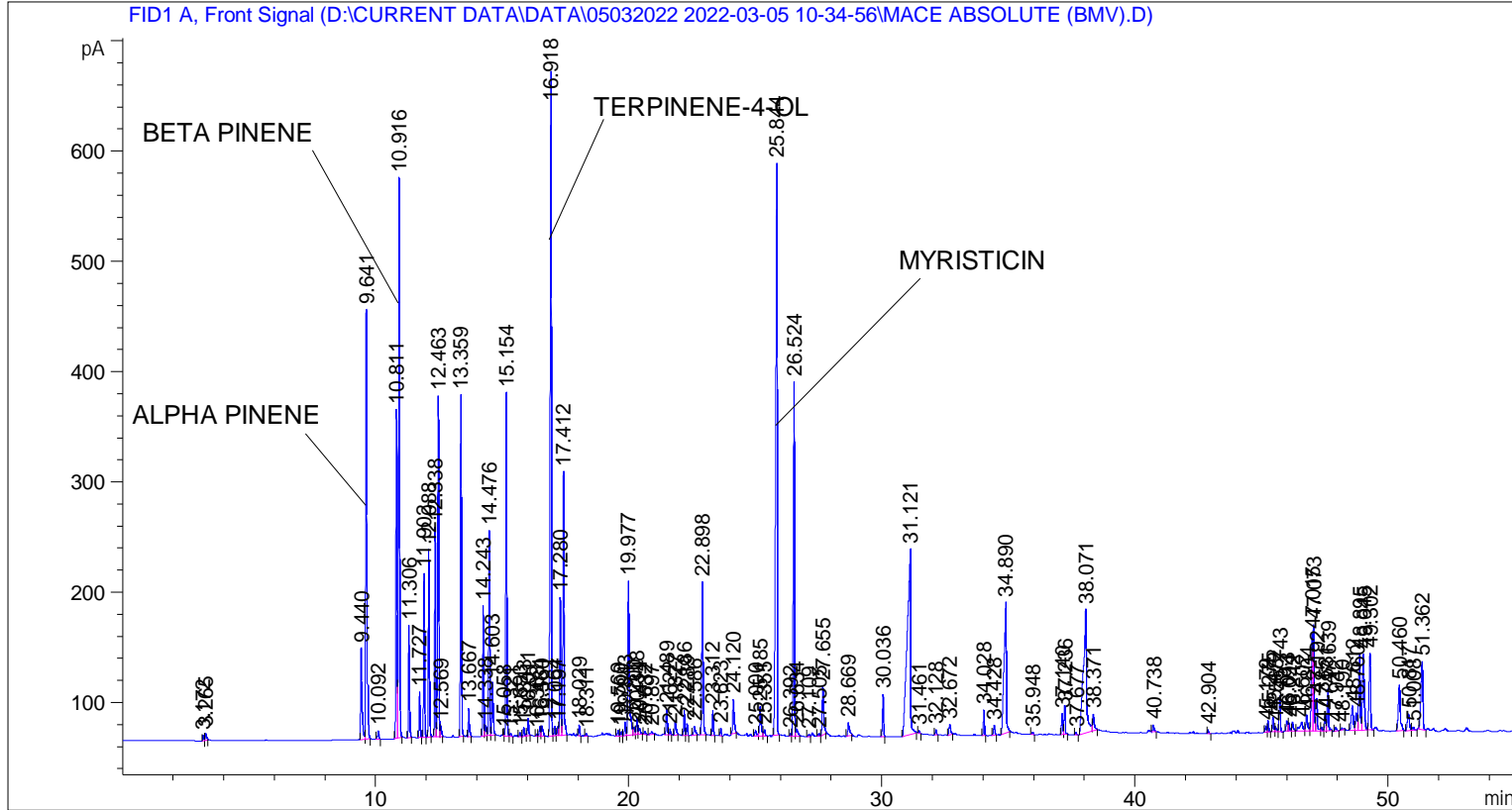


```

=====
Acq. Operator   : SYSTEM                               Seq. Line :    3
Acq. Instrument : BMV_NEW_GC_7820                     Location  : Vial 103
Injection Date  : 05-Mar-22 12:57:19 PM                Inj       :    1
                                                    Inj Volume: 0.5 µl

Acq. Method    : D:\CURRENT DATA\DATA\05032022 2022-03-05 10-34-56\UNIVERSAL BMV.M
Last changed   : 05-Mar-22 10:35:07 AM by SYSTEM
Analysis Method: C:\CHEM32\2\DATA\01042018 2018-04-01 09-29-18\UNIVERSAL F.M (Sequence
Method)
Last changed   : 09-Mar-22 3:14:45 PM by SYSTEM
                (modified after loading)
  
```



Area Percent Report

```

Sorted By      :      Signal
Multiplier     :      1.0000
Dilution      :      1.0000
Do not use Multiplier & Dilution Factor with ISTDs
  
```

Signal 1: FID1 A, Front Signal

Peak #	RetTime [min]	Type	Width [min]	Area [pA*s]	Height [pA]	Area %
1	3.172	BV	0.0365	12.64699	5.00519	0.04878
2	3.265	VB	0.0497	23.31155	6.51792	0.08992
3	9.440	BV	0.0549	312.67889	83.08129	1.20607
4	9.641	VB	0.0481	1203.46191	389.05984	4.64201
5	10.092	BB	0.0583	29.92552	7.53499	0.11543
6	10.811	BV	0.0484	928.99512	298.13956	3.58333
7	10.916	VB	0.0456	1506.63428	507.51102	5.81141

Sample Name: MACE ABSOLUTE (BMV)

Peak #	RetTime [min]	Type	Width [min]	Area [pA*s]	Height [pA]	Area %
8	11.306	BB	0.0448	295.04938	101.95626	1.13807
9	11.727	BB	0.0449	119.86211	41.25772	0.46233
10	11.902	BB	0.0448	431.92871	149.19501	1.66604
11	12.088	BB	0.0451	497.02985	170.13385	1.91715
12	12.338	BV	0.0440	537.12708	189.90422	2.07182
13	12.463	VV	0.0509	1004.86237	309.17462	3.87597
14	12.569	VB	0.0504	32.33006	9.57559	0.12470
15	13.359	BB	0.0443	884.26099	309.56165	3.41079
16	13.667	BB	0.0467	81.37116	25.85540	0.31387
17	14.243	BV	0.0442	336.84259	118.38341	1.29927
18	14.338	VV	0.0542	35.58297	9.82641	0.13725
19	14.476	VV	0.0452	544.42889	185.96152	2.09998
20	14.603	VB	0.0526	167.42125	48.07886	0.64578
21	15.058	BV	0.0385	8.33380	3.41639	0.03215
22	15.154	VB	0.0457	898.07788	310.89847	3.46408
23	15.321	BB	0.0529	9.44002	2.62944	0.03641
24	15.693	BB	0.0511	12.20422	3.73645	0.04707
25	15.843	BB	0.0512	28.07172	8.36130	0.10828
26	16.011	BB	0.0514	53.39653	15.79893	0.20596
27	16.363	BV	0.0471	6.00276	1.94195	0.02315
28	16.484	VV	0.0475	28.73004	8.69942	0.11082
29	16.560	VB	0.0616	40.95092	9.25976	0.15796
30	16.918	BB	0.0503	2025.30688	601.83203	7.81205
31	17.064	BV	0.0479	27.81091	8.79441	0.10727
32	17.197	VV	0.0494	28.31594	8.84155	0.10922
33	17.280	VV	0.0484	401.06870	125.24665	1.54701
34	17.412	VB	0.0458	712.42737	239.17278	2.74799
35	18.029	BB	0.0445	28.33838	9.87911	0.10931
36	18.311	BB	0.0513	7.24324	2.04716	0.02794
37	19.569	BV	0.0559	17.41311	4.84841	0.06717
38	19.700	VV	0.0578	14.27656	3.80530	0.05507
39	19.843	VV	0.0496	39.32475	12.20710	0.15168
40	19.977	VB	0.0598	561.94464	140.07816	2.16754
41	20.200	BV	0.0581	27.86191	7.05720	0.10747
42	20.318	VV	0.0555	52.64129	14.46738	0.20305
43	20.414	VB	0.0609	23.69544	5.42899	0.09140
44	20.632	BB	0.0504	9.82294	3.06359	0.03789
45	20.897	BB	0.0803	16.31844	2.78733	0.06294
46	21.489	BV	0.0556	83.05779	23.29018	0.32037
47	21.622	VB	0.0499	17.16361	5.14388	0.06620
48	21.827	BB	0.0633	53.04010	12.29419	0.20459
49	22.186	BV	0.0466	68.66835	23.15608	0.26487
50	22.289	VB	0.0467	32.09465	10.78482	0.12380
51	22.586	BB	0.0706	37.87991	7.94873	0.14611
52	22.898	BB	0.0532	476.77600	138.35561	1.83903
53	23.312	BB	0.0481	69.25867	23.02192	0.26715
54	23.623	BB	0.0448	19.28780	6.85963	0.07440
55	24.120	BB	0.0615	133.76936	31.54240	0.51598
56	25.000	BB	0.0785	27.85030	4.95823	0.10742
57	25.185	BB	0.0608	118.31496	27.15836	0.45637
58	25.355	BB	0.0564	21.25053	5.57951	0.08197
59	25.844	BB	0.0560	2133.54468	518.63086	8.22954
60	26.392	BV	0.0433	6.73772	2.43046	0.02599
61	26.524	VV	0.0496	1034.71362	321.19125	3.99111

Peak #	RetTime [min]	Type	Width [min]	Area [pA*s]	Height [pA]	Area %
62	26.634	VB	0.0759	34.82668	6.16277	0.13433
63	27.109	BB	0.0499	6.86300	2.11325	0.02647
64	27.505	BB	0.0466	8.41076	2.75437	0.03244
65	27.655	BB	0.0595	182.21306	44.79996	0.70284
66	28.669	BB	0.0675	56.85493	12.16207	0.21930
67	30.036	BB	0.0486	120.97915	38.54400	0.46664
68	31.121	BB	0.1209	1640.49316	167.96634	6.32774
69	31.461	BB	0.0476	7.05203	2.37536	0.02720
70	32.128	BB	0.0513	15.77447	4.80043	0.06085
71	32.672	BB	0.0750	44.53971	9.11686	0.17180
72	34.028	BB	0.0493	71.61405	23.00204	0.27623
73	34.428	BB	0.0567	34.79242	9.07353	0.13420
74	34.890	BB	0.0802	746.68500	118.94926	2.88013
75	35.948	BB	0.0499	7.73240	2.31997	0.02983
76	37.140	BV	0.0506	61.05737	18.93613	0.23551
77	37.236	VB	0.0485	82.51665	25.69818	0.31828
78	37.677	BB	0.0481	8.03600	2.59878	0.03100
79	38.071	BB	0.1132	999.96722	111.93511	3.85709
80	38.371	BB	0.0672	74.27808	15.13696	0.28651
81	40.738	BB	0.0643	26.68514	6.32105	0.10293
82	42.904	BB	0.0524	11.83803	3.50866	0.04566
83	45.179	BV	0.0505	17.58800	5.47719	0.06784
84	45.275	VB	0.0535	35.32518	10.43341	0.13626
85	45.472	BV	0.0539	46.89980	13.70807	0.18090
86	45.568	VV	0.0646	23.04307	5.10655	0.08888
87	45.743	VB	0.0510	112.32515	32.74210	0.43326
88	46.013	BV	0.0520	32.13150	9.37813	0.12394
89	46.094	VV	0.0661	34.00122	7.61594	0.13115
90	46.242	VB	0.0574	30.87552	8.12030	0.11909
91	46.602	BV	0.1117	71.29576	8.02442	0.27500
92	46.804	VV	0.0739	73.78293	14.85773	0.28460
93	47.015	VV	0.0506	305.15094	87.73801	1.17703
94	47.073	VV	0.0490	314.47003	96.44851	1.21298
95	47.192	VB	0.0699	133.14780	29.33807	0.51358
96	47.385	BV	0.0543	12.17873	3.20886	0.04698
97	47.531	VV	0.0558	56.22209	15.67392	0.21686
98	47.639	VB	0.0583	144.10376	37.93638	0.55584
99	47.942	BB	0.0588	14.00064	3.28091	0.05400
100	48.190	BB	0.0503	5.70079	1.83265	0.02199
101	48.612	BV	0.0795	125.69084	22.05628	0.48482
102	48.760	VV	0.0638	68.09988	15.94321	0.26268
103	48.895	VV	0.0680	312.64670	68.86144	1.20595
104	49.045	VB	0.0718	346.14081	68.63367	1.33514
105	49.302	BB	0.0641	310.47839	69.47987	1.19758
106	50.460	BB	0.0765	222.42218	41.49563	0.85793
107	50.817	BV	0.0864	86.80664	15.03312	0.33483
108	51.008	VB	0.0592	11.51683	2.91124	0.04442
109	51.362	BB	0.0760	338.00143	61.58540	1.30374

Totals : 2.59254e4 7067.55578

*** End of Report ***