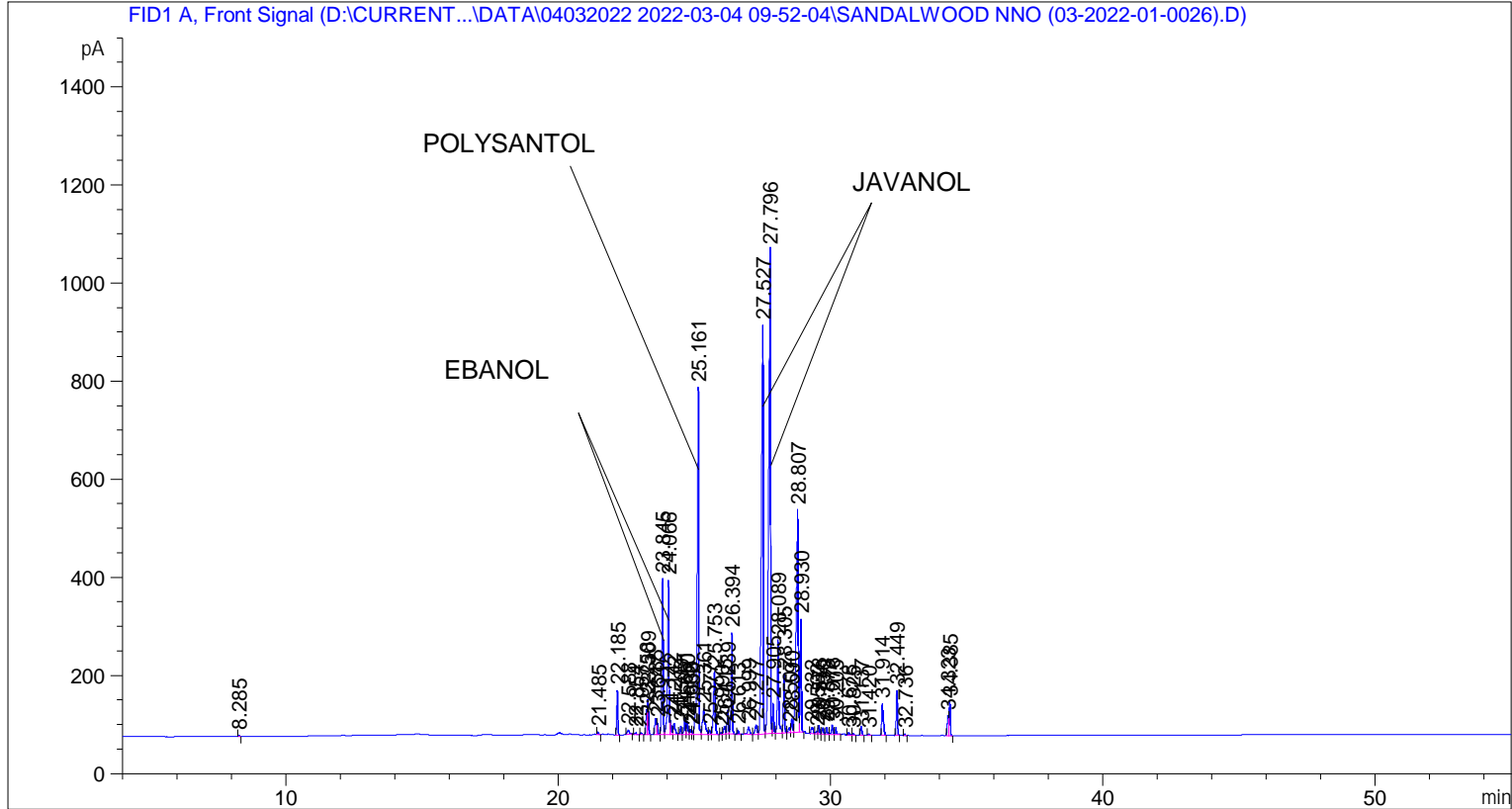


```

=====
Acq. Operator   : SYSTEM                               Seq. Line :    2
Acq. Instrument : BMV_NEW_GC_7820                     Location  : Vial 102
Injection Date  : 04-Mar-22 11:09:04 AM              Inj       :    1
                                                    Inj Volume: 0.5 µl

Acq. Method    : D:\CURRENT DATA\DATA\04032022 2022-03-04 09-52-04\UNIVERSAL BMV.M
Last changed   : 04-Mar-22 9:52:05 AM by SYSTEM
Analysis Method: C:\CHEM32\2\METHODS\COOLING.M
Last changed   : 28-Mar-22 11:09:43 AM by SYSTEM
                (modified after loading)

Additional Info : Peak(s) manually integrated
  
```



=====
 Area Percent Report
 =====

```

Sorted By      :      Signal
Multiplier     :      1.0000
Dilution       :      1.0000
Do not use Multiplier & Dilution Factor with ISTDs
  
```

Signal 1: FID1 A, Front Signal

Peak #	RetTime [min]	Type	Width [min]	Area [pA*s]	Height [pA]	Area %
1	8.285	BB	0.0471	9.05728	3.01280	0.03961
2	21.485	BB	0.0509	14.75823	4.54499	0.06454
3	22.185	BB	0.0456	269.47940	90.77324	1.17839
4	22.588	BB	0.0765	49.56118	8.82839	0.21672
5	22.854	BB	0.0508	11.03370	3.49425	0.04825
6	23.057	BB	0.0472	11.05392	3.55842	0.04834
7	23.258	BV	0.0392	130.74011	50.55578	0.57170

Peak #	RetTime [min]	Type	Width [min]	Area [pA*s]	Height [pA]	Area %
8	23.309	VB	0.0484	230.98343	71.96286	1.01005
9	23.585	BV	0.0492	108.38638	33.10172	0.47395
10	23.647	VB	0.0497	78.77450	24.40807	0.34447
11	23.845	BV	0.0523	1069.37329	317.80908	4.67618
12	24.066	VV	0.0587	1177.77832	314.43292	5.15022
13	24.142	VV	0.0453	86.98744	28.74352	0.38038
14	24.272	VB	0.0698	117.08224	23.63363	0.51198
15	24.509	BV	0.0512	56.65294	16.86944	0.24773
16	24.661	VV	0.0553	115.38595	31.84021	0.50456
17	24.750	VV	0.0551	96.09068	26.03434	0.42019
18	24.863	VV	0.0493	32.24011	9.82445	0.14098
19	24.936	VV	0.0497	26.16054	8.08561	0.11440
20	25.161	VV	0.0564	2871.91382	707.22375	12.55838
21	25.361	VV	0.0804	322.18790	53.36829	1.40887
22	25.577	VV	0.0590	33.61475	8.52609	0.14699
23	25.753	VB	0.0694	589.60657	128.91499	2.57825
24	25.990	BV	0.0448	12.30492	4.37260	0.05381
25	26.115	VV	0.0586	62.92376	16.46702	0.27515
26	26.239	VV	0.0490	152.77499	49.52141	0.66806
27	26.394	VB	0.0503	659.63147	206.07320	2.88445
28	26.613	BB	0.0434	23.16351	8.59638	0.10129
29	26.999	BV	0.0693	79.32484	15.59629	0.34687
30	27.277	VV	0.0708	88.85191	18.90448	0.38853
31	27.527	VV	0.0645	3756.48950	834.39917	16.42648
32	27.796	VV	0.0657	4622.80029	986.01483	20.21470
33	27.905	VV	0.0465	184.28098	60.47852	0.80583
34	28.089	VV	0.0557	695.23877	189.82664	3.04016
35	28.305	VV	0.0474	374.92807	120.31093	1.63950
36	28.507	VV	0.0593	45.05048	10.45197	0.19700
37	28.590	VV	0.0547	93.42507	27.47451	0.40853
38	28.807	VV	0.0729	2446.33838	453.49530	10.69741
39	28.930	VB	0.0466	683.68054	230.56236	2.98962
40	29.332	BV	0.0732	64.23463	12.44183	0.28089
41	29.502	VV	0.0627	20.65580	4.66198	0.09032
42	29.578	VV	0.0573	65.08205	17.12483	0.28459
43	29.730	VV	0.0581	50.05025	12.94594	0.21886
44	29.873	VV	0.0520	49.06545	15.04741	0.21455
45	30.076	VV	0.0558	71.96400	19.17138	0.31469
46	30.205	VB	0.0553	52.76920	14.23324	0.23075
47	30.678	BB	0.0609	19.48040	4.94955	0.08518
48	30.825	BB	0.0536	13.93595	4.10362	0.06094
49	31.137	BB	0.0494	58.12973	18.14967	0.25419
50	31.420	BB	0.0487	8.84869	2.81071	0.03869
51	31.914	BB	0.0561	268.81958	65.25603	1.17550
52	32.449	BB	0.0464	277.96255	91.67377	1.21548
53	32.736	BB	0.0451	8.34743	2.94478	0.03650
54	34.323	BV	0.0434	119.39378	40.49023	0.52209
55	34.385	VB	0.0516	229.65352	69.36838	1.00424

Totals : 2.28685e4 5597.46580

*** End of Report ***