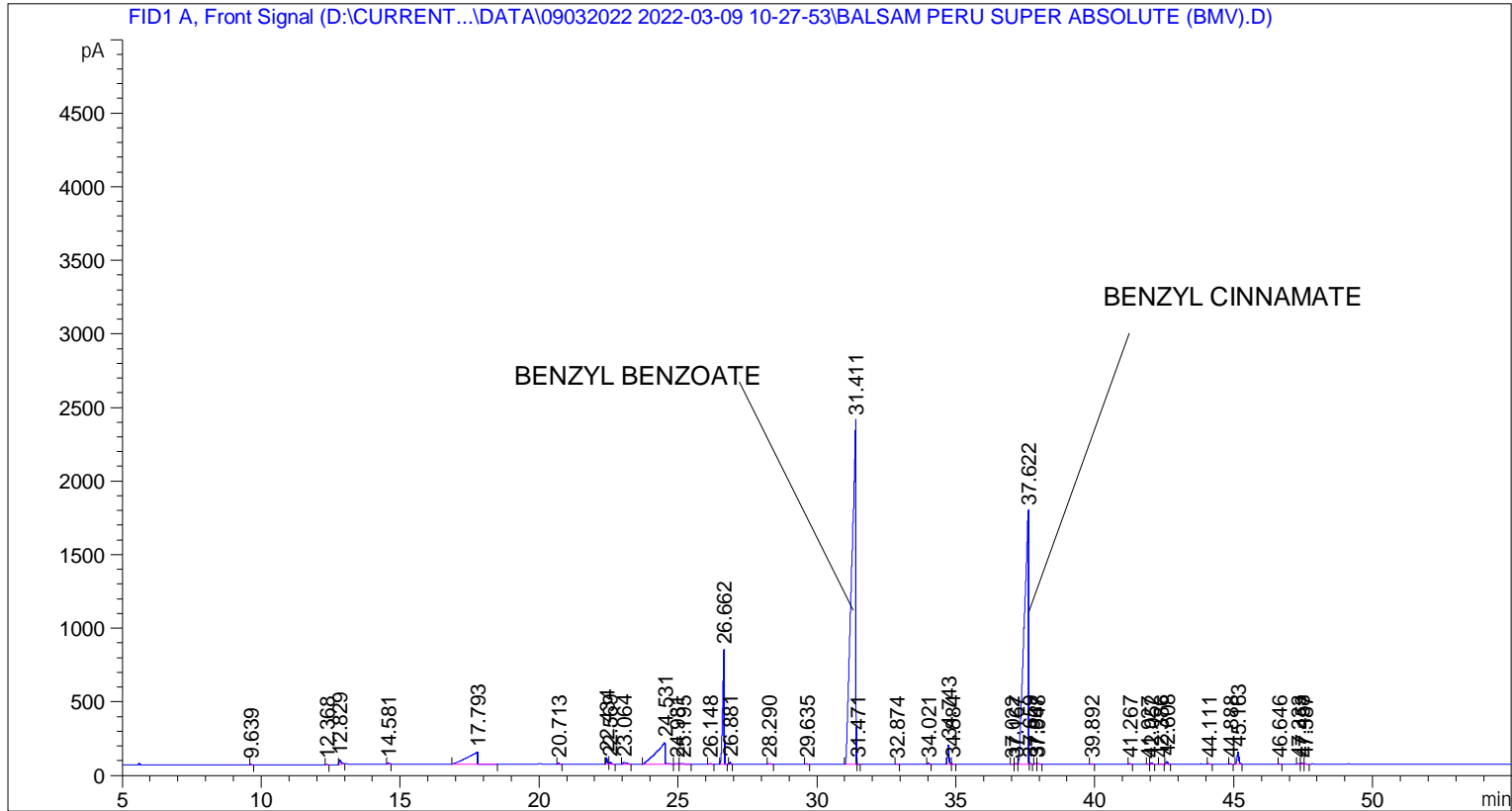


```
=====
Acq. Operator   : SYSTEM                               Seq. Line :    6
Acq. Instrument : BMV_NEW_GC_7820                     Location  : Vial 106
Injection Date  : 09-Mar-22 4:09:53 PM                 Inj       :    1
                                                    Inj Volume: 0.5 µl

Acq. Method     : D:\CURRENT DATA\DATA\09032022 2022-03-09 10-27-53\UNIVERSAL BMV.M
Last changed    : 09-Mar-22 10:28:03 AM by SYSTEM
Analysis Method : C:\CHEM32\2\DATA\01042018 2018-04-01 09-29-18\UNIVERSAL F.M (Sequence
Method)
Last changed    : 09-Mar-22 5:07:11 PM by SYSTEM
                (modified after loading)

Additional Info : Peak(s) manually integrated
=====
```



=====  
 Area Percent Report  
 =====

```
Sorted By      :      Signal
Multiplier     :      1.0000
Dilution       :      1.0000
Do not use Multiplier & Dilution Factor with ISTDs
```

Signal 1: FID1 A, Front Signal

Peak #	RetTime [min]	Type	Width [min]	Area [pA*s]	Height [pA]	Area %
1	9.639	BB	0.0476	13.78747	4.51914	0.02507
2	12.368	BB	0.0425	6.59205	2.52560	0.01199
3	12.829	BB	0.0727	170.37363	32.19615	0.30979
4	14.581	BB	0.0602	39.79350	9.43691	0.07236
5	17.793	BB	0.3213	2263.34009	83.74372	4.11544
6	20.713	BB	0.0547	31.78882	8.89757	0.05780

Sample Name: BALSAM PERU SUPER ABSOLUTE (BMV)

Peak #	RetTime [min]	Type	Width [min]	Area [pA*s]	Height [pA]	Area %
7	22.434	BV	0.0543	173.80731	47.91494	0.31603
8	22.569	VB	0.0847	77.17656	12.56649	0.14033
9	23.064	BB	0.1181	107.39391	11.59006	0.19527
10	24.531	BV	0.2781	3377.77759	146.42287	6.14183
11	24.981	VV	0.0997	43.13512	5.94192	0.07843
12	25.195	VB	0.1235	51.03392	5.59210	0.09280
13	26.148	BB	0.0820	24.53841	3.92251	0.04462
14	26.662	BB	0.0552	3081.16968	778.01447	5.60251
15	26.881	BB	0.0426	42.09769	15.06441	0.07655
16	28.290	BB	0.0763	39.31832	7.24289	0.07149
17	29.635	BB	0.0525	16.53252	4.53703	0.03006
18	31.411	BV	0.1362	2.54558e4	2334.01440	46.28641
19	31.471	VB	0.0373	10.37782	4.27341	0.01887
20	32.874	BB	0.0559	12.44109	3.23038	0.02262
21	34.021	BB	0.0471	33.06134	10.98363	0.06012
22	34.743	BV	0.0532	480.18387	135.98924	0.87312
23	34.884	VB	0.0554	23.32405	6.26569	0.04241
24	37.022	BV	0.0583	13.30592	3.35332	0.02419
25	37.167	VV	0.0754	34.51054	6.89159	0.06275
26	37.622	VV	0.1321	1.86223e4	1722.62793	33.86109
27	37.659	VB	0.0399	25.85207	8.64261	0.04701
28	37.867	BV	0.0479	17.47454	5.10436	0.03177
29	37.948	VB	0.0876	28.46952	4.17371	0.05177
30	39.892	BB	0.0548	13.23956	3.52753	0.02407
31	41.267	BB	0.0529	23.22506	6.96272	0.04223
32	41.927	BV	0.0491	7.15282	2.19224	0.01301
33	42.052	VB	0.0600	40.93232	9.75275	0.07443
34	42.386	BB	0.0646	13.86605	3.26224	0.02521
35	42.608	BB	0.0696	84.96830	19.21165	0.15450
36	44.111	BB	0.0575	20.52859	5.38489	0.03733
37	44.888	BB	0.0526	22.11304	6.68679	0.04021
38	45.163	BB	0.0705	363.07895	80.65996	0.66019
39	46.646	BB	0.0524	10.11006	2.99678	0.01838
40	47.333	BV	0.0587	16.83265	3.95403	0.03061
41	47.458	VV	0.0787	43.19216	8.03629	0.07854
42	47.587	VB	0.0613	20.24154	4.89256	0.03681

Totals : 5.49963e4 5583.19947

=====  
 \*\*\* End of Report \*\*\*