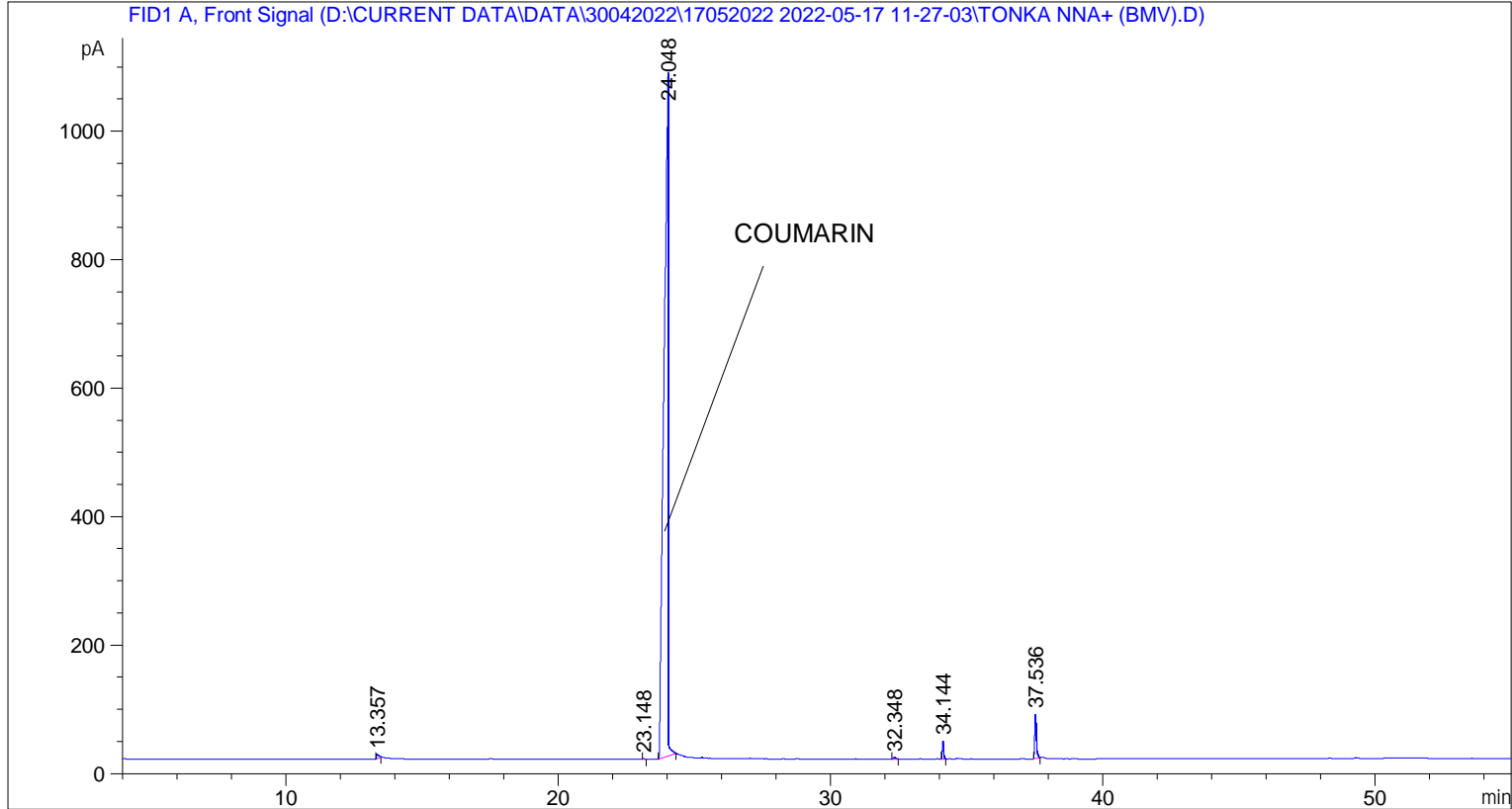


=====
Acq. Operator : SYSTEM Seq. Line : 5
Acq. Instrument : BMV_NEW_GC_7820 Location : Vial 105
Injection Date : 17-May-22 4:06:59 PM Inj : 1
Inj Volume : 0.5 µl
Acq. Method : D:\CURRENT DATA\DATA\30042022\17052022 2022-05-17 11-27-03\UNIVERSAL BMV.M
Last changed : 17-May-22 11:27:03 AM by SYSTEM
Analysis Method : C:\CHEM32\2\METHODS\COOLING.M
Last changed : 24-May-22 9:49:18 AM by SYSTEM
(modified after loading)
Additional Info : Peak(s) manually integrated



=====
Area Percent Report
=====

Sorted By : Signal
Multiplier : 1.0000
Dilution : 1.0000
Do not use Multiplier & Dilution Factor with ISTDs

Signal 1: FID1 A, Front Signal

Peak #	RetTime [min]	Type	Width [min]	Area [pA*s]	Height [pA]	Area %
1	13.357	BB	0.0739	41.77935	7.51101	0.35456
2	23.148	BB	0.0520	5.52897	1.61145	0.04692
3	24.048	BB	0.1308	1.13247e4	1058.43005	96.10791
4	32.348	BB	0.0776	15.16928	2.82559	0.12874
5	34.144	BB	0.0504	96.33084	28.52901	0.81752
6	37.536	BB	0.0657	299.80826	68.99452	2.54435

Totals : 1.17833e4 1167.90164

=====

*** End of Report ***