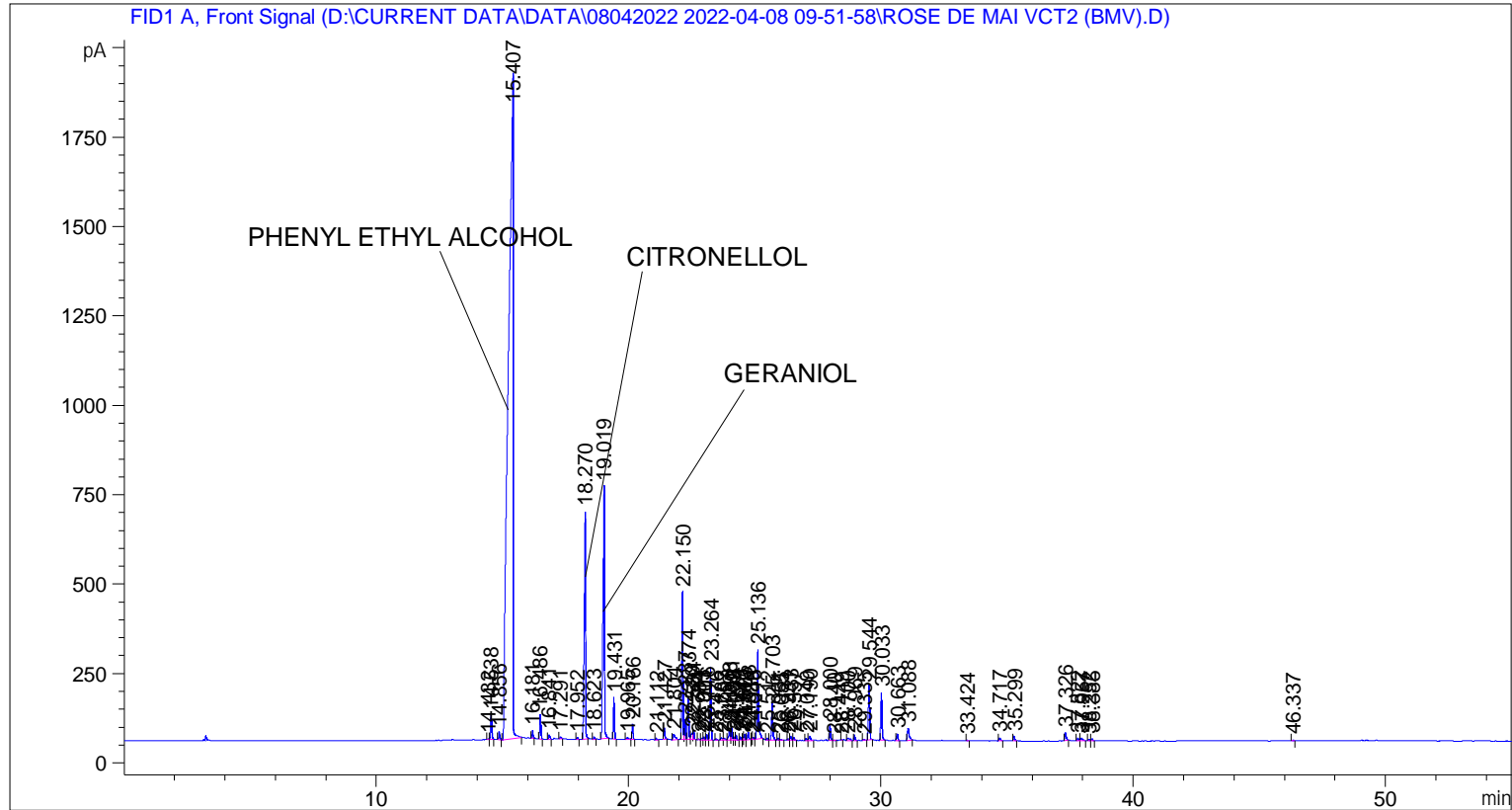


```

=====
Acq. Operator   : SYSTEM                               Seq. Line :    1
Acq. Instrument : BMV_NEW_GC_7820                     Location  : Vial 101
Injection Date  : 08-Apr-22 10:02:53 AM              Inj       :    1
                                                    Inj Volume: 0.5 µl

Acq. Method     : D:\CURRENT DATA\DATA\08042022 2022-04-08 09-51-58\UNIVERSAL BMV.M
Last changed    : 08-Apr-22 9:52:10 AM by SYSTEM
Analysis Method : C:\CHEM32\2\METHODS\COOLING.M
Last changed    : 12-Apr-22 1:45:56 PM by SYSTEM
                  (modified after loading)

Additional Info : Peak(s) manually integrated
  
```



Area Percent Report

```

Sorted By      : Signal
Multiplier     : 1.0000
Dilution      : 1.0000
Do not use Multiplier & Dilution Factor with ISTDs
  
```

Signal 1: FID1 A, Front Signal

Peak #	RetTime [min]	Type	Width [min]	Area [pA*s]	Height [pA]	Area %
1	14.432	BV	0.0481	6.02464	2.00191	0.01603
2	14.538	VB	0.0477	219.22682	69.60931	0.58336
3	14.856	BB	0.0480	67.33652	21.79901	0.17918
4	15.407	BB	0.1573	2.42689e4	1859.51685	64.57894
5	16.181	BB	0.0450	64.94096	22.25517	0.17281
6	16.486	BB	0.0448	205.02649	68.74586	0.54557
7	16.841	BB	0.0536	43.51880	12.19440	0.11580

Peak #	RetTime [min]	Type	Width [min]	Area [pA*s]	Height [pA]	Area %
8	17.291	BB	0.0610	22.91840	5.34508	0.06099
9	17.952	BB	0.0448	18.97059	6.53880	0.05048
10	18.270	BB	0.0574	2423.97046	637.04626	6.45011
11	18.623	BB	0.0503	21.79053	6.47602	0.05798
12	19.019	BB	0.0576	2938.94751	705.37366	7.82045
13	19.431	BB	0.0455	344.36969	116.46333	0.91636
14	19.965	BB	0.0847	31.61514	5.00709	0.08413
15	20.166	BB	0.0460	126.79211	42.27314	0.33739
16	21.112	BB	0.0425	10.73645	3.97105	0.02857
17	21.427	BB	0.0485	100.90278	31.42625	0.26850
18	21.804	BB	0.0789	83.02811	15.15730	0.22094
19	22.150	BV	0.0507	1298.14685	413.15186	3.45433
20	22.237	VV	0.0449	165.47748	56.88440	0.44033
21	22.374	VV	0.0481	358.91327	119.23537	0.95506
22	22.520	VV	0.0621	80.26482	18.31525	0.21358
23	22.584	VB	0.0503	90.75990	26.96843	0.24151
24	22.784	BV	0.0497	6.13963	2.00455	0.01634
25	22.913	VV	0.0524	21.29622	6.30597	0.05667
26	23.001	VV	0.0486	24.67793	7.86373	0.06567
27	23.116	VV	0.0477	48.06224	15.27508	0.12789
28	23.264	VB	0.0481	630.62195	204.05289	1.67807
29	23.476	BB	0.0532	13.23405	3.93584	0.03522
30	23.683	BV	0.0718	33.99810	6.63299	0.09047
31	23.797	VV	0.0626	28.38509	6.29613	0.07553
32	24.008	VV	0.0549	107.34410	27.90108	0.28564
33	24.091	VV	0.0490	119.45535	37.69293	0.31787
34	24.186	VV	0.0483	31.42027	9.81850	0.08361
35	24.271	VB	0.0496	47.26586	14.65442	0.12577
36	24.445	BV	0.0462	25.98494	8.85808	0.06915
37	24.540	VV	0.0420	19.96418	7.52461	0.05312
38	24.605	VV	0.0491	46.03241	14.86080	0.12249
39	24.748	VV	0.0515	72.31858	20.85738	0.19244
40	24.889	VV	0.0377	11.40165	4.47642	0.03034
41	24.946	VV	0.0455	16.09202	5.44510	0.04282
42	25.136	VB	0.0567	954.19128	248.95573	2.53908
43	25.512	BV	0.0438	15.28518	5.44365	0.04067
44	25.703	VB	0.0513	351.92603	104.41753	0.93646
45	25.931	BV	0.0448	14.49398	5.16264	0.03857
46	26.055	VB	0.0507	8.86725	2.60730	0.02360
47	26.331	BV	0.0458	10.30281	3.55680	0.02742
48	26.433	VV	0.0469	35.67751	11.27282	0.09494
49	26.557	VB	0.0452	22.85719	8.04085	0.06082
50	27.049	BV	0.0505	19.04149	5.93077	0.05067
51	27.190	VB	0.0687	52.25045	11.14697	0.13904
52	28.000	BB	0.0491	134.88426	43.55836	0.35892
53	28.140	BB	0.0410	4.32184	1.86859	0.01150
54	28.449	BV	0.0420	5.37807	1.95773	0.01431
55	28.700	BB	0.0903	45.67870	6.88984	0.12155
56	28.969	BB	0.0523	52.20222	15.88439	0.13891
57	29.335	BB	0.0522	9.23236	2.74475	0.02457
58	29.544	BB	0.0561	565.31818	153.17549	1.50430
59	30.033	BB	0.0530	453.35678	132.33652	1.20637
60	30.663	BB	0.0537	66.12016	18.93440	0.17594
61	31.088	BB	0.0746	170.70384	34.00016	0.45424

Peak #	RetTime [min]	Type	Width [min]	Area [pA*s]	Height [pA]	Area %
62	33.424	BB	0.0389	4.95711	2.07106	0.01319
63	34.717	BB	0.0547	33.09167	8.64049	0.08806
64	35.299	BB	0.0544	47.68551	13.43975	0.12689
65	37.326	BB	0.0609	94.62110	23.04157	0.25178
66	37.822	BV	0.0589	26.93914	6.99655	0.07168
67	37.957	VB	0.0774	43.86940	7.37997	0.11674
68	38.252	BV	0.0512	11.86379	3.62796	0.03157
69	38.385	VB	0.0538	21.57096	6.02655	0.05740
70	46.337	BB	0.0523	7.26865	2.15688	0.01934

Totals : 3.75803e4 5561.47836

=====
*** End of Report ***