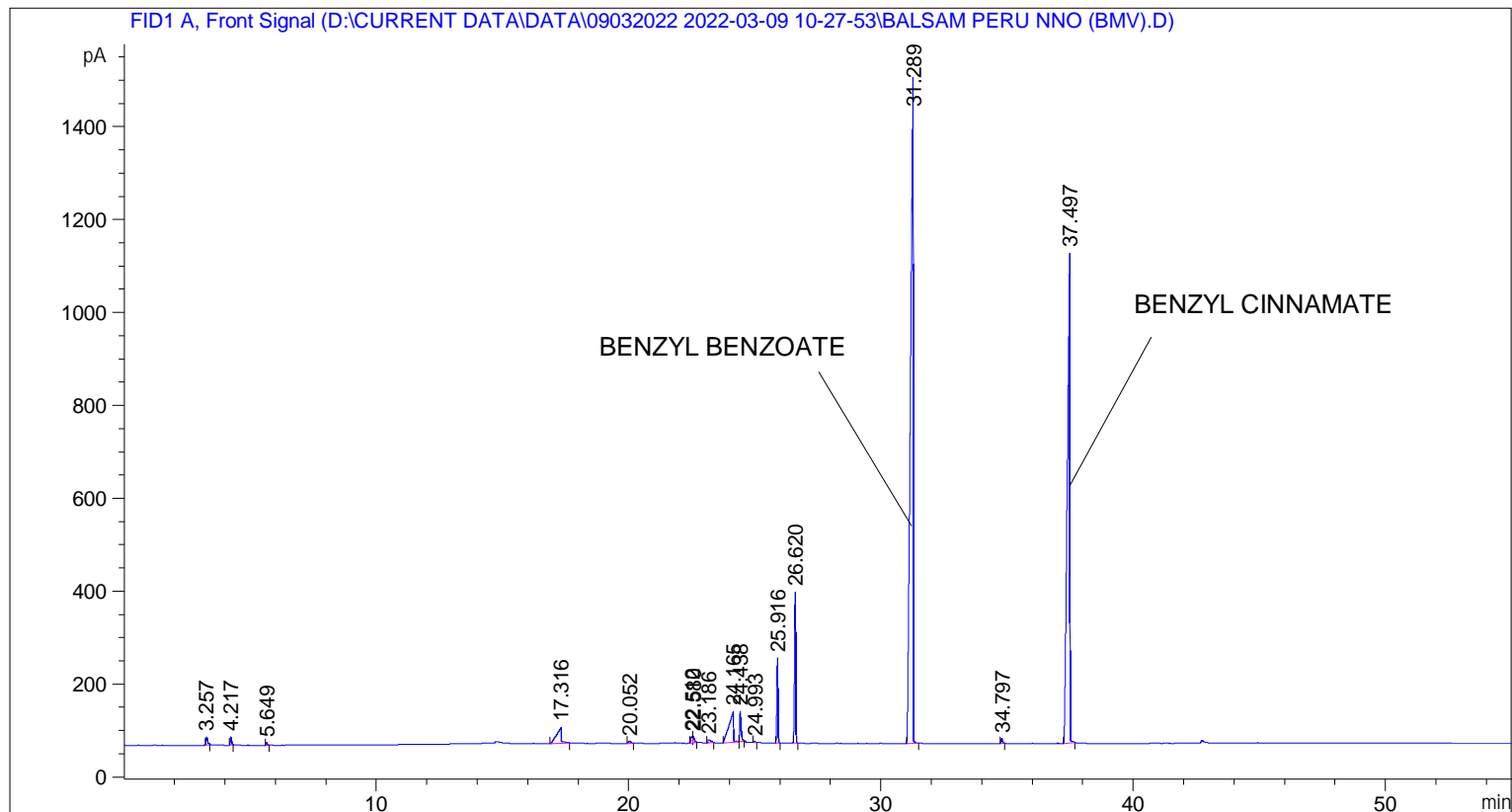


```
=====
Acq. Operator   : SYSTEM                               Seq. Line :    2
Acq. Instrument : BMV_NEW_GC_7820                     Location  : Vial 102
Injection Date  : 09-Mar-22 11:44:59 AM                Inj       :    1
                                                    Inj Volume: 0.5 µl

Acq. Method     : D:\CURRENT DATA\DATA\09032022 2022-03-09 10-27-53\UNIVERSAL.BMV.M
Last changed    : 09-Mar-22 10:28:03 AM by SYSTEM
Analysis Method : C:\CHEM32\2\DATA\01032016 2016-03-01 08-36-52\UNIVERSAL.M (Sequence Method)
Last changed    : 01-Mar-16 8:36:54 AM by SYSTEM
=====
```



=====
 Area Percent Report
 =====

```
Sorted By      : Signal
Multiplier    : 1.0000
Dilution      : 1.0000
Do not use Multiplier & Dilution Factor with ISTDs
```

Signal 1: FID1 A, Front Signal

Peak #	RetTime [min]	Type	Width [min]	Area [pA*s]	Height [pA]	Area %
1	3.257	BB	0.0540	70.11568	18.57662	0.32413
2	4.217	BB	0.0461	56.05509	17.61757	0.25913
3	5.649	BB	0.0568	22.82444	5.93882	0.10551
4	17.316	BB	0.1717	480.17456	34.21854	2.21976
5	20.052	BB	0.0899	31.28540	4.20055	0.14463
6	22.512	BV	0.0573	50.25452	13.54002	0.23232
7	22.580	VB	0.0689	61.14635	12.98620	0.28267
8	23.186	BB	0.0996	53.47504	7.11804	0.24721
9	24.165	BV	0.1574	856.65521	66.44922	3.96017

Peak #	RetTime [min]	Type	Width [min]	Area [pA*s]	Height [pA]	Area %
10	24.438	VB	0.0551	247.39000	65.42532	1.14364
11	24.993	BB	0.0506	12.78976	3.67580	0.05912
12	25.916	BB	0.0469	549.69086	183.59021	2.54112
13	26.620	BB	0.0488	1057.94153	326.12607	4.89068
14	31.289	BB	0.0969	1.05450e4	1415.06677	48.74792
15	34.797	BB	0.0630	45.87203	10.70240	0.21206
16	37.497	BB	0.0888	7491.07520	1054.88440	34.62993

Totals : 2.16318e4 3240.11654

=====
*** End of Report ***