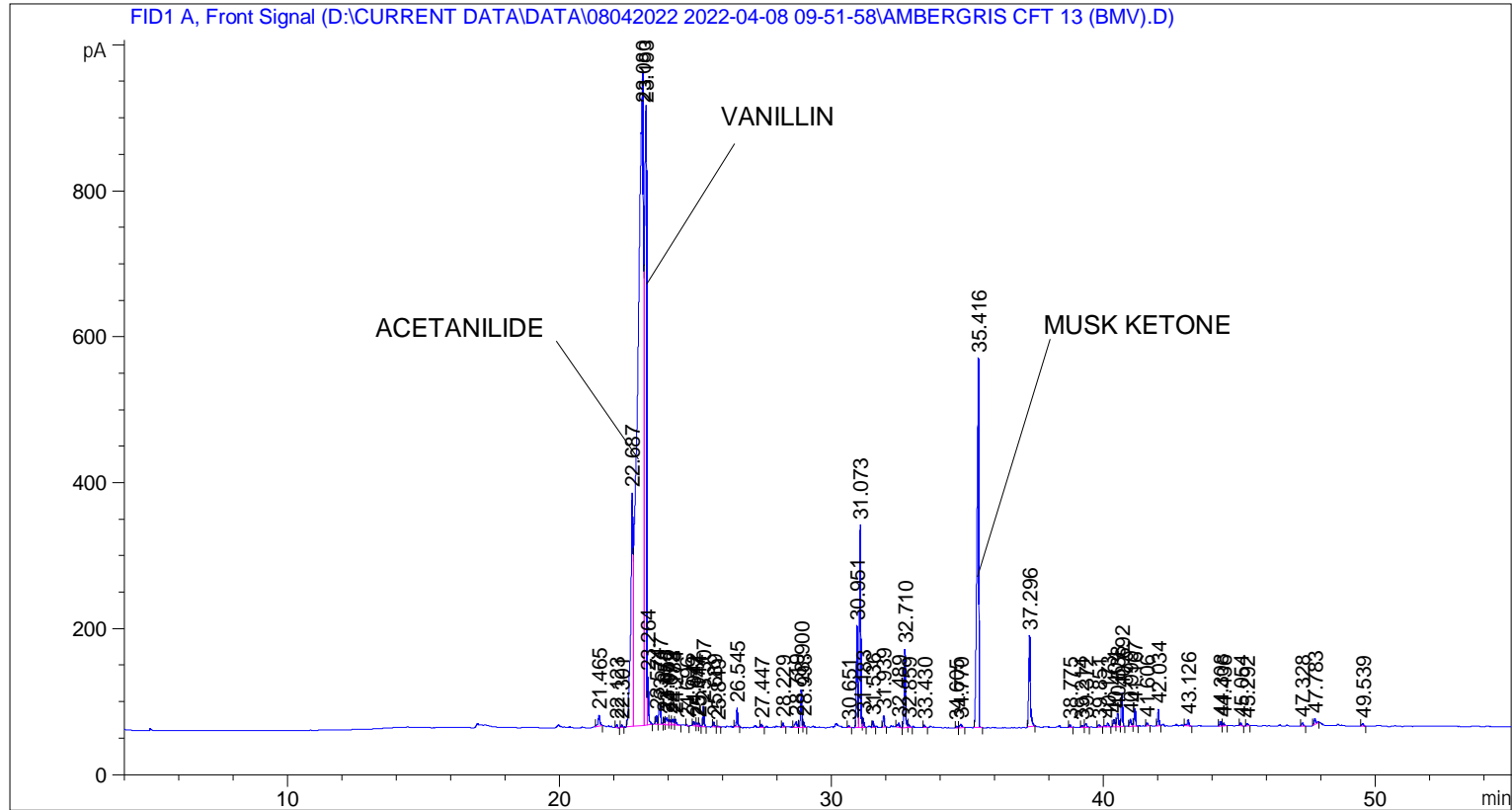


```

=====
Acq. Operator   : SYSTEM                               Seq. Line :    6
Acq. Instrument : BMV_NEW_GC_7820                     Location  : Vial 106
Injection Date  : 08-Apr-22 3:34:32 PM                Inj       :    1
                                                    Inj Volume: 0.5 µl

Acq. Method    : D:\CURRENT DATA\DATA\08042022 2022-04-08 09-51-58\UNIVERSAL BMV.M
Last changed   : 08-Apr-22 9:52:10 AM by SYSTEM
Analysis Method: C:\CHEM32\2\METHODS\COOLING.M
Last changed   : 18-Apr-22 3:01:24 PM by SYSTEM
                (modified after loading)

Additional Info : Peak(s) manually integrated
  
```



=====  
 Area Percent Report  
 =====

```

Sorted By      :      Signal
Multiplier     :      1.0000
Dilution       :      1.0000
Do not use Multiplier & Dilution Factor with ISTDs
  
```

Signal 1: FID1 A, Front Signal

Peak #	RetTime [min]	Type	Width [min]	Area [pA*s]	Height [pA]	Area %
1	21.465	BB	0.0689	70.92471	14.80527	0.27087
2	22.123	BB	0.0493	13.29915	4.27967	0.05079
3	22.301	BB	0.0457	9.42977	3.26363	0.03601
4	22.687	BV	0.0815	1879.81445	320.32443	7.17930
5	23.080	VV	0.1726	1.26509e4	891.29645	48.31555
6	23.193	VV	0.0818	4784.04443	848.19537	18.27100
7	23.264	VB	0.0504	221.90482	65.63359	0.84749

Peak #	RetTime [min]	Type	Width [min]	Area [pA*s]	Height [pA]	Area %
8	23.574	BV	0.0499	39.53068	12.49126	0.15097
9	23.717	VV	0.0680	128.94040	25.95657	0.49244
10	23.858	VV	0.0464	25.92031	8.78078	0.09899
11	23.950	VV	0.0718	48.60173	9.03055	0.18562
12	24.072	VV	0.0664	33.46485	7.17309	0.12781
13	24.183	VV	0.0576	32.93687	8.24721	0.12579
14	24.274	VB	0.0602	35.12663	8.16936	0.13415
15	24.696	BB	0.0324	3.25572	1.77882	0.01243
16	24.942	BB	0.0592	26.52808	6.28419	0.10131
17	25.077	BV	0.0511	15.85299	4.39746	0.06055
18	25.144	VB	0.0514	16.34003	4.71699	0.06241
19	25.307	BB	0.0484	86.94720	27.85958	0.33206
20	25.689	BB	0.0533	23.45839	6.79665	0.08959
21	25.849	BB	0.0405	3.59092	1.47143	0.01371
22	26.545	BB	0.0471	76.91882	25.53501	0.29376
23	27.447	BB	0.0457	12.81544	4.30308	0.04894
24	28.229	BB	0.0486	17.18914	5.33999	0.06565
25	28.719	BV	0.0745	38.59589	7.31678	0.14740
26	28.900	VV	0.0493	164.82291	51.51320	0.62948
27	28.993	VB	0.0467	21.94189	7.17147	0.08380
28	30.651	BB	0.0517	8.82286	2.46622	0.03370
29	30.951	BV	0.0502	443.98364	139.11346	1.69564
30	31.073	VV	0.0491	903.11926	276.64008	3.44915
31	31.183	VB	0.0544	44.47256	12.52778	0.16985
32	31.536	BB	0.0486	26.61831	8.47740	0.10166
33	31.939	BB	0.0503	55.54710	16.09564	0.21214
34	32.489	BV	0.0698	28.82262	5.81373	0.11008
35	32.710	VV	0.0555	401.50034	107.75718	1.53339
36	32.859	VB	0.0554	13.86020	4.00231	0.05293
37	33.430	BB	0.0574	12.51222	3.36003	0.04779
38	34.605	BV	0.0504	6.13956	1.96571	0.02345
39	34.770	VB	0.0768	24.18118	4.49067	0.09235
40	35.416	BB	0.0632	2438.55420	506.48502	9.31321
41	37.296	BB	0.0633	518.20654	125.12082	1.97911
42	38.775	BB	0.0514	11.45803	3.57715	0.04376
43	39.214	BB	0.0636	10.67737	2.32445	0.04078
44	39.372	BB	0.0712	22.69714	4.71275	0.08668
45	39.851	BB	0.0670	15.75743	3.53230	0.06018
46	40.173	BB	0.0761	28.51481	4.88435	0.10890
47	40.404	BV	0.0594	42.52570	10.25188	0.16241
48	40.538	VV	0.0755	88.97976	18.06477	0.33983
49	40.692	VB	0.0535	156.70023	45.14793	0.59846
50	40.999	BV	0.0653	42.85704	9.56003	0.16368
51	41.167	VB	0.0575	92.03340	24.70296	0.35149
52	41.606	BB	0.0594	18.64042	4.68234	0.07119
53	42.034	BB	0.0513	75.90973	23.12774	0.28991
54	43.126	BB	0.0641	38.77119	8.68116	0.14807
55	44.308	BV	0.0527	20.30123	6.12455	0.07753
56	44.436	VB	0.0499	11.61548	3.57911	0.04436
57	45.054	BB	0.0537	15.31430	4.17978	0.05849
58	45.292	BB	0.0590	13.15682	3.19465	0.05025
59	47.328	BB	0.0572	17.19552	4.53873	0.06567
60	47.783	BB	0.0609	35.37212	8.26334	0.13509
61	49.539	BB	0.0661	15.94379	3.37694	0.06089

Sample Name: AMBERGRIS CFT 13 (BMV)

Peak #	RetTime [min]	Type	Width [min]	Area [pA*s]	Height [pA]	Area %
Totals :						
				2.61838e4	3792.95485	

=====  
\*\*\* End of Report \*\*\*