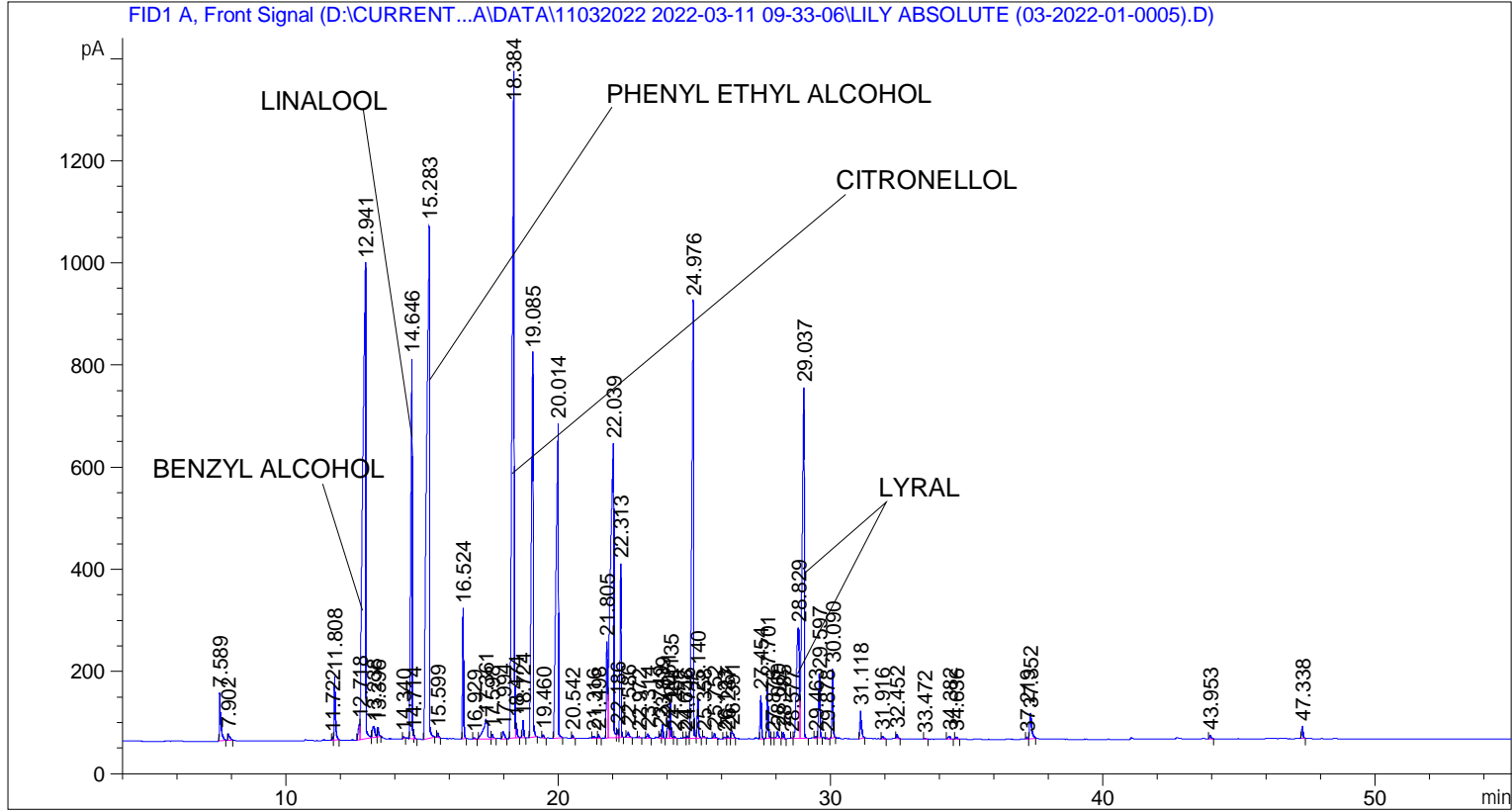


```

=====
Acq. Operator   : SYSTEM                               Seq. Line :    2
Acq. Instrument : BMV_NEW_GC_7820                     Location  : Vial 102
Injection Date  : 11-Mar-22 10:49:46 AM              Inj       :    1
                                                    Inj Volume: 0.5 µl

Acq. Method    : D:\CURRENT DATA\DATA\11032022 2022-03-11 09-33-06\UNIVERSAL BMV.M
Last changed   : 11-Mar-22 9:33:17 AM by SYSTEM
Analysis Method: C:\CHEM32\2\METHODS\COOLING.M
Last changed   : 19-Apr-22 4:20:58 PM by SYSTEM
                (modified after loading)

Additional Info : Peak(s) manually integrated
  
```



=====
 Area Percent Report
 =====

```

Sorted By      : Signal
Multiplier     : 1.0000
Dilution      : 1.0000
Do not use Multiplier & Dilution Factor with ISTDs
  
```

Signal 1: FID1 A, Front Signal

Peak #	RetTime [min]	Type	Width [min]	Area [pA*s]	Height [pA]	Area %
1	7.589	BB	0.0508	343.15744	93.53815	0.65375
2	7.902	BB	0.0638	60.76390	12.94219	0.11576
3	11.722	BV	0.0395	17.48607	6.69366	0.03331
4	11.808	VB	0.0470	397.70230	125.31646	0.75766
5	12.718	BV	0.0679	117.40524	31.19296	0.22367
6	12.941	VB	0.0932	7027.53125	929.80347	13.38814
7	13.238	BV	0.0841	132.68095	21.77693	0.25277

Peak #	RetTime [min]	Type	Width [min]	Area [pA*s]	Height [pA]	Area %
8	13.396	VB	0.0564	67.82044	18.64985	0.12920
9	14.340	BB	0.0413	10.44715	3.65673	0.01990
10	14.646	BV	0.0575	2907.71655	745.37415	5.53949
11	14.714	VB	0.0441	24.99391	8.55976	0.04762
12	15.283	BB	0.0858	7051.36426	1005.98169	13.43355
13	15.599	BB	0.0453	29.06507	10.17855	0.05537
14	16.524	BB	0.0433	706.53021	255.09250	1.34601
15	16.929	BB	0.0567	12.13715	3.31708	0.02312
16	17.361	BV	0.1418	421.38864	38.17149	0.80279
17	17.598	VB	0.0546	35.33929	9.46023	0.06732
18	17.994	BB	0.0722	71.11864	14.24708	0.13549
19	18.384	BV	0.0690	6943.69580	1305.91309	13.22843
20	18.474	VB	0.0472	92.74429	29.10780	0.17669
21	18.724	BB	0.0454	100.79467	33.19372	0.19202
22	19.085	BB	0.0619	3404.23730	750.81769	6.48541
23	19.460	BB	0.0480	21.17209	6.50473	0.04033
24	20.014	BB	0.0745	3615.19971	615.58765	6.88731
25	20.542	BB	0.0512	20.35698	6.06504	0.03878
26	21.316	BB	0.0758	18.91438	3.75541	0.03603
27	21.498	BB	0.0500	24.11934	7.40222	0.04595
28	21.805	BV	0.0465	574.09778	188.65053	1.09371
29	22.039	VV	0.0991	4592.04688	575.38391	8.74830
30	22.186	VV	0.0534	55.39853	15.24232	0.10554
31	22.313	VB	0.0454	1003.41321	340.38657	1.91160
32	22.586	BB	0.0676	49.46764	10.38237	0.09424
33	22.972	BB	0.0450	6.15067	2.24259	0.01172
34	23.314	BB	0.0666	40.43122	8.64329	0.07703
35	23.749	BV	0.0453	24.04092	8.17051	0.04580
36	23.839	VB	0.0510	92.91825	27.76107	0.17702
37	24.051	BV	0.0550	126.08671	34.22824	0.24021
38	24.135	VB	0.0489	227.48639	71.85448	0.43338
39	24.284	BB	0.0598	18.34622	4.47703	0.03495
40	24.658	BV	0.0509	7.41126	2.40801	0.01412
41	24.746	VV	0.0506	17.33360	5.37365	0.03302
42	24.976	VV	0.0614	3993.95581	855.96283	7.60888
43	25.140	VB	0.0500	255.09964	78.33302	0.48599
44	25.358	BB	0.0487	9.17810	2.84244	0.01749
45	25.752	BB	0.0642	45.93291	10.47032	0.08751
46	26.123	BV	0.0543	9.74258	2.62633	0.01856
47	26.237	VB	0.0471	15.08028	5.15280	0.02873
48	26.391	BB	0.0707	77.04074	14.80964	0.14677
49	27.454	BB	0.0515	272.20981	84.66004	0.51859
50	27.701	BB	0.0522	368.82480	109.67122	0.70265
51	27.876	BV	0.0496	6.92370	2.20642	0.01319
52	28.060	VB	0.0688	62.34098	13.53070	0.11877
53	28.285	BB	0.0500	36.94221	11.95689	0.07038
54	28.577	BV	0.0405	5.40652	2.06808	0.01030
55	28.829	VV	0.0983	1573.49084	217.63400	2.99766
56	29.037	VB	0.0691	3652.55493	686.62543	6.95848
57	29.463	BV	0.0399	7.67913	3.21484	0.01463
58	29.597	VB	0.0530	439.29535	125.10995	0.83690
59	29.878	BB	0.0423	5.85626	2.25173	0.01116
60	30.090	BB	0.0490	427.37177	134.82225	0.81419
61	31.118	BB	0.0621	222.84294	54.04042	0.42454

Peak #	RetTime [min]	Type	Width [min]	Area [pA*s]	Height [pA]	Area %
62	31.916	BB	0.0634	25.04772	5.68696	0.04772
63	32.452	BB	0.0552	33.60149	8.86206	0.06401
64	33.472	BB	0.0524	6.74754	2.04974	0.01285
65	34.382	BB	0.0704	32.43911	6.27062	0.06180
66	34.636	BB	0.0554	17.65184	4.85177	0.03363
67	37.219	BV	0.0472	10.49909	3.47839	0.02000
68	37.352	VB	0.0707	247.93576	49.29236	0.47234
69	43.953	BB	0.0622	28.30526	7.00032	0.05392
70	47.338	BB	0.0570	90.20634	23.93794	0.17185

Totals : 5.24907e4 9916.92434

=====
*** End of Report ***