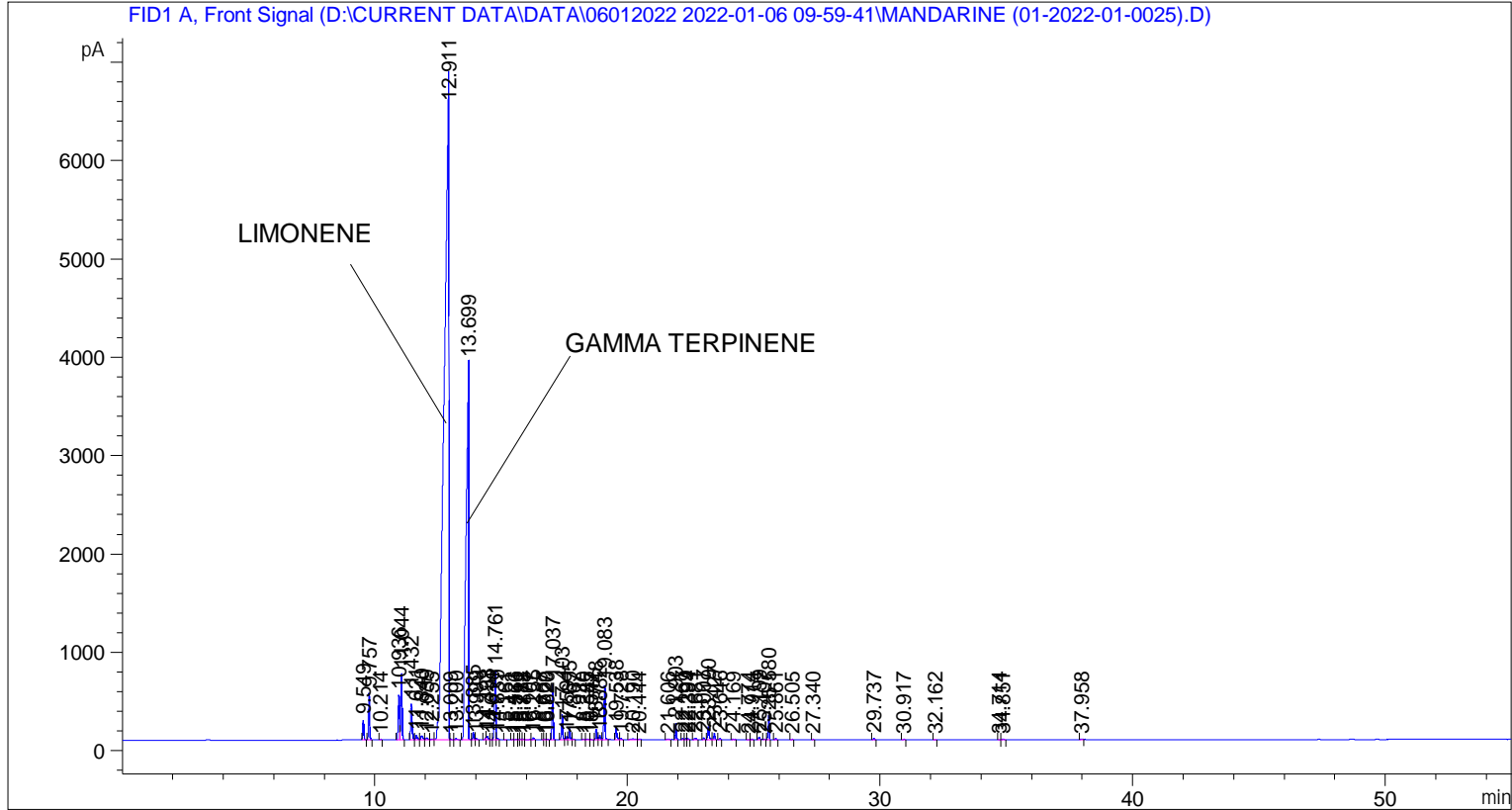


```

=====
Acq. Operator   : SYSTEM                               Seq. Line :    4
Acq. Instrument : BMV_NEW_GC_7820                     Location  : Vial 104
Injection Date  : 06-Jan-22 1:26:10 PM                Inj       :    1
                                                    Inj Volume: 0.5 µl

Acq. Method     : D:\CURRENT DATA\DATA\06012022 2022-01-06 09-59-41\UNIVERSAL BMV.M
Last changed    : 06-Jan-22 9:59:51 AM by SYSTEM
Analysis Method : C:\CHEM32\2\METHODS\COOLING.M
Last changed    : 05-Nov-20 11:10:00 AM by SYSTEM
Additional Info  : Peak(s) manually integrated
  
```



=====
 Area Percent Report
 =====

```

Sorted By      : Signal
Multiplier     : 1.0000
Dilution      : 1.0000
Do not use Multiplier & Dilution Factor with ISTDs
  
```

Signal 1: FID1 A, Front Signal

Peak #	RetTime [min]	Type	Width [min]	Area [pA*s]	Height [pA]	Area %
1	9.549	BB	0.0461	610.50671	203.02896	0.46655
2	9.757	BB	0.0472	1442.25537	477.92905	1.10217
3	10.214	BB	0.0536	20.82446	5.83936	0.01591
4	10.936	BV	0.0592	1655.43701	457.40393	1.26508
5	11.044	VB	0.0504	2202.79175	669.34155	1.68337
6	11.432	BV	0.0651	1502.87268	364.84070	1.14849
7	11.621	VV	0.0665	201.79419	44.01024	0.15421
8	11.840	VV	0.0826	227.60901	41.78433	0.17394

Peak #	RetTime [min]	Type	Width [min]	Area [pA*s]	Height [pA]	Area %
9	12.039	VV	0.0806	105.80005	20.03837	0.08085
10	12.255	VV	0.1035	68.21545	8.69437	0.05213
11	12.911	VV	0.1514	8.32989e4	6779.32080	63.65696
12	13.009	VB	0.0350	10.25207	4.43340	0.00783
13	13.200	BB	0.0576	49.47025	12.95060	0.03781
14	13.699	BV	0.0924	2.76913e4	3829.69141	21.16163
15	13.885	VV	0.0484	248.35037	77.46674	0.18979
16	13.999	VB	0.0541	36.73252	9.71210	0.02807
17	14.393	BV	0.0386	70.12295	26.72773	0.05359
18	14.438	VB	0.0457	114.23552	37.32028	0.08730
19	14.614	BV	0.0427	5.46254	2.07387	0.00417
20	14.761	VV	0.0498	2457.94458	702.32404	1.87836
21	14.839	VB	0.0476	48.84118	15.17384	0.03732
22	15.161	BB	0.0442	6.58284	2.31427	0.00503
23	15.423	BB	0.0485	11.51748	3.49176	0.00880
24	15.566	BB	0.0449	12.29827	3.99474	0.00940
25	15.711	BV	0.0398	14.36323	5.44227	0.01098
26	15.782	VV	0.0591	23.39133	5.33910	0.01788
27	15.878	VV	0.0505	24.97003	7.18443	0.01908
28	16.107	VV	0.0799	23.02002	4.20268	0.01759
29	16.255	VB	0.0450	59.88686	19.94277	0.04577
30	16.667	BV	0.0425	12.22450	4.39243	0.00934
31	16.729	VV	0.0481	23.95931	7.53392	0.01831
32	16.820	VB	0.0493	9.80740	2.90810	0.00749
33	17.037	BB	0.0496	1834.31152	568.60876	1.40178
34	17.403	BB	0.0470	765.89600	255.15475	0.58530
35	17.591	BV	0.0546	109.47559	30.69951	0.08366
36	17.695	VB	0.0474	349.49847	112.13824	0.26709
37	17.867	BB	0.0577	22.41418	5.71619	0.01713
38	18.240	BB	0.0579	18.56012	4.71529	0.01418
39	18.385	BB	0.0654	36.75464	7.60501	0.02809
40	18.547	BB	0.0525	11.07497	3.11643	0.00846
41	18.748	BV	0.0463	323.55930	107.03033	0.24726
42	18.882	VB	0.0476	143.99951	45.93769	0.11004
43	19.083	BB	0.0493	1756.17004	549.00903	1.34206
44	19.538	BV	0.0528	440.92282	122.93845	0.33695
45	19.728	VB	0.0502	44.71130	12.98540	0.03417
46	20.190	BV	0.1202	73.88770	7.96480	0.05646
47	20.444	VB	0.0620	25.03167	5.61417	0.01913
48	21.606	BB	0.0636	24.52787	5.24049	0.01874
49	21.903	BB	0.0455	477.32263	166.23622	0.36477
50	22.167	BB	0.0459	32.91119	10.99054	0.02515
51	22.299	BV	0.0470	39.76910	13.25705	0.03039
52	22.394	VB	0.0432	25.41678	9.21251	0.01942
53	22.681	BB	0.0699	65.52151	13.43860	0.05007
54	23.007	BB	0.0518	61.08091	18.38847	0.04668
55	23.190	BV	0.0579	504.43103	131.14670	0.38549
56	23.427	VB	0.0485	206.61758	66.11536	0.15790
57	23.646	BB	0.0477	43.48452	14.62096	0.03323
58	24.169	BB	0.0721	34.80165	6.64751	0.02660
59	24.774	BB	0.0454	6.20266	2.23565	0.00474
60	24.914	BB	0.0522	26.11559	7.58221	0.01996
61	25.199	BB	0.0457	77.05370	25.89624	0.05888
62	25.407	BB	0.0458	16.83025	5.48560	0.01286

Peak #	RetTime [min]	Type	Width [min]	Area [pA*s]	Height [pA]	Area %
63	25.580	BB	0.0468	730.07861	244.79083	0.55793
64	25.861	BB	0.0515	45.57353	13.47324	0.03483
65	26.505	BB	0.0474	13.50142	4.20740	0.01032
66	27.340	BB	0.0520	11.77279	3.34756	0.00900
67	29.737	BB	0.0605	46.30748	11.62895	0.03539
68	30.917	BB	0.0618	26.72879	6.02497	0.02043
69	32.162	BB	0.0606	11.96905	2.99354	0.00915
70	34.714	BV	0.0504	5.99387	1.91955	0.00458
71	34.851	VB	0.0653	41.62342	9.46938	0.03181
72	37.958	BB	0.0603	32.33864	7.07931	0.02471

Totals : 1.30856e5 1.64975e4

=====
*** End of Report ***