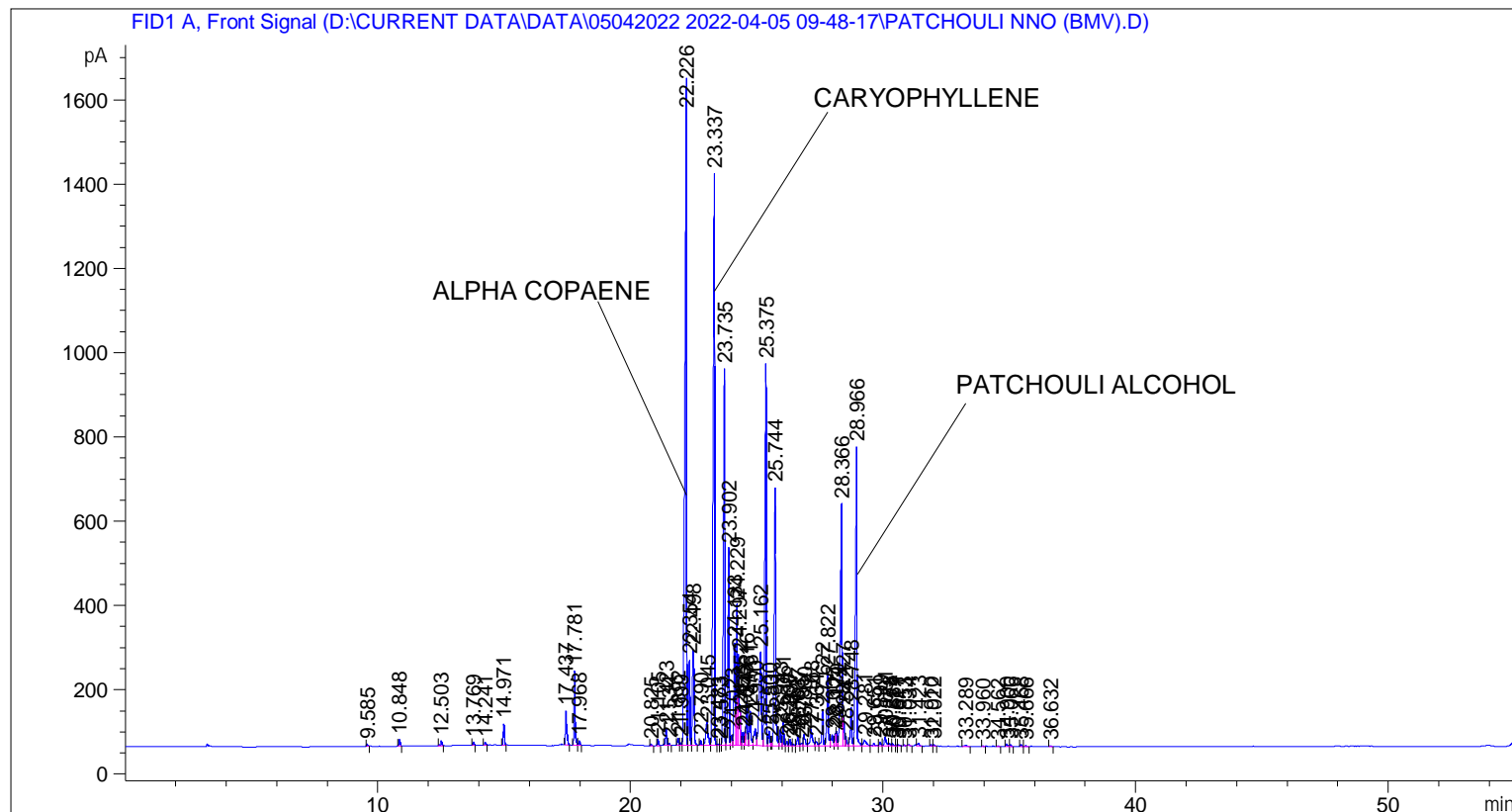


```

=====
Acq. Operator   : SYSTEM                               Seq. Line :    5
Acq. Instrument : BMV_NEW_GC_7820                     Location  : Vial 105
Injection Date  : 05-Apr-22 2:25:49 PM                 Inj       :    1
                                                    Inj Volume: 0.5 µl

Acq. Method     : D:\CURRENT DATA\DATA\05042022 2022-04-05 09-48-17\UNIVERSAL BMV.M
Last changed    : 05-Apr-22 9:48:31 AM by SYSTEM
Analysis Method : C:\CHEM32\2\METHODS\COOLING.M
Last changed    : 19-Apr-22 1:27:26 PM by SYSTEM
                  (modified after loading)

Additional Info : Peak(s) manually integrated
  
```



=====
 Area Percent Report
 =====

```

Sorted By      :      Signal
Multiplier     :      1.0000
Dilution      :      1.0000
Do not use Multiplier & Dilution Factor with ISTDs
  
```

Signal 1: FID1 A, Front Signal

| Peak # | RetTime [min] | Type | Width [min] | Area [pA*s] | Height [pA] | Area % |
|--------|---------------|------|-------------|-------------|-------------|---------|
| 1 | 9.585 | BB | 0.0496 | 18.49853 | 5.74103 | 0.04322 |
| 2 | 10.848 | BB | 0.0480 | 48.71501 | 15.37077 | 0.11382 |
| 3 | 12.503 | BB | 0.0541 | 42.42233 | 11.47226 | 0.09912 |
| 4 | 13.769 | BB | 0.0495 | 26.03484 | 7.68031 | 0.06083 |
| 5 | 14.241 | BB | 0.0514 | 24.29151 | 7.01960 | 0.05676 |
| 6 | 14.971 | BB | 0.0479 | 161.23738 | 50.94056 | 0.37672 |
| 7 | 17.437 | BB | 0.0535 | 292.52716 | 80.27717 | 0.68347 |

Sample Name: PATCHOULI NNO (BMV)

| Peak # | RetTime [min] | Type | Width [min] | Area [pA*s] | Height [pA] | Area % |
|--------|---------------|------|-------------|-------------|-------------|----------|
| 8 | 17.781 | BV | 0.0485 | 569.61597 | 177.40251 | 1.33087 |
| 9 | 17.968 | VB | 0.0488 | 34.51437 | 10.63964 | 0.08064 |
| 10 | 20.825 | BB | 0.0489 | 12.36333 | 3.91171 | 0.02889 |
| 11 | 21.105 | BB | 0.0486 | 49.03181 | 15.62676 | 0.11456 |
| 12 | 21.423 | BV | 0.0526 | 139.73529 | 40.10872 | 0.32648 |
| 13 | 21.534 | VB | 0.0517 | 17.51423 | 5.15099 | 0.04092 |
| 14 | 21.892 | BV | 0.0550 | 56.69468 | 16.55631 | 0.13246 |
| 15 | 21.999 | VV | 0.0494 | 20.09941 | 6.26846 | 0.04696 |
| 16 | 22.226 | VV | 0.0635 | 7655.35840 | 1580.74658 | 17.88618 |
| 17 | 22.354 | VV | 0.0514 | 684.12775 | 202.44016 | 1.59841 |
| 18 | 22.498 | VB | 0.0677 | 1050.97864 | 224.20494 | 2.45553 |
| 19 | 22.790 | BB | 0.0497 | 36.95149 | 11.42553 | 0.08633 |
| 20 | 23.045 | BV | 0.0880 | 366.22464 | 54.75087 | 0.85566 |
| 21 | 23.337 | VV | 0.0622 | 5953.95752 | 1357.48169 | 13.91098 |
| 22 | 23.483 | VV | 0.0516 | 10.79109 | 3.34677 | 0.02521 |
| 23 | 23.573 | VV | 0.0521 | 9.91995 | 2.81658 | 0.02318 |
| 24 | 23.735 | VV | 0.0543 | 3391.95020 | 893.37415 | 7.92504 |
| 25 | 23.902 | VV | 0.0525 | 1585.36084 | 468.80060 | 3.70408 |
| 26 | 24.023 | VV | 0.0559 | 94.90694 | 25.20260 | 0.22174 |
| 27 | 24.133 | VV | 0.0498 | 813.32019 | 244.48807 | 1.90026 |
| 28 | 24.229 | VV | 0.0533 | 1154.89453 | 334.75058 | 2.69833 |
| 29 | 24.297 | VV | 0.0493 | 711.69818 | 216.85254 | 1.66283 |
| 30 | 24.352 | VV | 0.0334 | 177.07318 | 81.18725 | 0.41372 |
| 31 | 24.455 | VV | 0.0470 | 96.51352 | 31.28034 | 0.22550 |
| 32 | 24.543 | VV | 0.0417 | 95.41632 | 34.08511 | 0.22293 |
| 33 | 24.616 | VV | 0.0559 | 387.41058 | 105.41261 | 0.90516 |
| 34 | 24.751 | VV | 0.0634 | 370.23303 | 82.41844 | 0.86502 |
| 35 | 24.950 | VV | 0.0834 | 231.04002 | 39.98617 | 0.53981 |
| 36 | 25.162 | VV | 0.0819 | 1349.69629 | 222.15276 | 3.15347 |
| 37 | 25.375 | VV | 0.0548 | 3476.36401 | 905.42700 | 8.12227 |
| 38 | 25.500 | VV | 0.0586 | 132.73436 | 35.50846 | 0.31012 |
| 39 | 25.583 | VV | 0.0385 | 22.82489 | 8.72471 | 0.05333 |
| 40 | 25.744 | VB | 0.0563 | 2378.62915 | 612.13458 | 5.55749 |
| 41 | 25.943 | BV | 0.0557 | 141.84338 | 37.88070 | 0.33141 |
| 42 | 26.061 | VV | 0.0512 | 179.39626 | 54.74382 | 0.41915 |
| 43 | 26.209 | VV | 0.0513 | 35.95017 | 10.15031 | 0.08399 |
| 44 | 26.337 | VV | 0.0505 | 48.37428 | 15.03695 | 0.11302 |
| 45 | 26.461 | VV | 0.0668 | 13.53500 | 3.30152 | 0.03162 |
| 46 | 26.637 | VV | 0.0543 | 90.68433 | 24.42239 | 0.21188 |
| 47 | 26.795 | VV | 0.0648 | 27.83038 | 6.03981 | 0.06502 |
| 48 | 26.880 | VV | 0.0679 | 131.58377 | 26.99200 | 0.30744 |
| 49 | 27.168 | VV | 0.0840 | 242.86221 | 39.35218 | 0.56743 |
| 50 | 27.364 | VV | 0.0744 | 58.17271 | 10.54112 | 0.13592 |
| 51 | 27.622 | VV | 0.0564 | 321.98099 | 84.66251 | 0.75228 |
| 52 | 27.822 | VV | 0.0595 | 693.99158 | 174.06401 | 1.62146 |
| 53 | 28.005 | VV | 0.0743 | 155.68877 | 26.21480 | 0.36376 |
| 54 | 28.124 | VV | 0.0406 | 84.44165 | 30.20064 | 0.19729 |
| 55 | 28.170 | VV | 0.0516 | 119.15687 | 34.20429 | 0.27840 |
| 56 | 28.366 | VV | 0.0591 | 2459.14429 | 573.06738 | 5.74561 |
| 57 | 28.427 | VV | 0.0539 | 334.32571 | 81.44028 | 0.78113 |
| 58 | 28.542 | VV | 0.0542 | 79.70558 | 21.50865 | 0.18623 |
| 59 | 28.748 | VV | 0.0567 | 360.09357 | 91.86009 | 0.84133 |
| 60 | 28.966 | VB | 0.0572 | 2926.81836 | 708.68738 | 6.83829 |
| 61 | 29.281 | BV | 0.1080 | 106.89414 | 12.72284 | 0.24975 |

| Peak # | RetTime [min] | Type | Width [min] | Area [pA*s] | Height [pA] | Area % |
|--------|---------------|------|-------------|-------------|-------------|---------|
| 62 | 29.651 | VV | 0.0694 | 28.63075 | 5.82342 | 0.06689 |
| 63 | 29.899 | VV | 0.0517 | 30.64983 | 8.56508 | 0.07161 |
| 64 | 30.091 | VV | 0.0809 | 113.02042 | 20.30379 | 0.26406 |
| 65 | 30.278 | VV | 0.0607 | 23.28777 | 5.35593 | 0.05441 |
| 66 | 30.384 | VV | 0.0589 | 19.98641 | 4.97539 | 0.04670 |
| 67 | 30.527 | VV | 0.0438 | 5.95852 | 2.11956 | 0.01392 |
| 68 | 30.611 | VB | 0.0690 | 12.71145 | 2.51308 | 0.02970 |
| 69 | 30.853 | BB | 0.0396 | 4.53013 | 1.98618 | 0.01058 |
| 70 | 31.034 | BB | 0.0365 | 4.50027 | 2.33638 | 0.01051 |
| 71 | 31.423 | BB | 0.0806 | 34.28619 | 5.91719 | 0.08011 |
| 72 | 31.910 | BV | 0.0461 | 12.32999 | 3.98705 | 0.02881 |
| 73 | 32.022 | VB | 0.0562 | 10.03968 | 2.84394 | 0.02346 |
| 74 | 33.289 | BB | 0.1099 | 27.37082 | 3.33151 | 0.06395 |
| 75 | 33.960 | BB | 0.0484 | 6.06557 | 2.11851 | 0.01417 |
| 76 | 34.562 | BB | 0.0592 | 10.57940 | 2.67211 | 0.02472 |
| 77 | 34.900 | BB | 0.0620 | 26.06175 | 6.33422 | 0.06089 |
| 78 | 35.066 | BB | 0.0598 | 18.86612 | 4.80631 | 0.04408 |
| 79 | 35.468 | BB | 0.0572 | 21.88003 | 6.04247 | 0.05112 |
| 80 | 35.666 | BB | 0.0654 | 15.06306 | 3.29274 | 0.03519 |
| 81 | 36.632 | BB | 0.0567 | 10.44743 | 2.78850 | 0.02441 |

Totals : 4.28004e4 1.03984e4

=====
*** End of Report ***