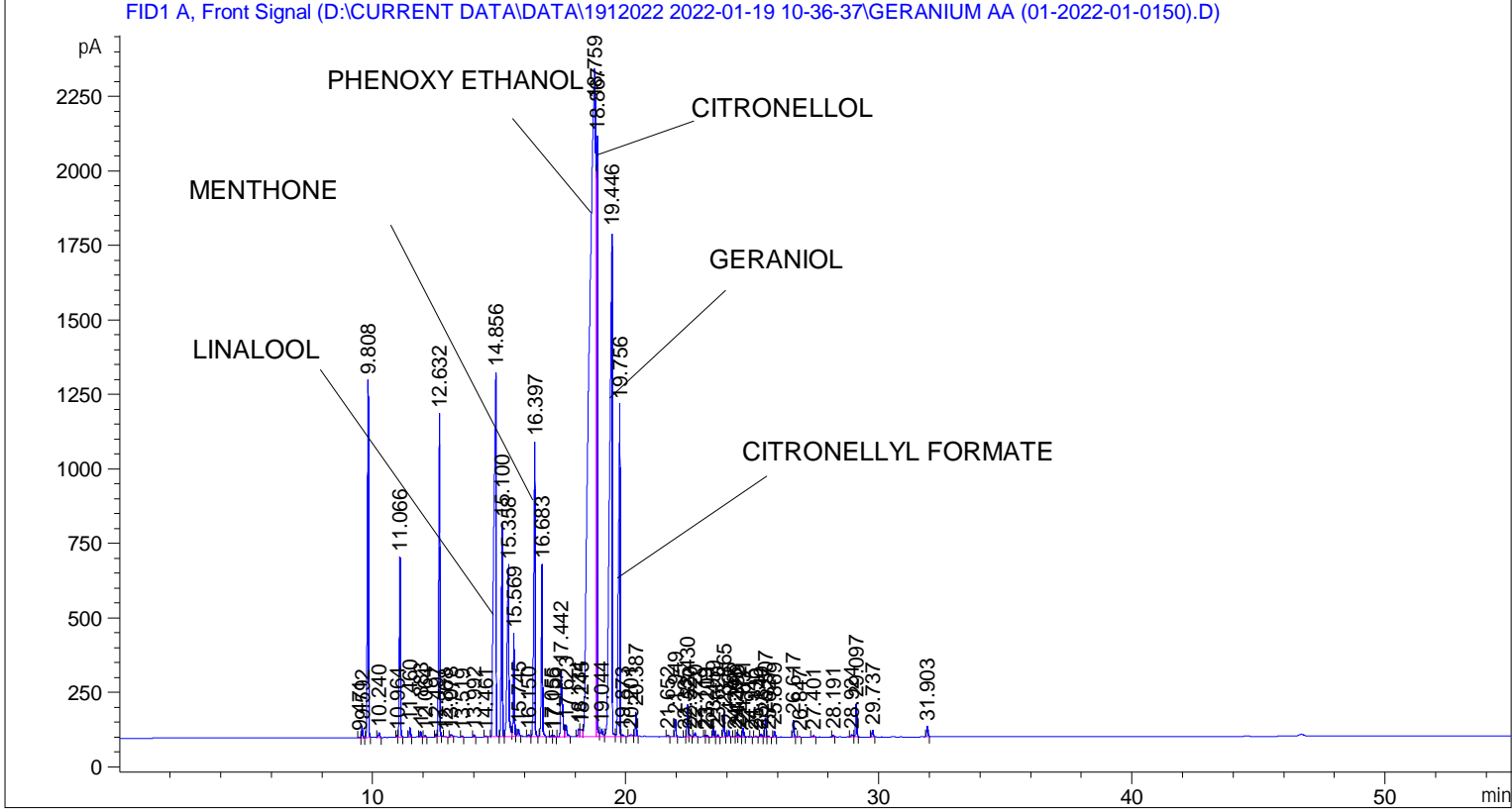


```

=====
Acq. Operator   : SYSTEM                               Seq. Line :    3
Acq. Instrument : BMV_NEW_GC_7820                     Location  : Vial 103
Injection Date  : 19-Jan-22 12:57:02 PM                Inj       :    1
                                                    Inj Volume: 0.5 µl

Acq. Method     : D:\CURRENT DATA\DATA\1912022 2022-01-19 10-36-37\UNIVERSAL BMV.M
Last changed    : 19-Jan-22 10:36:48 AM by SYSTEM
Analysis Method : C:\CHEM32\2\METHODS\COOLING.M
Last changed    : 05-Nov-20 11:10:00 AM by SYSTEM
  
```



Area Percent Report

```

Sorted By       : Signal
Multiplier      : 1.0000
Dilution        : 1.0000
Do not use Multiplier & Dilution Factor with ISTDs
  
```

Signal 1: FID1 A, Front Signal

Peak #	RetTime [min]	Type	Width [min]	Area [pA*s]	Height [pA]	Area %
1	9.471	BV	0.0467	9.45005	3.17478	0.00979
2	9.592	VB	0.0482	125.62119	40.51139	0.13016
3	9.808	BB	0.0510	3807.94653	1199.54871	3.94560
4	10.240	BB	0.0543	57.57257	15.49965	0.05965
5	10.964	BV	0.0408	18.66946	7.29835	0.01934
6	11.066	VB	0.0471	1816.50720	603.14880	1.88217
7	11.460	BB	0.0447	95.71811	33.15172	0.09918
8	11.883	BB	0.0463	59.60127	20.26590	0.06176
9	12.064	BB	0.0479	17.39878	5.80790	0.01803

Peak #	RetTime [min]	Type	Width [min]	Area [pA*s]	Height [pA]	Area %
10	12.497	BV	0.0409	27.65385	10.80247	0.02865
11	12.632	VB	0.0492	3454.35254	1082.07703	3.57923
12	12.868	BB	0.0428	5.81818	2.20091	0.00603
13	13.078	BB	0.0659	38.75610	8.22880	0.04016
14	13.519	BB	0.0476	11.77277	3.97057	0.01220
15	13.992	BB	0.0511	24.77846	7.39298	0.02567
16	14.461	BB	0.0520	15.08631	4.28853	0.01563
17	14.856	BV	0.0798	7634.96338	1223.66406	7.91097
18	15.100	VB	0.0489	2333.32227	718.35138	2.41767
19	15.358	BV	0.0643	2883.66040	576.70471	2.98791
20	15.569	VB	0.0436	963.57599	344.33829	0.99841
21	15.745	BB	0.0588	86.54481	22.54018	0.08967
22	16.150	BB	0.0474	18.42671	6.07491	0.01909
23	16.397	BB	0.0523	3754.65625	989.66821	3.89039
24	16.683	BB	0.0479	1877.71338	578.13873	1.94559
25	17.055	BV	0.0499	18.73832	5.92161	0.01942
26	17.156	VB	0.0458	15.39392	5.16641	0.01595
27	17.442	BV	0.0741	1163.35510	225.83578	1.20541
28	17.623	VB	0.0699	199.65529	40.23111	0.20687
29	18.134	BV	0.0723	132.49977	26.97910	0.13729
30	18.245	VV	0.0887	178.90280	24.65624	0.18537
31	18.759	VV	0.2177	4.08051e4	2238.53223	42.28017
32	18.867	VB	0.0422	5561.91797	2014.38269	5.76298
33	19.044	BV	0.0752	143.12395	25.98928	0.14830
34	19.446	VV	0.0856	1.15459e4	1692.08875	11.96333
35	19.756	VV	0.0588	4939.94043	1112.98828	5.11852
36	19.873	VB	0.0516	22.59803	6.33899	0.02341
37	20.201	BV	0.0909	36.78645	5.23817	0.03812
38	20.387	VB	0.0448	230.58295	81.93349	0.23892
39	21.652	BB	0.0472	17.27962	5.72755	0.01790
40	21.949	BB	0.0462	169.54816	57.85584	0.17568
41	22.335	BV	0.0401	6.44187	2.57894	0.00667
42	22.430	VV	0.0465	321.60471	108.82941	0.33323
43	22.520	VB	0.0588	31.07634	7.75463	0.03220
44	22.720	BB	0.0570	50.97355	12.92066	0.05282
45	23.119	BV	0.0460	15.47135	5.16229	0.01603
46	23.203	VB	0.0552	23.35722	6.03463	0.02420
47	23.459	BB	0.0480	87.08511	28.19746	0.09023
48	23.620	BB	0.0475	23.87155	7.84932	0.02473
49	23.865	BB	0.0467	259.48358	87.21401	0.26886
50	24.065	BB	0.0458	60.85462	20.99460	0.06305
51	24.293	BV	0.0459	7.43792	2.55991	0.00771
52	24.390	VV	0.0479	49.11946	15.95012	0.05090
53	24.472	VV	0.0566	27.24072	6.81534	0.02823
54	24.631	VB	0.0482	87.85171	28.28713	0.09103
55	24.945	BB	0.0424	5.12735	1.84862	0.00531
56	25.130	BB	0.0464	9.82146	3.14569	0.01018
57	25.340	BB	0.0514	31.48815	9.55667	0.03263
58	25.507	BV	0.0471	184.92984	63.30445	0.19162
59	25.627	VB	0.0497	9.85662	3.04819	0.01021
60	25.869	BB	0.0508	71.75471	21.60306	0.07435
61	26.617	BB	0.0496	181.99438	56.41401	0.18857
62	26.847	BB	0.0483	6.44158	2.07206	0.00667
63	27.401	BB	0.0691	25.57451	5.41067	0.02650

Peak #	RetTime [min]	Type	Width [min]	Area [pA*s]	Height [pA]	Area %
64	28.191	BB	0.0444	17.85333	6.42969	0.01850
65	28.924	BV	0.0672	36.85565	7.52250	0.03819
66	29.097	VB	0.0481	350.69617	113.46897	0.36337
67	29.737	BB	0.0534	81.08855	22.82993	0.08402
68	31.903	BB	0.0529	124.86878	35.59189	0.12938

Totals : 9.65111e4 1.57701e4

=====
*** End of Report ***