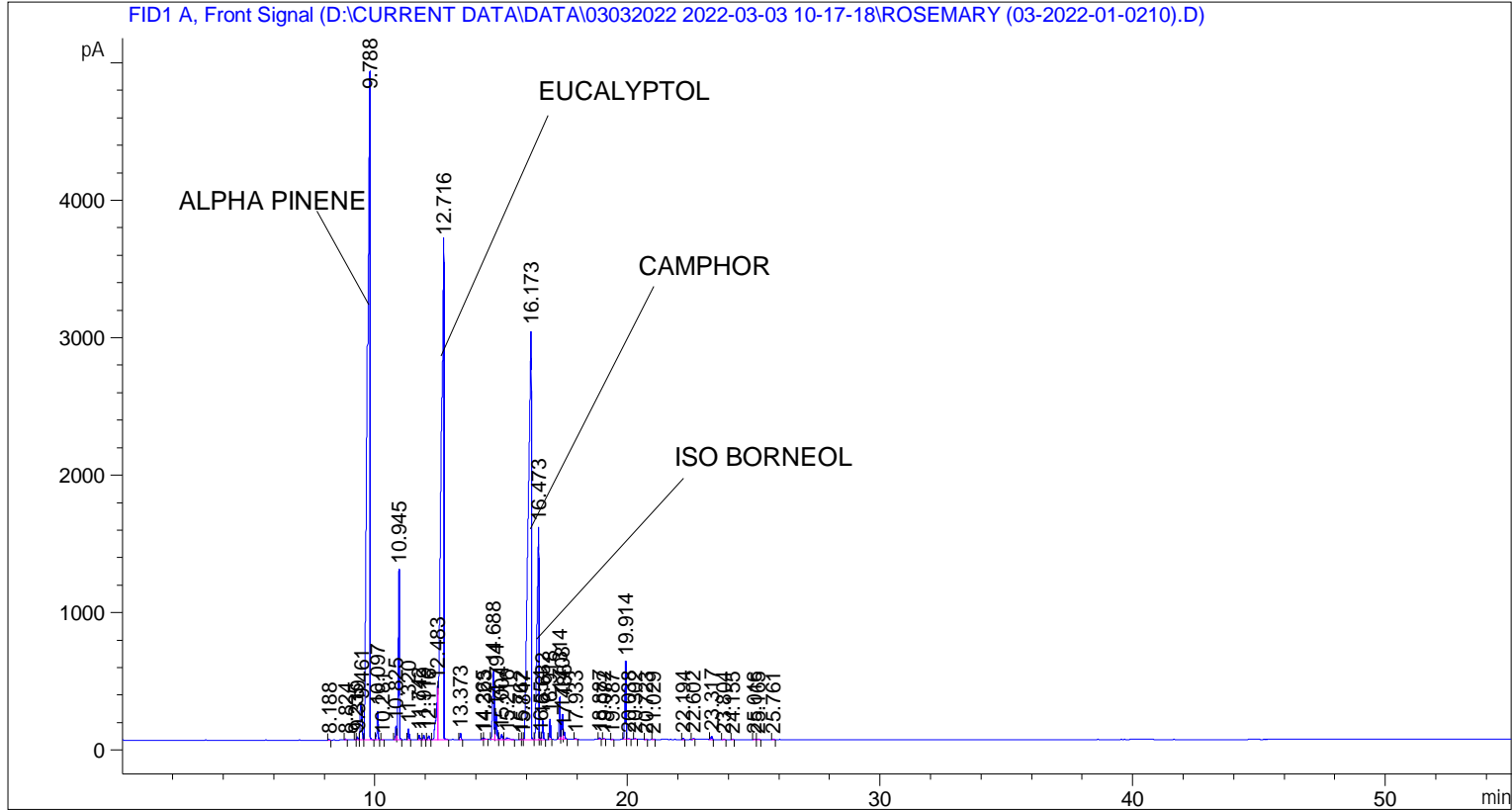


```

=====
Acq. Operator   : SYSTEM                               Seq. Line :    3
Acq. Instrument : BMV_NEW_GC_7820                     Location  : Vial 103
Injection Date  : 03-Mar-22 12:40:23 PM                Inj       :    1
                                                    Inj Volume: 0.5 µl

Acq. Method    : D:\CURRENT DATA\DATA\03032022 2022-03-03 10-17-18\UNIVERSAL BMV.M
Last changed   : 03-Mar-22 10:17:28 AM by SYSTEM
Analysis Method: C:\CHEM32\2\METHODS\COOLING.M
Last changed   : 04-Mar-22 12:18:45 PM by SYSTEM
                (modified after loading)
  
```



=====
 Area Percent Report
 =====

```

Sorted By      :      Signal
Multiplier     :      1.0000
Dilution       :      1.0000
Do not use Multiplier & Dilution Factor with ISTDs
  
```

Signal 1: FID1 A, Front Signal

Peak #	RetTime [min]	Type	Width [min]	Area [pA*s]	Height [pA]	Area %
1	8.188	BB	0.0436	16.21589	5.62615	0.01509
2	8.824	BB	0.0490	17.14238	5.40474	0.01595
3	9.235	BV	0.0428	6.63856	2.43832	0.00618
4	9.319	VV	0.0568	79.25776	22.68830	0.07375
5	9.461	VV	0.0908	1378.35950	252.20847	1.28266
6	9.788	VB	0.0788	3.02615e4	4846.42871	28.16041
7	10.097	BB	0.0430	588.57098	208.29082	0.54771
8	10.281	BB	0.0449	8.53272	2.93508	0.00794

Peak #	RetTime [min]	Type	Width [min]	Area [pA*s]	Height [pA]	Area %
9	10.825	BV	0.0506	321.53180	102.37247	0.29921
10	10.945	VB	0.0488	3912.62183	1240.13782	3.64096
11	11.320	BB	0.0444	219.66437	76.68011	0.20441
12	11.742	BB	0.0477	102.60557	33.57426	0.09548
13	11.919	BB	0.0486	101.32661	32.31348	0.09429
14	12.116	BB	0.0555	100.45377	28.20913	0.09348
15	12.483	BV	0.0794	2215.69604	395.47388	2.06186
16	12.716	VB	0.0924	2.71848e4	3627.23877	25.29728
17	13.373	BB	0.0428	129.36435	46.01791	0.12038
18	14.265	BV	0.0435	32.37826	11.62410	0.03013
19	14.323	VB	0.0643	26.83846	5.65784	0.02498
20	14.688	BV	0.0619	2141.00146	510.60480	1.99235
21	14.794	VV	0.0531	700.90479	199.16020	0.65224
22	15.004	VV	0.0690	165.01453	34.36369	0.15356
23	15.216	VB	0.1004	108.70484	14.34566	0.10116
24	15.762	BV	0.0470	17.05668	5.84832	0.01587
25	15.847	VV	0.0509	13.76489	4.12562	0.01281
26	16.173	VV	0.1036	2.48983e4	2976.80518	23.16959
27	16.473	VV	0.0751	8100.76025	1547.68115	7.53831
28	16.554	VV	0.0485	39.39949	11.94363	0.03666
29	16.632	VB	0.0438	378.02795	134.66290	0.35178
30	16.918	BB	0.0444	415.27682	149.54662	0.38644
31	17.314	BV	0.0483	941.94653	311.50177	0.87655
32	17.408	VV	0.0454	536.30920	182.15175	0.49907
33	17.486	VB	0.0519	177.36107	50.59095	0.16505
34	17.933	BB	0.0567	17.13960	4.47545	0.01595
35	18.887	BB	0.0465	34.42970	11.99509	0.03204
36	19.072	BB	0.0449	14.69868	5.05210	0.01368
37	19.387	BB	0.0481	5.71289	1.84403	0.00532
38	19.914	BV	0.0489	1795.09839	568.30676	1.67046
39	20.038	VB	0.0750	22.06617	3.95996	0.02053
40	20.302	BB	0.0508	17.12517	4.90035	0.01594
41	20.723	BB	0.0536	9.41451	2.57731	0.00876
42	21.029	BB	0.0481	16.09537	4.92979	0.01498
43	22.194	BB	0.0477	20.62914	6.93281	0.01920
44	22.602	BV	0.0628	29.11980	6.81515	0.02710
45	23.317	BB	0.0496	73.73680	22.90434	0.06862
46	23.804	BB	0.0532	12.28717	3.39706	0.01143
47	24.155	BB	0.0467	7.53636	2.53290	0.00701
48	25.016	BB	0.0635	14.06668	3.18373	0.01309
49	25.165	BB	0.0835	16.09096	2.82231	0.01497
50	25.761	BB	0.0504	18.64104	5.52523	0.01735

Totals : 1.07461e5 1.77408e4

=====
*** End of Report ***