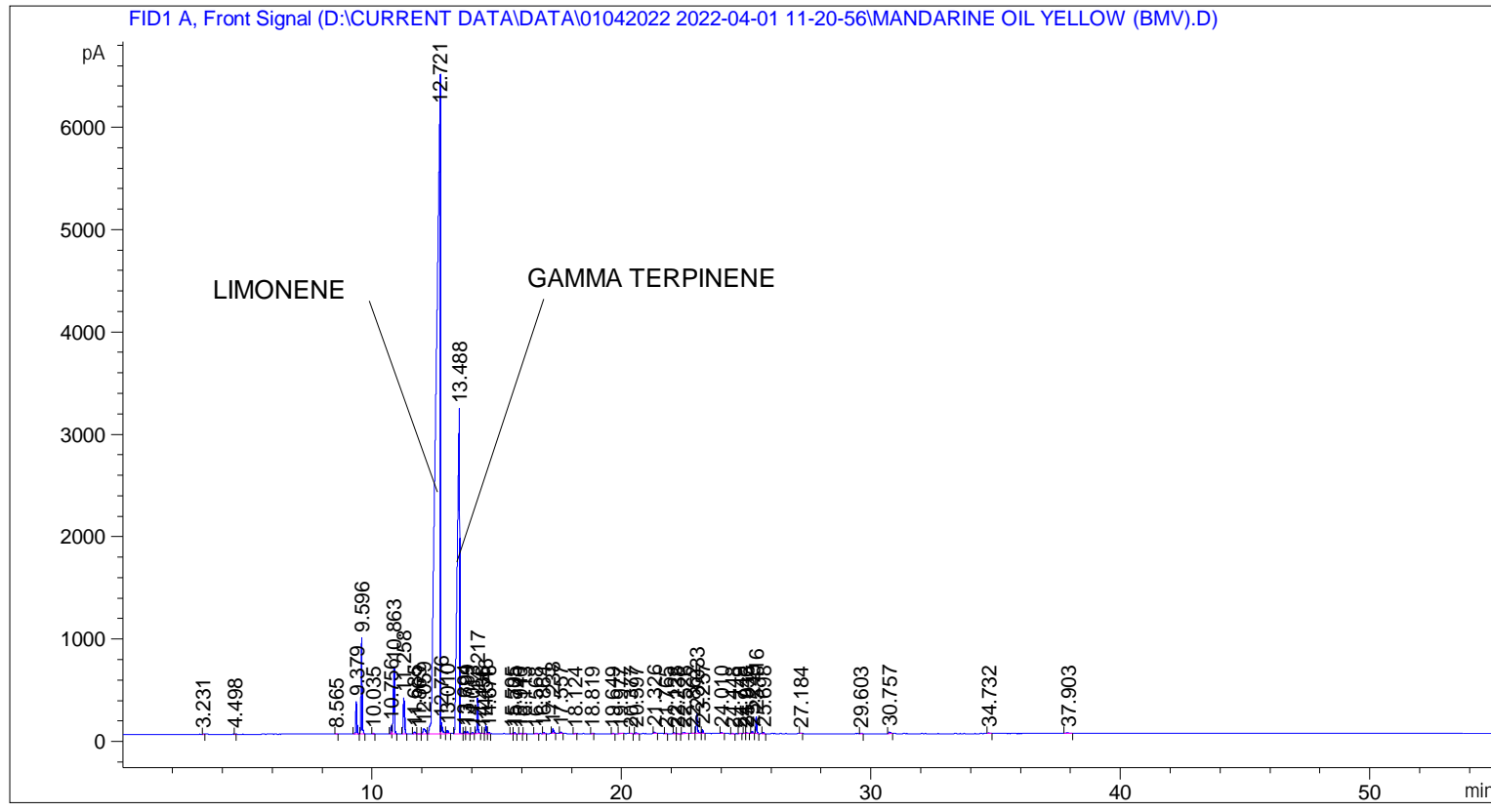


```

=====
Acq. Operator   : SYSTEM                               Seq. Line :    3
Acq. Instrument : BMV_NEW_GC_7820                     Location  : Vial 103
Injection Date  : 01-Apr-22 1:44:42 PM                 Inj       :    1
                                                    Inj Volume: 0.5 µl

Acq. Method     : D:\CURRENT DATA\DATA\01042022 2022-04-01 11-20-56\UNIVERSAL BMV.M
Last changed    : 01-Apr-22 11:21:07 AM by SYSTEM
Analysis Method : C:\CHEM32\2\METHODS\COOLING.M
Last changed    : 01-Apr-22 1:39:10 PM by SYSTEM
                (modified after loading)
  
```



=====  
 Area Percent Report  
 =====

```

Sorted By       : Signal
Multiplier      : 1.0000
Dilution        : 1.0000
Do not use Multiplier & Dilution Factor with ISTDs
  
```

Signal 1: FID1 A, Front Signal

Peak #	RetTime [min]	Type	Width [min]	Area [pA*s]	Height [pA]	Area %
1	3.231	BB	0.0320	8.55484	3.84478	0.00804
2	4.498	BB	0.0288	5.40667	2.89009	0.00508
3	8.565	BB	0.0432	6.17827	2.24118	0.00581
4	9.379	BB	0.0468	958.91876	321.66321	0.90149
5	9.596	BB	0.0463	2765.19165	941.66455	2.59958
6	10.035	BB	0.0488	27.89824	8.60461	0.02623
7	10.756	BV	0.0504	248.77664	79.65906	0.23388
8	10.863	VB	0.0522	2159.39697	659.81256	2.03006

Peak #	RetTime [min]	Type	Width [min]	Area [pA*s]	Height [pA]	Area %
9	11.258	BB	0.0596	1357.85413	355.06479	1.27653
10	11.685	BB	0.0677	76.52794	17.61630	0.07194
11	11.869	BV	0.0702	19.73486	4.24539	0.01855
12	12.059	VV	0.1005	356.43945	50.42026	0.33509
13	12.721	VV	0.1418	7.42660e4	6426.72461	69.81795
14	12.776	VV	0.0547	403.56052	105.32521	0.37939
15	13.010	VB	0.0551	119.57652	31.66803	0.11241
16	13.488	BV	0.0791	1.98567e4	3168.76172	18.66739
17	13.694	VV	0.0402	61.07669	24.41054	0.05742
18	13.799	VB	0.0509	72.69955	21.23325	0.06835
19	14.013	BB	0.0574	35.81393	9.19643	0.03367
20	14.217	BB	0.0418	952.81543	349.56888	0.89575
21	14.436	BV	0.0441	7.23400	2.54657	0.00680
22	14.546	VV	0.0455	223.07364	75.34328	0.20971
23	14.676	VB	0.0549	29.59853	8.24866	0.02783
24	15.595	BV	0.0460	8.69174	2.89937	0.00817
25	15.705	VB	0.0462	29.37365	9.74002	0.02761
26	15.940	BB	0.0476	15.98259	4.96079	0.01503
27	16.113	BB	0.0469	11.04884	3.59266	0.01039
28	16.568	BB	0.0552	22.83200	5.88798	0.02146
29	16.864	BB	0.0570	41.73867	11.33712	0.03924
30	17.238	BB	0.0527	167.13914	46.79915	0.15713
31	17.557	BB	0.0536	48.65977	13.66217	0.04575
32	18.124	BB	0.0459	8.20896	2.74638	0.00772
33	18.819	BB	0.0491	9.10520	2.78966	0.00856
34	19.649	BB	0.0624	15.75732	3.80154	0.01481
35	19.977	BB	0.0995	30.16332	3.88723	0.02836
36	20.377	BB	0.0551	14.69239	4.07194	0.01381
37	20.597	BB	0.0615	31.80795	7.97416	0.02990
38	21.326	BB	0.0568	47.83738	13.03400	0.04497
39	21.765	BB	0.0537	13.18829	3.69125	0.01240
40	22.128	BV	0.0489	27.18657	8.37857	0.02556
41	22.238	VB	0.0395	6.25912	2.47795	0.00588
42	22.526	BB	0.0822	72.87757	11.94697	0.06851
43	22.862	BB	0.0508	10.97989	3.29881	0.01032
44	23.033	BV	0.0555	692.75964	190.05006	0.65127
45	23.257	VB	0.0514	134.07762	40.68818	0.12605
46	24.010	BB	0.0653	37.00831	8.10472	0.03479
47	24.448	BB	0.0496	8.00271	2.55073	0.00752
48	24.749	BB	0.0501	10.95061	3.43934	0.01029
49	24.946	BV	0.0579	19.34009	5.13673	0.01818
50	25.033	VB	0.0539	25.62740	7.31520	0.02409
51	25.245	BB	0.0461	62.57020	20.80802	0.05882
52	25.416	BB	0.0486	509.54416	166.81467	0.47903
53	25.698	BB	0.0476	26.84136	8.78692	0.02523
54	27.184	BB	0.0536	13.23190	3.38177	0.01244
55	29.603	BB	0.0531	16.60317	4.60335	0.01561
56	30.757	BB	0.0635	57.54863	13.55822	0.05410
57	34.732	BB	0.0665	30.41112	6.75177	0.02859
58	37.903	BB	0.1212	73.87772	7.75405	0.06945

Totals : 1.06371e5 1.33275e4

=====

\*\*\* End of Report \*\*\*