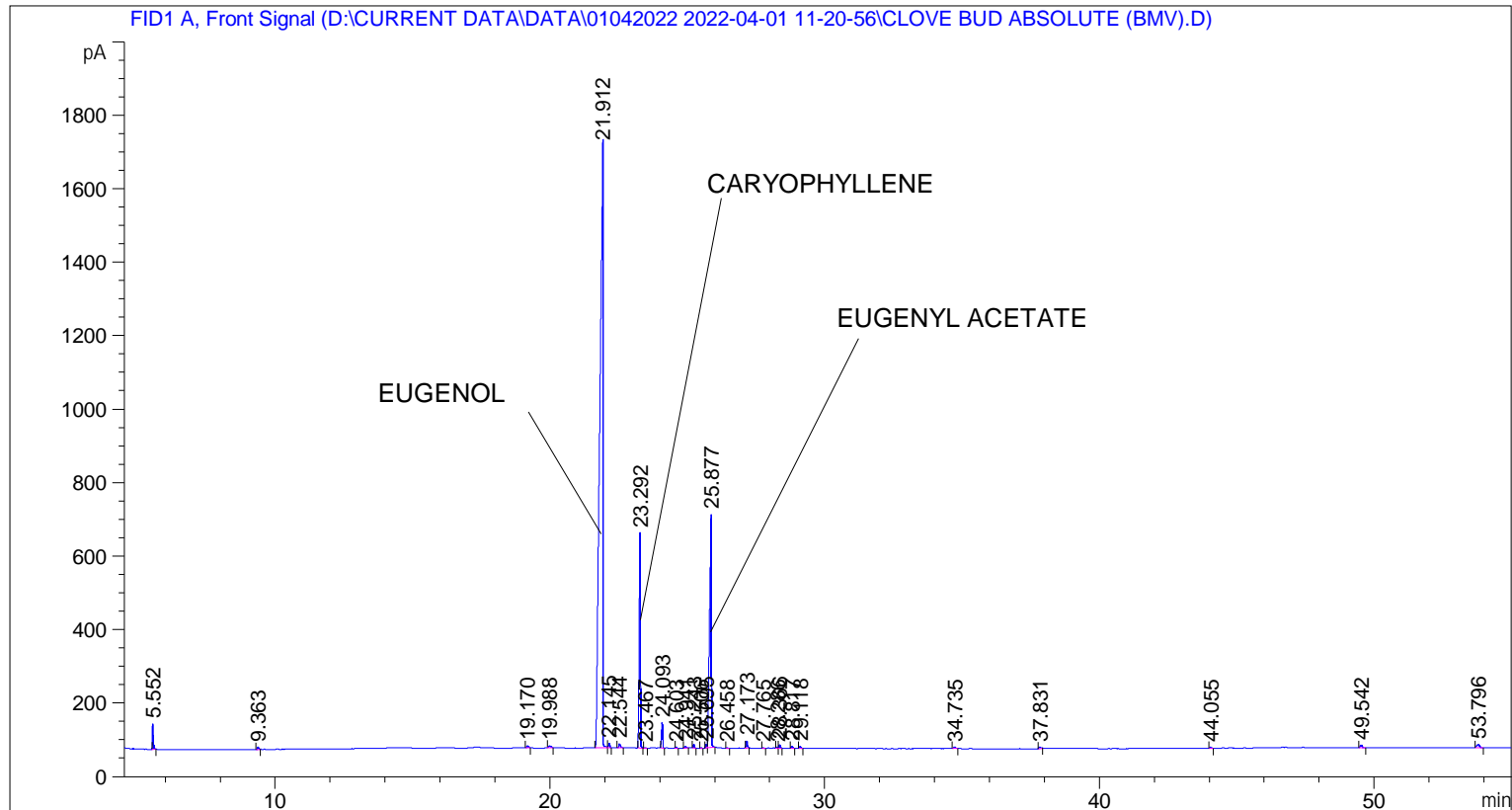


```

=====
Acq. Operator   : SYSTEM                               Seq. Line :    4
Acq. Instrument : BMV_NEW_GC_7820                     Location  : Vial 104
Injection Date  : 01-Apr-22 2:51:53 PM                Inj       :    1
                                                    Inj Volume: 0.5 µl

Acq. Method     : D:\CURRENT DATA\DATA\01042022 2022-04-01 11-20-56\UNIVERSAL BMV.M
Last changed    : 01-Apr-22 11:21:07 AM by SYSTEM
Analysis Method : C:\CHEM32\2\METHODS\COOLING.M
Last changed    : 01-Apr-22 4:08:45 PM by SYSTEM
                (modified after loading)

Additional Info  : Peak(s) manually integrated
  
```



=====  
 Area Percent Report  
 =====

```

Sorted By       :      Signal
Multiplier      :      1.0000
Dilution        :      1.0000
Do not use Multiplier & Dilution Factor with ISTDs
  
```

Signal 1: FID1 A, Front Signal

Peak #	RetTime [min]	Type	Width [min]	Area [pA*s]	Height [pA]	Area %
1	3.115	BB	0.0207	6.79963	5.06546	0.01924
2	3.198	BB S	0.0215	1.64917e4	1.16329e4	46.65924
3	5.552	BB	0.0354	161.74693	68.99583	0.45762
4	9.363	BB	0.0552	22.64895	6.11662	0.06408
5	19.170	BB	0.0593	25.11094	5.93806	0.07105
6	19.988	BB	0.0892	26.74041	4.26098	0.07566
7	21.912	BV	0.0986	1.30129e4	1638.87634	36.81684

Peak #	RetTime [min]	Type	Width [min]	Area [pA*s]	Height [pA]	Area %
8	22.145	VB	0.0494	40.12254	12.50753	0.11352
9	22.544	BB	0.0697	48.66292	10.38023	0.13768
10	23.292	BB	0.0494	1922.90417	584.15033	5.44040
11	23.467	BB	0.0494	6.19294	1.93005	0.01752
12	24.093	BB	0.0459	207.19077	69.18069	0.58620
13	24.603	BB	0.0436	8.34487	3.07828	0.02361
14	24.941	BB	0.0552	18.49584	5.00031	0.05233
15	25.243	BB	0.0460	28.56866	9.80648	0.08083
16	25.506	BB	0.0435	5.13751	1.84346	0.01454
17	25.695	BV	0.0448	28.52240	9.83719	0.08070
18	25.877	VB	0.0615	2963.46362	634.71387	8.38442
19	26.458	BB	0.0413	5.03601	1.87661	0.01425
20	27.173	BB	0.0504	66.88706	20.30276	0.18924
21	27.765	BB	0.0471	7.64978	2.40755	0.02164
22	28.286	BV	0.0463	11.41195	3.47939	0.03229
23	28.366	VB	0.0536	32.13226	9.22459	0.09091
24	28.817	BB	0.0546	21.44052	5.87074	0.06066
25	29.118	BB	0.0547	20.76554	5.80276	0.05875
26	34.735	BB	0.0706	20.60322	4.48759	0.05829
27	37.831	BB	0.0726	19.02833	3.72258	0.05384
28	44.055	BB	0.0646	12.42707	2.92541	0.03516
29	49.542	BB	0.0764	34.92815	7.35191	0.09882
30	53.796	BB	0.0926	67.39765	9.40628	0.19069

Totals : 3.53449e4 1.47814e4

=====  
\*\*\* End of Report \*\*\*