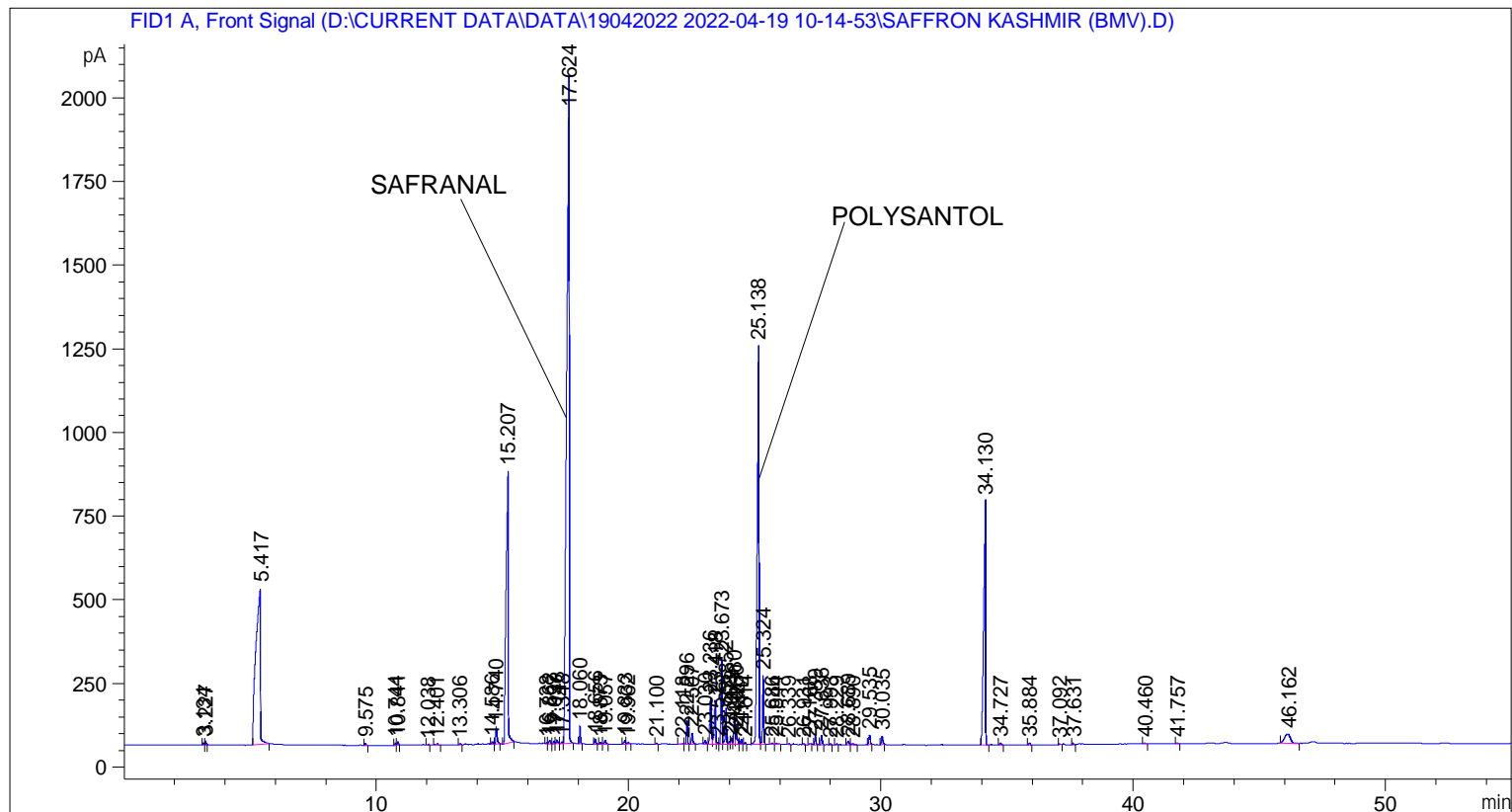


```

=====
Acq. Operator   : SYSTEM                               Seq. Line :    3
Acq. Instrument : BMV_NEW_GC_7820                     Location  : Vial 103
Injection Date  : 19-Apr-22 12:39:48 PM                Inj       :    1
                                                    Inj Volume: 0.5 µl

Acq. Method     : D:\CURRENT DATA\DATA\19042022 2022-04-19 10-14-53\UNIVERSAL BMV.M
Last changed    : 19-Apr-22 10:14:53 AM by SYSTEM
Analysis Method : C:\CHEM32\2\METHODS\COOLING.M
Last changed    : 05-Nov-20 11:10:00 AM by SYSTEM
  
```



=====
 Area Percent Report
 =====

```

Sorted By       : Signal
Multiplier      : 1.0000
Dilution       : 1.0000
Do not use Multiplier & Dilution Factor with ISTDs
  
```

Signal 1: FID1 A, Front Signal

Peak #	RetTime [min]	Type	Width [min]	Area [pA*s]	Height [pA]	Area %
1	3.134	BB	0.0307	14.70173	6.93098	0.03730
2	3.227	BB	0.0367	28.45408	11.19088	0.07220
3	5.417	BB	0.1614	5915.51123	468.18567	15.00948
4	9.575	BB	0.0452	18.28991	6.24416	0.04641
5	10.744	BV	0.0415	16.73408	6.20042	0.04246
6	10.841	VB	0.0464	32.08139	10.56479	0.08140
7	12.038	BB	0.0445	5.07818	1.82353	0.01288
8	12.401	BB	0.0722	23.75283	4.67768	0.06027
9	13.306	BB	0.0488	12.34088	3.91704	0.03131

Sample Name: SAFFRON KASHMIR (BMV)

Peak #	RetTime [min]	Type	Width [min]	Area [pA*s]	Height [pA]	Area %
10	14.586	BV	0.0589	28.62744	7.26860	0.07264
11	14.740	VB	0.0537	192.59238	52.62415	0.48867
12	15.207	BB	0.0770	4884.98291	813.93536	12.39471
13	16.738	BV	0.0406	9.30352	3.43948	0.02361
14	16.862	VV	0.0685	44.90114	10.80733	0.11393
15	17.037	VV	0.0577	30.64852	8.17660	0.07776
16	17.148	VB	0.0638	53.95132	12.14468	0.13689
17	17.348	BV	0.0581	19.90488	5.38666	0.05050
18	17.624	VB	0.0854	1.33950e4	1993.77344	33.98718
19	18.060	BB	0.0442	150.01614	52.70880	0.38064
20	18.656	BB	0.0479	51.50975	15.85375	0.13070
21	18.873	BB	0.0529	18.01656	5.27093	0.04571
22	19.057	BB	0.0611	41.65063	10.31257	0.10568
23	19.833	BV	0.0599	49.48376	11.57784	0.12556
24	19.962	VB	0.0803	28.47856	4.66143	0.07226
25	21.100	BB	0.0450	8.84824	3.12460	0.02245
26	22.118	BV	0.0730	17.81797	3.40601	0.04521
27	22.296	VB	0.0483	218.56862	70.27092	0.55458
28	22.507	BB	0.0581	128.73668	33.28009	0.32664
29	23.030	BB	0.0595	43.10813	10.81617	0.10938
30	23.236	BV	0.0636	578.00482	138.88809	1.46658
31	23.418	VV	0.0602	536.51282	132.51231	1.36130
32	23.515	VV	0.0550	25.16379	6.83392	0.06385
33	23.673	VV	0.0476	784.77588	257.12350	1.99122
34	23.852	VB	0.0528	375.88168	107.52837	0.95373
35	23.993	BV	0.0524	35.15459	9.91647	0.08920
36	24.073	VV	0.0573	70.06002	18.89197	0.17776
37	24.180	VV	0.0494	255.85344	79.75895	0.64918
38	24.260	VV	0.0592	151.81146	36.02020	0.38519
39	24.447	VB	0.0501	49.61159	15.59919	0.12588
40	24.614	BB	0.0467	18.72386	6.11361	0.04751
41	25.138	BV	0.0646	5472.86523	1191.61047	13.88635
42	25.324	VB	0.0496	664.16473	206.28775	1.68519
43	25.686	BV	0.0730	20.09091	3.97055	0.05098
44	25.844	VB	0.0863	24.46774	3.74263	0.06208
45	26.339	BB	0.0505	12.36199	3.74200	0.03137
46	26.931	BB	0.0522	11.13972	3.31498	0.02826
47	27.168	BB	0.0628	17.34178	3.76191	0.04400
48	27.389	BB	0.0491	74.66338	23.50329	0.18944
49	27.636	BB	0.0520	89.75994	26.83054	0.22775
50	27.993	BB	0.0476	9.68981	3.17483	0.02459
51	28.229	BB	0.0504	11.03323	3.34911	0.02799
52	28.689	BV	0.0669	49.28504	11.08774	0.12505
53	28.890	VB	0.1010	30.59984	3.96465	0.07764
54	29.535	BB	0.0611	117.99385	29.22780	0.29939
55	30.035	BB	0.0611	106.30716	26.33114	0.26973
56	34.130	BB	0.0699	3812.75244	729.81787	9.67413
57	34.727	BB	0.0737	25.68268	5.28463	0.06516
58	35.884	BB	0.0554	20.92049	6.04445	0.05308
59	37.092	BB	0.0440	6.36022	2.31555	0.01614
60	37.631	BB	0.0503	13.60715	4.14909	0.03453
61	40.460	BB	0.0693	11.31293	2.57365	0.02870
62	41.757	BB	0.0583	9.77328	2.57104	0.02480
63	46.162	BB	0.1949	435.05234	26.86725	1.10386

Peak #	RetTime [min]	Type	Width [min]	Area [pA*s]	Height [pA]	Area %
Totals :				3.94118e4	6781.28406	

=====
*** End of Report ***