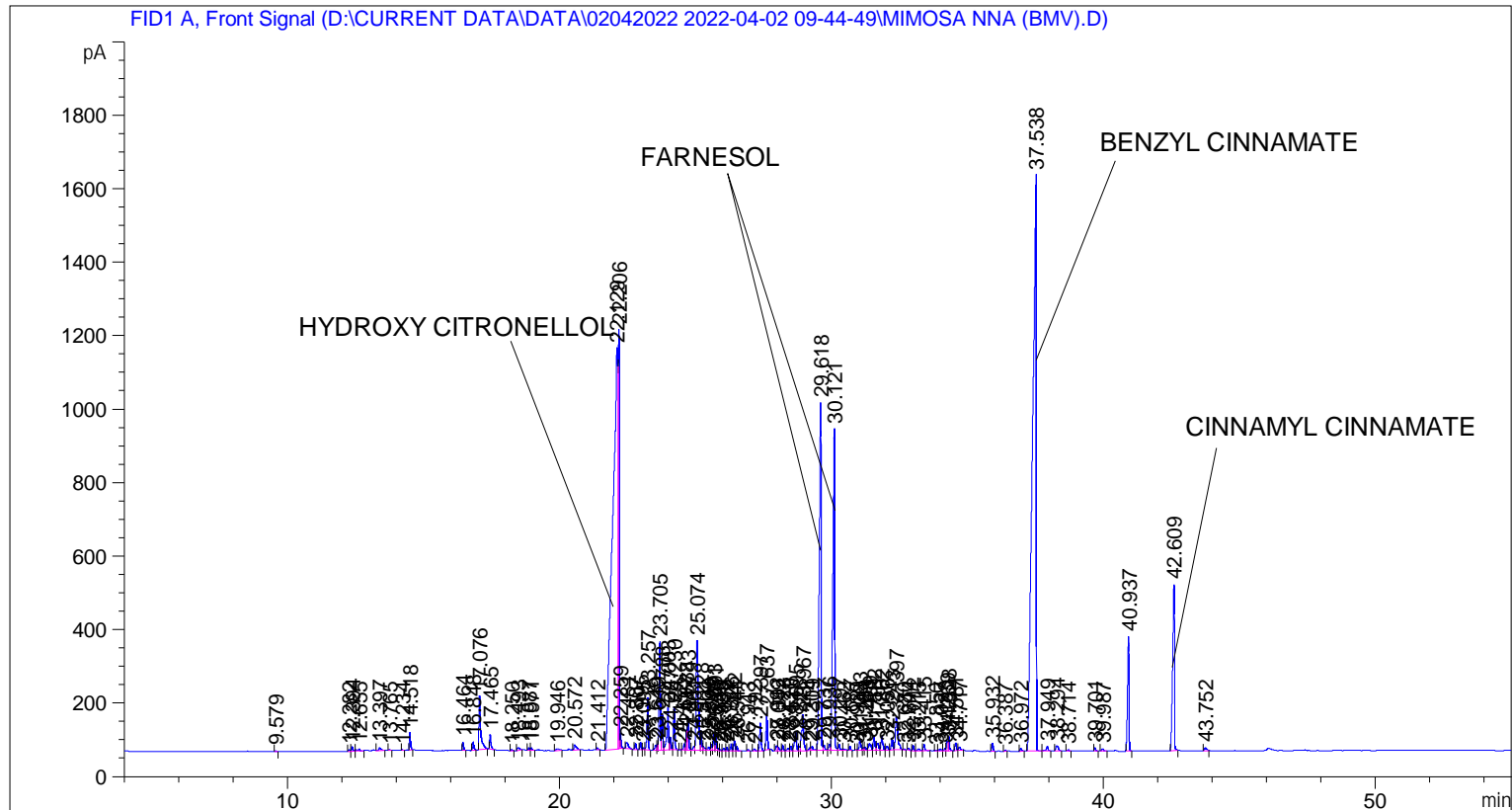


```

=====
Acq. Operator   : SYSTEM                               Seq. Line :    6
Acq. Instrument : BMV_NEW_GC_7820                     Location  : Vial 106
Injection Date  : 02-Apr-22 3:30:05 PM                 Inj       :    1
                                                    Inj Volume: 0.5 µl

Acq. Method     : D:\CURRENT DATA\DATA\02042022 2022-04-02 09-44-49\UNIVERSAL BMV.M
Last changed    : 02-Apr-22 9:45:00 AM by SYSTEM
Analysis Method : C:\CHEM32\2\METHODS\COOLING.M
Last changed    : 07-Apr-22 1:17:00 PM by SYSTEM
                  (modified after loading)

Additional Info : Peak(s) manually integrated
  
```



Area Percent Report

```

Sorted By      :      Signal
Multiplier     :      1.0000
Dilution       :      1.0000
Do not use Multiplier & Dilution Factor with ISTDs
  
```

Signal 1: FID1 A, Front Signal

Peak #	RetTime [min]	Type	Width [min]	Area [pA*s]	Height [pA]	Area %
1	9.579	BB	0.0455	5.59417	1.94729	0.00971
2	12.282	BV	0.0607	20.32791	5.07493	0.03528
3	12.394	VB	0.0480	41.18546	12.97631	0.07149
4	12.655	BV	0.0840	35.62472	5.69356	0.06184
5	13.397	BB	0.0750	44.29021	7.83494	0.07688
6	13.765	BB	0.0455	9.25584	3.13350	0.01607
7	14.234	BB	0.0452	6.31552	2.21756	0.01096

Sample Name: MIMOSA NNA (BMV)

Peak #	RetTime [min]	Type	Width [min]	Area [pA*s]	Height [pA]	Area %
8	14.518	BB	0.0457	143.59602	48.21563	0.24925
9	16.464	BB	0.0466	70.15990	23.00556	0.12178
10	16.848	BB	0.0486	71.36081	22.14350	0.12387
11	17.076	BB	0.0647	659.97913	146.22353	1.14558
12	17.465	BB	0.0517	136.24333	39.04940	0.23649
13	18.250	BB	0.0538	11.44728	3.19300	0.01987
14	18.493	BB	0.0719	39.37624	7.41872	0.06835
15	18.887	BV	0.0436	17.91345	6.40857	0.03109
16	18.971	VB	0.0585	26.64163	6.68227	0.04624
17	19.946	BB	0.1016	39.99324	5.03672	0.06942
18	20.572	BB	0.0804	84.72234	14.88793	0.14706
19	21.412	BB	0.0494	17.43568	5.29715	0.03026
20	22.129	BV	0.1594	1.44376e4	1091.00952	25.06055
21	22.206	VV	0.0478	3987.22656	1139.86877	6.92097
22	22.259	VB	0.0463	125.01947	42.51047	0.21701
23	22.481	BB	0.0882	105.42472	15.92479	0.18299
24	22.807	BB	0.0484	49.13042	15.75749	0.08528
25	22.995	BV	0.0460	61.20562	20.98881	0.10624
26	23.095	VV	0.0467	18.31677	6.15494	0.03179
27	23.257	VB	0.0492	455.86084	142.97003	0.79128
28	23.549	BV	0.0557	49.48173	13.22410	0.08589
29	23.619	VV	0.0367	41.64587	16.95423	0.07229
30	23.705	VV	0.0484	917.25586	294.10431	1.59216
31	23.788	VV	0.0461	298.52887	99.16615	0.51818
32	24.003	VV	0.0617	487.35477	114.46101	0.84594
33	24.087	VV	0.0494	117.48724	35.65210	0.20393
34	24.230	VB	0.0495	372.80066	115.90244	0.64710
35	24.452	BV	0.0372	3.85241	1.85505	0.00669
36	24.602	VV	0.0500	54.69609	15.95686	0.09494
37	24.688	VV	0.0442	162.05859	56.90458	0.28130
38	24.743	VV	0.0504	300.80728	89.17509	0.52214
39	24.961	VV	0.0653	45.78390	10.21131	0.07947
40	25.074	VV	0.0738	1528.16870	298.22202	2.65257
41	25.228	VV	0.0488	166.14282	52.67400	0.28839
42	25.301	VV	0.0675	52.69044	10.33810	0.09146
43	25.500	VV	0.0790	55.41154	10.25530	0.09618
44	25.599	VV	0.0480	51.14088	16.11189	0.08877
45	25.693	VV	0.0482	165.63733	50.59044	0.28751
46	25.771	VV	0.0478	138.63605	45.13600	0.24064
47	25.850	VV	0.0415	21.35845	7.67194	0.03707
48	25.925	VV	0.0417	6.22363	2.29004	0.01080
49	26.056	VV	0.0618	27.64183	7.19161	0.04798
50	26.172	VV	0.0486	28.63892	9.13415	0.04971
51	26.326	VV	0.0492	57.57627	18.07998	0.09994
52	26.442	VV	0.0468	87.04839	27.63264	0.15110
53	26.541	VB	0.0485	39.85399	12.75380	0.06918
54	26.943	BB	0.0464	11.30783	3.72200	0.01963
55	27.192	BV	0.0818	24.98038	4.36463	0.04336
56	27.397	VB	0.0532	275.99411	76.33841	0.47907
57	27.637	BB	0.0579	377.95856	102.76250	0.65606
58	27.992	BV	0.0523	49.71255	13.70082	0.08629
59	28.049	VV	0.0563	42.24141	10.41065	0.07332
60	28.223	VV	0.0501	49.30927	15.10746	0.08559
61	28.431	VV	0.0752	34.75032	6.84667	0.06032

Sample Name: MIMOSA NNA (BMV)

Peak #	RetTime [min]	Type	Width [min]	Area [pA*s]	Height [pA]	Area %
62	28.520	VV	0.0465	36.43632	12.32190	0.06325
63	28.695	VV	0.0750	254.35095	50.25700	0.44150
64	28.828	VV	0.0441	34.55280	12.18125	0.05998
65	28.967	VV	0.0738	528.65393	99.74101	0.91763
66	29.214	VV	0.0560	29.34603	7.43550	0.05094
67	29.309	VV	0.0813	67.37723	11.02507	0.11695
68	29.618	VV	0.0647	4514.13770	946.19769	7.83558
69	29.737	VV	0.0773	78.54890	14.25796	0.13634
70	29.936	VV	0.0554	60.45468	17.04355	0.10494
71	30.121	VV	0.0642	4137.36182	874.98187	7.18157
72	30.297	VV	0.0651	73.49046	15.85371	0.12756
73	30.462	VB	0.0843	26.18427	4.11181	0.04545
74	30.687	BB	0.0491	36.44128	11.47073	0.06325
75	30.929	BV	0.0482	8.92497	2.87529	0.01549
76	31.063	VV	0.0621	128.58121	29.95474	0.22319
77	31.184	VV	0.0508	23.44979	7.24709	0.04070
78	31.253	VV	0.0521	32.21664	9.38135	0.05592
79	31.409	VV	0.0850	118.28160	18.89158	0.20531
80	31.582	VV	0.0567	144.58868	38.55725	0.25098
81	31.701	VV	0.0748	106.65217	19.51002	0.18513
82	31.862	VV	0.0633	172.26181	37.73623	0.29901
83	32.056	VV	0.0647	52.01546	10.70885	0.09029
84	32.243	VV	0.0542	117.72327	33.34391	0.20434
85	32.397	VB	0.0888	573.34796	89.43645	0.99521
86	32.680	BB	0.0377	6.17974	2.51062	0.01073
87	32.844	BB	0.0516	17.79536	5.24754	0.03089
88	33.012	BB	0.0524	47.94854	14.19919	0.08323
89	33.215	BV	0.0790	30.33989	5.28215	0.05266
90	33.415	VB	0.0547	59.37482	16.60881	0.10306
91	33.850	BV	0.0444	4.87105	1.75408	0.00846
92	34.027	VV	0.0866	25.53203	4.16280	0.04432
93	34.183	VV	0.0597	24.68867	5.91846	0.04285
94	34.269	VV	0.0441	81.08480	26.98676	0.14075
95	34.328	VB	0.0529	138.82291	38.62451	0.24097
96	34.581	BV	0.0551	73.36489	20.80619	0.12735
97	34.717	VB	0.0816	48.46675	8.88993	0.08413
98	35.932	BB	0.0486	68.90723	21.38774	0.11961
99	36.387	BB	0.0477	6.61826	2.10250	0.01149
100	36.972	BB	0.0617	29.47096	7.21041	0.05116
101	37.538	BV	0.1188	1.51471e4	1566.65430	26.29213
102	37.949	VB	0.0672	60.06130	12.25763	0.10425
103	38.294	BB	0.0844	83.17322	12.87271	0.14437
104	38.714	BB	0.0596	12.35197	2.96315	0.02144
105	39.701	BB	0.0516	31.73416	9.34211	0.05508
106	39.987	BB	0.0776	26.67544	5.50062	0.04630
107	40.937	BB	0.0545	1190.96802	312.20358	2.06727
108	42.609	BB	0.0651	2129.41333	451.11493	3.69621
109	43.752	BB	0.0724	45.06085	8.03670	0.07822

Totals : 5.76108e4 9443.68642

=====  
 \*\*\* End of Report \*\*\*