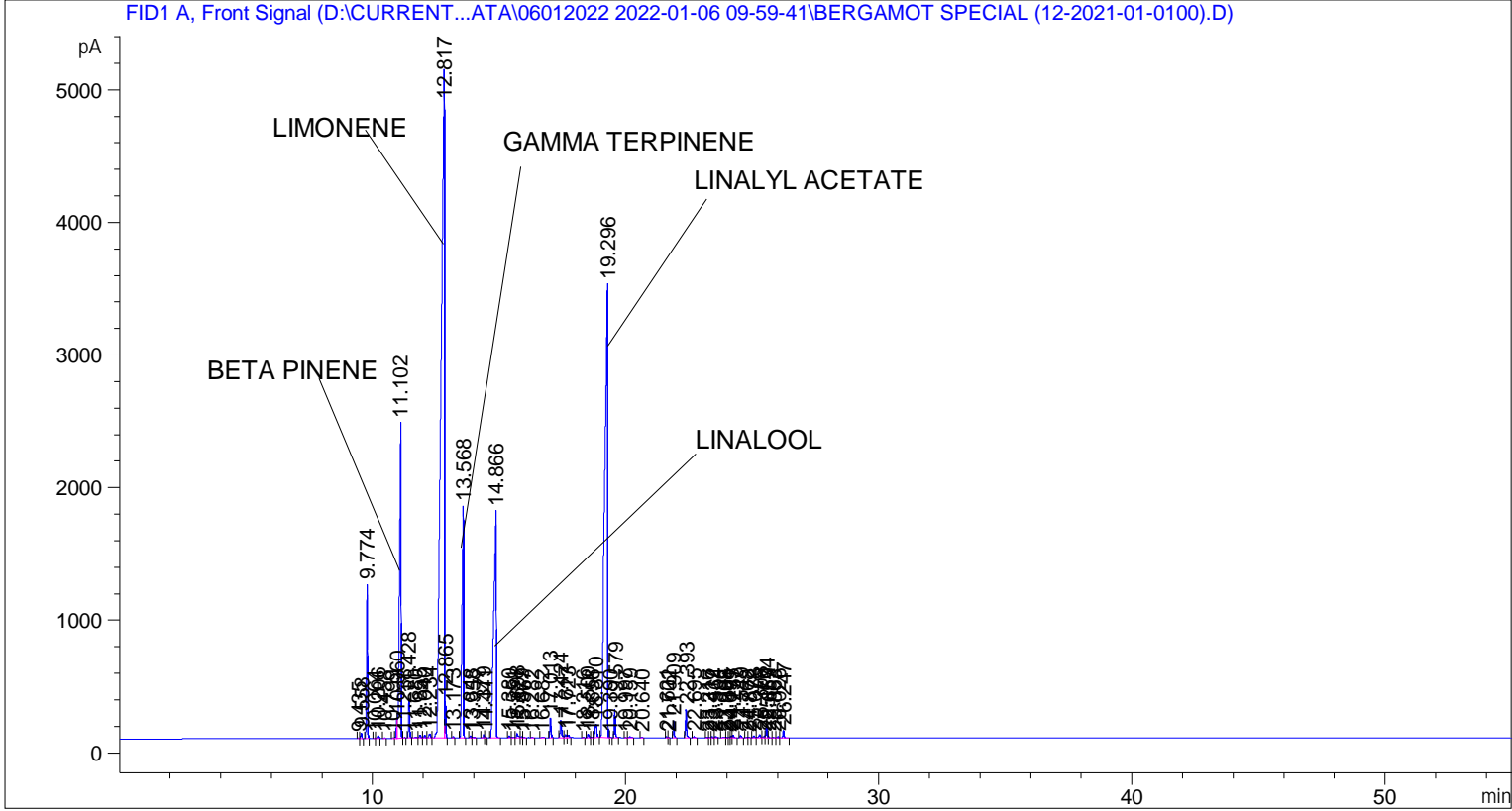


```

=====
Acq. Operator   : SYSTEM                               Seq. Line :    3
Acq. Instrument : BMV_NEW_GC_7820                     Location  : Vial 103
Injection Date  : 06-Jan-22 12:20:34 PM                Inj       :    1
                                                    Inj Volume: 0.5 µl

Acq. Method    : D:\CURRENT DATA\DATA\06012022 2022-01-06 09-59-41\UNIVERSAL BMV.M
Last changed   : 06-Jan-22 9:59:51 AM by SYSTEM
Analysis Method: C:\CHEM32\2\METHODS\COOLING.M
Last changed   : 02-Mar-22 5:01:47 PM by SYSTEM
                (modified after loading)

Additional Info : Peak(s) manually integrated
  
```



=====
 Area Percent Report
 =====

```

Sorted By      :      Signal
Multiplier     :      1.0000
Dilution       :      1.0000
Do not use Multiplier & Dilution Factor with ISTDs
  
```

Signal 1: FID1 A, Front Signal

Peak #	RetTime [min]	Type	Width [min]	Area [pA*s]	Height [pA]	Area %
1	9.435	BV	0.0420	8.13357	3.06084	0.00709
2	9.558	VB	0.0427	104.16936	38.33218	0.09075
3	9.774	BB	0.0460	3367.84155	1154.93140	2.93407
4	10.064	BV	0.0443	6.71139	2.34839	0.00585
5	10.206	VB	0.0513	74.33835	22.08335	0.06476
6	10.458	BB	0.0467	6.37505	2.08582	0.00555
7	10.799	BV	0.0535	10.01127	2.95568	0.00872

Peak #	RetTime [min]	Type	Width [min]	Area [pA*s]	Height [pA]	Area %
8	10.960	VV	0.0577	529.96814	151.74232	0.46171
9	11.102	VV	0.0622	1.02160e4	2375.87158	8.90022
10	11.238	VB	0.0504	16.73822	4.83955	0.01458
11	11.428	BB	0.0467	876.19122	294.70987	0.76334
12	11.680	BV	0.0623	21.51015	4.79650	0.01874
13	11.855	VV	0.0611	85.37655	22.09686	0.07438
14	12.040	VV	0.0522	63.98081	19.05326	0.05574
15	12.234	VV	0.0740	137.24083	30.22513	0.11956
16	12.817	VV	0.1107	4.53990e4	5009.09912	39.55169
17	12.865	VB	0.0359	628.94366	272.45844	0.54794
18	13.173	BB	0.0418	22.91639	8.68549	0.01996
19	13.568	BB	0.0548	7012.91699	1746.66956	6.10966
20	13.848	BV	0.0415	41.91582	15.53618	0.03652
21	13.958	VB	0.0665	35.59710	7.22794	0.03101
22	14.379	BV	0.0461	65.41479	21.73080	0.05699
23	14.441	VB	0.0454	22.48122	7.20834	0.01959
24	14.866	BB	0.0841	1.15661e4	1705.13794	10.07638
25	15.380	BB	0.0535	58.18790	15.60397	0.05069
26	15.551	BV	0.0507	19.69514	5.93962	0.01716
27	15.698	VB	0.0610	138.36310	31.64509	0.12054
28	15.879	BV	0.0465	22.56211	7.21710	0.01966
29	15.967	VB	0.0529	12.48872	3.47353	0.01088
30	16.282	BB	0.0478	15.98066	5.06580	0.01392
31	16.682	BB	0.0869	24.36539	3.79377	0.02123
32	17.013	BB	0.0502	471.31494	147.88068	0.41061
33	17.424	BB	0.0617	527.48987	131.77194	0.45955
34	17.617	BV	0.0749	96.64558	20.15281	0.08420
35	17.723	VB	0.0550	71.92883	19.52766	0.06266
36	18.316	BB	0.0506	13.67184	4.13746	0.01191
37	18.500	BV	0.0598	112.40158	27.99118	0.09792
38	18.656	VV	0.0564	23.75532	6.54153	0.02070
39	18.810	VB	0.0790	495.62753	99.62877	0.43179
40	19.296	BV	0.1077	2.94702e4	3414.92749	25.67446
41	19.390	VB	0.0462	16.02527	5.16510	0.01396
42	19.579	BB	0.0430	602.24585	212.68671	0.52468
43	19.997	BB	0.0430	5.17276	1.88320	0.00451
44	20.159	BB	0.0801	39.91764	6.93879	0.03478
45	20.640	BB	0.0577	14.80839	3.78389	0.01290
46	21.621	BV	0.0476	27.23037	8.69005	0.02372
47	21.702	VB	0.0392	6.47435	2.42383	0.00564
48	21.909	BB	0.0462	367.40997	125.43064	0.32009
49	22.393	BB	0.0470	655.28162	212.50102	0.57088
50	22.695	BB	0.0661	34.67999	7.48261	0.03021
51	23.216	BV	0.0492	17.57656	5.51457	0.01531
52	23.317	VV	0.0535	11.16780	3.29800	0.00973
53	23.432	VV	0.0460	23.61560	8.11472	0.02057
54	23.564	VB	0.0506	40.29571	12.49631	0.03511
55	23.908	BV	0.0732	26.68182	5.00786	0.02325
56	23.988	VV	0.0530	20.56079	6.31576	0.01791
57	24.091	VV	0.0522	8.86571	2.64082	0.00772
58	24.175	VV	0.0452	43.81585	14.93520	0.03817
59	24.257	VB	0.0488	55.21837	17.06450	0.04811
60	24.549	BB	0.0557	58.29417	16.30896	0.05079
61	24.768	BV	0.0554	9.79455	2.82747	0.00853

Peak #	RetTime [min]	Type	Width [min]	Area [pA*s]	Height [pA]	Area %
62	24.872	VB	0.0570	15.81030	4.01129	0.01377
63	25.078	BV	0.0637	50.15967	12.25640	0.04370
64	25.308	VV	0.0677	110.15388	23.91907	0.09597
65	25.470	VV	0.0574	46.82407	11.76318	0.04079
66	25.574	VV	0.0495	307.65005	95.69807	0.26803
67	25.659	VB	0.0451	34.24945	11.72164	0.02984
68	25.863	BV	0.0476	13.10034	4.17596	0.01141
69	26.026	VV	0.0523	33.14863	9.85052	0.02888
70	26.247	VB	0.0503	193.25128	58.90118	0.16836

Totals : 1.14784e5 1.77820e4

=====
*** End of Report ***