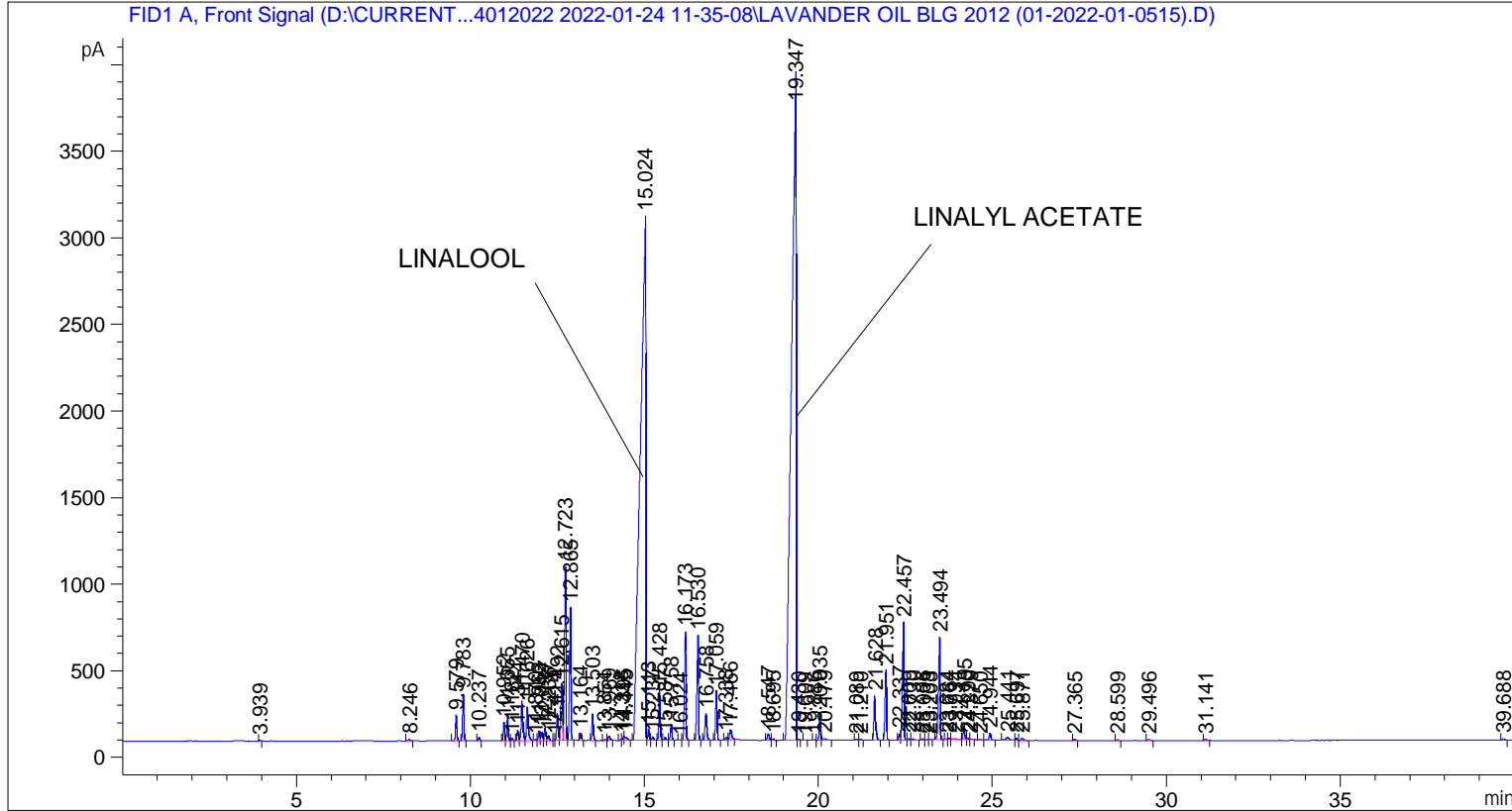


```

=====
Acq. Operator   : SYSTEM                               Seq. Line :    5
Acq. Instrument : BMV_NEW_GC_7820                     Location  : Vial 105
Injection Date  : 24-Jan-22 4:06:17 PM                Inj       :    1
                                                    Inj Volume: 0.5 µl

Acq. Method    : D:\CURRENT DATA\DATA\24012022 2022-01-24 11-35-08\UNIVERSAL BMV.M
Last changed   : 24-Jan-22 11:35:18 AM by SYSTEM
Analysis Method: C:\CHEM32\2\METHODS\COOLING.M
Last changed   : 04-Mar-22 10:37:57 AM by SYSTEM
                (modified after loading)
  
```



=====
 Area Percent Report
 =====

```

Sorted By      :      Signal
Multiplier    :      1.0000
Dilution      :      1.0000
Do not use Multiplier & Dilution Factor with ISTDs
  
```

Signal 1: FID1 A, Front Signal

Peak #	RetTime [min]	Type	Width [min]	Area [pA*s]	Height [pA]	Area %
1	3.939	BB	0.0367	13.45273	5.47337	0.01402
2	8.246	BB	0.0536	39.63316	10.14184	0.04132
3	9.579	BB	0.0416	391.27408	149.06325	0.40788
4	9.783	BB	0.0409	707.06158	266.70703	0.73707
5	10.237	BB	0.0435	54.27578	18.91948	0.05658
6	10.952	BV	0.0406	278.59329	106.17000	0.29042
7	11.055	VV	0.0436	422.71509	151.15166	0.44066
8	11.182	VB	0.0412	39.38543	14.27255	0.04106

Peak #	RetTime [min]	Type	Width [min]	Area [pA*s]	Height [pA]	Area %
9	11.344	BV	0.0395	159.96605	61.26886	0.16676
10	11.470	VV	0.0496	758.20081	229.05972	0.79038
11	11.626	VB	0.0531	686.24774	195.03551	0.71537
12	11.870	BV	0.0545	28.69545	7.87819	0.02991
13	11.962	VV	0.0435	169.51363	59.06602	0.17671
14	12.049	VV	0.0445	139.14825	48.42588	0.14505
15	12.137	VV	0.0450	210.28476	70.12531	0.21921
16	12.236	VB	0.0458	78.07187	26.15066	0.08139
17	12.414	BV	0.0374	9.81682	3.89883	0.01023
18	12.492	VV	0.0482	486.67029	156.95815	0.50733
19	12.615	VV	0.0569	1164.44519	332.10248	1.21387
20	12.723	VV	0.0461	3015.54077	1003.62537	3.14353
21	12.865	VB	0.0439	2156.04028	765.15625	2.24755
22	13.164	BB	0.0415	112.92288	41.82677	0.11772
23	13.503	BB	0.0418	413.29446	151.60919	0.43084
24	13.854	BV	0.0469	14.70742	4.91675	0.01533
25	13.969	VB	0.0549	90.14455	23.93599	0.09397
26	14.318	BV	0.0410	19.63135	7.37662	0.02046
27	14.395	VV	0.0411	58.57462	21.30141	0.06106
28	14.445	VB	0.0666	74.08405	16.44359	0.07723
29	15.024	BV	0.1329	3.28958e4	3025.38281	34.29193
30	15.113	VV	0.0399	164.62161	64.15742	0.17161
31	15.237	VB	0.0465	59.50430	19.56094	0.06203
32	15.428	BB	0.0431	787.21393	286.02103	0.82063
33	15.587	BV	0.0477	47.64687	15.15380	0.04967
34	15.758	VB	0.0437	258.96960	92.35751	0.26996
35	16.024	BV	0.0453	8.84743	3.10044	0.00922
36	16.173	VB	0.0483	1951.09827	626.40973	2.03391
37	16.530	BB	0.0482	1930.41528	604.95612	2.01235
38	16.758	BB	0.0547	556.31293	155.68970	0.57992
39	17.059	BB	0.0474	848.76300	287.58813	0.88479
40	17.338	BV	0.0478	51.09256	16.64619	0.05326
41	17.466	VB	0.0635	235.70178	56.67442	0.24571
42	18.547	BV	0.0579	143.43018	37.26035	0.14952
43	18.695	VB	0.0668	34.32838	7.72740	0.03579
44	19.347	BV	0.1145	3.62145e4	3859.99658	37.75155
45	19.430	VB	0.0408	17.89338	6.36146	0.01865
46	19.609	BB	0.0478	5.00793	1.54630	0.00522
47	19.886	BV	0.0411	9.79924	3.92418	0.01022
48	20.035	VV	0.0441	429.54678	151.37097	0.44778
49	20.179	VB	0.0942	64.37132	9.02929	0.06710
50	21.089	BV	0.0479	21.03928	6.65321	0.02193
51	21.210	VB	0.0437	14.75805	5.11323	0.01538
52	21.628	BB	0.0521	876.06964	255.15660	0.91325
53	21.951	BB	0.0480	1217.59753	405.64621	1.26928
54	22.337	BV	0.0442	102.36476	35.98210	0.10671
55	22.457	VV	0.0466	2251.93604	680.97162	2.34751
56	22.609	VV	0.0823	33.37250	6.46045	0.03479
57	22.730	VB	0.0721	38.45669	7.33780	0.04009
58	23.006	BV	0.0486	17.26657	5.36113	0.01800
59	23.138	VV	0.0462	7.80017	2.58698	0.00813
60	23.203	VB	0.0388	4.94482	1.87331	0.00515
61	23.494	BB	0.0513	1992.59363	590.79181	2.07716
62	23.684	BV	0.0535	13.16352	3.79319	0.01372

Peak #	RetTime [min]	Type	Width [min]	Area [pA*s]	Height [pA]	Area %
63	23.764	VV	0.0487	28.45195	9.05627	0.02966
64	23.934	VV	0.1058	51.24255	6.17804	0.05342
65	24.195	VV	0.0474	236.04152	77.71930	0.24606
66	24.290	VV	0.0510	25.15480	7.34430	0.02622
67	24.379	VB	0.0400	7.13404	2.77030	0.00744
68	24.650	BV	0.0620	20.56049	4.80039	0.02143
69	24.944	VB	0.0526	133.65453	39.42243	0.13933
70	25.441	BB	0.0846	110.97235	17.35344	0.11568
71	25.697	BV	0.0465	35.48691	12.01206	0.03699
72	25.871	VB	0.0651	52.12433	12.37752	0.05434
73	27.365	BB	0.0564	20.98809	5.51371	0.02188
74	28.599	BB	0.0544	17.77107	5.13444	0.01853
75	29.496	BB	0.0657	28.00286	6.08299	0.02919
76	31.141	BB	0.0569	25.19103	7.02029	0.02626
77	39.688	BB	0.0607	37.18774	9.29707	0.03877

Totals : 9.59286e4 1.55088e4

=====
*** End of Report ***