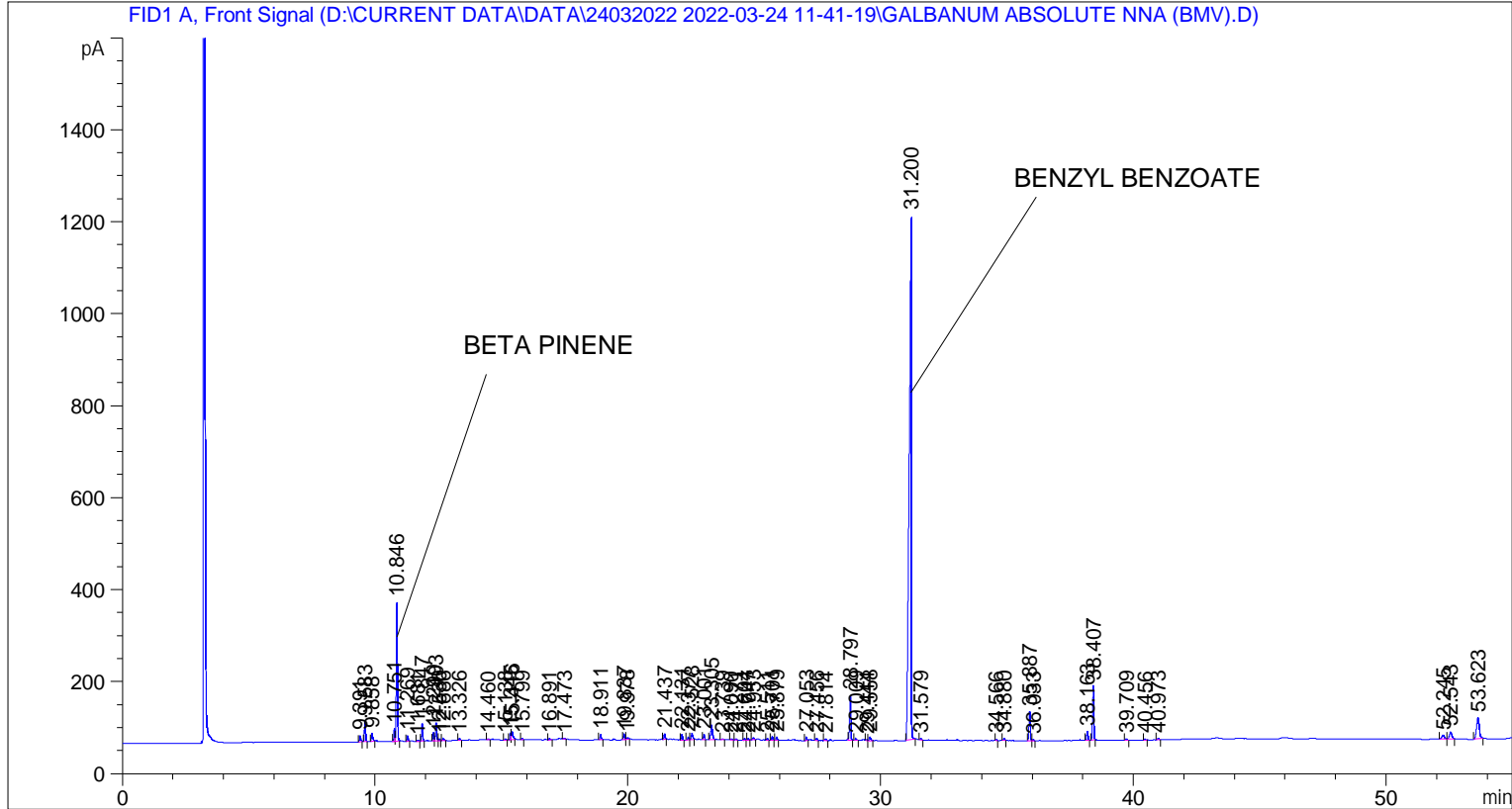


```
=====
Acq. Operator   : SYSTEM                               Seq. Line :    4
Acq. Instrument : BMV_NEW_GC_7820                     Location  : Vial 104
Injection Date  : 24-Mar-22 3:14:34 PM                Inj       :    1
                                                    Inj Volume: 0.5 µl

Acq. Method     : D:\CURRENT DATA\DATA\24032022 2022-03-24 11-41-19\UNIVERSAL BMV.M
Last changed    : 24-Mar-22 11:41:30 AM by SYSTEM
Analysis Method : C:\CHEM32\2\METHODS\UNIVERSAL BMV.M
Last changed    : 24-Mar-22 4:24:30 PM by SYSTEM
                (modified after loading)

Additional Info : Peak(s) manually integrated
=====
```



=====  
 Area Percent Report  
 =====

```
Sorted By      : Signal
Multiplier     : 1.0000
Dilution       : 1.0000
Do not use Multiplier & Dilution Factor with ISTDs
```

Signal 1: FID1 A, Front Signal

Peak #	RetTime [min]	Type	Width [min]	Area [pA*s]	Height [pA]	Area %
1	9.391	BB	0.0478	40.84662	12.95652	0.37335
2	9.583	BB	0.0475	136.36929	44.85662	1.24646
3	9.858	BB	0.0506	65.02978	18.70899	0.59439
4	10.751	BV	0.0431	76.77708	27.92964	0.70177
5	10.846	VB	0.0474	916.91638	302.52640	8.38090
6	11.269	BB	0.0457	36.13324	12.13346	0.33027
7	11.681	BB	0.0488	8.37224	2.65667	0.07652

Peak #	RetTime [min]	Type	Width [min]	Area [pA*s]	Height [pA]	Area %
8	11.847	BB	0.0451	109.63758	37.49890	1.00212
9	12.299	BV	0.0459	55.42900	18.50298	0.50664
10	12.403	VV	0.0488	123.80208	39.20421	1.13159
11	12.530	VB	0.0478	14.32471	4.41946	0.13093
12	12.686	BB	0.0557	16.96269	4.52695	0.15504
13	13.326	BB	0.0531	15.98406	4.64660	0.14610
14	14.460	BB	0.0551	8.31398	2.24943	0.07599
15	15.138	BB	0.0488	9.62410	3.05060	0.08797
16	15.345	BV	0.0466	46.41385	15.66344	0.42424
17	15.416	VB	0.0579	70.45254	17.53828	0.64396
18	15.799	BB	0.0483	8.95482	2.87412	0.08185
19	16.891	BB	0.0515	11.80402	3.48797	0.10789
20	17.473	BB	0.0409	4.29708	1.73278	0.03928
21	18.911	BB	0.0487	36.51869	11.28790	0.33379
22	19.837	BB	0.0491	38.29218	11.72877	0.35000
23	19.978	BB	0.0652	16.42375	3.29460	0.15012
24	21.437	BB	0.0501	40.32761	12.33671	0.36861
25	22.131	BB	0.0480	37.59867	12.53466	0.34366
26	22.377	BB	0.0494	20.12381	6.27831	0.18394
27	22.528	BB	0.0628	61.42043	14.11450	0.56140
28	23.001	BB	0.0458	32.50815	11.20547	0.29713
29	23.305	BB	0.0689	146.29724	31.06581	1.33720
30	23.739	BB	0.0608	10.62588	2.54086	0.09712
31	24.090	BB	0.0526	8.68068	2.55907	0.07934
32	24.271	BB	0.0564	10.60397	2.91652	0.09692
33	24.604	BB	0.0420	8.82778	3.43435	0.08069
34	24.747	BB	0.0485	12.23267	3.80105	0.11181
35	24.953	BB	0.0508	14.59615	4.62528	0.13341
36	25.511	BB	0.0418	9.68768	3.66408	0.08855
37	25.701	BB	0.0461	22.73382	7.77876	0.20779
38	25.879	BB	0.0483	22.27621	7.16781	0.20361
39	27.053	BV	0.0526	24.52173	7.41183	0.22414
40	27.456	BB	0.0513	16.14864	4.67116	0.14760
41	27.814	BB	0.0619	14.04004	3.56834	0.12833
42	28.797	BB	0.0502	325.70465	96.98924	2.97704
43	29.009	BB	0.0505	12.95152	3.92081	0.11838
44	29.444	BV	0.0507	8.44900	2.48240	0.07723
45	29.558	VB	0.0641	33.35099	7.32319	0.30484
46	31.200	BB	0.0757	6907.52197	1139.72754	63.13693
47	31.579	BB	0.0458	9.55575	3.30070	0.08734
48	34.566	BB	0.0494	9.73914	2.95757	0.08902
49	34.880	BB	0.0505	15.74736	4.76663	0.14394
50	35.887	BB	0.0488	202.55190	62.53535	1.85139
51	36.033	BB	0.0529	10.15160	2.96919	0.09279
52	38.163	BB	0.0507	68.13332	20.01286	0.62276
53	38.407	BB	0.0508	415.13022	118.82239	3.79442
54	39.709	BB	0.0544	13.43072	4.08210	0.12276
55	40.456	BB	0.0625	8.77314	2.11176	0.08019
56	40.973	BB	0.0571	10.85803	3.00870	0.09925
57	52.245	BB	0.0921	61.26483	8.81552	0.55998
58	52.543	BB	0.1020	99.69115	14.72429	0.91121
59	53.623	BB	0.0975	346.60559	46.21783	3.16808

Totals : 1.09405e4 2289.91793

=====

\*\*\* End of Report \*\*\*