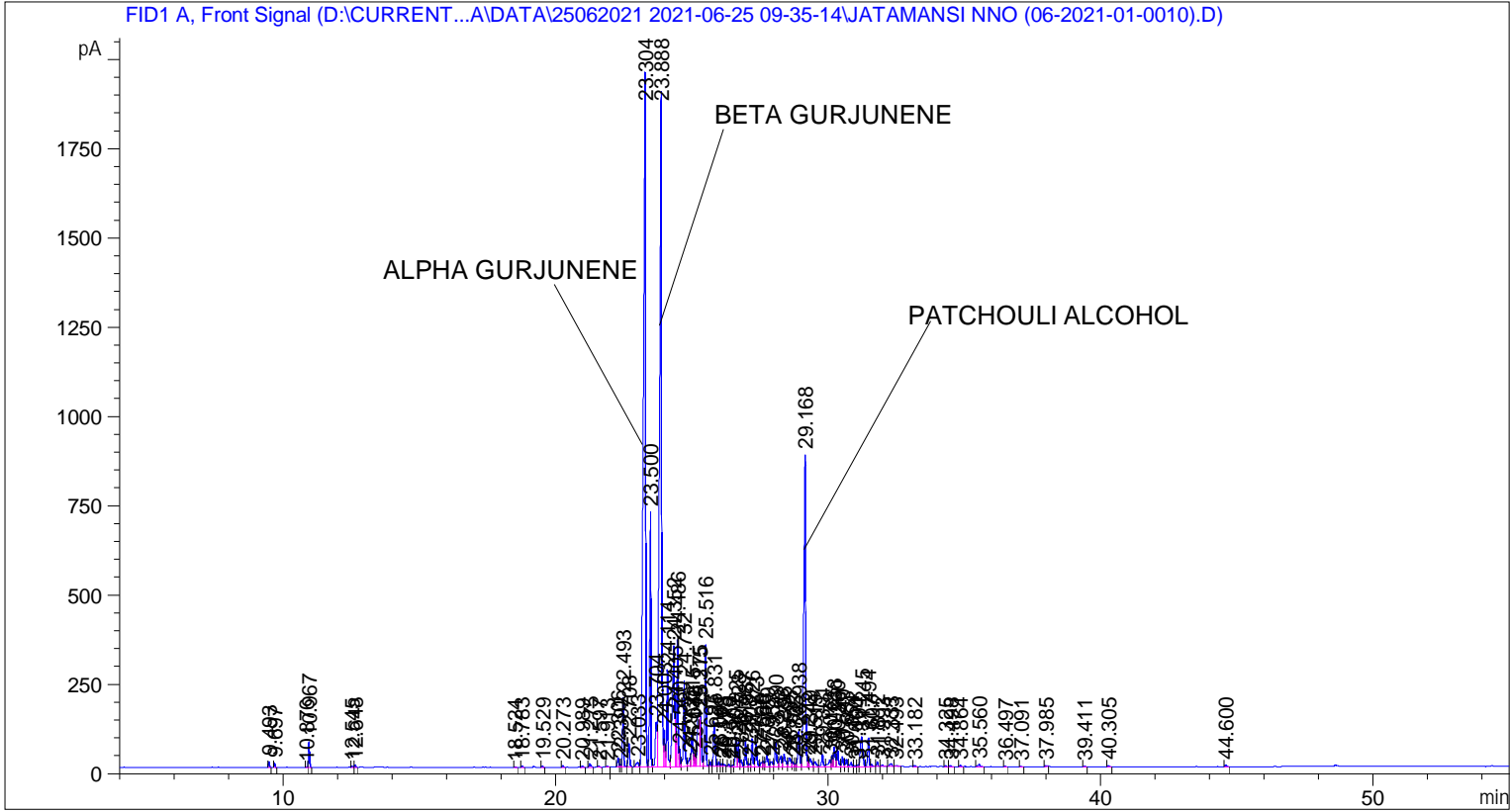


```

=====
Acq. Operator   : SYSTEM                               Seq. Line :    2
Acq. Instrument : BMV_NEW_GC_7820                     Location  : Vial 102
Injection Date  : 25-Jun-21 10:54:27 AM                Inj       :    1
                                                    Inj Volume: 0.5 µl

Acq. Method     : D:\CURRENT DATA\DATA\25062021 2021-06-25 09-35-14\UNIVERSAL BMV.M
Last changed    : 25-Jun-21 9:35:25 AM by SYSTEM
Analysis Method : C:\CHEM32\2\METHODS\COOLING.M
Last changed    : 16-May-22 9:17:22 AM by SYSTEM
                (modified after loading)

Additional Info : Peak(s) manually integrated
  
```



=====
 Area Percent Report
 =====

```

Sorted By      :      Signal
Multiplier     :      1.0000
Dilution      :      1.0000
Do not use Multiplier & Dilution Factor with ISTDs
  
```

Signal 1: FID1 A, Front Signal

Peak #	RetTime [min]	Type	Width [min]	Area [pA*s]	Height [pA]	Area %
1	9.493	BB	0.0406	42.20905	16.10573	0.09379
2	9.697	BB	0.0414	34.76754	12.92428	0.07725
3	10.876	BV	0.0373	4.54914	1.94502	0.01011
4	10.967	VB	0.0420	198.03156	72.24292	0.44003
5	12.545	BV	0.0476	7.22628	2.43412	0.01606
6	12.648	VB	0.0444	21.09159	7.16316	0.04687
7	18.524	BB	0.0463	6.14693	2.09243	0.01366

Peak #	RetTime [min]	Type	Width [min]	Area [pA*s]	Height [pA]	Area %
8	18.783	BB	0.0473	12.98850	4.16956	0.02886
9	19.529	BB	0.0469	13.18235	4.40591	0.02929
10	20.273	BB	0.0434	14.08967	4.77500	0.03131
11	20.989	BB	0.0619	13.41287	3.33752	0.02980
12	21.275	BB	0.0605	39.99437	9.61821	0.08887
13	21.597	BB	0.0516	11.16047	3.45985	0.02480
14	21.913	BB	0.0454	5.89574	2.12177	0.01310
15	22.306	BV	0.0500	78.57198	24.10625	0.17459
16	22.392	VV	0.0421	18.14487	6.38635	0.04032
17	22.493	VB	0.0520	630.27814	193.56804	1.40048
18	22.708	BB	0.0645	274.41776	66.00875	0.60976
19	23.033	BV	0.0916	84.91401	13.10791	0.18868
20	23.304	VV	0.0776	1.14361e4	1943.82251	25.41106
21	23.500	VV	0.0475	2295.90161	714.11377	5.10150
22	23.704	VV	0.0598	490.98886	125.03778	1.09098
23	23.888	VV	0.0700	1.00450e4	1889.09424	22.32011
24	24.003	VV	0.0483	334.76413	101.85687	0.74385
25	24.114	VV	0.0497	907.18677	273.40714	2.01577
26	24.352	VV	0.0706	1784.24329	337.98611	3.96460
27	24.405	VV	0.0356	351.18042	148.37837	0.78032
28	24.486	VV	0.0474	1109.16760	355.18704	2.46457
29	24.560	VV	0.0471	144.76285	48.10946	0.32166
30	24.732	VV	0.0525	873.13092	239.67000	1.94010
31	24.936	VV	0.0631	108.78095	23.92013	0.24171
32	25.015	VV	0.0595	336.82959	88.25111	0.74844
33	25.073	VV	0.0367	95.05772	38.59517	0.21122
34	25.140	VV	0.0505	121.48237	35.03144	0.26993
35	25.275	VV	0.0718	838.42828	150.98053	1.86299
36	25.315	VV	0.0547	582.97791	145.75412	1.29538
37	25.516	VV	0.0515	1121.37439	340.08871	2.49170
38	25.693	VV	0.0510	40.55882	12.80033	0.09012
39	25.831	VV	0.0590	506.65347	125.72216	1.12579
40	26.001	VV	0.0516	43.29995	13.07331	0.09621
41	26.103	VV	0.0582	28.43678	7.51412	0.06319
42	26.178	VB	0.0593	19.32567	4.47893	0.04294
43	26.370	BV	0.0467	15.99618	5.53622	0.03554
44	26.502	VV	0.0538	16.29024	4.43697	0.03620
45	26.625	VV	0.0583	324.29221	83.53027	0.72058
46	26.728	VV	0.0502	230.15791	70.27538	0.51141
47	26.817	VV	0.0637	86.00786	19.04053	0.19111
48	26.987	VV	0.0527	256.54596	75.42646	0.57005
49	27.108	VV	0.0609	36.56040	8.38278	0.08124
50	27.226	VV	0.0536	273.74850	78.70444	0.60827
51	27.373	VV	0.0679	286.72543	63.18569	0.63710
52	27.566	VV	0.0653	52.34473	11.89938	0.11631
53	27.638	VV	0.0508	54.60715	16.01546	0.12134
54	27.769	VV	0.0743	178.57457	31.88148	0.39679
55	27.952	VV	0.0920	89.83237	13.09929	0.19961
56	28.090	VV	0.0635	290.14011	68.42584	0.64469
57	28.283	VV	0.0786	167.79594	28.94088	0.37284
58	28.396	VV	0.0831	208.23805	34.65161	0.46271
59	28.595	VV	0.0933	164.64244	24.84478	0.36584
60	28.722	VV	0.0609	55.23500	12.65009	0.12273
61	28.805	VV	0.0490	30.61780	9.15481	0.06803

Peak #	RetTime [min]	Type	Width [min]	Area [pA*s]	Height [pA]	Area %
62	28.938	VV	0.0646	437.38214	100.92565	0.97186
63	29.168	VV	0.0637	4090.31665	873.01459	9.08870
64	29.272	VV	0.0417	48.43738	17.29407	0.10763
65	29.349	VV	0.0818	133.13135	22.24642	0.29582
66	29.519	VV	0.0853	85.56059	13.62158	0.19012
67	29.801	VV	0.0629	147.71208	35.22932	0.32822
68	30.072	VV	0.0845	111.83638	17.99940	0.24850
69	30.165	VV	0.0521	109.51819	31.88782	0.24335
70	30.238	VV	0.0602	238.94591	56.63420	0.53094
71	30.360	VV	0.0588	213.07544	52.00362	0.47345
72	30.540	VV	0.0674	118.67767	28.05320	0.26370
73	30.683	VV	0.0596	84.70310	21.20422	0.18821
74	30.854	VV	0.0683	56.10427	11.41491	0.12466
75	31.000	VV	0.0595	13.87936	3.48072	0.03084
76	31.104	VV	0.0517	18.56065	5.31929	0.04124
77	31.245	VV	0.0820	530.42114	84.74438	1.17860
78	31.494	VV	0.0577	295.86380	80.84601	0.65741
79	31.607	VB	0.0634	25.13935	5.94145	0.05586
80	31.812	BV	0.0506	44.10905	13.33622	0.09801
81	31.993	VB	0.0696	18.99951	4.06189	0.04222
82	32.333	BV	0.0813	42.03128	7.07617	0.09339
83	32.493	VB	0.0967	23.20793	3.15850	0.05157
84	33.182	BB	0.0614	12.52460	3.29023	0.02783
85	34.325	BB	0.0512	12.53969	3.73092	0.02786
86	34.498	BB	0.0559	15.35008	4.08307	0.03411
87	34.864	BB	0.0546	16.35616	4.48014	0.03634
88	35.560	BB	0.0747	36.36993	6.77250	0.08081
89	36.497	BB	0.0525	9.02147	2.60171	0.02005
90	37.091	BB	0.0532	8.67202	2.51953	0.01927
91	37.985	BB	0.0618	17.93247	4.03606	0.03985
92	39.411	BB	0.0504	8.91594	2.77846	0.01981
93	40.305	BB	0.0583	14.76438	3.80103	0.03281
94	44.600	BB	0.0611	19.27084	4.49064	0.04282

Totals : 4.50044e4 9805.00644

=====
*** End of Report ***